

SOUTH TERRACE COVE

City of Blaine
County of Anoka
Sec. 19, T31, R23

KNOW ALL PERSONS BY THESE PRESENTS: That G.E. Knutson, Inc., a Minnesota corporation, owner and Midwest One Bank, an Iowa banking corporation, mortgagee, of the following described property:

Lot 1, Block 1, DEMATTS ADDITION, Anoka County, Minnesota.

AND

Lots 1 and 2, Block 1, DEMATTS SECOND ADDITION, Anoka County, Minnesota.

Have caused the same to be surveyed and platted as SOUTH TERRACE COVE and do hereby dedicate to the public for public use the drainage and utility easements as shown on this plat.

In witness whereof said G.E. Knutson, Inc., a Minnesota corporation, has caused these presents to be signed by its proper officer this 26 day of June, 2019

G.E. KNUTSON, INC.
Gregory E. Knutson
Gregory E. Knutson, President

STATE OF Minnesota
COUNTY OF Isanti

This instrument was acknowledged before me this 26th day of June, 2019 by Gregory E. Knutson, President of G.E. Knutson, Inc., a Minnesota corporation.

Bridget Wolfe
Bridget Wolfe (Signature)
Bridget Wolfe (Print Name)
Notary Public, Isanti County, Minnesota
My Commission Expires January 31, 2022

In witness whereof said Midwest One Bank, an Iowa banking corporation, has caused these presents to be signed by its proper officer this 27th day of June, 2019.

MIDWEST ONE BANK
Donovan McGuire
Donovan McGuire, its MARKET President

STATE OF Minnesota
COUNTY OF Anoka

This instrument was acknowledged before me this 27 day of June, 2019 by Donovan McGuire, its Market President of Midwest One Bank, an Iowa banking corporation.

Shauna K. Hilda
Shauna K. Hilda (Signature)
Shauna K. Hilda (Print Name)
Notary Public, Anoka County, Minnesota
My Commission Expires 1-31-2020

I James E. Napier do hereby certify that this plat was prepared by me or under my direct supervision; that I am a duly Licensed Land Surveyor in the State of Minnesota; that this plat is a correct representation of the boundary survey; that all mathematical data and labels are correctly designated on this plat; that all monuments depicted on this plat have been, or will be correctly set within one year; that all water boundaries and wet lands, as defined in Minnesota Statutes, Section 505.01, Subd. 3, as of the date of this certificate are shown and labeled on this plat; and all public ways are shown and labeled on this plat.

Dated this 25th day of June, 2019.

James E. Napier
James E. Napier, Licensed Land Surveyor
Minnesota License No. 25343

STATE OF MINNESOTA
COUNTY OF ANOKA

This instrument was acknowledged before me this 25th day of June, 2019 by James E. Napier.

Nicole A. Johnson
Nicole A. Johnson (Signature)
Nicole A. Johnson (Print Name)
Notary Public, Anoka County, Minnesota
My Commission Expires January 3, 2020

CITY COUNCIL, CITY OF BLAINE, MINNESOTA

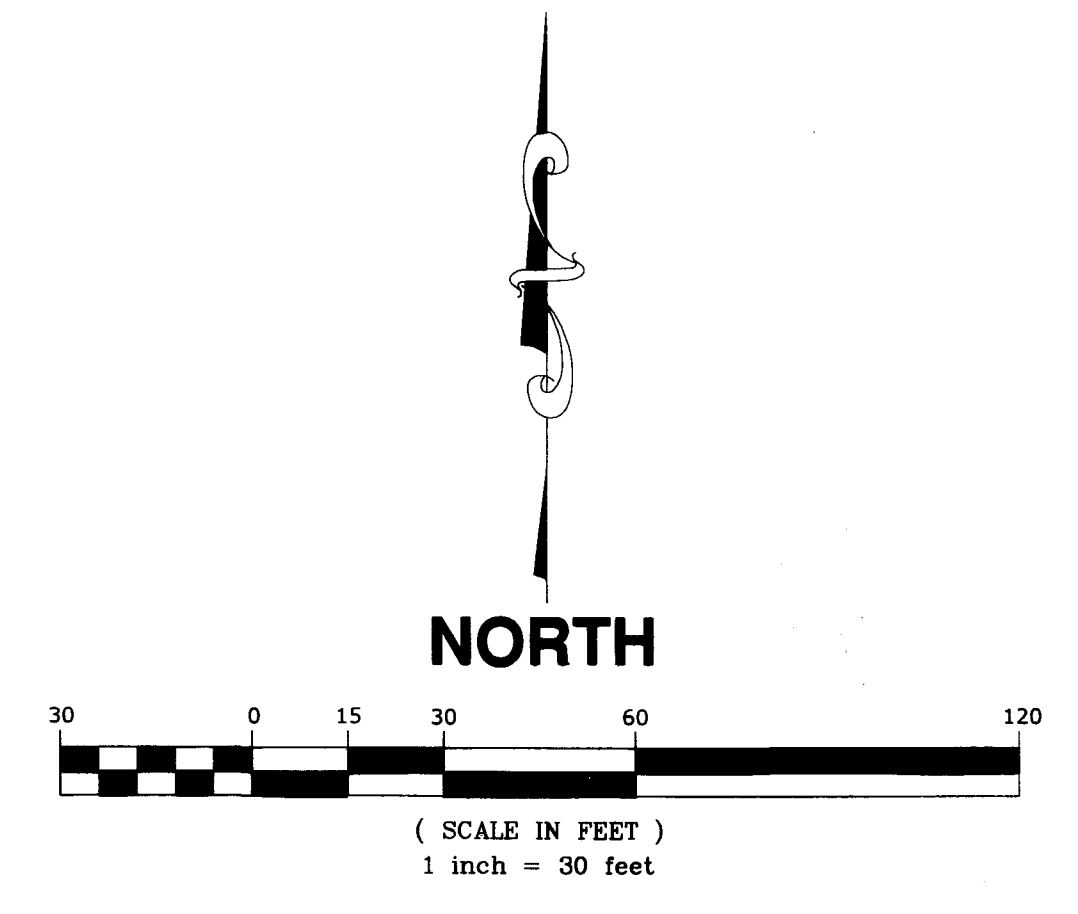
This plat of SOUTH TERRACE COVE was approved and accepted by the City Council of the City of Blaine, Minnesota at a regular meeting thereof held this 20th day of May, 2019, and said plat is in compliance with the provisions of Minnesota Statutes, Section 505.03, Subd. 2.

City Council, City of Blaine, Minnesota
By *Jan Eger* Mayor By *Colin* Clerk

COUNTY SURVEYOR

I hereby certify that in accordance with Minnesota Statutes, Section 505.021, Subd. 11, this plat has been reviewed and approved this 5th day of December, 2019.

Charles F. Gitzen
Charles F. Gitzen
Anoka County Surveyor



LEGEND

- DENOTES IRON MONUMENT FOUND AS LABELED
- DENOTES 1/2 INCH BY 14 INCH IRON PIPE SET, MARKED RLS NO. 25343

FOR THE PURPOSES OF THIS PLAT, THE SOUTH LINE OF LOT 2, BLOCK 1, DEMATTS SECOND ADDITION IS ASSUMED TO HAVE A BEARING OF SOUTH 89 DEGREES 47 MINUTES 02 SECONDS WEST.

COUNTY AUDITOR/TREASURER

Pursuant to Minnesota Statutes, Section 505.021, Subd. 9, taxes payable in the year 2019 on the land hereinbefore described have been paid. Also, pursuant to Minnesota Statutes, Section 272.12, there are no delinquent taxes and transfer entered this 11 day of December, 2019.

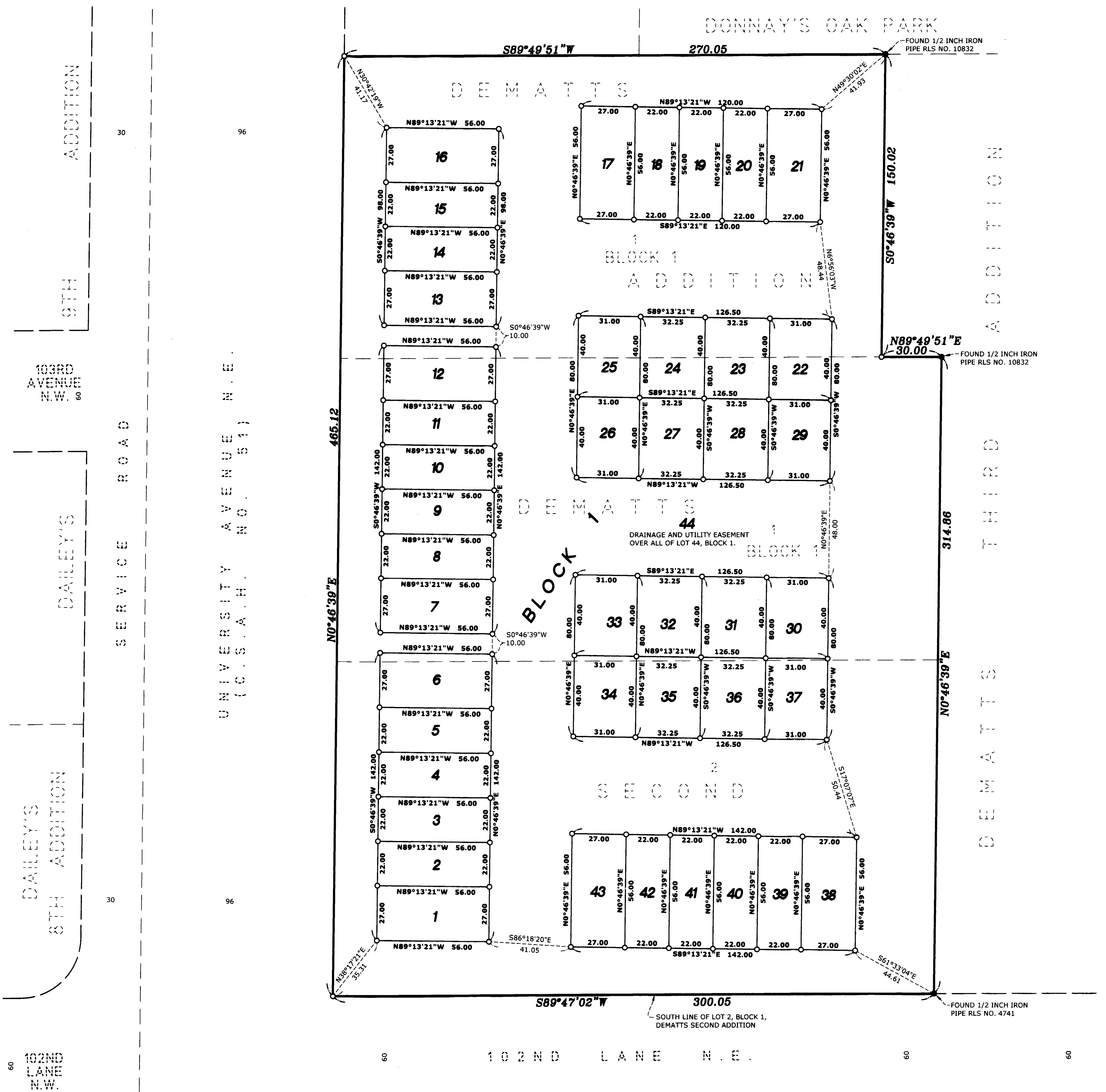
Jonell M. Sawyer
Jonell M. Sawyer
Property Tax Administrator
By *Marcia Earnest*, Deputy

COUNTY RECORDER/REGISTRAR OF TITLES
COUNTY OF ANOKA, STATE OF MINNESOTA

I hereby certify that this plat of SOUTH TERRACE COVE was filed in the office of the County Recorder/Registrar of Titles for public record on this 11 day of December, 2019, at 1:30 o'clock P.M. and was duly recorded as Document Number 2245738.002.

Jonell M. Sawyer
Jonell M. Sawyer
County Recorder/Registrar of Titles
By *Marcia Earnest*, Deputy

E.G. RUD & SONS, INC.
EST. 1877 Professional Land Surveyors



\$56-