

# SPRING CREST ESTATES

CITY OF SPRING LAKE PARK COUNTY OF ANOKA

LOT SURVEYS COMPANY, INC.  
LAND SURVEYORS

KNOW ALL MEN BY THESE PRESENTS: That H.E. Homes, a Minnesota Corporation, owner and proprietor, and Leigh Investments, Inc., a Minnesota corporation, mortgagee, and Norwest Bank Central, National Association, a United States corporation, mortgagee of the following described property situated in the County of Anoka, State of Minnesota, to-wit:

That part of Outlot One, HAN-DON FIRST ADDITION, lying North of the South 217.60 feet, as measured at right angles to the most Southerly line of said Outlot One, and lying West of the East 246.13 feet, as measured at right angles to the East line of said Outlot One.

Have caused the same to be surveyed and platted as SPRING CREST ESTATES and do hereby donate and dedicate to the public for public use forever the utility and drainage easements as shown on the plat. In witness whereof H.E. Homes, a Minnesota corporation, has caused these presents to be signed by its proper officer this 26 day of March 1984. In witness whereof said Leigh Investments, Inc., a Minnesota corporation, has caused these presents to be signed by its proper officer this 27 day of March 1984. In witness whereof Norwest Bank Central, National Association, a United States corporation, has caused these presents to be signed by its proper officers and its corporate seal to be hereunto affixed this 26<sup>th</sup> day of March 1984.

Signed: NORWEST BANK CENTRAL, NATIONAL ASSOCIATION

H.E. HOMES

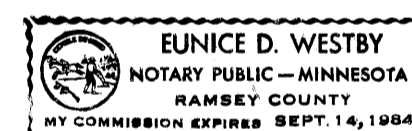
[Signature] its VP.

Rickey L. Hartmann  
Rickey L. Hartmann, president  
LEIGH INVESTMENTS, INC.

[Signature] its AVP

John R. Doyle  
John R. Doyle, president

State of Minnesota  
County of Hennepin The foregoing instrument was acknowledged before me this 26<sup>th</sup> day of MARCH 1984, by JERRY A. ROENICK its VICE PRESIDENT and [Signature] its AVP of Norwest Bank Central, National Association, a United States corporation, on behalf of said corporation.

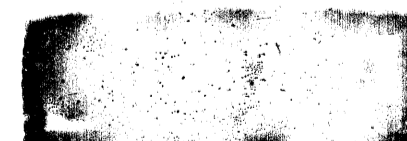
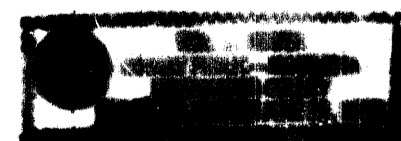


Eunice D. Westby  
Notary Public, Hennepin County, Minnesota  
My Commission Expires SEPT. 14, 1984

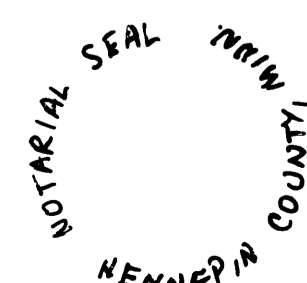
State of Minnesota  
County of Hennepin The foregoing instrument was acknowledged before me this 26<sup>th</sup> day of March 1984, by Rickey L. Hartmann, president of H.E. Homes, a Minnesota corporation, on behalf of said corporation.

[Signature]  
Notary Public, Hennepin County, Minnesota  
My Commission Expires May 27, 1985

State of Minnesota  
County of Hennepin The foregoing instrument was acknowledged before me this 27<sup>th</sup> day of March 1984, by John R. Doyle, president, of Leigh Investments, Inc., a Minnesota corporation, on behalf of said corporation.



William J. Keefer  
Notary Public, Hennepin County, Minnesota  
My Commission Expires June 20, 1985  
William J. Keefer



I HEREBY CERTIFY THAT THE TAXES PAYABLE IN THE YEAR 1984 ON THE LANDS DESCRIBED WITHIN ARE PAID  
Omada Bailey Williams  
Anoka County Treasurer

TWO DELINQUENT TAXES AND TRANSFER ENTERED

April 9<sup>th</sup> 1984  
[Signature]  
Auditor, Anoka County  
BY [Signature]  
Deputy

OFFICE OF COUNTY RECORDER  
STATE OF MINNESOTA, COUNTY OF ANOKA  
I hereby certify that the within instrument was filed in this office for record on the SEP 21 1984 A.D., 1984 at 10:50 o'clock A.M., and was duly recorded in book 340 of Plats page 19

[Signature]  
County Recorder  
By [Signature]  
Deputy

I hereby certify that I have surveyed and platted the property described on this plat as SPRING CREST ESTATES; that this plat is a correct representation of said survey; that the distances are correctly shown on said plat in feet and hundredths of a foot; that all monuments have been correctly placed in the ground as shown on said plat; that the outside boundary lines are correctly designated on said plat; and that there are no wetlands or public highways to be designated other than as shown thereon.

Raymond A. Prusch  
Raymond A. Prusch, Registered Land Surveyor  
Minnesota Registration No. 6743

State of Minnesota  
County of Hennepin The foregoing instrument was acknowledged before me this 26<sup>th</sup> day of MARCH 1984, by Raymond A. Prusch, Registered Land Surveyor.

Milton E. Hyland  
Milton E. Hyland - Notary Public, Henn. Co., Minn.  
My Commission Expires November 19, 1987

SPRING LAKE PARK, MINNESOTA  
We hereby certify that the City Council of the City of Spring Lake Park, Anoka County, Minnesota duly accepted and approved the plat of SPRING CREST ESTATES, at a regular meeting thereof held this 3<sup>rd</sup> day of APRIL 1984.

By Don Matheson Mayor  
By Donald B. Prusch Clerk

Checked and approved this 9<sup>th</sup> day of April 1984.

Roland W. Anderson  
Anoka County Surveyor

# SPRING CREST ESTATES

CITY OF SPRING LAKE PARK

COUNTY OF ANOKA

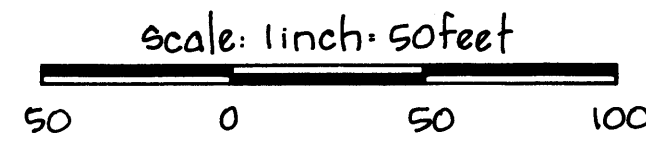
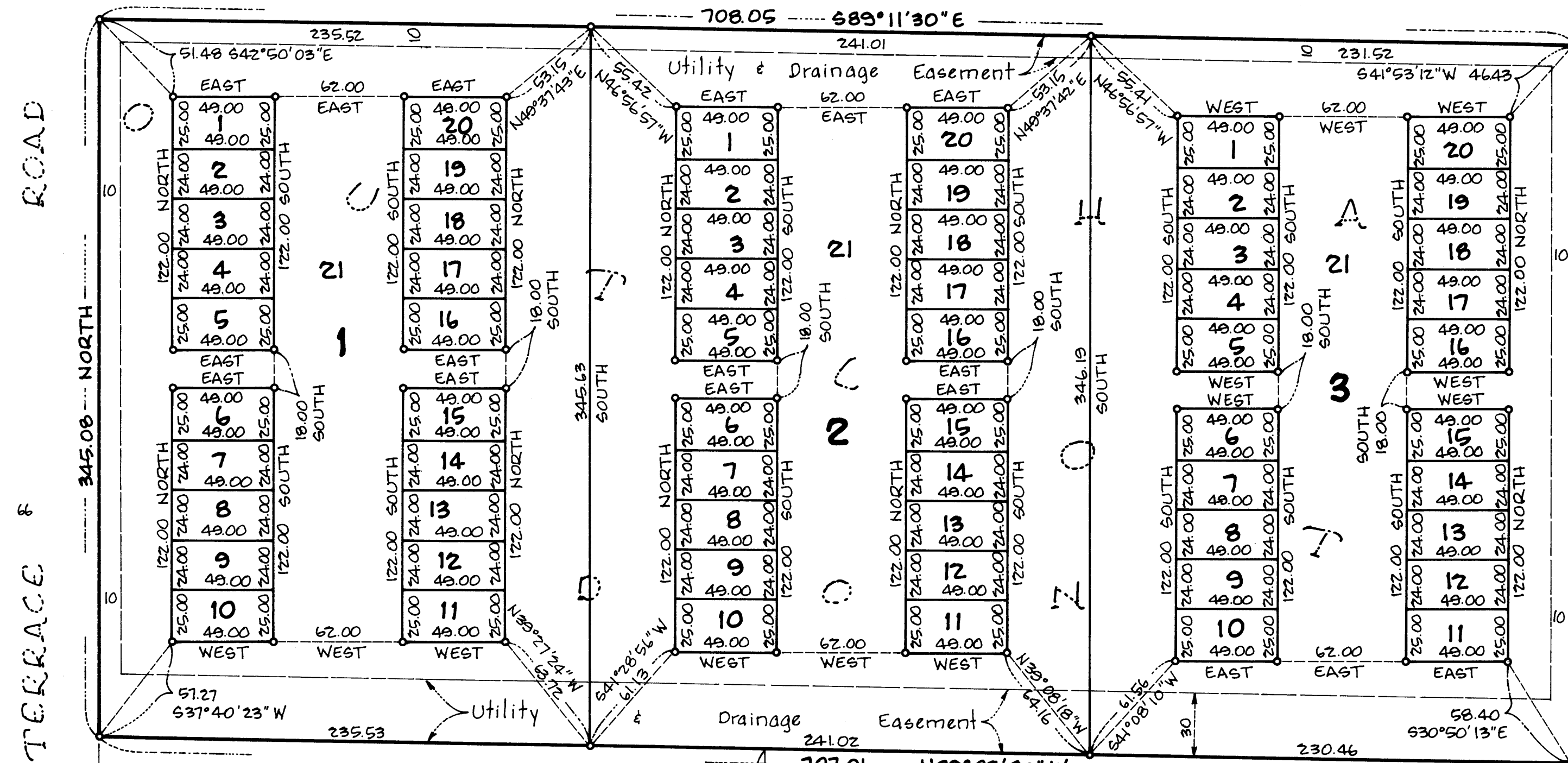
LOT SURVEYS COMPANY, INC.  
LAND SURVEYORS

HAN - DON FIRST ADDITION

MADISON STREET N.E.

HAN - DON FIRST ADDITION

78TH AVENUE N.E.



FIRST

ADDITION

o Denotes Iron Monument

FOR THE PURPOSES OF THIS PLAT THE WEST LINE OF OUTLOT A, HAN - DON FIRST ADDITION IS ASSUMED TO BEAR NORTH.

South line of Sec. 2, T30, R24  
77TH AVENUE N.E.