

SPRING LAKE PARK HY VEE

KNOW ALL PERSONS BY THESE PRESENTS: That Hy-Vee Inc., an Iowa corporation, owner of the following described property:

That part of Lot 7, Auditor's Subdivision No. 152, Anoka County, Minnesota, lying Easterly of State Trunk Highway No. 65.

AND

That part of vacated County State Aid Highway Number 35, also known as Central Avenue, lying in the Southeast Quarter of the Northwest Quarter of Section 1, Township 30, Range 24, Anoka County, Minnesota, described as follows:

Commencing at the southeast corner of Lot 7, AUDITOR'S SUBDIVISION NO. 152, Anoka County, Minnesota; thence North 00 degrees 20 minutes 26 seconds East, bearing assumed, along the east line of said Lot 7, a distance of 37.00 feet to the point of beginning of the parcel to be described; thence South 89 degrees 33 minutes 30 seconds East, parallel with the easterly extension of the south line of said Lot 7, a distance of 15.00 feet; thence North 00 degrees 20 minutes 26 seconds East, parallel with said east line of Lot 7, a distance of 1127.86 feet to its intersection with a line on MINNESOTA DEPARTMENT OF TRANSPORTATION MONUMENTATION PLAT 02 - M12, as designated by points M13 and M14; thence North 83 degrees 51 minutes 51 seconds West, along said line, 82.63 feet to said east line of Lot 7, also being said point M14; thence South 15 degrees 18 minutes 04 seconds East, along said east line of Lot 7, a distance of 249.25 feet to an angle point on said east line; thence South 00 degrees 20 minutes 26 seconds West, along said east line, 896.15 feet to the point of beginning, vacated per Doc. No. 2198973.001.

Has caused the same to be surveyed and platted as SPRING LAKE PARK HY VEE and does hereby dedicate to the public for public use the public way and the drainage and utility easements as shown on this plat.

In witness whereof said Hy-Vee Inc., an Iowa corporation, has caused these presents to be signed by its proper officers this ____ day of _____, 2018.

Signed: Hy-Vee Inc.

By: *Jeffrey Markey, Sr.*
Jeffrey Markey, Sr., Vice President

By: *Nathan Allen*
Nathan Allen, Assistant Secretary

STATE OF IOWA
COUNTY OF POLK

This instrument was acknowledged before me on 28th day of August, 2018 by Jeffrey Markey, Sr., Vice President of Hy-Vee Inc., an Iowa corporation, on behalf of the corporation.

Martina D. Massman
Martina D. Massman
Printed Name Commission No. 154992

Notary Public, POLK County, IOWA
My Commission Expires 2-15-20

STATE OF IOWA
COUNTY OF POLK

This instrument was acknowledged before me on 28th day of August, 2018 by Nathan Allen, Assistant Secretary of Hy-Vee Inc., an Iowa corporation, on behalf of the corporation.

Martina D. Massman
Martina D. Massman
Printed Name Commission No. 154992

Notary Public, POLK County, IOWA
My Commission Expires 2-15-20

I Dennis B. Olmstead do hereby certify that this plat was prepared by me or under my direct supervision; that I am a duly Licensed Land Surveyor in the State of Minnesota; that this plat is a correct representation of the boundary survey; that all mathematical data and labels are correctly designated on this plat; that all monuments depicted on this plat have been, or will be correctly set within one year; that all water boundaries and wet lands, as defined in Minnesota Statutes, Section 505.01, Subd. 3, as of the date of this certificate are shown and labeled on this plat; and all public ways are shown and labeled on this plat.

Dated this 27th day of August, 2018.

Dennis B. Olmstead
Dennis B. Olmstead, Licensed Land Surveyor
Minnesota License No. 18425

STATE OF MINNESOTA
COUNTY OF HENNEPIN

This instrument was acknowledged before me this 27th day of August, 2018 by Dennis B. Olmstead.

Daniel P. Ekrem
Daniel P. Ekrem
Printed Name
Notary Public, Dakota County, Minnesota
My Commission Expires 1-31-19

City Council, City of Spring Lake Park, Minnesota

This plat of SPRING LAKE PARK HY VEE was approved and accepted by the City Council of the City of Spring Lake Park, Minnesota at a regular meeting thereof held this 16th day of January, 2018, and said plat is in compliance with the provisions of Minnesota Statutes, Section 505.03, Subd. 2.

City Council, City of Spring Lake Park, Minnesota
By: *Cindy Hansen* Cindy Hansen, Mayor
By: *Daniel R. Buchholtz* Daniel R. Buchholtz, City Clerk
Printed Name

County Surveyor

I hereby certify that in accordance with Minnesota Statutes, Section 505.021, Subd. 11, this plat has been reviewed and approved this 18th day of September, 2018.

By: *Charles F. Gitzen*
Charles F. Gitzen
Anoka County Surveyor

County Auditor/Treasurer

Pursuant to Minnesota Statutes, Section 505.021, Subd. 9, taxes payable in the year 2018 on the land hereinbefore described have been paid. Also, pursuant to Minnesota Statutes, Section 272.12, there are no delinquent taxes and transfer entered this 18 day of September, 2018.

Jonell M Sawyer
Jonell M Sawyer
Property Tax Administrator
By: *Christy Johnson*, Deputy

County Recorder/Registrar of Titles
County of Anoka, State of Minnesota

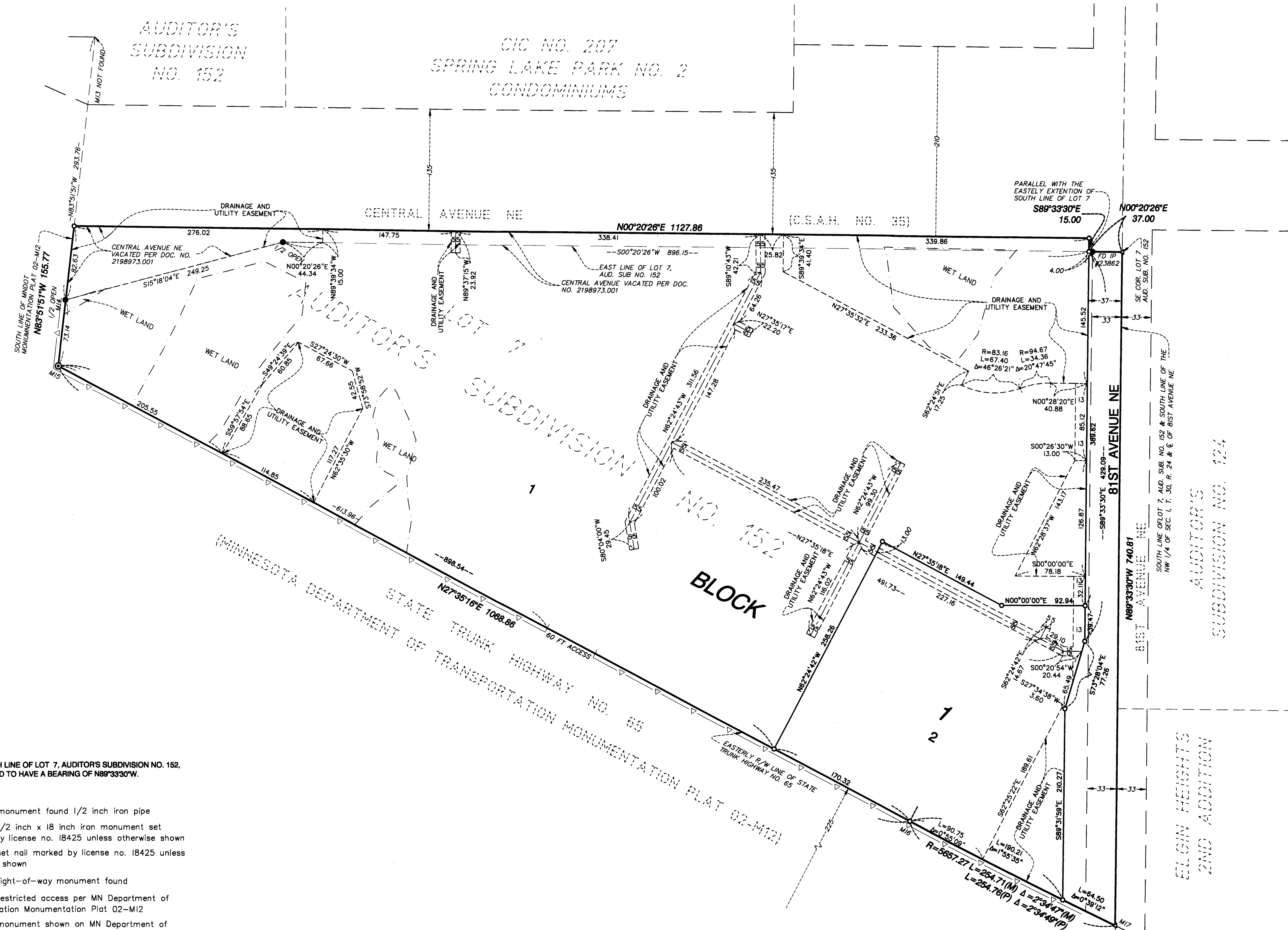
I hereby certify that this plat of SPRING LAKE PARK HY VEE was filed in the office of the County Recorder/Registrar of Titles for public record on this 18 day of September, 2018, at 12:01 o'clock P.M. and was duly recorded as Document Number 2209220.001.

Jonell M Sawyer
Jonell M Sawyer
County Recorder/Registrar of Titles
By: *Christy Johnson*, Deputy

\$ 56.⁰⁰



SPRING LAKE PARK HY VEE



THE SOUTH LINE OF LOT 7, AUDITOR'S SUBDIVISION NO. 152, IS ASSUMED TO HAVE A BEARING OF N89°33'30"W.

- Denotes monument found 1/2 inch iron pipe
- Denotes 1/2 inch x 18 inch iron monument set marked by license no. 18425 unless otherwise shown
- ▲ Denotes set nail marked by license no. 18425 unless otherwise shown
- ⊙ Denotes right-of-way monument found
- △ Denotes restricted access per MN Department of Transportation Monumentation Plat 02-M12
- MI4 Denotes monument shown on MN Department of Transportation Monumentation Plat 02-M12
- (M) Measured dimensions
- (P) Plat dimensions per Mn. Department of Transportation Monumentation Plat 02-M12

