

102606

SPRING VALLEY

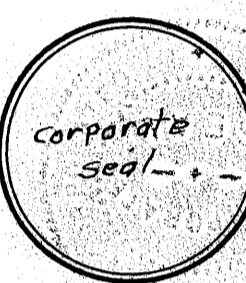
SEC. 13 TWP. 30 N. R. 24 W. 4th P. M.
ANOKA COUNTY MINNESOTA

OFFICE OF REGISTER OF DEEDS
STATE OF MINNESOTA
I hereby certify that the within instrument was filed in my office for record on the 14th day of Sept. 1941 at 4:20 P.M. and is a correct copy as recorded in book 21 of plate 5
Cora Brandeell
Register of Deeds

KNOW ALL MEN BY THESE PRESENTS: That Bronson-Erickson Incorporated, a Corporation existing under the laws of the State of Minnesota, owner and proprietor of the north west quarter (NW 1/4) of the Southeast (SE 1/4) of Section thirteen (13) Township Thirty (30) North of Range Twentyfour (24) West of the Fourth Principal Meridian, Anoka County, Minnesota, have caused the same to be surveyed and platted as, **SPRING VALLEY** and do here by donate and dedicate to the public use forever, the streets and roads and alleys as shown on the annexed plat.

In WITNESS WHEREOF, The said Corporation has caused these presents to be executed in its corporate name by its President and its Secretary and its corporate seal to be hereunto affixed this 11th day of July A.D. 1941

In Presence of **BRONSON-ERICKSON INCORPORATED.**
Vicki J. Olson } BY [Signature] PRESIDENT
Robert Erickson } BY [Signature] SECRETARY



STATE OF MINNESOTA } ss.
County of Hennepin }
On this 11 day of July A.D. 1941 before me, a Notary Public within and for said County, personally appeared Oscar Bronson and John G. Erickson to me personally known, who, being each duly sworn they did say that they are respectively the President and the Secretary of the Corporation named in the foregoing instrument; and that the seal affixed to said instrument is the Corporate seal of said Corporation, and that said instrument was signed and sealed in behalf of said Corporation by authority of its Board of Directors, and said Oscar Bronson and John G. Erickson acknowledged said instrument to be the free act and deed of said Corporation.

[Signature]
Notary Public Hennepin County, Minnesota.
My Commission expires May 5, 1947



STATE OF MINNESOTA } ss.
County of Hennepin }
I hereby certify that I have surveyed and platted the above described property as **SPRING VALLEY** in Anoka County, Minnesota, that the annexed plat is a correct representation of said survey; that all distances are correctly shown on the plat in feet and decimals of a foot; that the monuments for the guidance of future surveys have been correctly placed in the ground as shown on the plat; that the outside boundary lines are correctly designated on the plat; that the topography of the land is correctly shown on the plat; and that there are no wet lands or public highways to be designated on the plat other than is shown thereon.

[Signature]
JAMES CORR
Registered Surveyor

Above certificate subscribed and sworn to before me this 7 day of July A.D. 1941.

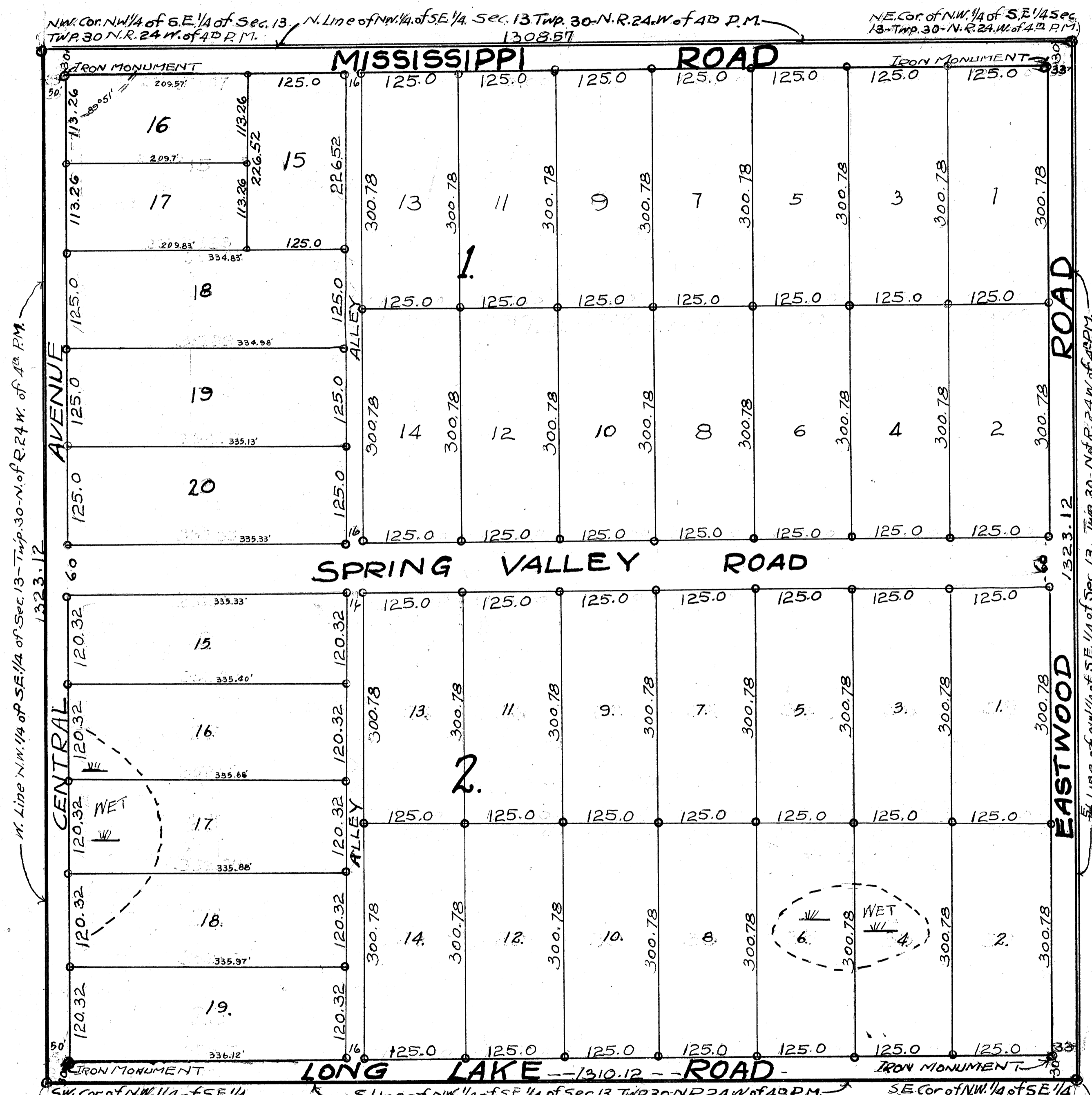
[Signature]
PAUL A. VANSTROM
Notary Public Hennepin County, Minnesota.

My Commission expires SEPT. 20, 1947



TAXES PAID
This 8th day of Sept. 1941
By [Signature] Deputy
Walter J. Bovee
By [Signature] Deputy

Chas. J. Chambers
City Attorney



N. Line NW 1/4 of SE 1/4 of Sec. 13 - Twp. 30 - N. of R. 24 W. of 4th P. M. 1323.12

E. Line of NW 1/4 of SE 1/4 of Sec. 13 - Twp. 30 - N. of R. 24 W. of 4th P. M. 1323.12

NW Cor. NW 1/4 of SE 1/4 of Sec. 13 Twp. 30 N. R. 24 W. of 4th P. M. 1308.87
N. Line of NW 1/4 of SE 1/4 Sec. 13 Twp. 30 - N. R. 24 W. of 4th P. M.
NE Cor. of NW 1/4 of SE 1/4 Sec. 13 - Twp. 30 - N. R. 24 W. of 4th P. M.

SW Cor. of NW 1/4 of SE 1/4 Sec. 13 - Twp. 30 - N. R. 24 W. of 4th P. M.
S. Line of NW 1/4 of SE 1/4 of Sec. 13 Twp. 30 - N. R. 24 W. of 4th P. M. 1310.12
SE Cor. of NW 1/4 of SE 1/4 Sec. 13 Twp. 30 - N. R. 24 W. of 4th P. M.

At a regular annual meeting of the Board of County Commissioners of Anoka County, Minnesota, on 14th day of the month of July A.D. 1941, the annexed plat was approved for Filing and Record.
ATTEST
[Signature] Deputy County Auditor
[Signature] Chairman Board of County Commissioners

