

SPRINGBROOK 4TH ADDITION

City Of Blaine
County Of Anoka
Sec 3, Twp 31, Rng 23

KNOW ALL PERSONS BY THESE PRESENTS: That Springbrook Land, LLC, a Minnesota limited liability company, owner of the following described property:

OUTLOTS A, B, C and D, SPRINGBROOK 2ND ADDITION, Anoka County, Minnesota
And
OUTLOT C, SPRINGBROOK 3RD ADDITION, Anoka County, Minnesota

Has caused the same to be surveyed and platted as SPRINGBROOK 4TH ADDITION and does hereby dedicate to the public for public use the public way and the drainage and utility easements as shown on this plat.

In witness whereof said Springbrook Land, LLC, a Minnesota limited liability company, has caused these presents to be signed by its proper officer this 18th day of June, 2019.

SPRINGBROOK LAND, LLC

By Stephen A. Bona
Stephen A. Bona, Vice President of Land

STATE OF Minnesota
COUNTY OF Anoka

This instrument was acknowledged before me this 18th day of June, 2019 by Stephen A. Bona, Vice President of Land of Springbrook Land, LLC, a Minnesota limited liability company, on behalf of the company.

Heather Lorch Signature
Notary Public, Anoka County, Minnesota
My Commission Expires 11/31/2023
Heather Lorch Printed Name, Notary

SURVEYOR CERTIFICATE

I Max L. Stanislawski do hereby certify that this plat was prepared by me or under my direct supervision; that I am a duly Licensed Land Surveyor in the State of Minnesota; that this plat is a correct representation of the boundary survey; that all mathematical data and labels are correctly designated on this plat; that all monuments depicted on this plat have been, or will be correctly set within one year; that all water boundaries and wet lands, as defined in Minnesota Statutes, Section 505.01, Subd. 3, as of the date of this certificate are shown and labeled on this plat; and all public ways are shown and labeled on this plat.

Dated this 5th day of JUNE, 2019.

Max L. Stanislawski
Max L. Stanislawski, Licensed Land Surveyor
Minnesota License No. 48988

STATE OF MINNESOTA
COUNTY OF HENNEPIN

This instrument was acknowledged before me this 5th day of JUNE, 2019 by Max L. Stanislawski.

Sharon F. Morin Signature
Notary Public, Hennepin County, Minnesota
My Commission Expires January 20, 2020
SHARON F. MORIN Printed Name, Notary

CITY COUNCIL, CITY OF BLAINE, MINNESOTA

This plat of SPRINGBROOK 4TH ADDITION was approved and accepted by the City Council of the City of Blaine, Minnesota at a regular meeting thereof held this 20th day of December, 2018, and said plat is in compliance with the provisions of Minnesota Statutes, Section 505.03, Subd. 2.

City Council, City of Blaine, Minnesota
By Frank, Mayor By Adam, Clerk

COUNTY SURVEYOR

I hereby certify that in accordance with Minnesota Statutes, Section 505.021, Subd. 11, this plat has been reviewed and approved this 1st day of July, 2019.

Charles F. Gitzen
Charles F. Gitzen, Anoka County Surveyor

COUNTY AUDITOR/TREASURER

Pursuant to Minnesota Statutes, Section 505.021, Subd. 9, taxes payable in the year 2019 on the land hereinbefore described have been paid. Also, pursuant to Minnesota Statutes, Section 272.12, there are no delinquent taxes and transfer entered this 1st day of July, 2019.

By Sonell M. Sawyer Property Tax Administrator By Megan B. Weidner, Deputy

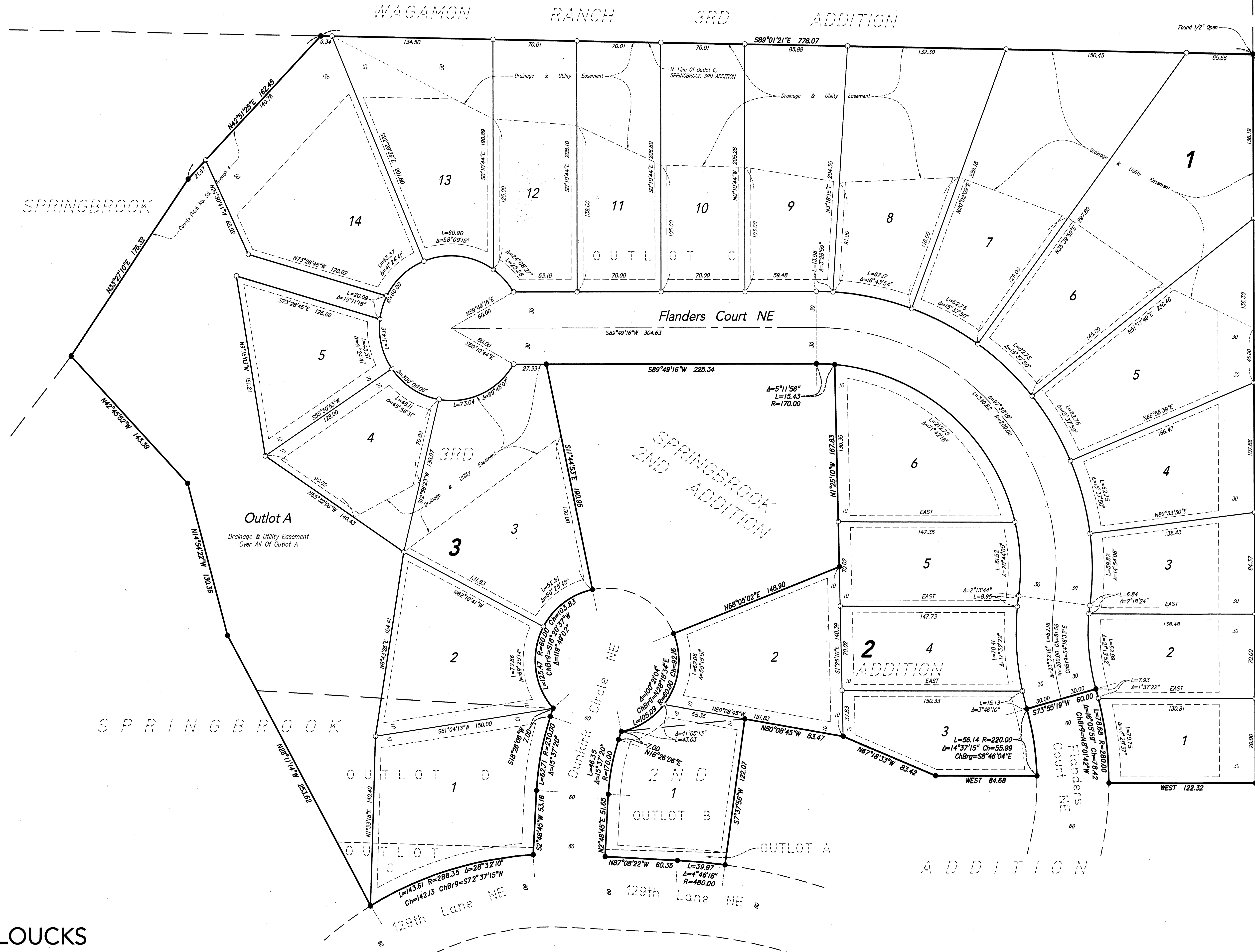
**COUNTY RECORDER/REGISTRAR OF TITLES
COUNTY OF ANOKA, STATE OF MINNESOTA**

I hereby certify that this plat of SPRINGBROOK 4TH ADDITION was filed in the office of the County Recorder/Registrar of Titles for public record on this 1st day of July, 2019, at 9:17 o'clock A.M. and was duly recorded as Document Number 565928.007.

By Sonell M. Sawyer County Recorder/Registrar of Titles By Megan B. Weidner, Deputy

SPRINGBROOK 4TH ADDITION

City Of Blaine
County Of Anoka
Sec 3, Twp 31, Rng 23



WAGAMON RANCH 2ND ADDITION

SPRINGBROOK

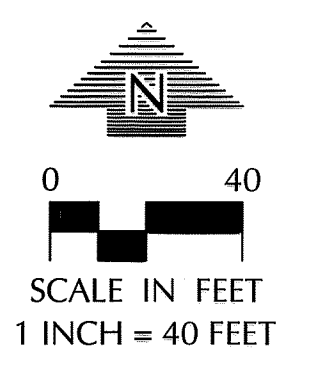
HARPERS STREET WOODS 5TH ADDITION

HARPERS STREET WOODS 2ND ADDITION

SPRINGBROOK

ADDITION

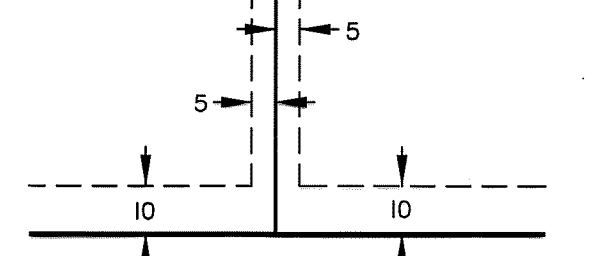
Found 1/2" Open



FOR THE PURPOSES OF THIS PLAT THE NORTH LINE OF OUTLOT C, SPRINGBROOK 3RD ADDITION IS ASSUMED TO HAVE A BEARING OF SOUTH 89°01'21" EAST

- DENOTES 1/2 INCH X 14 INCH IRON MONUMENT SET, MARKED "LS 48988"
- DENOTES 1/2 INCH IRON MONUMENT FOUND WITH CAP "LS 48988", UNLESS OTHERWISE INDICATED

DRAINAGE AND UTILITY EASEMENTS ARE SHOWN THUS:



BEING 5 FEET IN WIDTH, UNLESS OTHERWISE INDICATED AND ADJOINING SIDE AND REAR LOT LINES, AND BEING 10 FEET IN WIDTH, UNLESS OTHERWISE INDICATED, AND ADJOINING RIGHT-OF-WAY LINES, AS SHOWN ON THE PLAT.

Outlot A
Drainage & Utility Easement
Over All Of Outlot A