

SPRINGBROOK COMMERCIAL ADDITION

KNOW ALL PERSONS BY THESE PRESENTS: That Shamrock Development, Inc., a Minnesota corporation, fee owner of the following described property situated in the State of Minnesota, County of Anoka, to wit:

Lot 1, Block 1, EVERGREEN BUSINESS PARK EAST

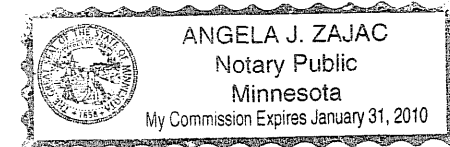
Has caused the same to be surveyed and platted as SPRINGBROOK COMMERCIAL ADDITION and does hereby donate and dedicate to the public for the public use forever the public way and also dedicating the easements for drainage and utility purposes only, as shown on this plat. Also dedicating to the County of Anoka the right to restrict access to Coon Rapids Boulevard (County State Aid Highway Number 3), as shown on this plat.

In witness whereof said Shamrock Development, Inc., a Minnesota corporation, has caused these presents to be signed by its proper officer this 9th day of October, 2009.

SHAMROCK DEVELOPMENT, INC.
By: James M. Stanton
James M. Stanton, President

State of Minnesota, County of Anoka

The foregoing instrument was acknowledged before me this 9th day of December, 2009 by James M. Stanton, as President of Shamrock Development, Inc., a Minnesota corporation, on behalf of the corporation.



Angela J. Zajac
Angela Zajac Notary Public
Anoka County, Minnesota
My Commission expires: January 31, 2010

I, Rick M. Blom, a duly Licensed Land Surveyor under the laws of the State of Minnesota, do hereby certify that I have surveyed or directly supervised the survey of the property described on this plat; prepared this plat or directly supervised the preparation of this plat of SPRINGBROOK COMMERCIAL ADDITION; that this plat is a correct representation of the boundary survey; that all mathematical data and labels are correctly designated on this plat; that all monuments depicted on this plat have been, or will be correctly set within one year as indicated on this plat; that all water boundaries and wet lands, as defined in Minnesota Statutes, Section 505.01, Subd.3, as of the date of this certificate are shown and labeled on this plat; and all public ways are shown and labeled on this plat.

Dated this 23rd day of NOVEMBER, 2009.

Rick M. Blom
Rick M. Blom, Professional Land Surveyor
Minnesota License No. 21729

State of Minnesota, County of Sherburne

The foregoing Surveyor's certificate was acknowledged before me this 23rd day of November, 2009 by Rick M. Blom, Land Surveyor, Minnesota License No. 21729.

Elizabeth J. Haglund
Elizabeth J. Haglund Notary Public
Sherburne County, Minnesota
My Commission expires: January 31, 2010

City of Coon Rapids Planning Commission

Be it known that on this 15TH day of October, 2009 the Planning Commission of the City of Coon Rapids, Minnesota, did hereby review and approve this plat of SPRINGBROOK COMMERCIAL ADDITION.

Planning Commission, City of Coon Rapids, Minnesota

By: Donna M. Naev Chairman By: _____ Secretary

City Council, City of Coon Rapids, Minnesota

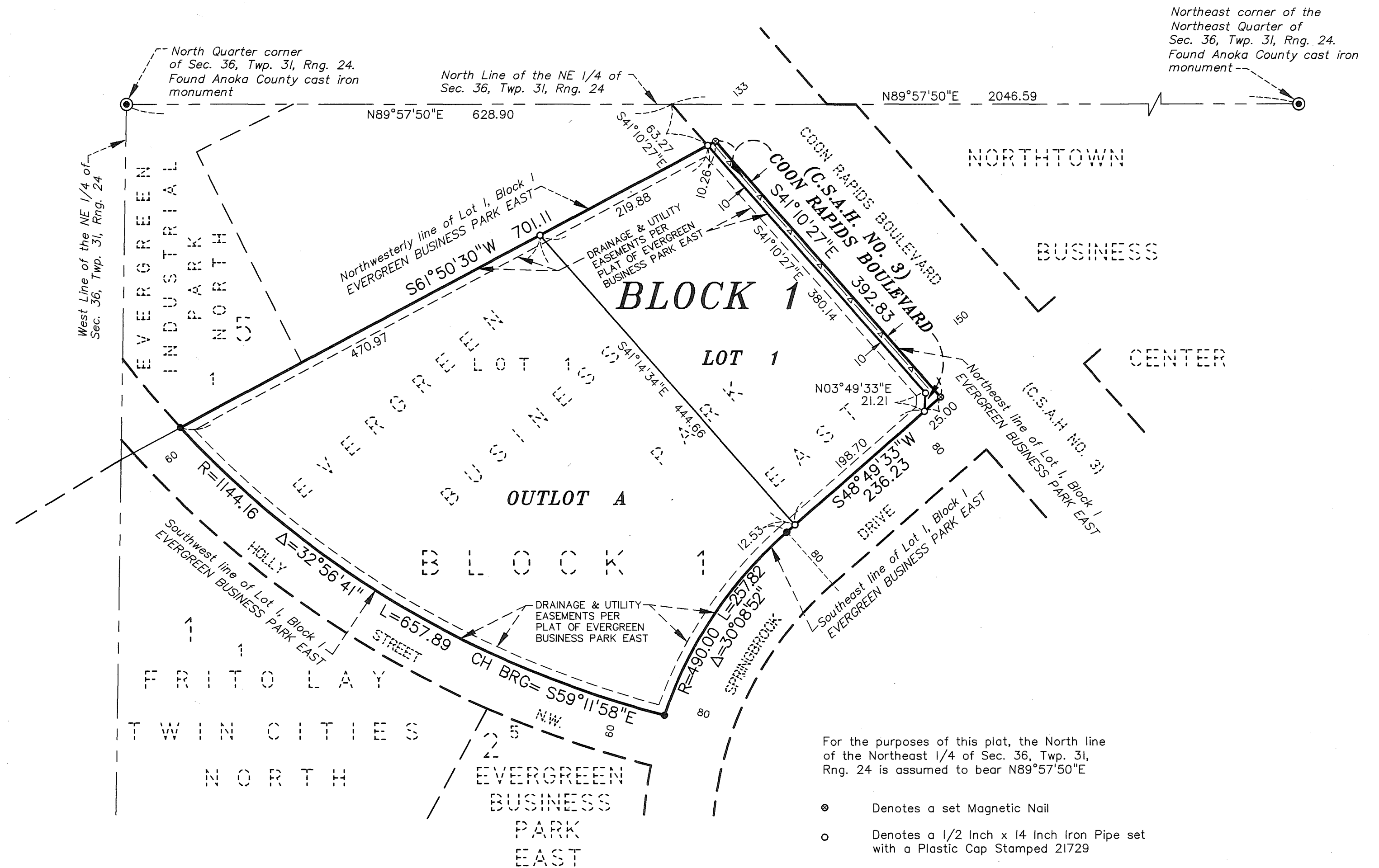
This plat of SPRINGBROOK COMMERCIAL ADDITION was approved and accepted by the City Council of the City of Coon Rapids, Minnesota, at a regular meeting thereof held this 4TH day of November, 2009, and said plat is in compliance with the provisions of Minnesota Statutes, Section 505.03, Subd. 2.

City Council, City of Coon Rapids, Minnesota

By: [Signature] Mayor By: [Signature] Clerk

This plat has been checked and approved this 14TH day of December, 2009.

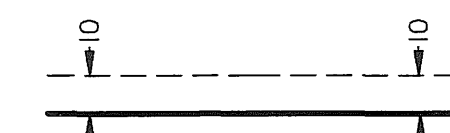
Larry D. Hoium Larry D. Hoium, Anoka County Surveyor
by Charles F. Kitzner, Deputy



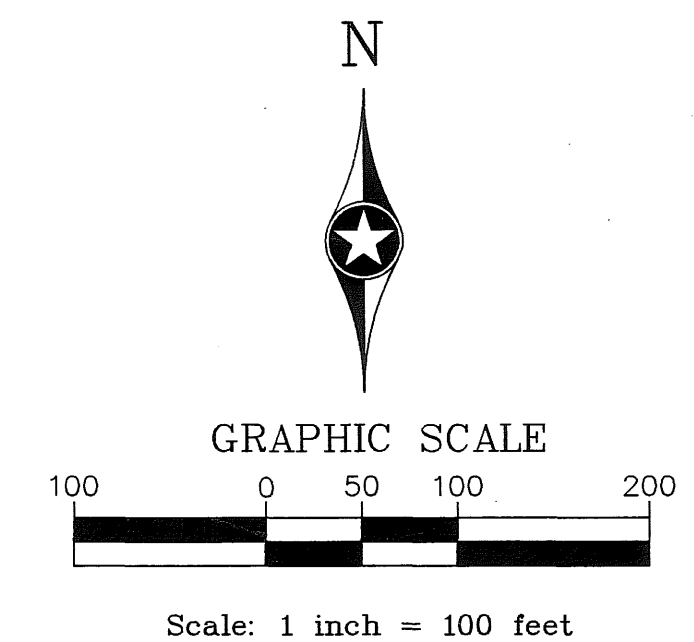
For the purposes of this plat, the North line of the Northeast 1/4 of Sec. 36, Twp. 31, Rng. 24 is assumed to bear N89°57'50"E

- Denotes a set Magnetic Nail
- Denotes a 1/2 inch x 14 inch Iron Pipe set with a Plastic Cap Stamped 21729
- Denotes iron monument found.
- ⊙ Denotes a found Section Corner An Anoka County cast iron monument
- ▲—▲— Denotes Restricted Access Dedicated to the County of Anoka onto Coon Rapids Boulevard (C.S.A.H. No. 3)

Drainage and Utility Easements are shown thus:



Being 10 feet in width and adjoining right-of-way lines, unless otherwise shown on the plat.



2012015.001
OFFICE OF COUNTY RECORDER
STATE OF MINNESOTA, COUNTY OF ANOKA
I hereby certify that the within instrument was filed in this office for record on the 14th day of December, 2009 at 2:59 o'clock P.M., and was duly recorded in book 76 page 18
Maureen Devine / new
County Recorder
Bobbie Lee

I HEREBY CERTIFY THAT THE CURRENT AND DELINQUENT TAXES ON THE LANDS DESCRIBED WITHIN ARE PAID AND THE TRANSFER IS ENTITLED
Dec. 14, 2009
MAUREEN J. DEVINE
PROPERTY TAX ADMINISTRATOR
By: [Signature]
DEPUTY PROPERTY TAX ADMINISTRATOR

\$56.00