

ST CLAIR ESTATES

City of Lino Lakes
County of Anoka
Sec. 29, T31, R22

KNOW ALL PERSONS BY THESE PRESENTS: That James H. Speiser, a single person, fee owner, and St. Clair Land Company, a Minnesota corporation, contract purchaser, of the following described property:

Lot 1, Block 1, SPEISER ACRES, Anoka County, Minnesota.

Have caused the same to be surveyed and platted as ST CLAIR ESTATES and do hereby dedicate to the public for public use the public ways and the drainage and utility easements as shown by this plat.

In witness whereof said James H. Speiser, a single person, has hereunto set his hand this 31st day of July, 2017.

James H. Speiser
James H. Speiser

STATE OF MINNESOTA
COUNTY OF Anoka

This instrument was acknowledged before me this 31st day of July, 2017, by James H. Speiser, a single person.

Julianne Bartell
Notary Public, Anoka County, Minnesota
My Commission Expires Jan. 31, 2021

In witness whereof said St. Clair Land Company, a Minnesota corporation, has caused these presents to be signed by its proper officer this 10th day of March, 2017.

Signed: St. Clair Land Company
James Jensen
James Jensen, President

STATE OF MINNESOTA
COUNTY OF Anoka

This instrument was acknowledged before me this 10th day of March, 2017, by Jamie Jensen, President of St. Clair Land Company, a Minnesota corporation, on behalf of the corporation.

Georgia A. Woltjer
Notary Public, Anoka County, Minnesota
My Commission Expires 1-31-19

I, Daniel W. Obermiller do hereby certify that this plat was prepared by me or under my direct supervision; that I am a duly Licensed Land Surveyor in the State of Minnesota; that this plat is a correct representation of the boundary survey; that all mathematical data and labels are correctly designated on this plat; that all monuments depicted on this plat have been, or will be correctly set within one year; that all water boundaries and wet lands, as defined in Minnesota Statutes, Section 505.01, Subd. 3, as of the date of this certificate are shown and labeled on this plat; and all public ways are shown and labeled on this plat.

Dated this 10th day of March, 2017.

Daniel W. Obermiller
Daniel W. Obermiller, Licensed Land Surveyor
Minnesota License No. 25341

STATE OF MINNESOTA
COUNTY OF Anoka

This instrument was acknowledged before me this 10th day of March, 2017, by Daniel W. Obermiller.

Georgia A. Woltjer
Notary Public, Anoka County, Minnesota
My Commission Expires 1-31-19

City Council, City of Lino Lakes, Minnesota

This plat of ST CLAIR ESTATES was approved and accepted by the City Council of the City of Lino Lakes, Minnesota at a regular meeting thereof held this 17th day of February, 2017, and said plat is in compliance with the provisions of Minnesota Statutes, Section 505.03, Subd. 2.

City Council, City of Lino Lakes, Minnesota

By [Signature] Mayor

By [Signature] Clerk

County Surveyor

I hereby certify that in accordance with Minnesota Statutes, Section 505.021, Subd. 11, this plat has been reviewed and approved this 20 day of AUGUST, 2017.

Larry D. Holm
Larry D. Holm
Anoka County Surveyor

County Auditor/Treasurer

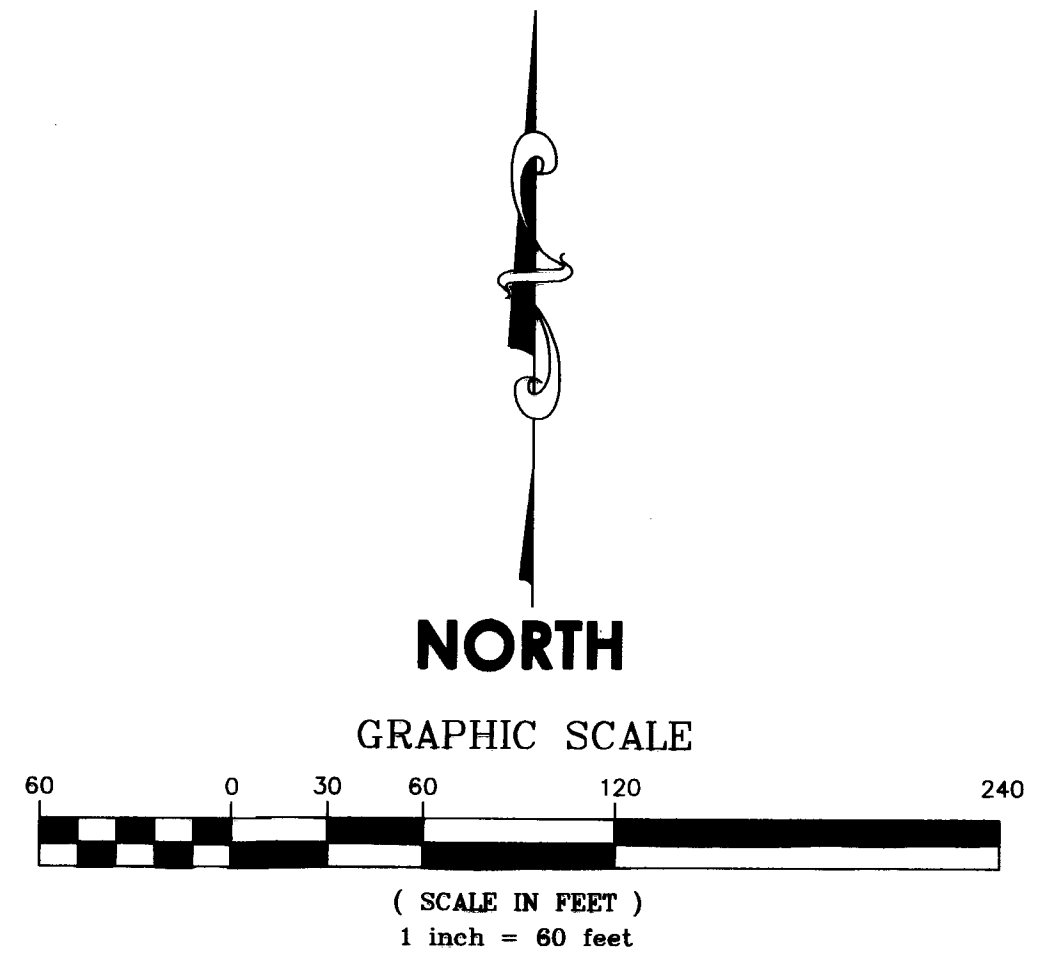
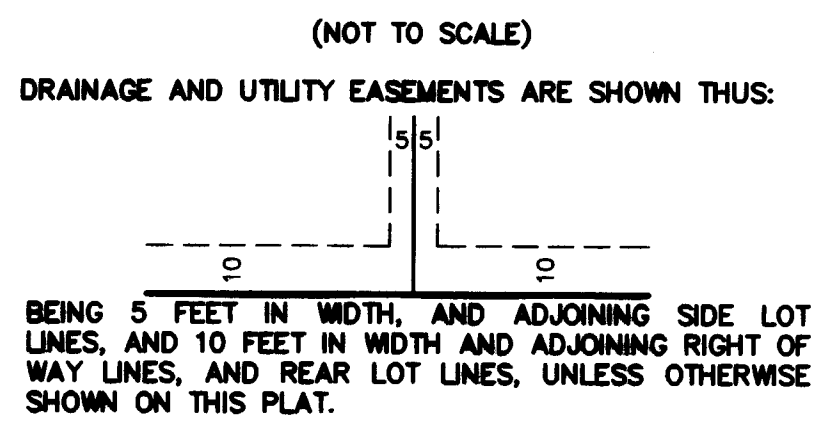
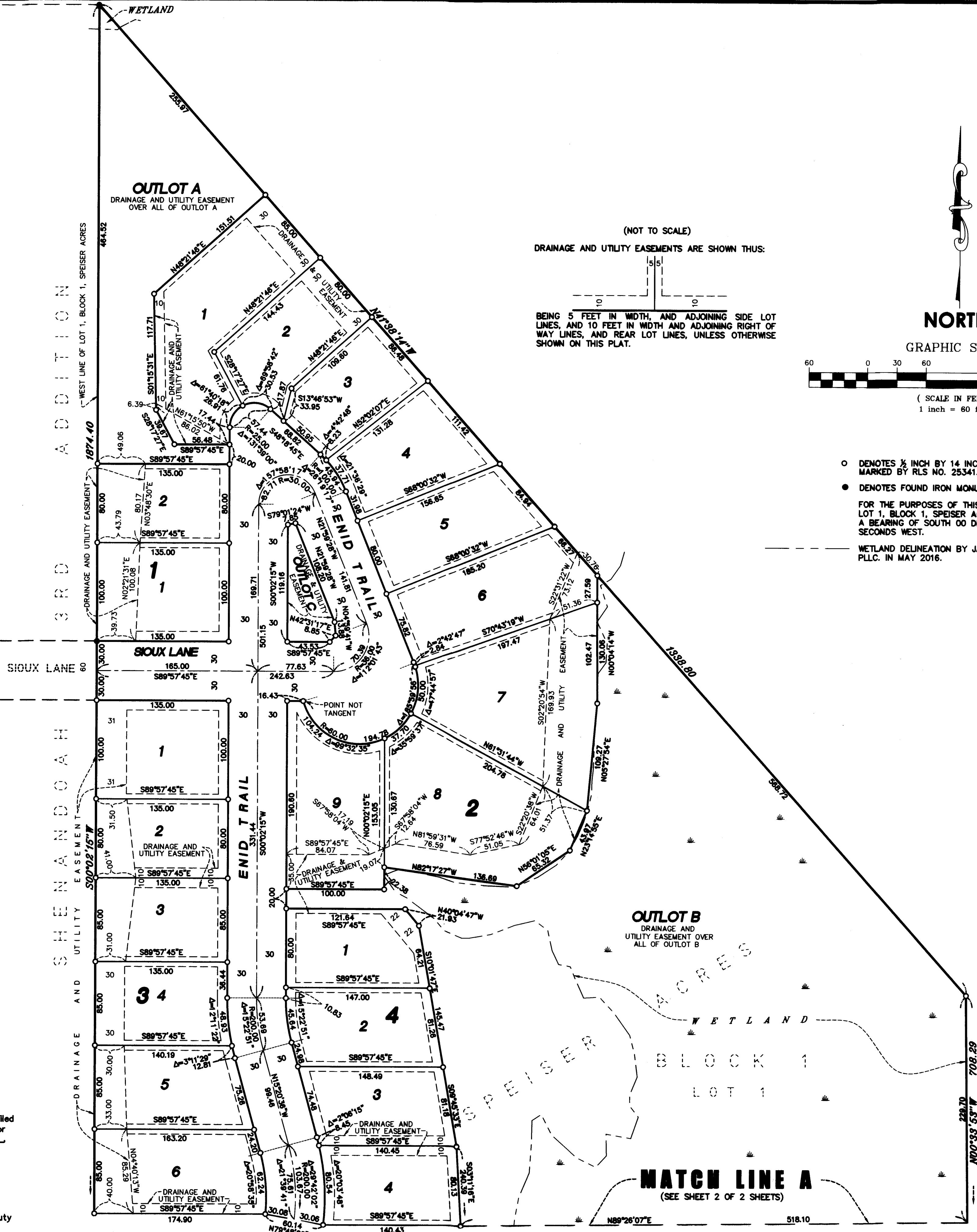
Pursuant to Minnesota Statutes, Section 505.021, Subd. 9, taxes payable in the year 2017 on the land hereinbefore described have been paid. Also, pursuant to Minnesota Statutes, Section 272.12, there are no delinquent taxes and transfer entered this 2 day of AUGUST, 2017.

Jonell M. Sawyer
Property Tax Administrator
By Marcia Earnest Deputy

County Recorder/Registrar of Titles
County of Anoka, State of Minnesota

I hereby certify that this plat of ST CLAIR ESTATES was filed in the office of the County Recorder/Registrar of Titles for public record on this 2 day of AUGUST, 2017 at 11:57 o'clock A.M. and was duly recorded in Book NA Page NA as Document No. 2177331.006

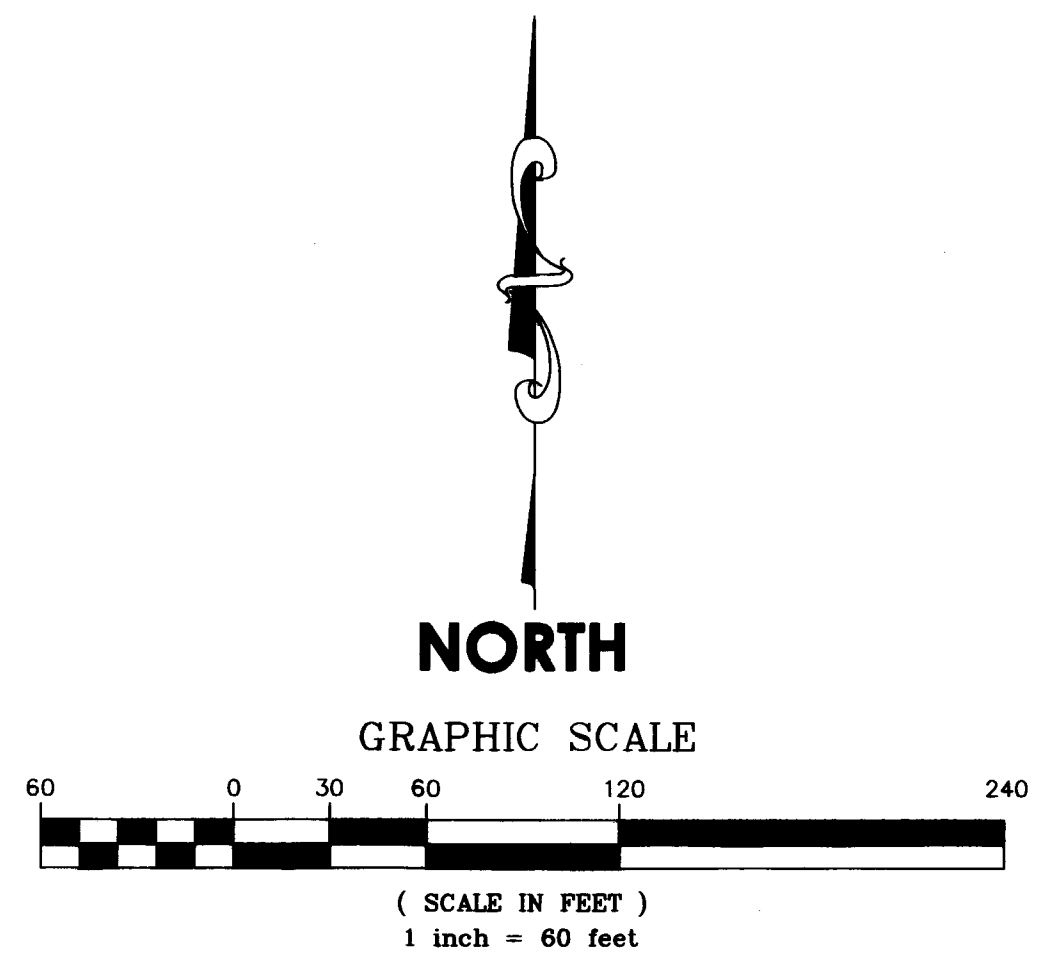
Jonell M. Sawyer
County Recorder/Registrar of Titles
By Marcia Earnest Deputy



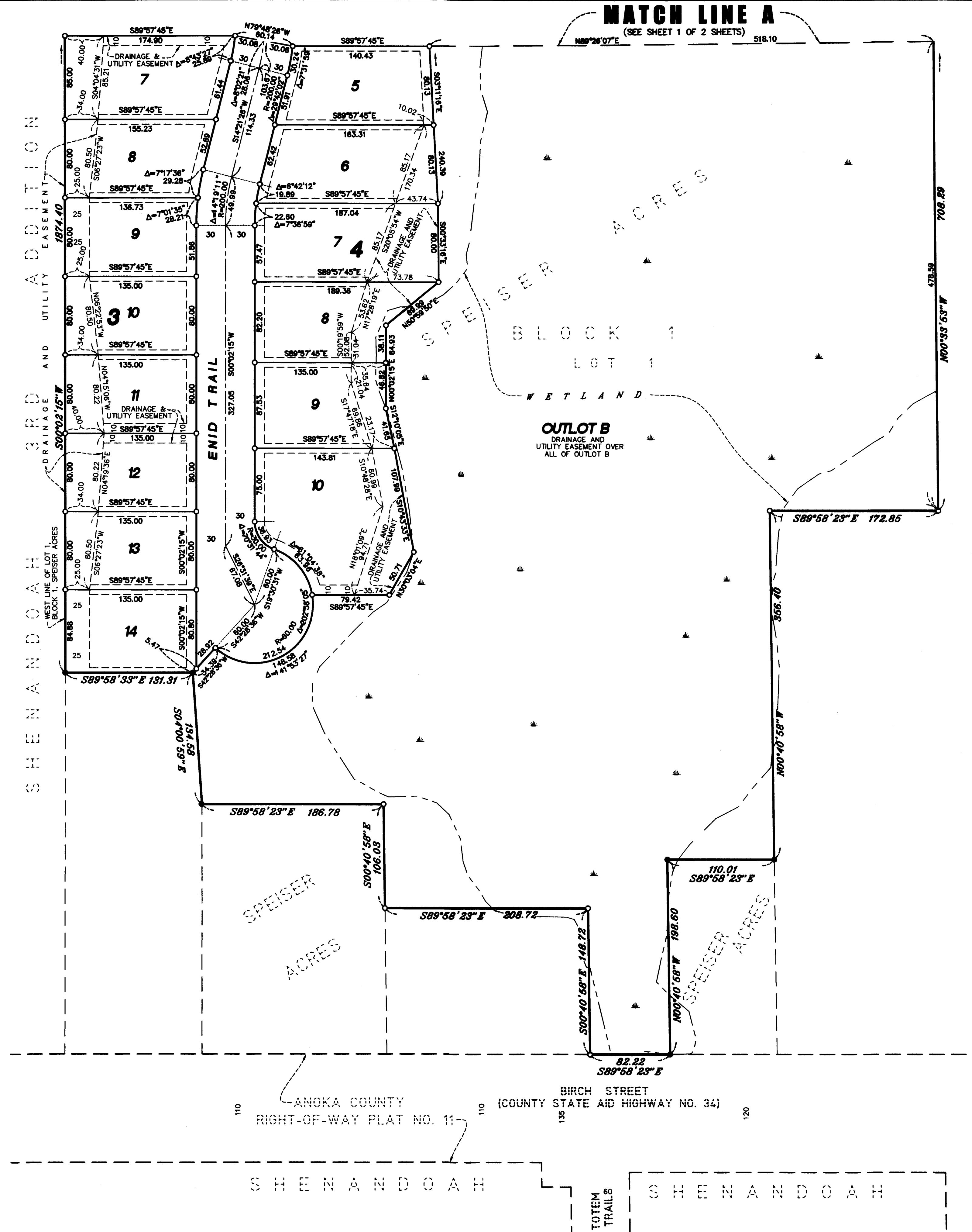
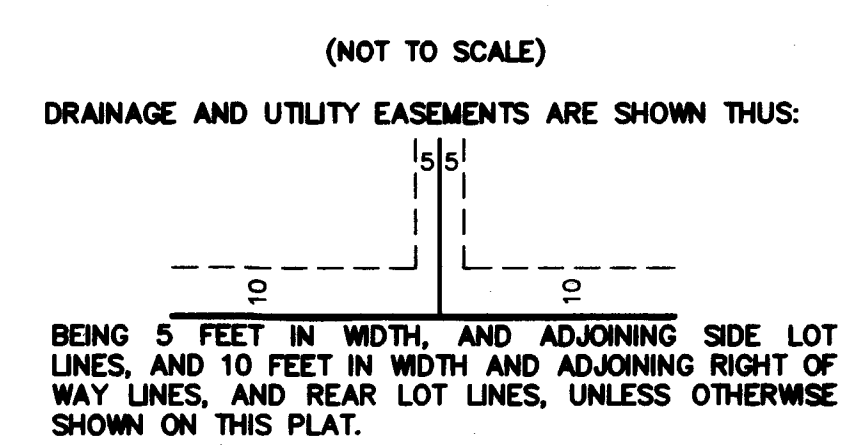
- DENOTES 1/2 INCH BY 14 INCH IRON PIPE MARKED BY RLS NO. 25341.
 - DENOTES FOUND IRON MONUMENT
- FOR THE PURPOSES OF THIS PLAT THE WEST LINE OF LOT 1, BLOCK 1, SPEISER ACRES IS ASSUMED TO HAVE A BEARING OF SOUTH 00 DEGREES 02 MINUTES 15 SECONDS WEST.
- WETLAND DELINEATION BY JACOBSON ENVIRONMENTAL, PLLC. IN MAY 2016.

ST CLAIR ESTATES

City of Lino Lakes
County of Anoka
Sec. 29, T31, R22



- DENOTES 1/2 INCH BY 14 INCH IRON PIPE MARKED BY RLS NO. 25341.
 - DENOTES FOUND IRON MONUMENT
- FOR THE PURPOSES OF THIS PLAT THE WEST LINE OF LOT 1, BLOCK 1, SPEISER ACRES IS ASSUMED TO HAVE A BEARING OF SOUTH 00 DEGREES 02 MINUTES 15 SECONDS WEST.
- WETLAND DELINEATION BY JACOBSON ENVIRONMENTAL, PLLC. IN MAY 2016.



MATCH LINE A
(SEE SHEET 1 OF 2 SHEETS)

110 ANOKA COUNTY RIGHT-OF-WAY PLAT NO. 11 110
135 BIRCH STREET (COUNTY STATE AID HIGHWAY NO. 34) 135
120 120