

ST. CLAIR PARK 7TH ADDITION

City of Blaine
County of Anoka
Sec. 27, T31, R23
Book 22, Join Page 45

KNOW ALL PERSONS BY THESE PRESENTS: That Boulder Contracting, LLC, a Minnesota limited liability company, owner of the following described property:

Outlot B, ST. CLAIR PARK 3RD ADDITION, Anoka County, Minnesota.

AND

The South One Half of Lot 24, SPRING LAKE PARK WOODLAND, Anoka County, Minnesota.

Has caused the same to be surveyed and platted as ST. CLAIR PARK 7TH ADDITION and does hereby dedicate to the public for public use the drainage and utility easements and public way as shown by this plat.

In witness whereof said Boulder Contracting, LLC, a Minnesota limited liability company, has caused these presents to be signed by its proper officer this 22 day of September, 2016.

BOULDER CONTRACTING, LLC

Brian Jansen, as General Manager
Brian Jansen

STATE OF MINNESOTA
COUNTY OF Anoka

This instrument was acknowledged before me this 22nd day of September, 2016 by Brian Jansen, as General Manager of Boulder Contracting, LLC, a Minnesota limited liability company, on behalf of the limited liability company.

Nicole A. Johnson
Nicole A. Johnson
Notary Public, Anoka County, Minnesota
My Commission Expires January 31, 2020

I, Jason E. Rud do hereby certify that this plat was prepared by me or under my direct supervision; that I am a duly Licensed Land Surveyor in the State of Minnesota; that this plat is a correct representation of the boundary survey; that all mathematical data and labels are correctly designated on this plat; that all monuments depicted on this plat have been, or will be correctly set within one year; that all water boundaries and wet lands, as defined in Minnesota Statutes, Section 505.01, Subd. 3, as of the date of this certificate are shown and labeled on this plat; and all public ways are shown and labeled on this plat.

Dated this 22nd day of SEPTEMBER, 2016.

Jason E. Rud
Jason E. Rud, Licensed Land Surveyor
Minnesota License No. 41578

STATE OF MINNESOTA
COUNTY OF Anoka

This instrument was acknowledged before me this 22nd day of September, 2016 by Jason E. Rud.

Nicole A. Johnson
Nicole A. Johnson
Notary Public, Anoka County, Minnesota
My Commission Expires January 31, 2020

City Council, City of Blaine, Minnesota

This plat of ST. CLAIR PARK 7TH ADDITION was approved and accepted by the City Council of the City of Blaine, Minnesota at a regular meeting thereof held this 5th day of May, 2016 and said plat is in compliance with the provisions of Minnesota Statutes, Section 505.03, Subd. 2.

City Council, City of Blaine, Minnesota

By Tom Rye Mayor
By John Jansen Clerk

County Surveyor

I hereby certify that in accordance with Minnesota Statutes, Section 505.021, Subd. 11, this plat has been reviewed and approved this 7th day of MARCH, 2017.

Larry D. Holm
Larry D. Holm
Anoka County Surveyor

COUNTY AUDITOR/TREASURER

Pursuant to Minnesota Statutes, Section 505.021, Subd. 9, taxes payable in the year 2017 on the land hereinbefore described have been paid. Also, pursuant to Minnesota Statutes, Section 272.12, there are no delinquent taxes and transfer entered this 22 day of March, 2017.

Jonell M. Sawyer
Property Tax Administrator
By J. Patterson Deputy

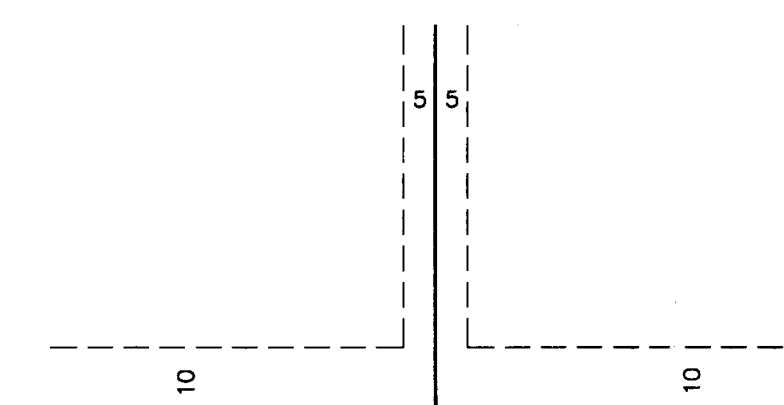
COUNTY RECORDER/REGISTRAR OF TITLES
COUNTY OF ANOKA, STATE OF MINNESOTA

I hereby certify that this plat of ST. CLAIR PARK 7TH ADDITION was filed in the office of the County Recorder/Registrar of Titles for public record on this 7th day of March, 2017, at 11:50 o'clock A.M. and was duly recorded in Book 22 Join Page 45, as Document Number 242635.003

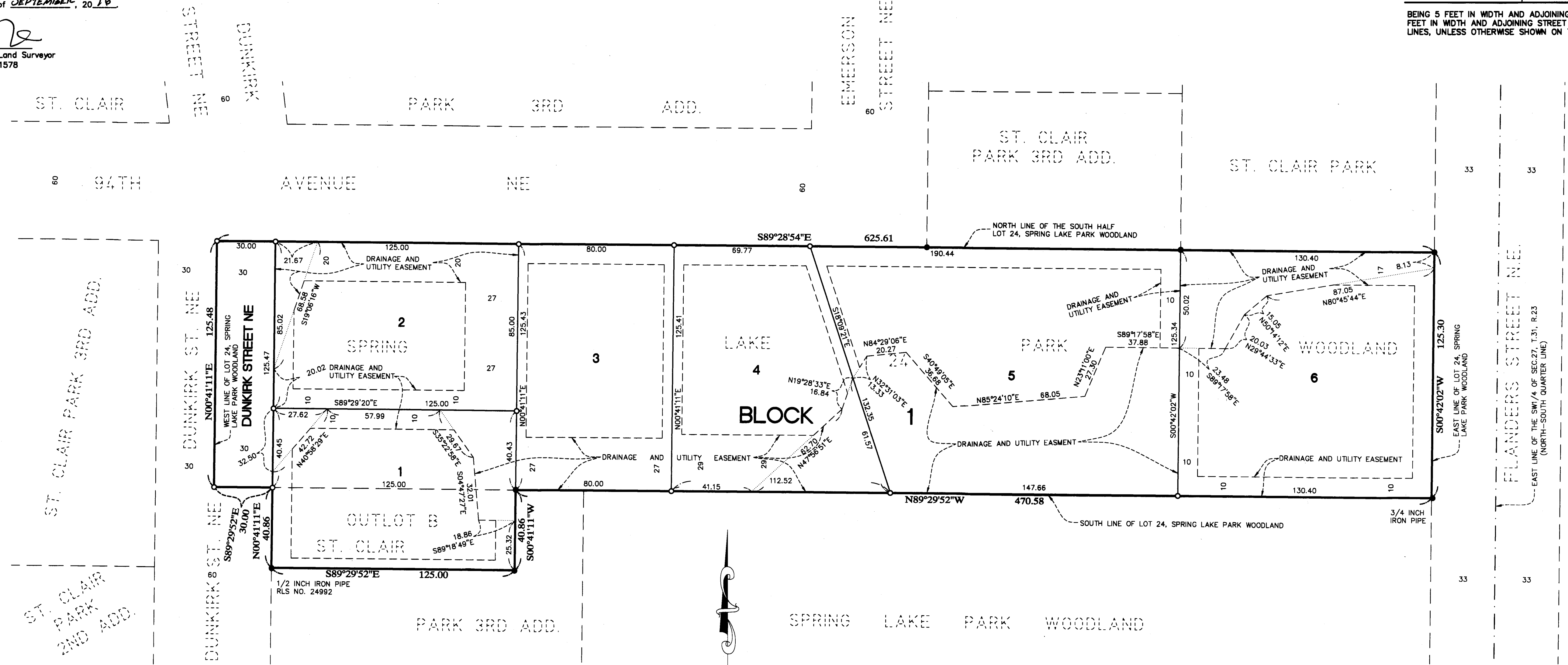
Jonell M. Sawyer
County Recorder/Registrar of Titles
By J. Patterson Deputy

EASEMENT DETAIL

DRAINAGE AND UTILITY EASEMENTS ARE SHOWN THUS:



BEING 5 FEET IN WIDTH AND ADJOINING SIDE LOT LINES AND 10 FEET IN WIDTH AND ADJOINING STREET LINES AND REAR LOT LINES, UNLESS OTHERWISE SHOWN ON THIS PLAT.

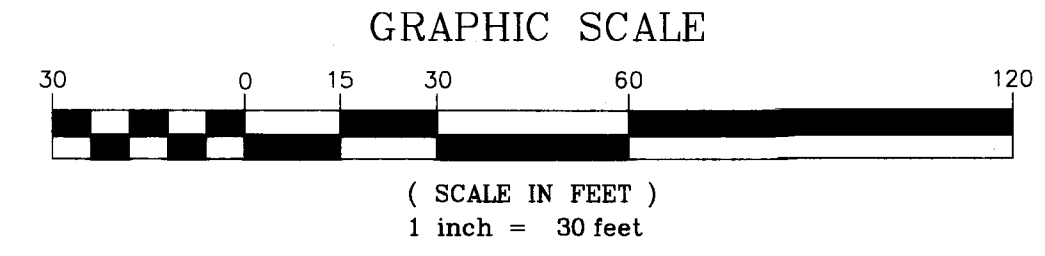


E. G. RUD & SONS, INC.
EST. 1877 Professional Land Surveyors

- DENOTES 1/2 INCH FOUND IRON MONUMENT WITH CAP MARKED RLS 9808, UNLESS OTHERWISE NOTED.
- DENOTES SET 1/2 INCH BY 14 INCH IRON PIPE MARKED BY RLS NO. 41578.

NORTH

For the purposes of this plat the south line of Lot 24, SPRING LAKE PARK WOODLAND, Anoka County, Minnesota, is assumed to have a bearing of North 89 degrees 29 minutes 52 seconds West.



\$56.00