

ST. CLAIR PARK 8TH ADDITION

City of Blaine
County of Anoka
Sec. 27, T31, R23

Book 23 Terms Page 2

KNOW ALL PERSONS BY THESE PRESENTS: That Boulder Contracting, LLC, a Minnesota limited liability company, owner of the following described property:

Outlot A, ST. CLAIR PARK 3RD ADDITION, Anoka County, Minnesota.

Has caused the same to be surveyed and platted as ST. CLAIR PARK 8TH ADDITION and does hereby dedicate to the public for public use the drainage and utility easements as shown by this plat.

In witness whereof said Boulder Contracting, LLC, a Minnesota limited liability company, has caused these presents to be signed by its proper officer this 24 day of March, 2017

BOULDER CONTRACTING, LLC

Brian Jansen, as General Manager

STATE OF MINNESOTA
COUNTY OF Anoka

This instrument was acknowledged before me this 24th day of March, 2017 by Brian Jansen, as General Manager of Boulder Contracting, LLC, a Minnesota limited liability company, on behalf of the limited liability company.

Nicole A. Johnson
Notary Public, Anoka County, Minnesota
My Commission Expires January 31, 2020

I, Jason E. Rud do hereby certify that this plat was prepared by me or under my direct supervision; that I am a duly Licensed Land Surveyor in the State of Minnesota; that this plat is a correct representation of the boundary survey; that all mathematical data and labels are correctly designated on this plat; that all monuments depicted on this plat have been, or will be correctly set within one year; that all water boundaries and wet lands, as defined in Minnesota Statutes, Section 505.01, Subd. 3, as of the date of this certificate are shown and labeled on this plat; and all public ways are shown and labeled on this plat.

Dated this 23rd day of MARCH, 2017

Jason E. Rud
Jason E. Rud, Licensed Land Surveyor
Minnesota License No. 41578

STATE OF MINNESOTA
COUNTY OF Anoka

This instrument was acknowledged before me this 23rd day of March, 2017 by Jason E. Rud.

Nicole A. Johnson
Notary Public, Anoka County, Minnesota
My Commission Expires January 31, 2020

City Council, City of Blaine, Minnesota

This plat of ST. CLAIR PARK 8TH ADDITION was approved, and accepted by the City Council of the City of Blaine, Minnesota at a regular meeting thereof held this 16th day of February, 2017 and said plat is in compliance with the provisions of Minnesota Statutes, Section 505.03, Subd. 2.

City Council, City of Blaine, Minnesota

By Ken Dyer Mayor

By Walter Clerk

County Surveyor

I hereby certify that in accordance with Minnesota Statutes, Section 505.021, Subd. 11, this plat has been reviewed and approved this 17th day of April, 2017.

Larry D. Holm by Charles F. Lutjen, Deputy
Larry D. Holm
Anoka County Surveyor

COUNTY AUDITOR/TREASURER

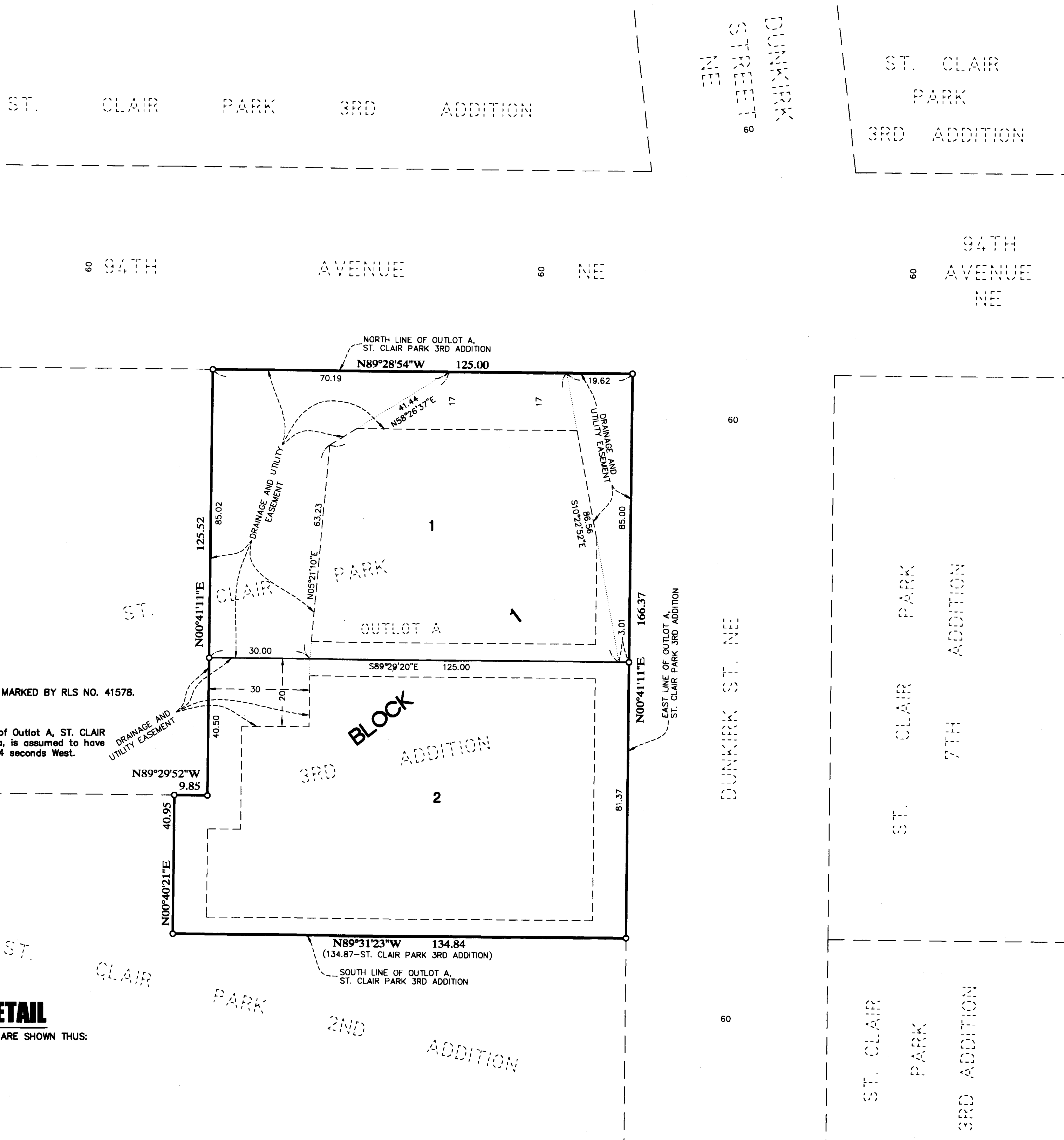
Pursuant to Minnesota Statutes, Section 505.021, Subd. 9, taxes payable in the year 2017 on the land hereinbefore described have been paid. Also, pursuant to Minnesota Statutes, Section 272.12, there are no delinquent taxes and transfer entered this 17 day of April, 2017.

Amell M Sawyer
Property Tax Administrator
By W Patterson Deputy

COUNTY RECORDER/REGISTRAR OF TITLES
COUNTY OF ANOKA, STATE OF MINNESOTA

I hereby certify that this plat of ST. CLAIR PARK 8TH ADDITION was filed in the office of the County Recorder/Registrar of Titles for public record on this 17th day of April, 2017 at 10:50 o'clock A.M. and was duly recorded in Book 23 Terms Page 2 as Document Number 547407.002

Amell M Sawyer
County Recorder/Registrar of Titles
By W Patterson Deputy



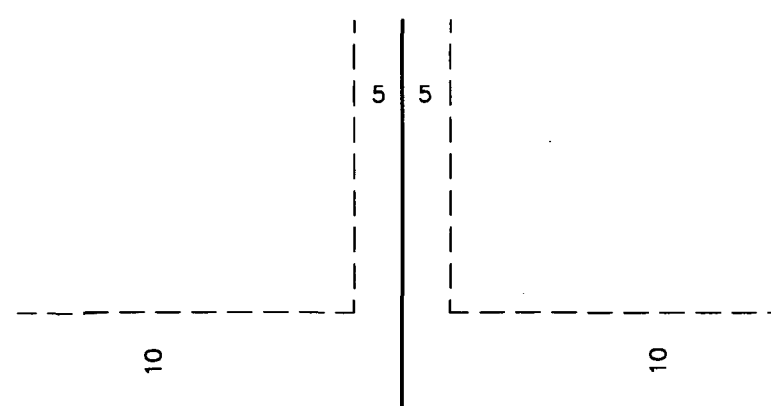
NORTH

o DENOTES SET 1/2 INCH BY 14 INCH IRON PIPE MARKED BY RLS NO. 41578.

For the purposes of this plat the north line of Outlot A, ST. CLAIR PARK 3RD ADDITION, Anoka County, Minnesota, is assumed to have a bearing of North 89 degrees 28 minutes 54 seconds West.

EASEMENT DETAIL

DRAINAGE AND UTILITY EASEMENTS ARE SHOWN THUS:



BEING 5 FEET IN WIDTH AND ADJOINING SIDE LOT LINES AND 10 FEET IN WIDTH AND ADJOINING STREET LINES AND REAR LOT LINES, UNLESS OTHERWISE SHOWN ON THIS PLAT.

