

ST. CLAIR WOODS 3RD ADDITION

City of Blaine
County of Anoka
Sec. 34, T31, R23

KNOW ALL PERSONS BY THESE PRESENTS: That St. Clair Properties Inc., a Minnesota corporation, owner of the following described property:

Outlot A, ST. CLAIR WOODS 2ND ADDITION, Anoka County, Minnesota.

Has caused the same to be surveyed and platted as ST. CLAIR WOODS 3RD ADDITION and does hereby dedicate to the public for public use the drainage and utility easements as shown on this plat.

In witness whereof said St. Clair Properties Inc., a Minnesota corporation, has caused these presents to be signed by its proper officer this 29th day of January, 2015.

ST. CLAIR PROPERTIES INC.

Jamie Jensen
Jamie Jensen, President

STATE OF Minnesota
COUNTY OF Anoka

This instrument was acknowledged before me this 29th day of January, 2015 by Jamie Jensen, as president of St. Clair Properties Inc., a Minnesota corporation, on behalf of the corporation.

Nicole A. Johnson
Nicole A. Johnson
Notary Public, Anoka County, Minnesota
My Commission Expires January 31, 2020

I Jason E. Rud do hereby certify that this plat was prepared by me or under my direct supervision; that I am a duly Licensed Land Surveyor in the State of Minnesota; that this plat is a correct representation of the boundary survey; that all mathematical data and labels are correctly designated on this plat; that all monuments depicted on this plat have been, or will be correctly set within one year; that all water boundaries and wet lands, as defined in Minnesota Statutes, Section 505.01, Subd. 3, as of the date of this certificate are shown and labeled on this plat; and all public ways are shown and labeled on this plat.

Dated this 29th day of JANUARY, 2015.

Jason E. Rud
Jason E. Rud, Licensed Land Surveyor
Minnesota License No. 41578

STATE OF MINNESOTA
COUNTY OF Anoka

This instrument was acknowledged before me this 29th day of January, 2015 by Jason E. Rud.

Nicole A. Johnson
Nicole A. Johnson
Notary Public, Anoka County, Minnesota
My Commission Expires January 31, 2020

City Council, City of Blaine, Minnesota

This plat of ST. CLAIR WOODS 3RD ADDITION was approved and accepted by the City Council of the City of Blaine, Minnesota at a regular meeting thereof held this 1st day of August, 2014, and said plat is in compliance with the provisions of Minnesota Statutes, Section 505.03, Subd. 2.

City Council, City of Blaine, Minnesota

By Jason E. Rud Mayor
By Callie Jensen Clerk

County Surveyor

I hereby certify that in accordance with Minnesota Statutes, Section 505.021, Subd. 11, this plat has been reviewed and approved this 5th day of February, 2015.

Larry D. Holm by Charles F. Geizer, Deputy
Larry D. Holm
Anoka County Surveyor

County Auditor/Treasurer

Pursuant to Minnesota Statutes, Section 505.021, Subd. 9, taxes payable in the year 2015 on the land hereinbefore described have been paid. Also, pursuant to Minnesota Statutes, Section 272.12, there are no delinquent taxes and transfer entered this 5th day of February, 2015.

Jonell M. Sawyer
Jonell M. Sawyer
Property Tax Administrator
By CGT Deputy

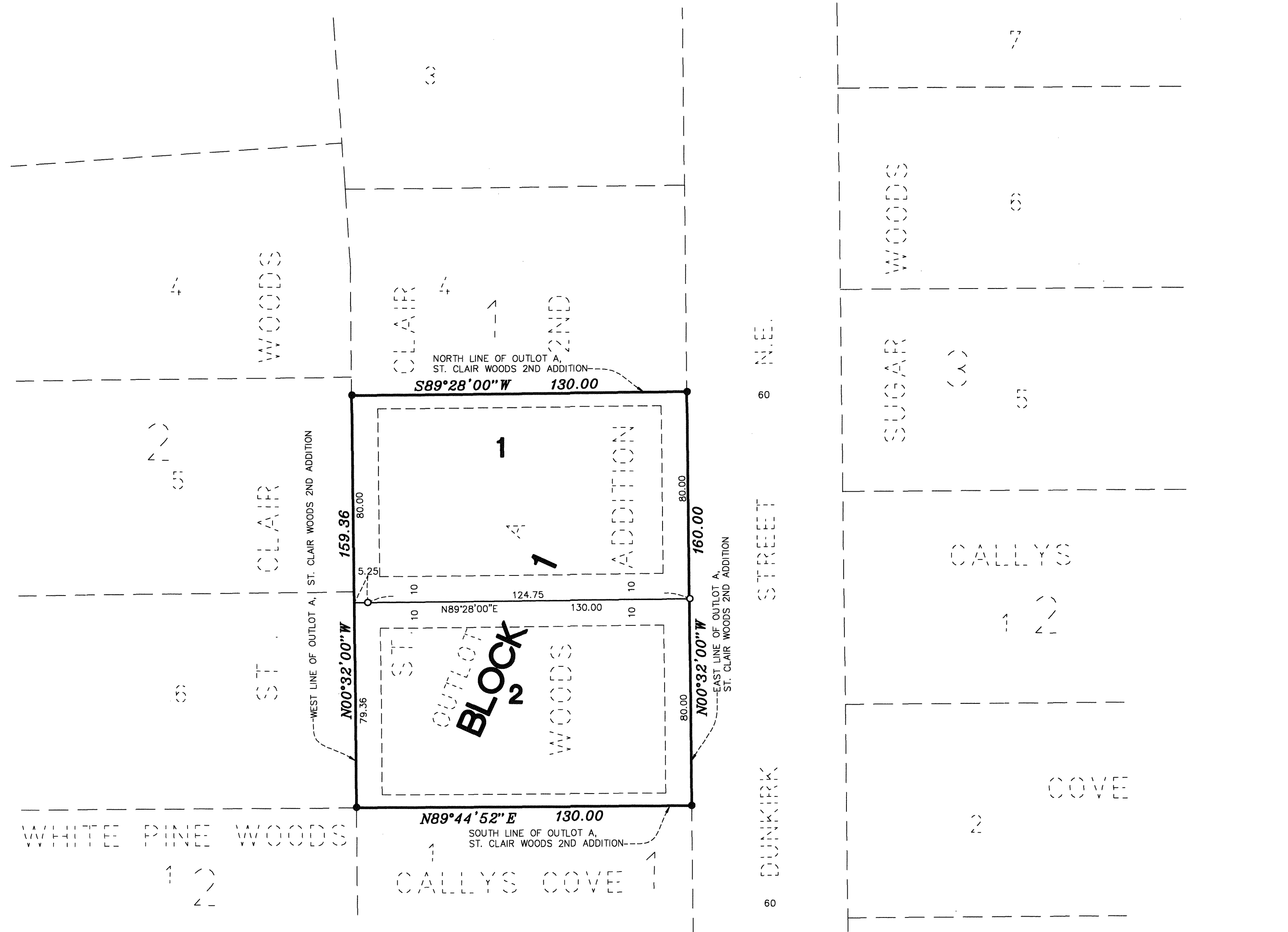
County Recorder/Registrar of Titles

County of Anoka, State of Minnesota

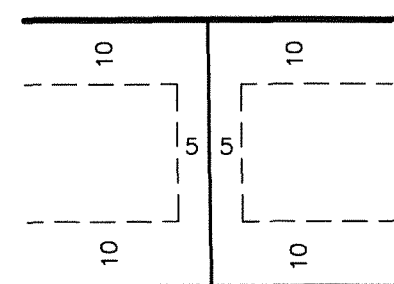
I hereby certify that this plat of ST. CLAIR WOODS 3RD ADDITION was filed in the office of the County Recorder/Registrar of Titles for public record on this 5th day of February, 2015 at 4:10 o'clock P.M. and was duly recorded in Book 22 Page 11, as Document Number 528274.002.

Jonell M. Sawyer
Jonell M. Sawyer
County Recorder/Registrar of Titles
By CGT Deputy

\$66.00



DRAINAGE AND UTILITY EASEMENTS ARE SHOWN AS THUS:



BEING 5 FEET IN WIDTH AND ADJOINING SIDE LOT LINES, AND 10 FEET IN WIDTH AND ADJOINING STREET LINES AND REAR LOT LINES, UNLESS OTHERWISE SHOWN ON THE PLAT.

LEGEND:

- DENOTES FOUND 1/2 INCH BY 18 INCH IRON MONUMENT MARKED BY R.L.S. 9808
- DENOTES SET 1/2 INCH BY 14 INCH IRON MONUMENT MARKED BY R.L.S. 41578

For the purposes of this plat the West line of Outlot A, ST. CLAIR WOODS 2ND ADDITION is assumed to have a bearing of N00°32'00\"/>

GRAPHIC SCALE



(SCALE IN FEET)
1 inch = 30 feet