

ST. PATRICK'S CEMETERY

TOWNSHIP OF OAK GROVE COUNTY OF ANOKA

KNOW ALL PERSONS BY THESE PRESENTS: That we, The Church of St. Patrick's of Cedar Creek, a religious corporation under the laws of the State of Minnesota, owners and proprietors of the following described property situated in the County of Anoka, State of Minnesota, to-wit:

The east 466.69 feet of the west 1126.69 feet of the south 466.69 feet of the Northwest Quarter of the Southeast Quarter of Section 22, Township 33, Range 24, Anoka County, Minnesota, as measured along the south and west lines thereof.

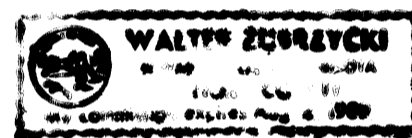
Have caused the same to be surveyed and platted as ST. PATRICK'S CEMETERY, the same to be occupied exclusively as a cemetery for the burial of the dead, and for purposes necessary and proper thereto and The Church of St. Patrick's of Cedar Creek hereby dedicates the same forever to the purposes herein mentioned. In witness whereof said The Church of St. Patrick's of Cedar Creek has caused these presents to be signed by its proper officers this 20 day of August, 1985.

SIGNED:

The Church of St. Patrick's of Cedar Creek

By John T. Bauer Its Vice President By Judith A. Wicklander Its Secretary

STATE OF MINNESOTA COUNTY OF Anoka The foregoing instrument was acknowledged before me this 20 day of August, 1985 by John T. Bauer, Vice President and Judith A. Wicklander, Secretary of The Church of St. Patrick's of Cedar Creek, a Minnesota religious corporation, on behalf of the corporation.



Walter Z. Grogan
Notary Public, Anoka County, Minnesota
My Commission expires Aug 2-1989

I hereby certify that I have surveyed and platted the land described in the dedication on this plat as ST. PATRICK'S CEMETERY; that the plat is a correct representation of said survey; that all distances are correctly shown on said plat in feet and hundredths of a foot; that the monuments have been correctly placed in the ground as shown; that the outside boundaries are correctly designated on said plat; and that there are no wet lands or public highways to be designated on said plat other than as shown thereon.

Jeffrey N. Caine
Registered Land Surveyor, Minnesota Reg. No. 12251

STATE OF MINNESOTA COUNTY OF ANOKA The surveyors certificate was acknowledged before me, a Notary Public, this 9th day of August, 1985, by Jeffrey N. Caine, Land Surveyor.

Nancy G. Caine
Notary Public, Anoka County, Minnesota
My Commission expires July 23, 1986

Checked and approved this 23rd day of August, 1985.

Robert W. Anderson
Anoka County Surveyor

I HEREBY CERTIFY THAT THE TAXES PAYABLE IN THE YEAR 1985 ON THE LANDS DESCRIBED WITHIN ARE PAID
Donald Ray W. Williams
Anoka County Treasurer

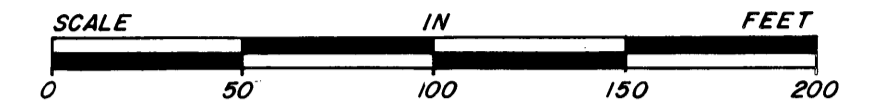
"NO DELINQUENT TAXES AND TRANSFER ENTERED"

Aug 23rd 19 85

Charles R. Johnson
Auditor, Anoka County

BY J.R. Lamm
Deputy

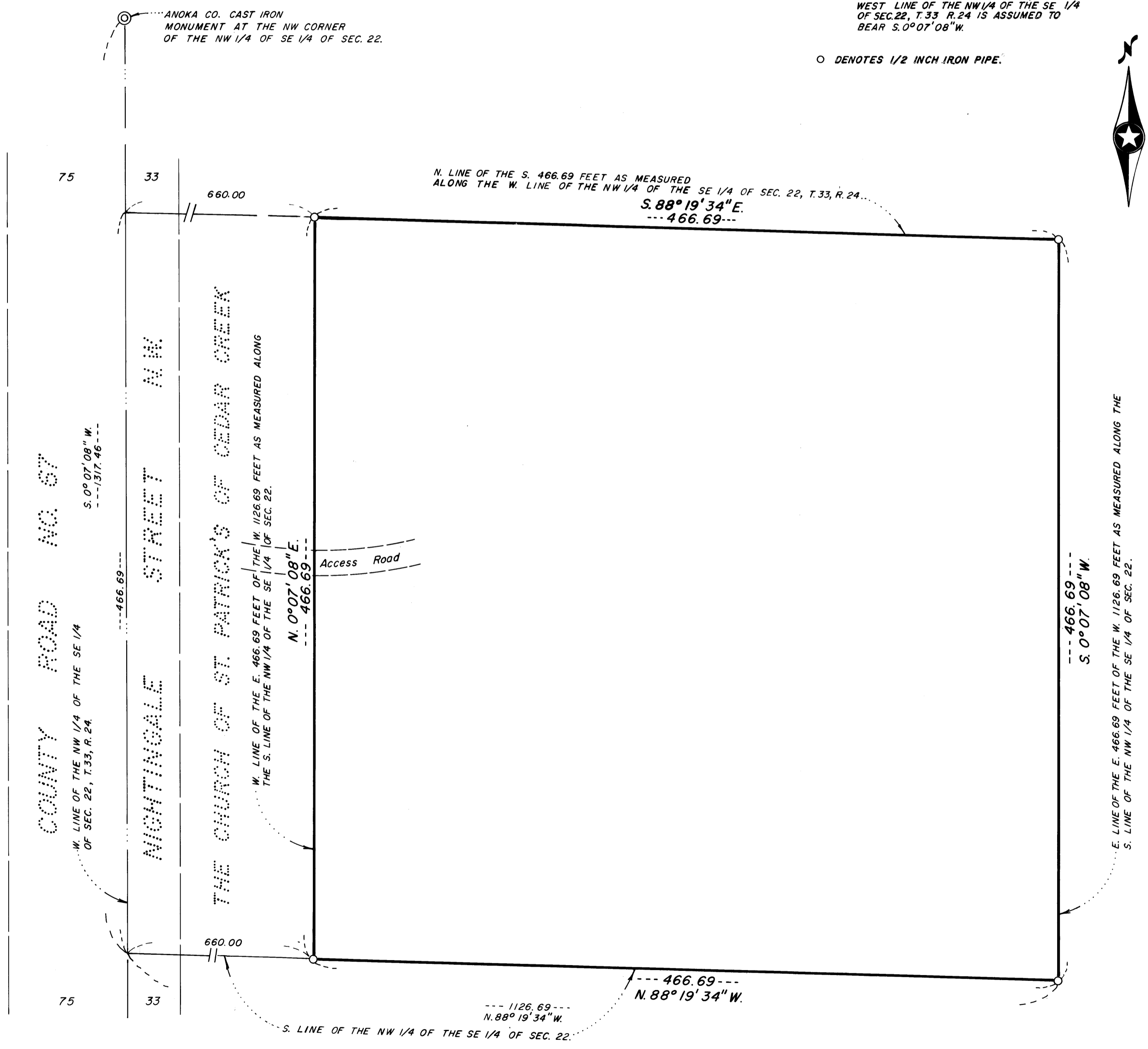
684404
OFFICE OF COUNTY RECORDER
STATE OF MINNESOTA, COUNTY OF ANOKA
I hereby certify that the within instrument was filed in this office for record on the AUG 28 1985 A.D., 1985 at 11:45 o'clock A.M., and was duly recorded in book 3506 page 33
Fred J. Oswald
County Recorder
By V. L. Hollenness



SCALE: 1 INCH = 50 FEET

NOTE: FOR THE PURPOSES OF THIS PLAT, THE WEST LINE OF THE NW 1/4 OF THE SE 1/4 OF SEC. 22, T.33, R.24 IS ASSUMED TO BEAR S. 0° 07' 08" W.

O DENOTES 1/2 INCH IRON PIPE.



CANE & ASSOCIATES
LAND SURVEYORS, INC.