

STATION 2ND ADDITION

BK 80 of Abet pg 8

CITY OF RAMSEY
COUNTY OF ANOKA
SEC. 28, T. 32, R. 25

KNOW ALL PERSONS BY THESE PRESENTS: That D.R. Horton, Inc. - Minnesota, a Delaware corporation, owner of the following described property:

Outlots A, B, C, D and E, STATION, according to the recorded plat thereof, Anoka County, Minnesota.

Has caused the same to be surveyed and platted as STATION 2ND ADDITION and does hereby dedicate to the public for public use the drainage and utility easements as created on this plat.

In witness whereof said D.R. Horton, Inc. - Minnesota, a Delaware corporation, has caused these presents to be signed by its proper officer this 8th day of May, 20 17.

D.R. Horton, Inc. - Minnesota

By: [Signature] its Vice President

STATE OF Minnesota
COUNTY OF Dakota

This instrument was acknowledged before me on 8th day of May, 20 17 by James R. Stalke its Vice President of D.R. Horton, Inc. - Minnesota, a Delaware corporation, on behalf of the corporation.

[Signature] Jada Greenwaldt
Dakota County, Minnesota
My commission expires January 31, 2021

I Marcus F. Hampton do hereby certify that this plat was prepared by me or under my direct supervision; that I am a duly Licensed Land Surveyor in the State of Minnesota; that this plat is a correct representation of the boundary survey; that all mathematical data and labels are correctly designated on this plat; that all monuments depicted on this plat have been, or will be correctly set within one year; that all water boundaries and wet lands, as defined in Minnesota Statutes, Section 505.01, Subd. 3, as of the date of this certificate are shown and labeled on this plat; and all public ways are shown and labeled on this plat.

Dated this 5 day of May, 20 17.

[Signature]
Marcus F. Hampton, Licensed Land Surveyor, Minnesota License No. 47481

STATE OF MINNESOTA
COUNTY OF Dakota

This instrument was acknowledged before me on this 5th day of May, 20 17 by Marcus F. Hampton.

[Signature] Patrick Miller
Scott County, Minnesota
My commission expires January 31, 20 19

CITY COUNCIL, CITY OF RAMSEY, MINNESOTA

This plat of STATION 2ND ADDITION was approved and accepted by the City Council of the City of Ramsey, Minnesota at a regular meeting thereof held this 25th day of April, 20 17, and said plat is in compliance with the provisions of Minnesota Statutes, Section 505.03, Subd. 2.

By: [Signature] Mayor
[Signature] Clerk

ANOKA COUNTY SURVEYOR

I hereby certify that in accordance with Minnesota Statutes, Section 505.021, Subd. 11, this plat has been reviewed and approved this 17th day of MAY, 20 17.

[Signature]
Larry D. Hojdm, Anoka County Surveyor

COUNTY AUDITOR/TREASURER

Pursuant to Minnesota Statutes, Section 505.021, Subd. 9, taxes payable in the year 20 17 on the land hereinbefore described have been paid. Also, pursuant to Minnesota Statutes, Section 272.12, there are no delinquent taxes and transfer entered this 17 day of May, 20 17.

[Signature]
Jonell M Sawyer
Property Tax Administrator

By: [Signature] Deputy

COUNTY RECORDER/REGISTRAR OF TITLES COUNTY OF ANOKA, STATE OF MINNESOTA

I hereby certify that this plat of STATION 2ND ADDITION was filed in the office of the County Recorder/Registrar of Titles for public record on this 17 day of May, 20 17, at 11:45 o'clock A. M. and was duly recorded in Book 80 of Abet Page 8, as Document Number 2170648.001.

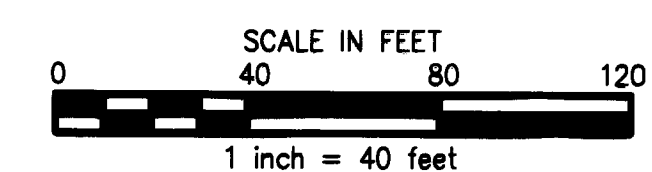
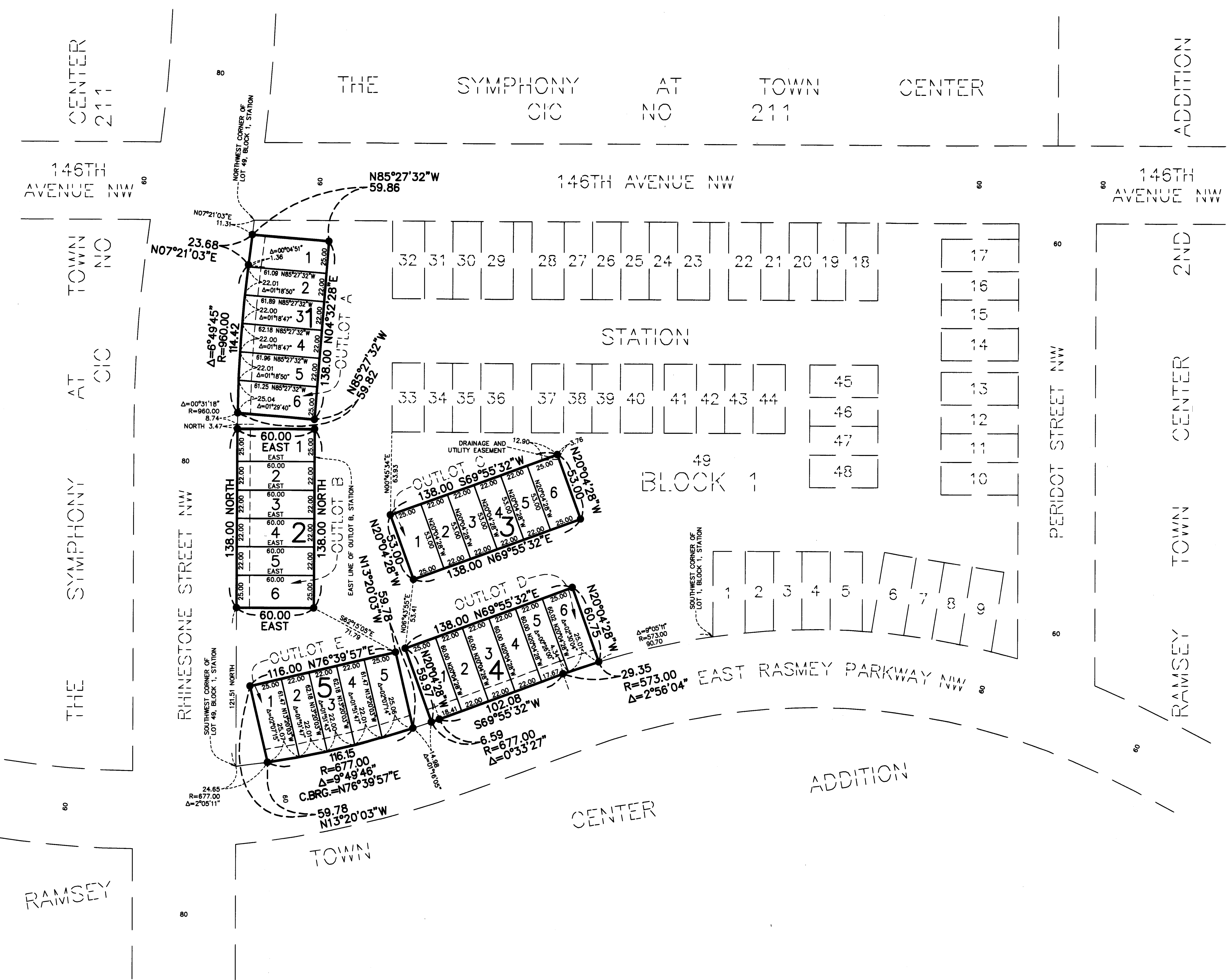
[Signature]
Jonell M Sawyer
County Recorder/Registrar of Titles

By: [Signature] Deputy

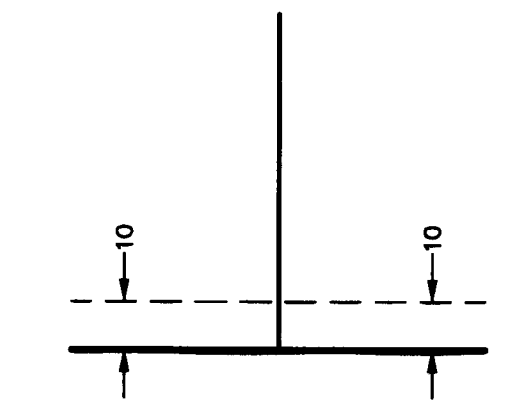
STATION 2ND ADDITION

BR80 of A6et pg 6

CITY OF RAMSEY
COUNTY OF ANOKA
SEC. 28, T. 32, R. 25



DRAINAGE AND UTILITY EASEMENTS
ARE SHOWN THUS:



BEING 10 FEET IN WIDTH, UNLESS
OTHERWISE INDICATED, ADJOINING
RIGHT OF WAY LINES, AS SHOWN
ON THE PLAT.

FOR THE PURPOSES OF THIS PLAT, THE EAST LINE
OF OUTLOT B, STATION, IS ASSUMED TO HAVE A
BEARING OF NORTH

NOTE: ALL MONUMENTS REQUIRED BY MINNESOTA STATUTE AND
NOT SHOWN ON THIS PLAT WILL BE SET WITHIN ONE
YEAR OF THE RECORDING DATE OF THIS PLAT, AND
SHALL BE EVIDENCED BY A 1/2 INCH BY 14 INCH IRON
PIPE MARKED BY R.L.S. NO. 47481.

● DENOTES FOUND 1/2 INCH IRON MONUMENT
MARKED BY LICENSE NO. 47481.