

STEWART ACRES SECOND ADDITION

OFFICIAL PLAT

CITY OF OAK GROVE
COUNTY OF ANOKA
SEC. 08, TWP. 33, RNG. 24
ESTATES

KNOW ALL PERSONS BY THESE PRESENTS: That John Lorenzen, Personal Representative of the Estate of Virginia M. Stewart, a single person, owner of the following described property:

The Northeast Quarter of the Northeast Quarter and the Southeast Quarter of the Northeast Quarter, all in Section 8, Township 33, Range 24, Anoka County, Minnesota, EXCEPT that part platted as RAMBLIN' RUM ESTATES and EXCEPT that part platted as SWANSON VILLAS OF LAKE GEORGE.

Has caused the same to be surveyed and platted as STEWART ACRES SECOND ADDITION and does hereby dedicate to the public for public use the public way and the drainage and utility easements as created by this plat.

In witness whereof said John Lorenzen, Personal Representative of the Estate of Virginia M. Stewart, a single person, has caused these presents to be signed by its proper officer this 25th day of June, 2019.

Estate of Virginia M. Stewart

John Lorenzen
John Lorenzen, Personal Representative
of the Estate of Virginia M. Stewart

STATE OF MINNESOTA
COUNTY OF ANOKA

This instrument was acknowledged before me this 25th day of June, 2019, by John Lorenzen, Personal Representative of the Estate of Virginia M. Stewart, a single person.

Jade Masun (signature)
Jade Masun (print name)
Notary Public, Anoka County, Minnesota
My Commission Expires 1/31/2023

I, Eric R. Vickaryous do hereby certify that this plat was prepared by me or under my direct supervision; that I am a duly Licensed Land Surveyor in the State of Minnesota; that this plat is a correct representation of the boundary survey; that all mathematical data and labels are correctly designated on this plat; that all monuments depicted on this plat have been, or will be correctly set within one year; that all water boundaries and wet lands, as defined in Minnesota Statutes, Section 505.01, Subd. 3, as of the date of this certificate are shown and labeled on this plat; and all public ways are shown and labeled on this plat.

Dated this 21st day of JUNE, 2019.

Eric R. Vickaryous
Eric R. Vickaryous, Licensed Land Surveyor
Minnesota License Number 44125

STATE OF MINNESOTA
COUNTY OF ANOKA

This instrument was acknowledged before me this 21st day of JUNE, 2019, by Eric R. Vickaryous.

Shamiah Thorpe (signature)
Shamiah Thorpe (print name)
Notary Public, Anoka County, Minnesota
My Commission Expires Jan. 31st, 2022

CITY COUNCIL, CITY OF OAK GROVE, MINNESOTA

This plat of STEWART ACRES SECOND ADDITION was approved and accepted by the City Council of the City of Oak Grove, Minnesota at a regular meeting thereof held this 29th day of April, 2019, and said plat is in compliance with the provisions of Minnesota Statutes, Section 505.03, Subd. 2.

CITY COUNCIL, CITY OF OAK GROVE, MINNESOTA

By: *Sam Deano* Mayor

By: *Anthony Nuh* Clerk

COUNTY SURVEYOR

I hereby certify that in accordance with Minnesota Statutes, Section 505.021, Subd. 11, this plat has been reviewed and approved this 27th day of June, 2019.

By: *Charles F. Gitzen*
Charles F. Gitzen
Anoka County Surveyor

COUNTY AUDITOR/TREASURER

Pursuant to Minnesota Statutes, Section 505.021, Subd. 9, taxes payable in the year 2019 on the land hereinbefore described have been paid. Also, pursuant to Minnesota Statutes, Section 272.12, there are no delinquent taxes and transfer entered this 25 day of June, 2019.

Donell M. Sawyer
Property Tax Administrator

By: *Becky Hanson*, Deputy

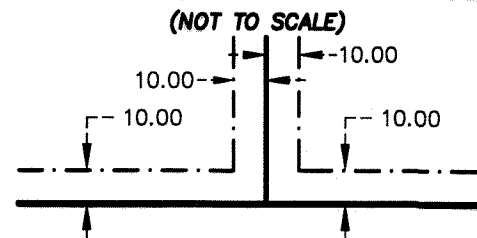
COUNTY RECORDER/REGISTRAR OF TITLES
COUNTY OF ANOKA, STATE OF MINNESOTA

I hereby certify that this plat of STEWART ACRES SECOND ADDITION was filed in the office of the County Recorder/Registrar of Titles for public record on this 25th day of June, 2019, at 1 o'clock P. M. and was duly recorded as Document Number 2230305.001 2230305.001

Donell M. Sawyer
County Recorder/Registrar of Titles

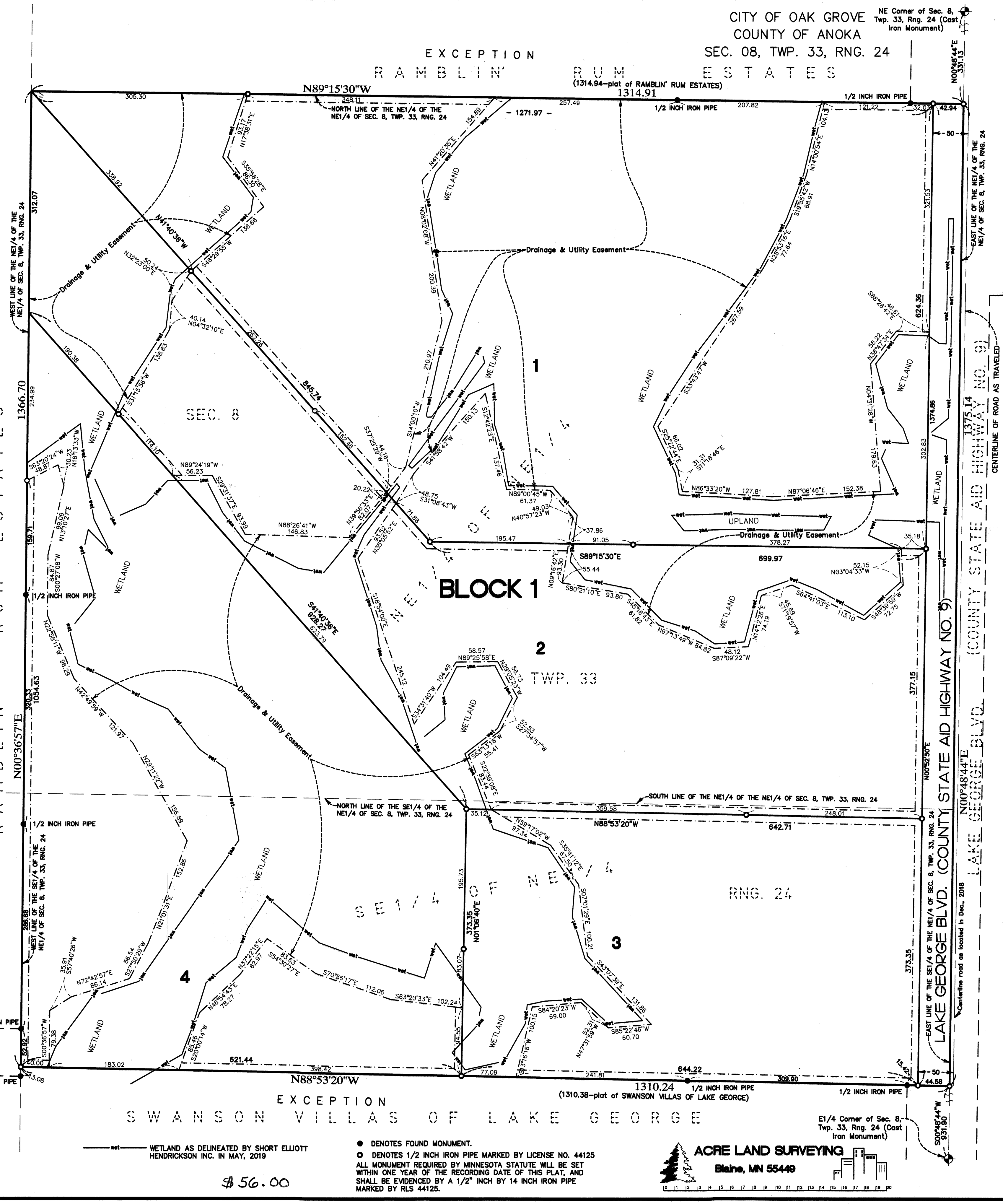
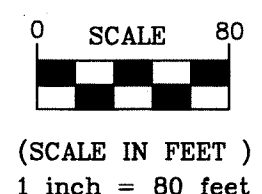
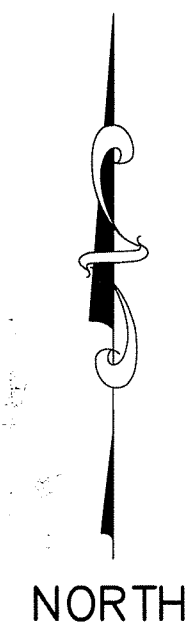
By: *Becky Hanson* Deputy

DRAINAGE AND UTILITY EASEMENTS ARE SHOWN THIS (NOT TO SCALE)



FOR THE PURPOSES OF THIS PLAT, THE EAST LINE OF THE NE1/4 OF THE NE1/4 OF SEC. 8, TWP. 33, RNG. 24, ANOKA COUNTY, MINNESOTA, IS ASSUMED TO BEAR N00°48'44"E.

BEING 10 FEET IN WIDTH AND ADJOINING SIDE LOT LINES, AND BEING 10 FEET IN WIDTH AND ADJOINING STREET AND REAR LOT LINES, UNLESS OTHERWISE SHOWN ON THIS PLAT.



\$ 56.00

● DENOTES FOUND MONUMENT.
○ DENOTES 1/2 INCH IRON PIPE MARKED BY LICENSE NO. 44125
ALL MONUMENT REQUIRED BY MINNESOTA STATUTE WILL BE SET WITHIN ONE YEAR OF THE RECORDING DATE OF THIS PLAT, AND SHALL BE EVIDENCED BY A 1/2" INCH BY 14 INCH IRON PIPE MARKED BY RLS 44125.

ACRE LAND SURVEYING
Blaine, MN 55440
E1/4 Corner of Sec. 8, Twp. 33, Rng. 24 (Cast Iron Monument)