

1908043.0 Abstract
 OFFICE OF COUNTY RECORDER
 STATE OF MINNESOTA, COUNTY OF ANOKA
 I hereby certify that the within instru-
 ment was filed in this office to record
 on the 28 Oct. AD. 2004
 9:35 o'clock AM, and was duly recorded
 in Book 08 Abstr page 21
 Maureen J. Devine
 County Recorder
 MLE
 Deputy

KNOW ALL PERSONS BY THESE PRESENTS: That Donald L. Stokes and Mary F. Stokes, husband and wife, owners and proprietors, and Brenshell Homes, Inc., a Minnesota corporation, contract purchaser of the following described property situated in the County of Anoka, State of Minnesota, to-wit:

The South Half of the East Half of the Southeast Quarter of the Northeast Quarter (except the South Half of the Southeast Quarter of the Southeast Quarter of the Northeast Quarter) Section 9, Township 32, Range 23, Anoka County, Minnesota.

Have caused the same to be surveyed and platted as STOKES ADDITION and do hereby donate and dedicate to the public for public use forever the avenue, street and drainage and utility easements as shown on the plat. In witness whereof said Donald L. Stokes and Mary F. Stokes have hereunto set their hands this 7th day of October, 2004. Also in witness whereof said Brenshell Homes, Inc., has caused these presents to be signed by its proper officer this day of October, 2004.

SIGNED:

Donald L. Stokes
 Donald L. Stokes

Mary F. Stokes
 Mary F. Stokes

BRENShell HOMES, INC.
Thomas A. Stokes
 Thomas A. Stokes, as President

STATE OF MINNESOTA) The foregoing instrument was acknowledged before me this 7th day of October
 COUNTY OF ANOKA) 2004, by Donald L. Stokes and Mary F. Stokes, husband and wife.

Nickie A. Sonsma
 Notary Public
 Minnesota
 My Commission Expires Jan. 31, 2007

Nickie A. Sonsma
 Notary Public, Hennepin County, Minnesota
 My Commission expires 1-31-07

STATE OF MINNESOTA) The foregoing instrument was acknowledged before me this 1st day of October
 COUNTY OF ANOKA) 2004, by Thomas A. Stokes, as President of Brenshell Homes, Inc., a Minnesota corporation, on behalf of the corporation.

Nickie A. Sonsma
 Notary Public
 Minnesota
 My Commission Expires Jan. 31, 2007

Nickie A. Sonsma
 Notary Public, Hennepin County, Minnesota
 My Commission expires 1-31-07

I hereby certify that I have surveyed and platted the land described in the dedication on this plat as STOKES ADDITION; that this plat is a correct representation of said survey; that all distances are correctly shown on said plat in feet and hundredths of a foot; that all monuments have been correctly placed in the ground as shown, or shall be correctly placed in the ground within one year after the recording date of this plat; that the outside boundaries are correctly designated on said plat; and that there are no wetlands, in accordance with M.S. 505.02 Subdivision 1, or public highways to be designated on said plat other than as shown thereon.

Jeffrey N. Caine
 Jeffrey N. Caine, Registered Land Surveyor
 Minnesota License No. 12251

STATE OF MINNESOTA) The surveyor's certificate was acknowledged before me a Notary Public, this 17th
 COUNTY OF ANOKA) day of August, 2004, by Jeffrey N. Caine, Land Surveyor.

Jill M. Kent
 Notary Public, Minnesota
 My Commission Expires 1-31-05

Jill M. Kent
 Notary Public, Anoka County, Minnesota
 My Commission expires 01-31-05

CITY OF HAM LAKE

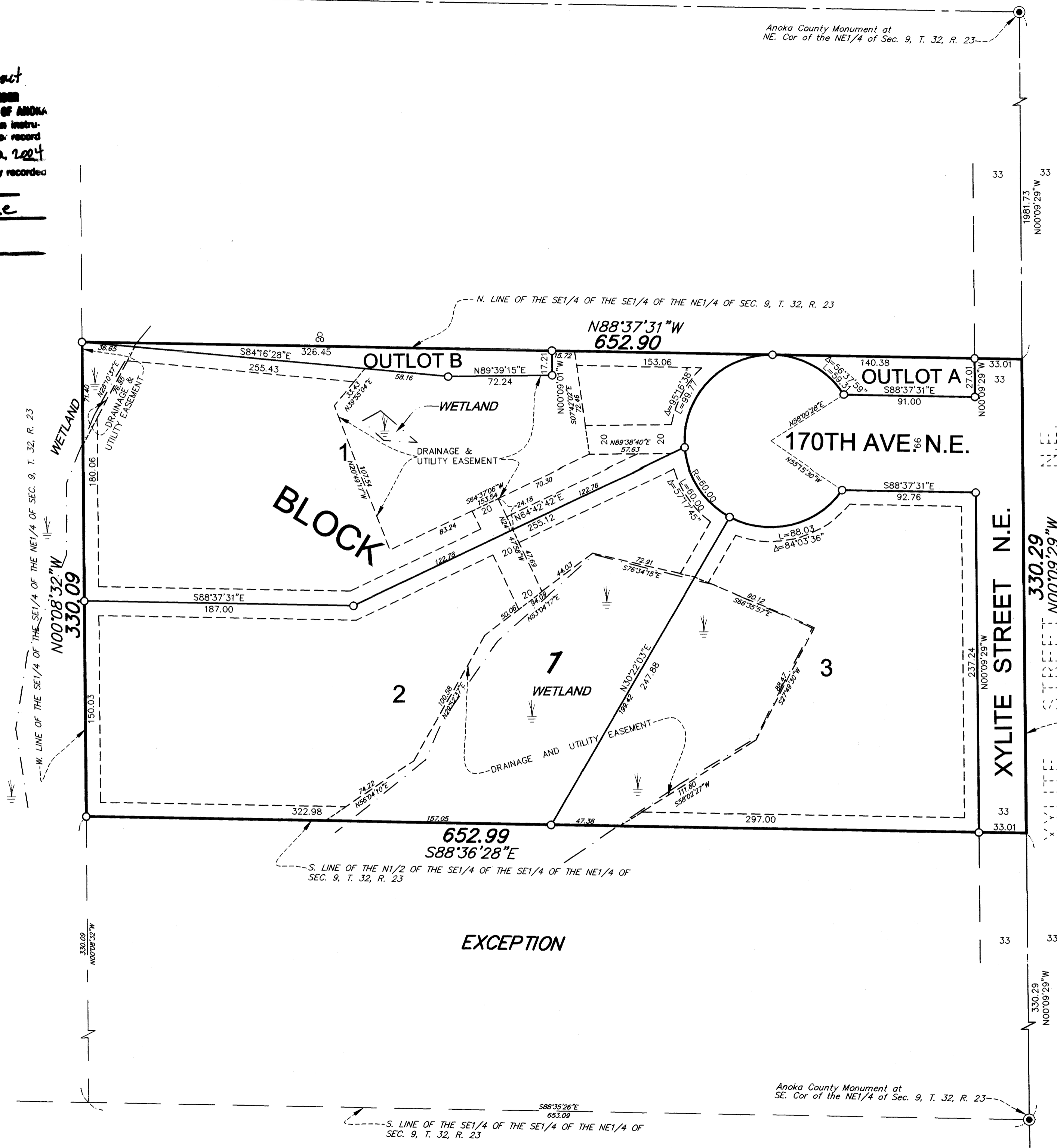
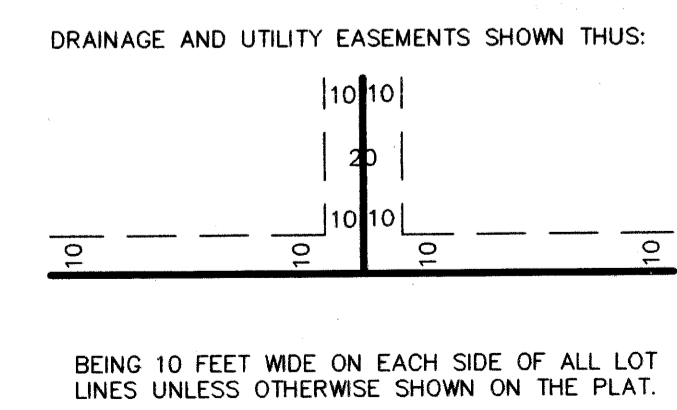
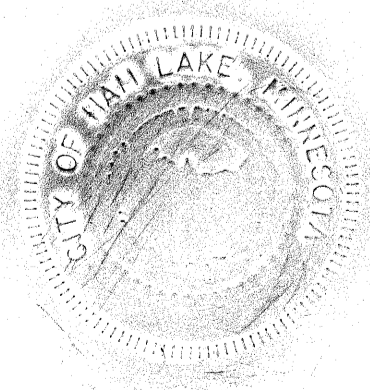
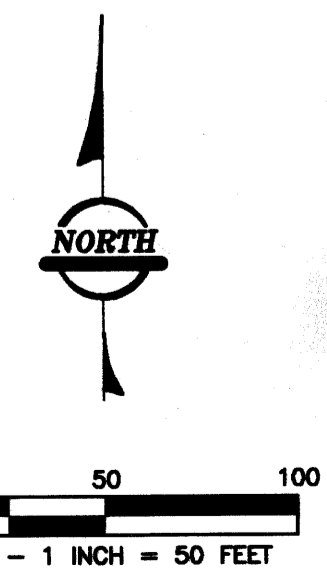
We hereby certify that the City Council of the City of Ham Lake, Anoka County, Minnesota, duly accepted and approved the plat of STOKES ADDITION at a regular meeting held this 21 day of June, 2004. If applicable, the written comments and recommendations of the Commissioner of Transportation and the County Highway Engineer have been received by the city or the prescribed 30 day period has elapsed without receipt of such comments and recommendations, as provided by Minn. Statutes, Section 505.03, Subd. 2.

By Mayor By Louis A. Nyjala Clerk

Checked and approved this 26th day of OCTOBER, 2004.

By Jerry D. Egan
 Anoka County Surveyor

I HEREBY CERTIFY THAT THE CURRENT AND DELINQUENT TAXES ON THE LANDS DESCRIBED WITHIN ARE PAID AND THE TRANSFER IS ENTERED
 Oct. 28, 2004
 MAUREEN J. DEVINE
 PROPERTY ADMINISTRATOR
 BY J. Culver
 DEPUTY PROPERTY TAX ADMINISTRATOR



- DENOTES FOUND MONUMENT.
- ALL MONUMENTS REQUIRED BY MINNESOTA STATUTE, WHETHER SHOWN ON THIS PLAT OR NOT, WILL BE SET WITHIN ONE YEAR OF THE RECORDING DATE OF THIS PLAT, AND SHALL BE EVIDENCED BY A 1/2" INCH BY 14 INCH IRON PIPE MARKED BY RLS 12251.
- ⊙ DENOTES ANOKA COUNTY MONUMENT.

For the purposes of this plat, the east line of the Southeast Quarter of the Northeast Quarter of Section 9, Township 32, Range 23, Anoka County, Minnesota, is assumed to bear N00°09'29"W.

receipt # 2004134089 \$55.00



AUDITOR'S SUBDIVISION NO. 62