

STONE GROUP COMMERCIAL

KNOW ALL PERSONS BY THESE PRESENTS: That Stone Group, LLC, a Minnesota limited liability company, owner of the following described property:

The Northeast Quarter of the Southwest Quarter of Section 17, Township 33, Range 23, Anoka County, Minnesota.

Has caused the same to be surveyed and platted as STONE GROUP COMMERCIAL and does hereby dedicate to the public for public use the public ways and the drainage and utility easements as shown on this plat.

In witness whereof said Stone Group, LLC, a Minnesota limited liability company, has caused these presents to be signed by its proper officer this 18 day of NOVEMBER, 2020

STONE GROUP, LLC

By: Bruce Montgomery
Bruce Montgomery, Vice President

State of Minnesota
County of Isanti

This instrument was acknowledged before me on November 12, 2020 by Bruce Montgomery as Vice President of Stone Group, LLC, a Minnesota limited liability company.

By: Joanne Boden
Joanne Boden (Print Name)

Notary Public, Isanti County, Minnesota
My commission expires January 31, 2025

I Kyle J. Roddy do hereby certify that this plat was prepared by me or under my direct supervision; that I am a duly Licensed Land Surveyor in the State of Minnesota; that this plat is a correct representation of the boundary survey; that all mathematical data and labels are correctly designated on this plat; that all monuments depicted on this plat have been, or will be correctly set within one year; that all water boundaries and wet lands, as defined in Minnesota Statutes, Section 505.01, Subd. 3, as of the date of this certificate are shown and labeled on this plat; and all public ways are shown and labeled on this plat.

Dated this 29th day of October, 2020

By: Kyle J. Roddy
Kyle J. Roddy, Licensed Land Surveyor
Minnesota License Number 42627

State of Minnesota
County of Isanti

This instrument was acknowledged before me on October 29, 2020 by Kyle J. Roddy.

By: Ernest C. Overby
Ernest C. Overby (Print Name)
Notary Public, Isanti County, Minnesota
My commission expires ISANTI

CITY COUNCIL, CITY OF EAST BETHEL, MINNESOTA

This plat of STONE GROUP COMMERCIAL was approved and accepted by the City Council of the City of East Bethel, Minnesota at a regular meeting thereof held this 14th day of September, 2020 and said plat is in compliance with the provisions of Minnesota Statutes, Section 505.03, Subd. 2.

By: Jack Davis Mayor By: Jack Davis City Clerk

ANOKA COUNTY SURVEYOR

I hereby certify that in accordance with Minnesota Statutes, Section 505.021, Subd. 11, this plat has been reviewed and approved this 17th day of November, 2020

By: Charles F. Gitzen
Charles F. Gitzen, Anoka County Surveyor

COUNTY AUDITOR/TREASURER

Pursuant to Minnesota Statutes, Section 505.021, Subd. 9, taxes payable in the year 2020 on the land hereinbefore described have been paid. Also, pursuant to Minnesota Statutes, Section 272.12, there are no delinquent taxes and transfer entered this 17 day of November, 2020

By: Pamela J. LeBlanc
Pamela J. LeBlanc, Property Tax Administrator

By: Deputy Deputy

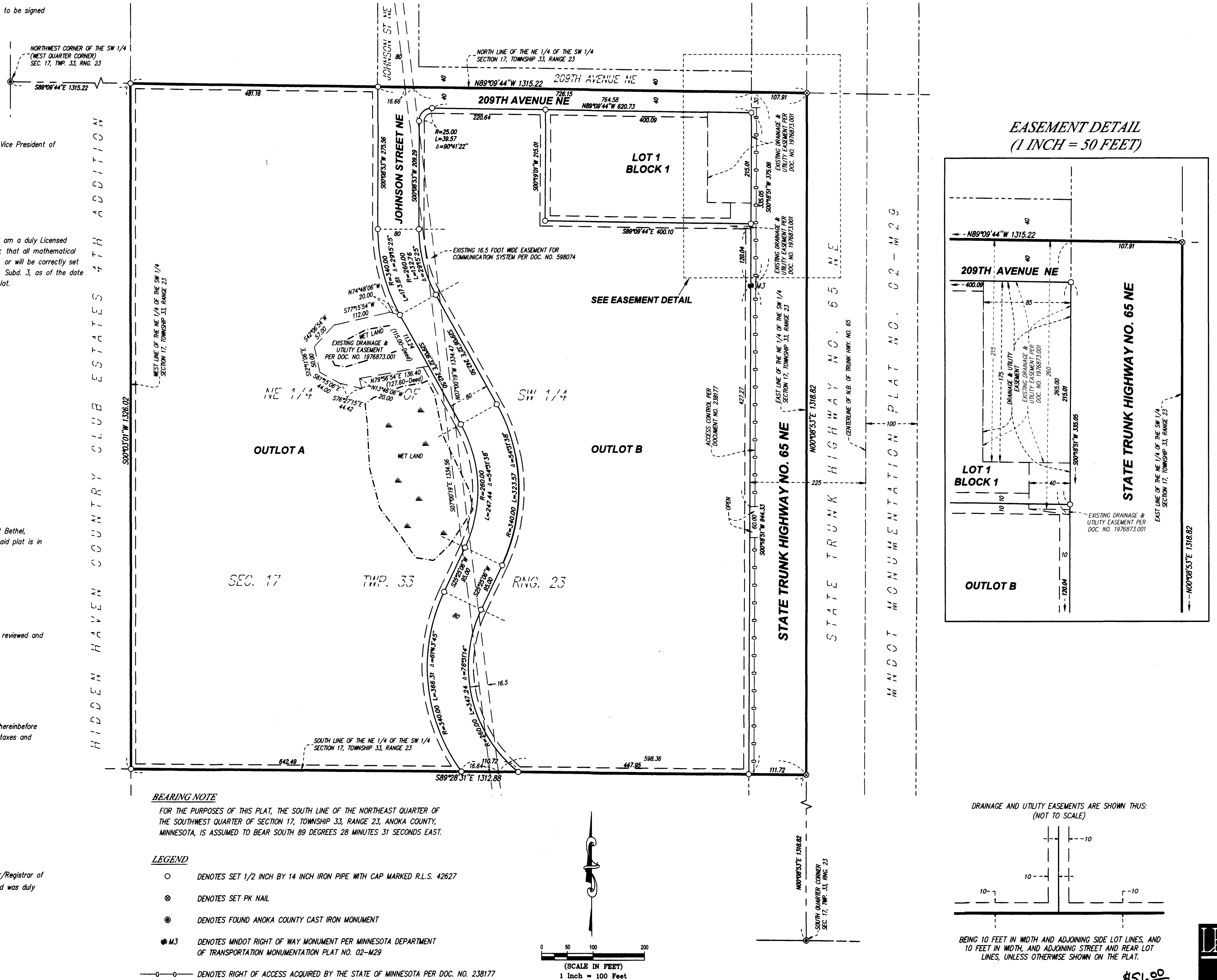
COUNTY RECORDER/REGISTRAR OF TITLES

County of Anoka, State of Minnesota

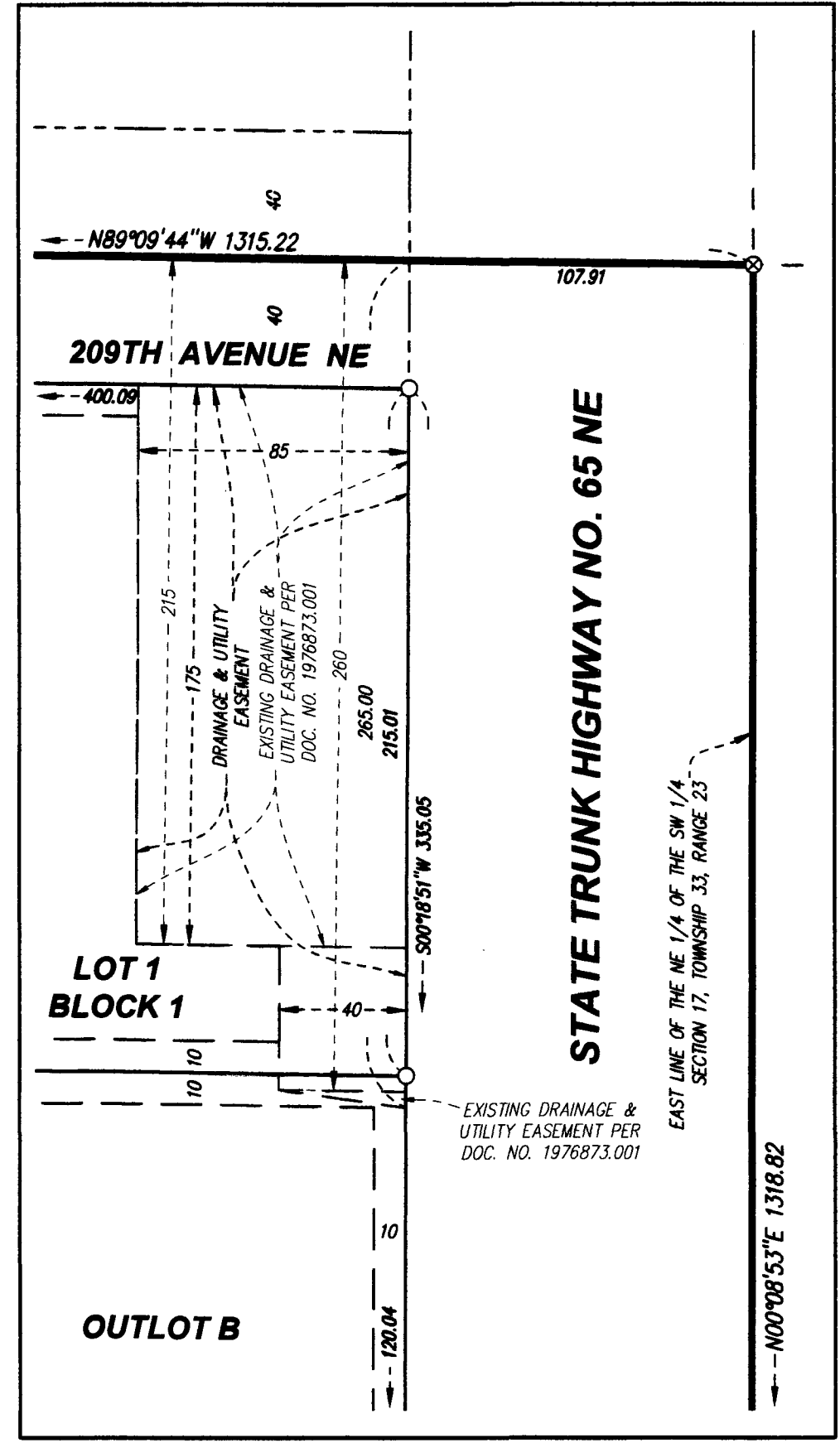
I hereby certify that this plat of STONE GROUP COMMERCIAL was filed in the office of the County Recorder/Registrar of Titles for public record on this 17 day of November, 2020 at 1:15 o'clock P.M. and was duly recorded as Document Number 2258700.001

By: Pamela J. LeBlanc
Pamela J. LeBlanc, County Recorder/Registrar of Titles

By: Deputy Deputy



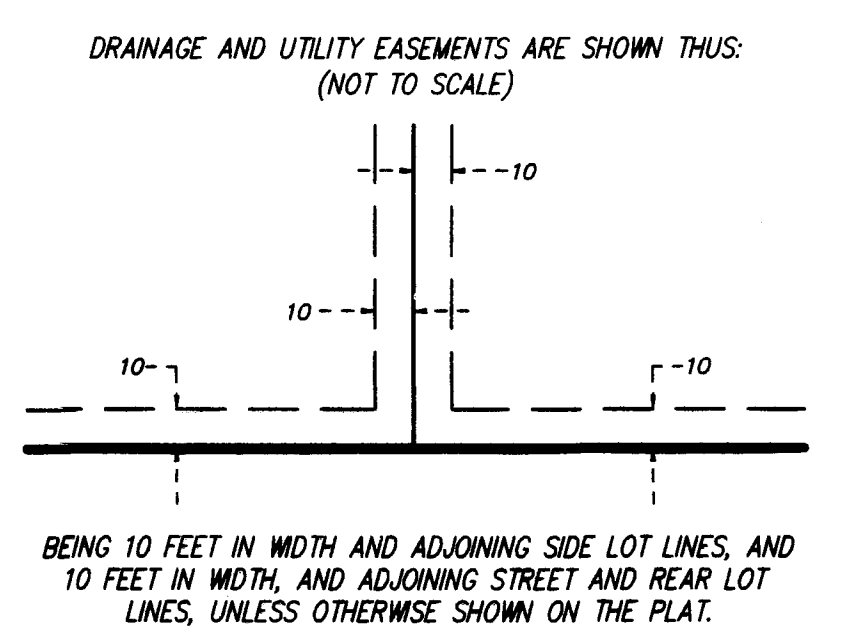
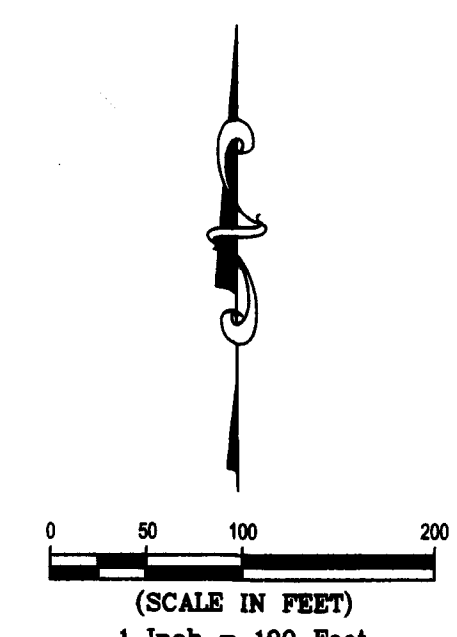
EASEMENT DETAIL
(1 INCH = 50 FEET)



BEARING NOTE
FOR THE PURPOSES OF THIS PLAT, THE SOUTH LINE OF THE NORTHEAST QUARTER OF THE SOUTHWEST QUARTER OF SECTION 17, TOWNSHIP 33, RANGE 23, ANOKA COUNTY, MINNESOTA, IS ASSUMED TO BEAR SOUTH 89 DEGREES 28 MINUTES 31 SECONDS EAST.

LEGEND

- DENOTES SET 1/2 INCH BY 14 INCH IRON PIPE WITH CAP MARKED R.L.S. 42627
- ⊙ DENOTES SET PK NAIL
- DENOTES FOUND ANOKA COUNTY CAST IRON MONUMENT
- M3 DENOTES MNDOT RIGHT OF WAY MONUMENT PER MINNESOTA DEPARTMENT OF TRANSPORTATION MONUMENTATION PLAT NO. 02-M29
- DENOTES RIGHT OF ACCESS ACQUIRED BY THE STATE OF MINNESOTA PER DOC. NO. 238177



\$56.00

