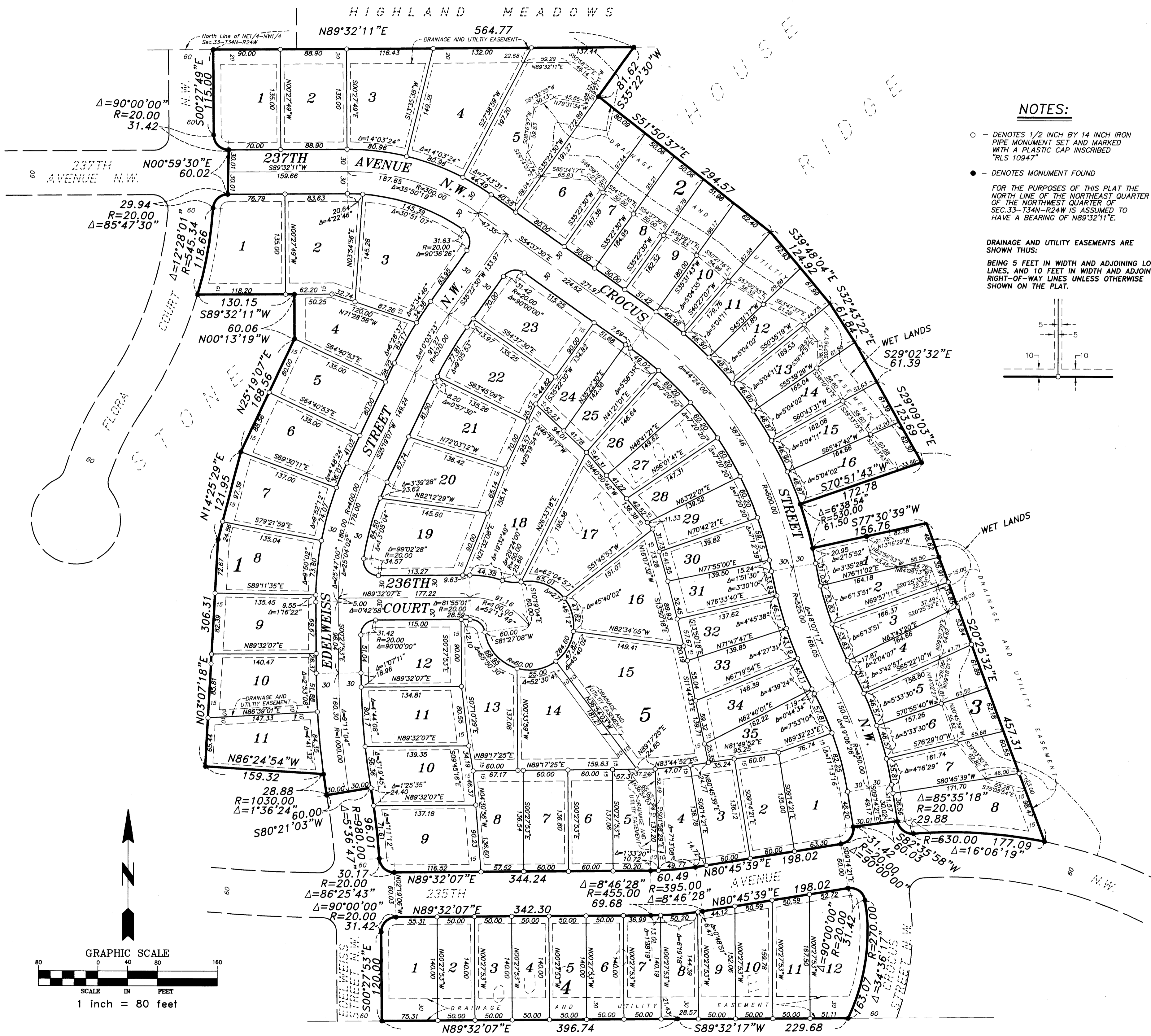


STONE HOUSE RIDGE SECOND ADDITION

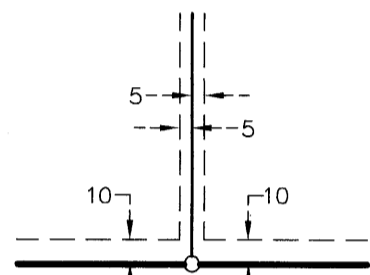


NOTES:

- - DENOTES 1/2 INCH BY 14 INCH IRON PIPE MONUMENT SET AND MARKED WITH A PLASTIC CAP INSCRIBED "RLS 10947"
- - DENOTES MONUMENT FOUND

FOR THE PURPOSES OF THIS PLAT THE NORTH LINE OF THE NORTHEAST QUARTER OF THE NORTHWEST QUARTER OF SEC.33-T34N-R24W IS ASSUMED TO HAVE A BEARING OF N89°32'11"E.

DRAINAGE AND UTILITY EASEMENTS ARE SHOWN THUS:
BEING 5 FEET IN WIDTH AND ADJOINING LOT LINES, AND 10 FEET IN WIDTH AND ADJOINING RIGHT-OF-WAY LINES UNLESS OTHERWISE SHOWN ON THE PLAT.



1901662
OFFICE OF COUNTY RECORDER
STATE OF MINNESOTA, COUNTY OF ANOKA
I hereby certify that the within instrument was filed in this office for record on the 20 MAY A.D., 2003
9:00 o'clock A.M. and was duly recorded in book _____ page _____
MAUREE J. DEVINE
County Recorder
By **KHJ**
Deputy

I HEREBY CERTIFY THAT THE CURRENT AND DELINQUENT TAXES ON THE LANDS DESCRIBED WITHIN ARE PAID AND THE TAX DEBTS IS ENTERED May 20 2003
PAUREN J. VINE
PROPERTY TAX ADMINISTRATOR
J. Culver
DEPUTY PROPERTY TAX ADMINISTRATOR

KNOW ALL PERSONS BY THESE PRESENTS: That Rolling Green Inc., a Minnesota Corporation, owner and proprietor of the following described property situated in the County of Anoka, State of Minnesota to wit:

Outlots E and F, STONE HOUSE RIDGE, according to the recorded plat thereof, Anoka County, Minnesota.

Has caused the same to be surveyed and platted as STONE HOUSE RIDGE SECOND ADDITION, and does hereby donate and dedicate to the public for public use forever the avenue, court, streets and easements for drainage and utility purposes.

In witness whereof said Rolling Green, Inc., a Minnesota Corporation, has caused these presents to be signed by its proper officer this 20 day of JANUARY, 2003.

ROLLING GREEN, INC.
David J. Dalbec
David J. Dalbec, President

STATE OF MINNESOTA
COUNTY OF HENNEPIN
The foregoing instrument was acknowledged before me this 20 day of JANUARY, 2003, by David J. Dalbec, as President, of Rolling Green, Inc., a Minnesota Corporation, on behalf of the Corporation.

ARNOLD J. ESTERBROOKS
NOTARY PUBLIC, MINNESOTA
My Commission Expires Jan. 31, 2005

Heinlein
Notary Public, HENNEPIN County, Minnesota
My commission expires JANUARY 31, 2005

I, Rodney H. Halvorson hereby certify that I have surveyed and platted the property described on this plat as STONE HOUSE RIDGE SECOND ADDITION; that this plat is a correct representation of the survey; that all distances are correctly shown on the plat in feet and hundredths of a foot; that all monuments will be correctly placed in the ground as shown within one year after the recording date of this plat; that the outside boundary lines are correctly designated on the plat and that there are no wetlands as defined in MS 505.02, Subd. 1 or public highways to be designated on said plat other than as shown.

Rodney H. Halvorson
Rodney H. Halvorson, Land Surveyor
Minnesota License No. 10947

STATE OF MINNESOTA
COUNTY OF ANOKA
The foregoing instrument was acknowledged before me this 2ND day of DECEMBER, 2002, by Rodney H. Halvorson, Land Surveyor.

BLAKE L. RIVARD
NOTARY PUBLIC - MINNESOTA
My Commission Expires Jan. 31, 2005

Blakel R. Rivard
Notary Public, ANOKA County, Minnesota
My commission expires 1-31-2005

The foregoing plat of STONE HOUSE RIDGE SECOND ADDITION was approved and accepted by the City Council of St. Francis, Minnesota at a regular meeting thereof held this 1ST day of OCTOBER, 2002. If applicable, the written comments and recommendations of the Commissioner of Transportation and County Highway Engineer have been received by the City or the prescribed 30 day period has elapsed without receipt of such comments and recommendations, as provided by Minnesota Statutes, Section 505.03, Subd. 2.

CITY COUNCIL OF ST. FRANCIS, MINNESOTA
By **Raymond E. Steteb** Mayor
By **Barbara K. Held** Clerk

Checked and approved this 20TH day of May, 2003
Lynn D. Hainley
Anoka County Surveyor

MIDWEST
Land Surveyors & Civil Engineers, Inc.

RECEIPT # 2003064421 / \$ 66.00