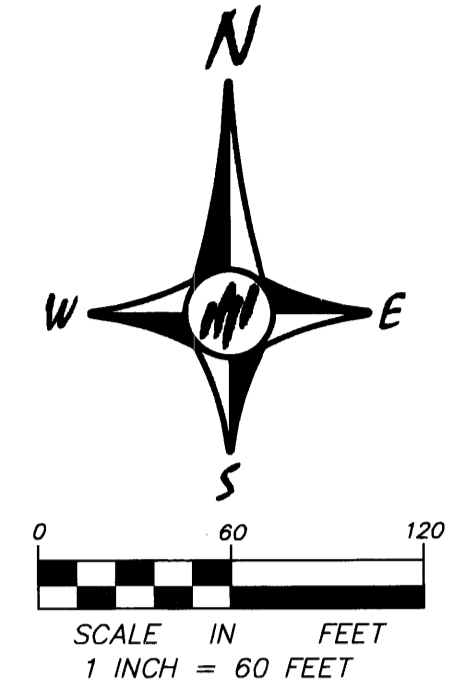
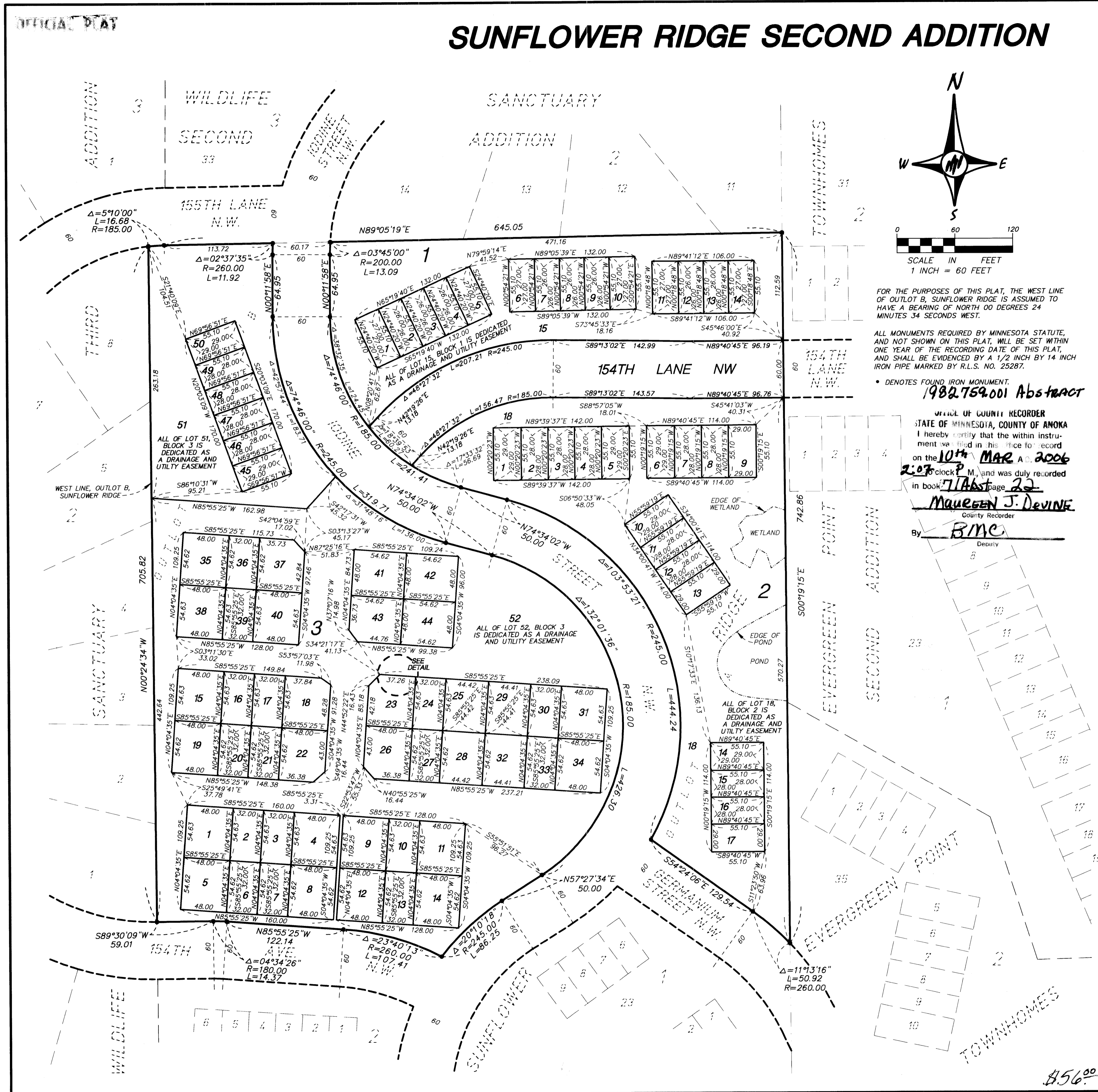


# SUNFLOWER RIDGE SECOND ADDITION



FOR THE PURPOSES OF THIS PLAT, THE WEST LINE OF OUTLOT B, SUNFLOWER RIDGE IS ASSUMED TO HAVE A BEARING OF NORTH 00 DEGREES 24 MINUTES 34 SECONDS WEST.

ALL MONUMENTS REQUIRED BY MINNESOTA STATUTE, AND NOT SHOWN ON THIS PLAT, WILL BE SET WITHIN ONE YEAR OF THE RECORDING DATE OF THIS PLAT, AND SHALL BE EVIDENCED BY A 1/2 INCH BY 14 INCH IRON PIPE MARKED BY R.L.S. NO. 25287.

• DENOTES FOUND IRON MONUMENT.

**1982.759.001 Abstract**

OFFICE OF COUNTY RECORDER  
 STATE OF MINNESOTA, COUNTY OF ANOKA  
 I hereby certify that the within instrument was filed in his office to record on the 10th MAR A 2006 at 2:07 clock P.M., and was duly recorded in book 71 Abstract page 22  
**MAUREEN J. DEVINE**  
 County Recorder  
 By BMC  
 Deputy

KNOW ALL PERSONS BY THESE PRESENTS: That U.S. Home Corporation, a Delaware corporation, owner of the following described property situated in the County of Anoka, State of Minnesota, to wit:

Outlots A and B, SUNFLOWER RIDGE, according to the recorded plat thereof, Anoka County, Minnesota.

Has caused the same to be surveyed, platted and known as SUNFLOWER RIDGE SECOND ADDITION and does hereby donate and dedicate to the public for public use forever the lane and also dedicate the drainage and utility easements as shown on the plat.

In witness whereof said U.S. Home Corporation, a Delaware corporation, has caused these presents to be signed by its proper officer this 23rd day of February 2006.

U.S. HOME CORPORATION  
 By [Signature] its Exec V.P.

State of Minnesota  
 County of Hennepin  
 The foregoing instrument was acknowledged before me this 23rd day of February 2006 by Mark Anderson, as Exec Vice President of U.S. Home Corporation, a Delaware corporation, on behalf of the corporation.

Sara Jensen  
 Notary Public, Hennepin County, Minnesota  
 My commission expires Jan 31, 2010



I, Mark F. Maistrovich, hereby certify that I have surveyed and platted the property described on this plat as SUNFLOWER RIDGE SECOND ADDITION; that this plat is a correct representation of the survey; that all distances are correctly shown on the plat in feet and hundredths of a foot; that all monuments have been correctly placed in the ground as shown or will be correctly placed in the ground as designated; that the outside boundary lines are correctly designated on the plat; and that there are no wet lands as defined in MS 505.02, Subd. 1, or public highways to be designated other than as shown.

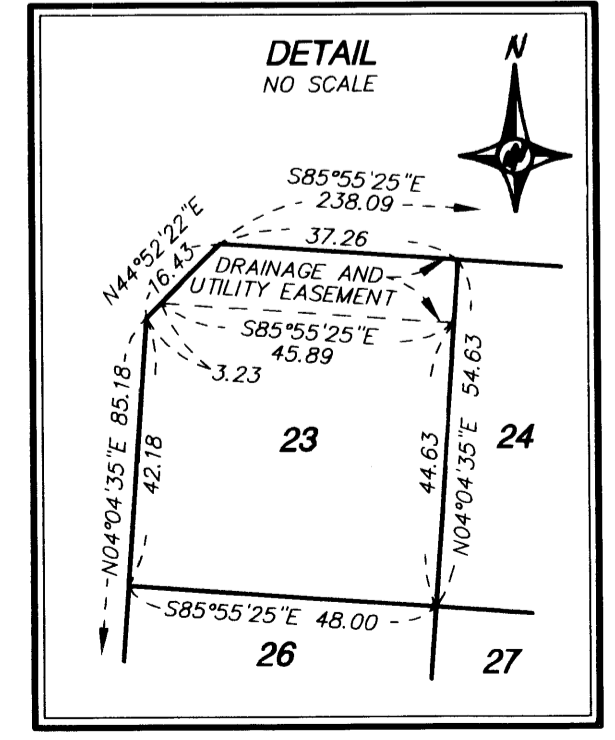
[Signature]  
 Mark F. Maistrovich, Land Surveyor  
 Minnesota License Number 25287

State of Minnesota  
 County of Anoka  
 The foregoing Surveyors Certificate was acknowledged before me this 23rd day of Feb 2006 by Mark F. Maistrovich, Minnesota License No. 25287  
[Signature]  
 Notary Public, Anoka County, Minnesota  
 My commission expires Jan 31, 2010

RAMSEY, MINNESOTA  
 This plat of SUNFLOWER RIDGE SECOND ADDITION was approved and accepted by the City Council of the City of Ramsey, Minnesota, at a regular meeting thereof held this 13th day of September, 2005. If applicable, the written comments and recommendations of the Commissioner of Transportation and County Highway Engineer have been received by the City or the prescribed period has elapsed without receipt of such comments and recommendations as provided by Minnesota Statutes, Section 505.03, Subdivision 2.

CITY COUNCIL OF THE CITY OF RAMSEY, MINNESOTA  
[Signature] Mayor [Signature] Clerk

ANOKA COUNTY SURVEYOR  
 This plat was checked and approved on this 10th day of March, 2006  
 By Larry O. Hoium by Charles F. Setzer, Deputy  
 Larry O. Hoium, Anoka County Surveyor



I HEREBY CERTIFY THAT THE CURRENT AND DELINQUENT TAXES ON THE LANDS DESCRIBED WITHIN ARE PAID AND THE TRANSFER IS ENTERED March 10, 2006  
**MAUREEN J. DEVINE**  
 PROPERTY TAX ADMINISTRATOR  
 By [Signature]  
 DEPUTY PROPERTY TAX ADMINISTRATOR

\$56.00