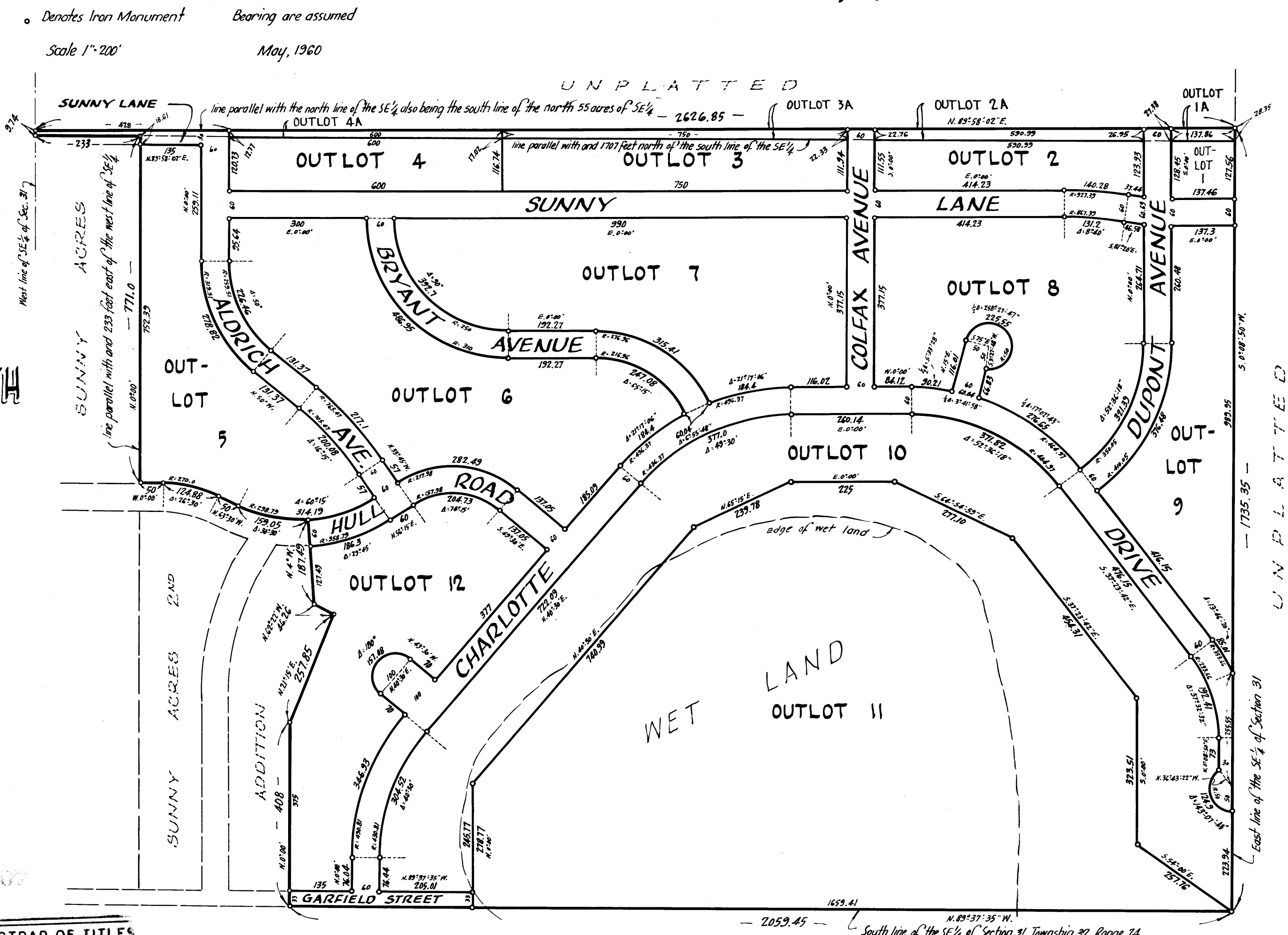


Sunny Acres 3rd Addition

City of Anoka - County of Anoka

Suburban Engineering Inc.
Engineers and Surveyors



KNOW ALL MEN BY THESE PRESENTS: that Walter H. Hull and Charlotte S. Hull, his wife, owners and proprietors of the following described property situate in the State of Minnesota, and County of Anoka to-wit: That part of the Southeast 1/4 of Section 31, Township 32, Range 24, Anoka County, Minnesota, lying south of the North 55 acres thereof (said North 55 acres being parallel to the North line of said Southeast 1/4); excepting therefrom that part of said Southeast 1/4 lying south of a line drawn parallel to and distant 1707 feet north of the South line of said Southeast 1/4; and also that part of the Southeast 1/4 of Section 31, Township 32, Range 24, Anoka County, Minnesota, lying south of a line drawn parallel to and distant 1707 feet north of the south line of said Southeast 1/4 excepting therefrom that part of Sunny Acres lying west of a line which is 233 feet east of the West line of said Southeast 1/4, the foregoing exception includes Lots 1, 2, 3, 4, 5, 6 & 7, Block 1 and Lots 1, 2, 3, 4, 5, 6, 7 & 8, Block 2, Sunny Acres, excepting also that part embraced as Sunny Acres 2nd Addition; have caused the same to be surveyed and platted as SUNNY ACRES 3rd ADDITION, and do hereby donate and dedicate to the public for public use forever the Avenues, Street, Road, Lane and Drive as shown on the annexed plat.

In witness whereof said Walter H. Hull and Charlotte S. Hull, his wife, have hereunto set their hands and seals this 20th day of JUNE A.D. 1960.

In Presence of:
 Harold M. Kerner }
 E. A. Rathbun } As to Walter H. Hull and Charlotte S. Hull

Signed by:
 Walter H. Hull (Seal)
 Charlotte S. Hull (Seal)

State of Minnesota }
 County of Anoka } On this 20th day of JUNE A.D. 1960, before me, a Notary Public, within and for said County and State, personally appeared Walter H. Hull and Charlotte S. Hull, his wife to me known to be the persons described in and who executed the foregoing instrument and they acknowledged that they executed the same as their own free act and deed.

Harold M. Kerner
 Notary Public, Anoka County, Minnesota
 My Commission Expires MAY 24, 1967

This plat was approved and accepted by the City Commission of Anoka, Minnesota, at a regular meeting thereof held this 15 day of AUGUST A.D. 1960.

OFFICE OF REGISTER OF DEEDS
 STATE OF MINNESOTA, COUNTY OF ANOKA
 I hereby certify that the within instrument was filed for record on this 21 day of AUGUST A.D. 1960, at 4 o'clock P.M. and was duly recorded in the 13 of Plate 21.

By Margaret Russell
 Register of Deeds

Thereby certified with and paid 175.2 on the 21 day of AUGUST YEAR 1960.

Walter H. Hull
 County Treasurer

Exempt from state deed tax

TAXES PAID
2.11 Aug 1960
Samuel D. Campbell
 Anoka County, Minn.
Carl T. Salomon Deputy

Office of REGISTRAR OF TITLES
 STATE OF MINNESOTA
 COUNTY OF ANOKA
 I hereby certify that the within instrument was filed in this office on the 20 day of AUGUST A.D. 1960, at 4 o'clock P.M. by Charles Skjerve Registrar of Titles and Edna Boettcher DEPUTY REGISTRAR OF TITLES

I hereby certify that I have surveyed and platted the property described on this plat as SUNNY ACRES 3rd ADDITION, that this plat is a correct representation of said survey; that all distances are correctly shown on the plat in feet and decimals of a foot; that the monuments for guidance of future surveys have been correctly placed in the ground as shown on the plat; that the outside boundary lines are correctly designated on the plat, and that there are no wet lands or public highways to be designated on said plat other than as shown thereon.

E. A. Rathbun
 Surveyor - Minnesota Registration N° 3795

Supreme Mickawic
 Notary Public, Anoka County, Minnesota
 My Commission Expires DEC 26, 1964

State of Minnesota }
 County of Anoka } Above certificate subscribed and sworn to before me, a Notary Public, this 13th day of JUNE A.D. 1960.

Checked and approved this 7th day of JULY A.D. 1960. Poland W. Anderson
 Anoka County Surveyor