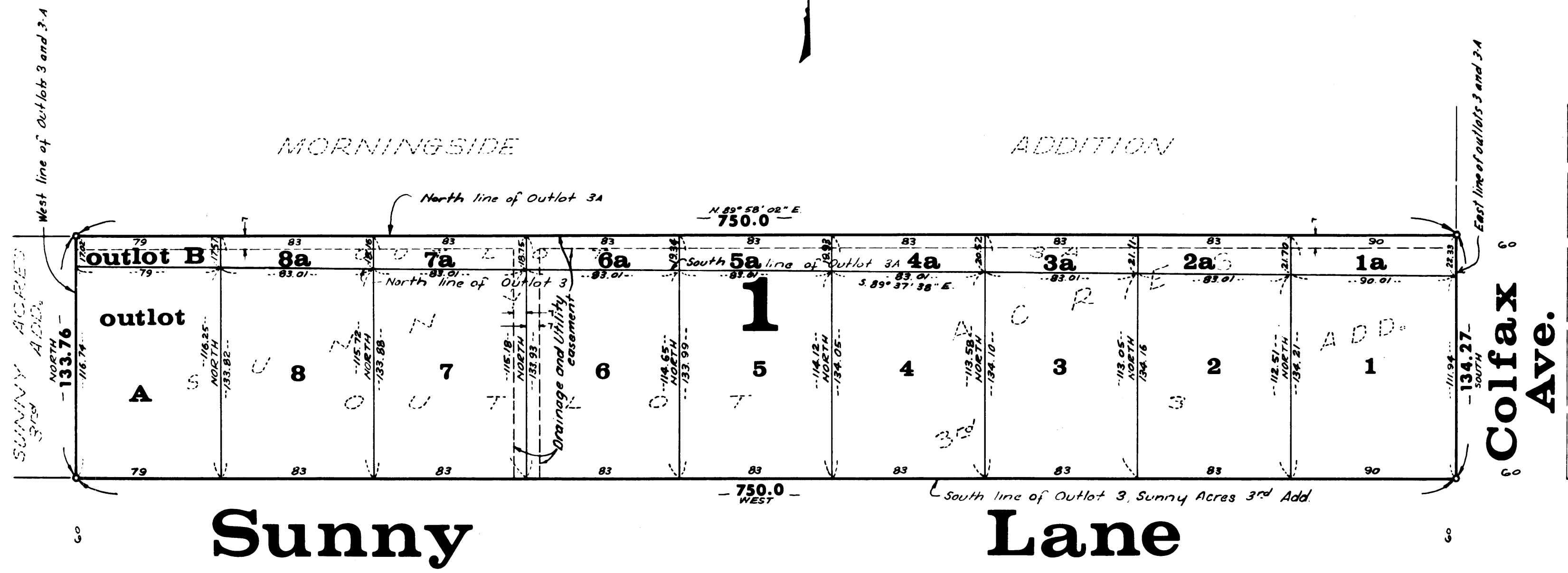
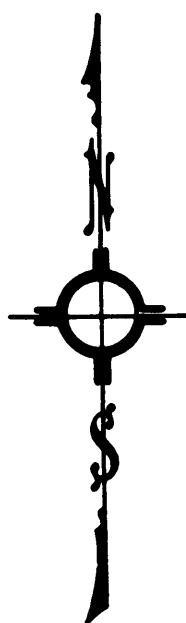


SUNNY ACRES 6th ADDITION

- CITY of ANOKA - - COUNTY of ANOKA -



Sunny Lane

Colfax Ave.

SCALE 1 INCH = 50 FEET
O DENOTES IRON MONUMENT
BEARINGS SHOWN ARE ASSUMED
JULY, 1967

Suburban Engineering, Inc.
ENGINEERS & SURVEYORS

KNOW ALL MEN BY THESE PRESENTS: that Village Builders Inc., a Minnesota Corporation, owner and proprietor of the following described property situate in the State of Minnesota and County of Anoka, to-wit: Outlot 3 and Outlot 3A Sunny Acres 3rd Addition; has caused the same to be surveyed and platted as SUNNY ACRES 6th ADDITION; subject to the Utility and Drainage Easement as shown on the annexed plat. In witness whereof Village Builders Inc. has caused these presents to be signed by its proper officers and its corporate seal to be hereunto affixed this 16th day of August A.D. 1967.

In Presence of
Judith L. Miller As to Edwin E. Kauffmann and Richard C. Kauffmann
Madonna Treitel As to Edwin E. Kauffmann and Richard C. Kauffmann
VILLAGE BUILDERS INC.
Edwin E. Kauffmann President
Richard C. Kauffmann Vice President

State of Minnesota On this 16th day of August A.D. 1967, before me, a Notary Public, within and for said County and State, personally appeared Edwin E. Kauffmann and Richard C. Kauffmann, to me personally known, who being by me duly sworn, did say that they are the President and Vice President respectively of Village Builders Inc., the corporation named in the foregoing instrument; that the seal affixed to said instrument is the corporate seal of said corporation; and that said instrument was signed and sealed in behalf of said corporation by authority of its Board of Directors, and said Edwin E. Kauffmann and Richard C. Kauffmann acknowledged said instrument to be the free act and deed of said corporation.

Madonna Treitel
Notary Public, Hennepin County, Minnesota
Notary Public, Hennepin County, Minn.
My Commission Expires July 26, 1968

I hereby certify that I have surveyed and platted the property described on this plat as SUNNY ACRES 6th ADDITION; that this plat is a correct representation of said survey; that all distances are correctly shown on the plat in feet and decimals of a foot; that all monuments have been correctly placed in the ground as shown on said plat; that the outside boundary lines are correctly designated on said plat, and that there are no wet lands or public highways to be designated on said plat other than as shown thereon.

E. A. Rathbun
Surveyor - Minnesota Registration No. 3795

State of Minnesota The surveyors certificate subscribed and sworn to before me, a Notary Public, this 14th day of August A.D. 1967.

Warren O. Olson
Notary Public, Hennepin County, Minnesota
WARREN O. OLSON
Notary Public, Hennepin County, Minn.
My Commission Expires July 12, 1974

We hereby certify that the City Council of the City of Anoka, Anoka County, Minnesota, duly accepted and approved the annexed plat of SUNNY ACRES 6th ADDITION at a regular meeting thereof held this 5th day of September A.D. 1967.

CITY OF ANOKA, ANOKA COUNTY, MINNESOTA
By Donald K. Elvig Mayor
By Earl R. Foley Clerk

Checked and approved this 10th day of October A.D. 1967.

Roland W. Anderson
Anoka County Surveyor

Approved by the Planning Commission of the City of Anoka, Minnesota, this 14th day of August A.D. 1967.

Signed Wm. W. Wenzel Chairman
Attest Mont Watson Secretary

59247
Office of REGISTRAR OF TITLE
STATE OF MINNESOTA
COUNTY OF ANOKA
I hereby certify that the within instrument was filed in this office on the 16th day of August, A.D. 1967, at 12 o'clock P. and was duly recorded in book 2 of Plats page 4.
By Eileen Boettcher
REGISTRAR OF TITLE

302460
OFFICE OF REGISTER OF DEEDS
STATE OF MINNESOTA, COUNTY OF ANOKA } ss
I hereby certify that the within instrument was filed in this office for record on the 16th day of August, A.D. 1967, at 12 o'clock P. and was duly recorded in book 2 of Plats page 4.
By Margaret K. Kuyper
Register of Deeds

TAXES PAID
This 16th day of Oct 1967
Kenneth W. Campbell
Auditor, Anoka County, Minn.
Raymond A. Johnson Deputy

I HEREBY CERTIFY THAT THE TAXES PAYABLE ON THE YEAR 1967 ON THE LANDS RECORDED IN THIS PLAT
Robert A. Peterson
SOLE CLERK, REGISTER