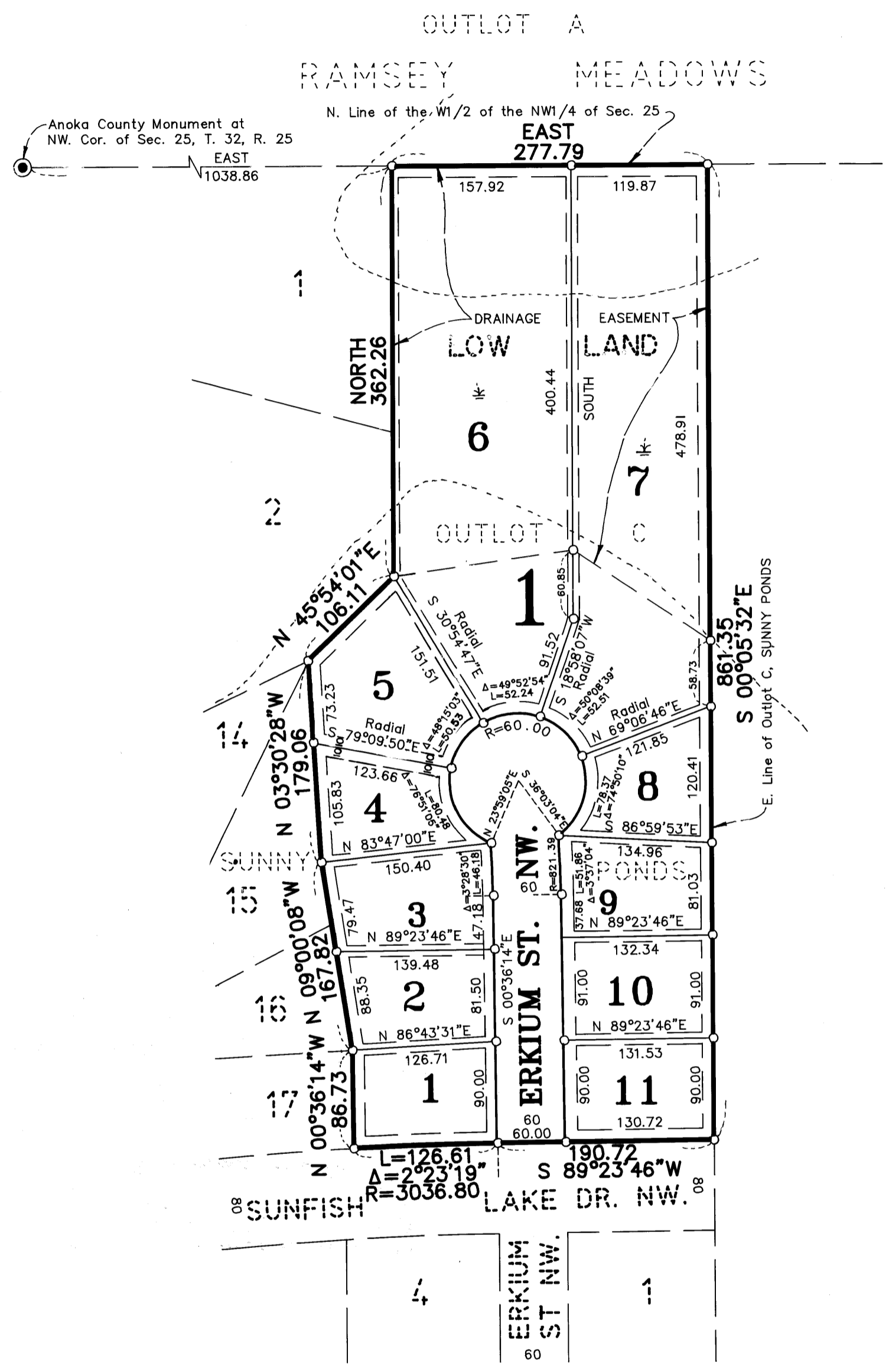


SUNNY PONDS 2ND ADDITION

CITY OF RAMSEY COUNTY OF ANOKA



KNOW ALL PERSONS BY THESE PRESENTS: That North Suburban Development, Inc., a Minnesota Corporation, owner and proprietor, and Doloras S. Fleischer, mortgagee of the following described property situated in the County of Anoka, State of Minnesota, to-wit:

Outlot C, SUNNY PONDS, according to the recorded plat thereof, Anoka County, Minnesota.

Have caused the same to be surveyed and platted as SUNNY PONDS 2ND ADDITION and do hereby donate and dedicate to the public for public use forever the street as shown on the plat. Also dedicating the drainage and/or utility easements as shown on the plat. In witness whereof said North Suburban Development, Inc. has caused these presents to be signed by its proper officer this 28th day of April, 1993. In witness whereof said Doloras S. Fleischer has hereunto set her hand this 28th day of April, 1993.

NORTH SUBURBAN DEVELOPMENT, INC.

J. A. Menkveld
J. A. Menkveld, as President

SIGNED:
Doloras S. Fleischer
Doloras S. Fleischer

STATE OF MINNESOTA) The foregoing instrument was acknowledged before me this 28th day of April, 1993, by J. A. COUNTY OF Anoka) Menkveld, President of North Suburban Development, Inc., a Minnesota Corporation, on behalf of the corporation.

EILEEN R. DORSEY
NOTARY PUBLIC-MINNESOTA
ANOKA COUNTY
MY COMMISSION EXPIRES 03-26-96

Eileen R. Dorsey
Notary Public, Anoka County, Minnesota
My Commission expires 3-26-96

STATE OF MINNESOTA) The foregoing instrument was acknowledged before me this 28 day of April, 1993, by Doloras COUNTY OF Anoka) S. Fleischer, single.

EILEEN R. DORSEY
NOTARY PUBLIC-MINNESOTA
ANOKA COUNTY
MY COMMISSION EXPIRES 03-26-96

Eileen R. Dorsey
Notary Public, Anoka County, Minnesota
My Commission expires 3-26-96

I hereby certify that I have surveyed and platted the land described in the dedication on this plat as SUNNY PONDS 2ND ADDITION; that the plat is a correct representation of said survey; that all distances are correctly shown on said plat in feet and hundredths of a foot; that the monuments have been correctly placed in the ground as shown; that the outside boundaries are correctly designated on said plat; and that there are no wet lands or public highways to be designated on said plat other than as shown thereon.

Jeffrey N. Caine
Jeffrey N. Caine, Registered Land Surveyor
Minnesota Registration No. 12251

STATE OF MINNESOTA) The surveyors certificate was acknowledged before me a Notary Public, this 22nd day of April, 1993. COUNTY OF ANOKA) by Jeffrey N. Caine, Land Surveyor.

Molly W. Caine
Notary Public, Anoka County, Minnesota
My Commission expires 6-13-96

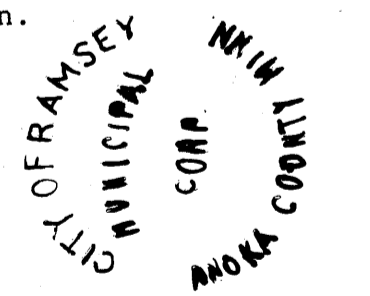
Molly W. Caine
Notary Public, Anoka County, Minnesota
My Commission expires 6-13-96

CITY OF RAMSEY
We hereby certify that the City Council of the City of Ramsey, Anoka County, Minnesota, duly accepted and approved the plat of SUNNY PONDS 2ND ADDITION at a regular meeting held this 13th day of April, 1993. If applicable, the written comments and recommendations of the Commissioner of Transportation and the County Highway Engineer have been received by the city or the prescribed 30 day period has elapsed without receipt of such comments and recommendations, as provided by Minn. Statutes, Section 500.03 Subd. 2.

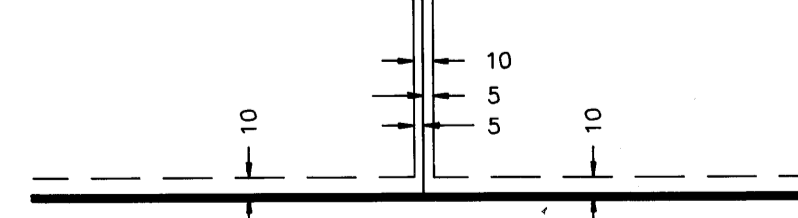
By *James R. Schaefer* Mayor By *Ryan R. Schaefer* Clerk

Checked and approved this 30th day of April, 1993.

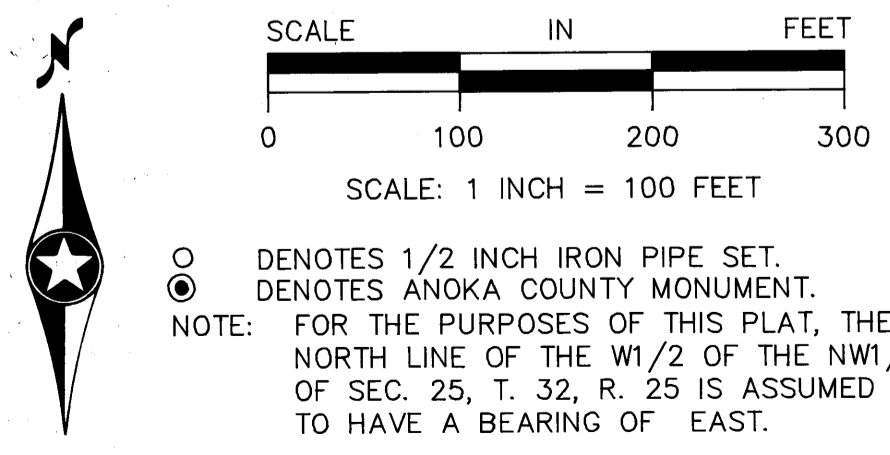
By *Walter D. Paul*
Anoka County Surveyor



DRAINAGE AND UTILITY EASEMENTS SHOWN, THUS:



BEING 10 FEET WIDE AND ADJOINING ALL STREET RIGHT-OF-WAY LINES AND REAR LOT LINES AND 5 FEET WIDE AND ADJOINING ALL SIDE LOT LINES, UNLESS OTHERWISE SHOWN ON THE PLAT.



1035938

OFFICE OF COUNTY RECORDER
STATE OF MINNESOTA, COUNTY OF ANOKA
I hereby certify that the within instrument was filed in this office for record on the APR 30 A.D., 1993 at 8:25 o'clock A.M., and was duly recorded in book 46 Page 26
Redmond
County Recorder
By *S. Culver*

HEREBY CERTIFY THAT THE CURRENT AND DELINQUENT TAXES ON THE LANDS DESCRIBED WITHIN ARE PAID AND THE TRANSFER IS ENTERED April 30 1993
PROPERTY TAX ADMINISTRATOR
BY *S. Culver*
DEPUTY PROPERTY TAX ADMINISTRATOR

CAINE & ASSOCIATES
LAND SURVEYORS, INC.