

SUNNY VIEW SECOND ADDITION

ANOKA COUNTY, MINNESOTA

CARDARELLE & ASSOCIATES, INC.

LAND SURVEYORS

AUGUST, 1964

Know all men by these presents: that Midwestern Finance Incorporated, a Minnesota corporation, owner and proprietor of the following described property situated in the County of Anoka, State of Minnesota:

Outlots 2 and 3 and the Westerly 66 feet of Outlet 4, Sunny View Addition, Anoka County, Minnesota.

Have caused the same to be surveyed and platted as SUNNY VIEW SECOND ADDITION and do hereby donate and dedicate to the public for public use forever the streets, lanes and avenue as shown on the annexed plat, also subject to the utility easements as shown on the annexed plat.

In witness whereof Midwestern Finance Incorporated has caused these presents to be signed by its proper officers and its corporate seal to be hereunto affixed, this 13th day of August A.D. 1964.

signed

In presence of

Midwestern Finance Incorporated

State of Minnesota
County of Hennepin S.S. On this 13th day of August A.D. 1964 before me, a Notary Public, within and for said County and State, did personally appear J. Segal and Sheldon Z. Wert, to me personally known, who each being duly sworn, did say that they are the President and the Secretary, respectively, of Midwestern Finance Incorporated, the corporation named in the foregoing instrument, and that said instrument was signed and sealed in behalf of said corporation by authority of its board of directors, and acknowledged said instrument to be the free act and deed of said corporation, and that the seal affixed to said instrument is the corporate seal of said corporation.

Tom Stodoljan

by *J. Segal*
J. Segal, President

Sheldon Z. Wert

by *Sheldon Z. Wert*
Sheldon Z. Wert, its Secy.

Saul Segal
Notary Public, Hennepin County, Minnesota
My commission expires *Saul Segal*
Notary Public, Hennepin County, Minn.
My Commission Expires Oct. 30, 1969.

I hereby certify that I have surveyed and platted the property described on this plat as SUNNY VIEW SECOND ADDITION; that this plat is a correct representation of said survey; that all distances are correctly shown on the plat in feet and decimals of a foot; that monuments for guidance of future surveys have been correctly placed in the ground as shown on the plat; that the outside boundary lines are correctly designated on the plat; that there are no wet lands or public highways to be designated on said plat other than as shown hereon.

Frank R. Cardarelle
Frank R. Cardarelle, Minn. State Reg. No. 6508

State of Minnesota
County of Hennepin S.S. Above certificate subscribed and sworn to before me this 13th day of August A.D. 1964.

Saul Segal
Notary Public, Hennepin County, Minnesota
My commission expires *Saul Segal*
Notary Public, Hennepin County, Minn.
My Commission Expires Oct. 30, 1969.

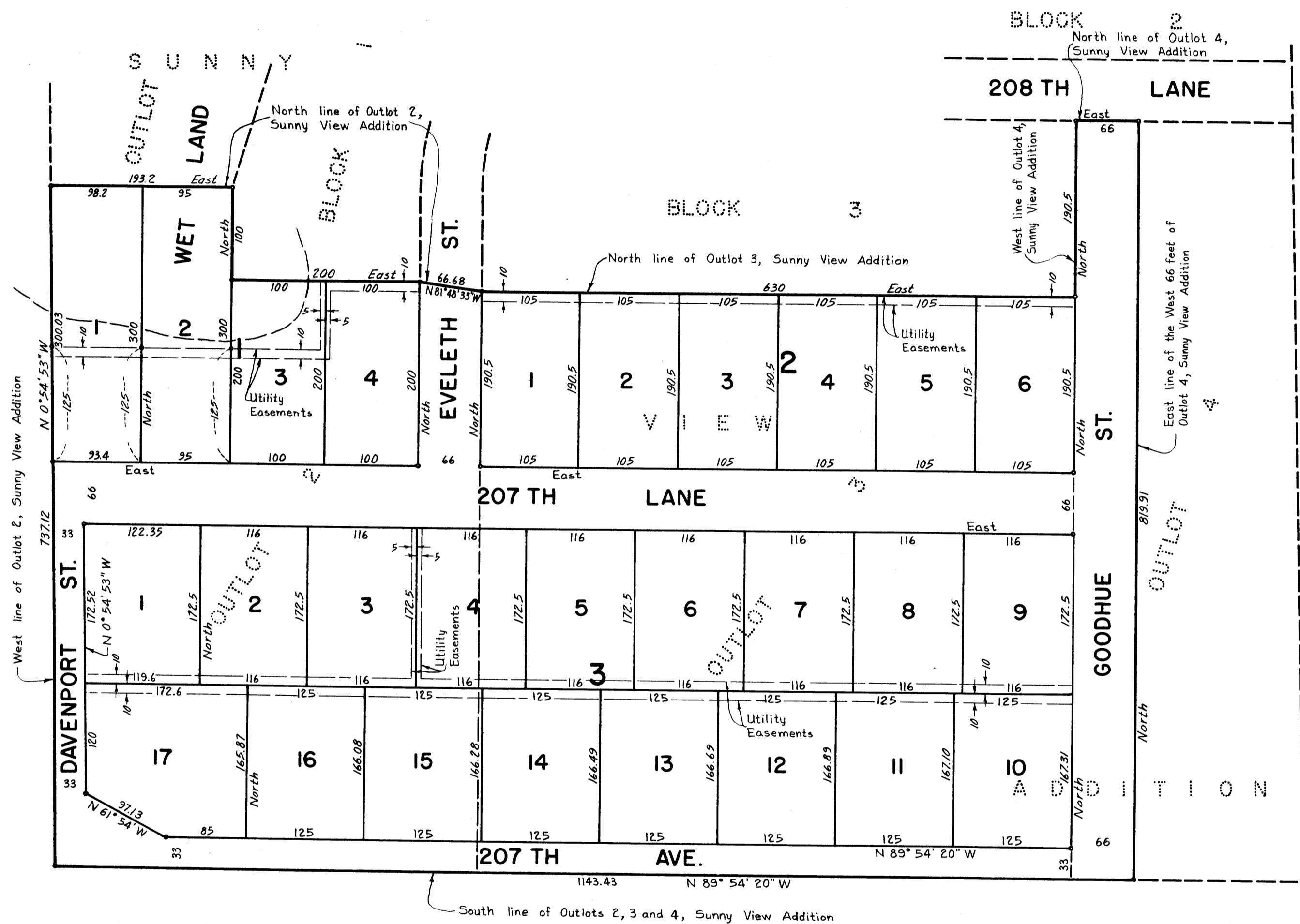
This plat has been checked and approved this 17th day of August A.D. 1964.

Roland W. Anderson
County Surveyor, Anoka County, Minnesota

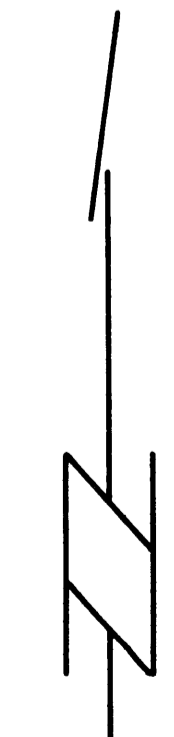
We hereby certify that the Village Council of the Village of East Bethel, Anoka County, Minnesota, duly accepted and approved the annexed plat of SUNNY VIEW SECOND ADDITION at a regular meeting thereof held this 14th day of August A.D. 1964.

Village of East Bethel, Minnesota
Raymond E. Peterson Mayor
Abelina B. Thielson Clerk

UNPLATTED



UNPLATTED



SCALE 1" = 100'
"•" Denotes iron monument
Bearings are assumed

I HEREBY CERTIFY THAT THE TAXES PAYABLE IN THE YEAR 1964 ON THE LANDS DESCRIBED WITHIN ARE PAID
Robert A. Peterson
Anoka County Treasurer
by *R. Peterson* Deputy

TAXES PAID
This 17th day of August 1964
Kenneth W. Campbell
Auditor, Anoka County, Minn.
by *Wayne A. Headlee* Deputy

215031
OFFICE OF REGISTER OF DEEDS
STATE OF MINNESOTA, COUNTY OF ANOKA } ss
I hereby certify that the within instrument was filed in this office for record on the 17th day of AUGUST 1964 A.D., 1964 at 11:45 o'clock A.M., and was duly recorded in book 3 of Plate page 16
Hertrude Shimer
Register of Deeds
by *Margaret Russell* Deputy