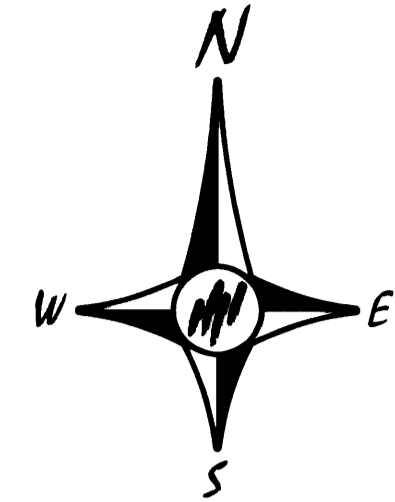


OFFICIAL PLAT

# SUNRISE HILLS

BK 60 Abct B 47  
CITY OF ST. FRANCIS  
COUNTY OF ANOKA  
SEC. 30, T. 34, R. 24



SCALE IN FEET  
1 INCH = 100 FEET

FOR THE PURPOSES OF THIS PLAT, THE WEST LINE OF THE SOUTH HALF OF THE SOUTHWEST QUARTER OF SECTION 30, TOWNSHIP 34, RANGE 24 HAS AN ASSUMED BEARING OF NORTH 00 DEGREES 15 MINUTES 01 SECONDS EAST.

ALL MONUMENTS REQUIRED BY MINNESOTA STATUTE AND NOT SHOWN ON THIS PLAT, WILL BE SET WITHIN ONE YEAR OF THE RECORDING DATE OF THIS PLAT AND SHALL BE EVIDENCED BY A 1/2 INCH BY 1 1/2 INCH IRON PIPE SET AND MARKED LICENSE NO. 16091.

● DENOTES ANOKA COUNTY MONUMENT

Doc # 1579640.1

OFFICE OF COUNTY RECORDER  
STATE OF MINNESOTA, COUNTY OF ANOKA

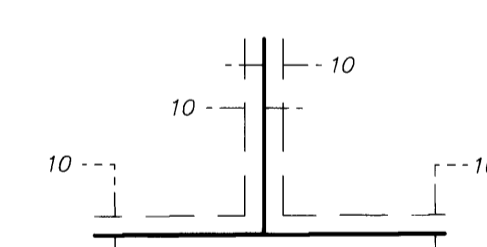
I hereby certify that the within instrument was filed in this office for record on the 19<sup>th</sup> June A.D., 2001 at 11:20 o'clock P.M., and was duly recorded.

in book 60 Abct page 47

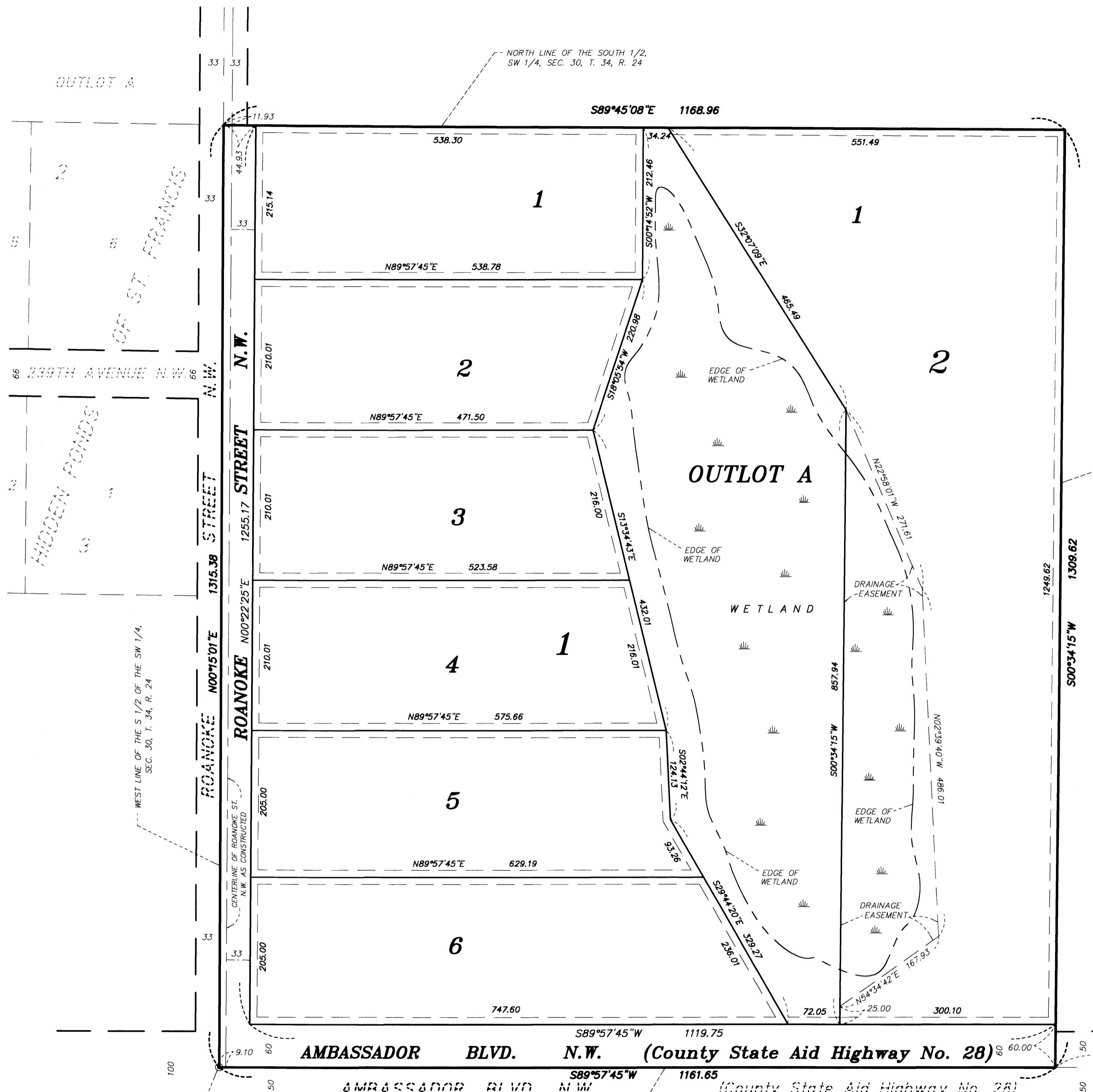
Maureen J. Devine  
County Recorder

By BLP  
Parish

Drainage and Utility Easements are shown thus:



Being 10 feet wide on all lot lines unless otherwise shown on this plat.



KNOW ALL PERSONS BY THESE PRESENTS: That Sunrise Homes, Inc., a Minnesota Corporation, owner, of the following described property situated in the County of Anoka, State of Minnesota, to wit:

That part of the South One-Half of the Southwest Quarter of Section 30, Township 34, Range 24, Anoka County, Minnesota, lying West of the East 1485 feet thereof, said distance being measured along the South line of said South One-Half of the Southwest Quarter.

Has caused the same to be surveyed, platted and known as SUNRISE HILLS and does hereby donate and dedicate to the public, for public use forever the street and boulevard and dedicate the drainage and utility easements as shown on the plat.

In witness whereof, said Sunrise Homes, Inc., a Minnesota corporation, has caused these presents to be signed by its proper officer this 18<sup>th</sup> day of June, 2001.

SUNRISE HOMES, INC.  
By Vincent J. Charles  
Vincent J. Charles

State of Minnesota  
County of Anoka

The foregoing instrument was acknowledged before me this 18<sup>th</sup> day of June, 2001

by Vincent J. Charles, as President of Sunrise Homes, Inc., a Minnesota corporation, on behalf of the corporation.

Sena H. Linden  
Notary Public  
Minnesota  
My Commission Expires Jan. 31, 2005

Notary Public, Anoka County, Minnesota  
My commission expires \_\_\_\_\_

I, Dale B. Anderson, hereby certify that I have surveyed and platted the property described on this plat as SUNRISE HILLS, that this plat is a correct representation of the survey, that all distances are correctly shown on the plat in feet and hundredths of a foot, that all monuments have been correctly placed in the ground or will be correctly placed in the ground within one year of recording as designated; that the outside boundary lines are correctly designated on the plat and that there are no wetlands as defined in Minnesota Statutes, Section 505.02, Subdivision 1 or public highways to be designated other than as shown.

Dale B. Anderson  
Dale B. Anderson, Land Surveyor  
Minnesota License Number 16091

State of Minnesota  
County of Anoka

The foregoing Surveyor's Certificate was acknowledged before me this 15<sup>th</sup> day of June, 2001 by Dale B. Anderson, Minnesota License No. 16091

William J. Haddock  
Notary Public, Anoka County, Minnesota  
My commission expires June 31, 2005

CITY OF ST. FRANCIS, MINNESOTA  
This plat of SUNRISE HILLS was approved and accepted by the City Council of the City of St. Francis, Minnesota, at a regular meeting thereof held this 2<sup>nd</sup> day of April, 2001. If applicable, the written comments and recommendations of the Commissioner of Transportation and the County Highway Engineer have been received by the city or the prescribed 30 day period has elapsed without receipt of such comments and recommendations, as provided by Minn. Statutes, Section 505.03, Subd. 2.

CITY COUNCIL OF THE CITY OF ST. FRANCIS, MINNESOTA  
By Raymond E. Cerny Mayor  
By Barbara J. Held City Administrator  
Clerk/Treasurer

ANOKA COUNTY SURVEYOR  
I hereby certify that this plat has been checked and approved this 19<sup>th</sup> day of JUNE, 2001  
By Larry D. Holm, Anoka County Surveyor

I HEREBY CERTIFY THAT THE CURRENT AND DELINQUENT TAXES ON THE LANDS DESCRIBED WITHIN ARE PAID AND THE TRANSFER IS ENTERED  
JUNE 19, 2001  
MAUREEN J. DEVINE  
PROPERTY TAX ADMINISTRATOR  
By S. Culver  
DEPUTY PROPERTY TAX ADMINISTRATOR

Anderson Land Surveying  
3199-345th Ave. N.E.  
Cambridge, MN 55008

Rec # 2001052881 \$335.00