

SUNSET MEADOWS ADDITION

CITY OF BLAINE COUNTY OF ANOKA

KNOW ALL MEN BY THESE PRESENTS: That Mervin E. Holwell and Agnes M. Holwell as trustees under the Declaration of Trust dated February 21, 1986, owners and proprietors and Gaughan Land, Incorporated, a Minnesota corporation, contract purchaser, of the following described property situate in the County of Anoka, State of Minnesota, to-wit:

That part of Lot 30, Auditor's Subdivision No. 133, lying South and West of Interstate Highway No. 35W as evidenced by Final Certificate dated and recorded on March 9, 1973 in Book 1023, Page 18 as Document No. 385093, according to the records of the office of the County Recorder Anoka County, Minnesota.

LOT SURVEYS COMPANY, INC.
LAND SURVEYORS

Have caused the same to be surveyed and platted as SUNSET MEADOWS ADDITION and do hereby donate and dedicate to the public for public use forever the Avenue, Lane, Streets and utility and drainage easements as shown on the plat. In witness whereof said Mervin E. Holwell and Agnes M. Holwell as trustees under the Declaration of Trust dated February 21, 1986, have hereunto set their hands this 13th day of MAY, 1987. In witness whereof said Gaughan Land, Incorporated, a Minnesota corporation, has caused these presents to be signed by its proper officer this 13th day of MAY, 1987.

Signed:

Mervin E. Holwell
Mervin E. Holwell, trustee

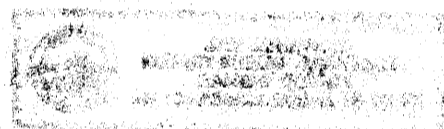
Agnes M. Holwell
Agnes M. Holwell, trustee

GAUGHAN LAND, INCORPORATED

P.J. Gaughan
P.J. Gaughan, President

State of Minnesota

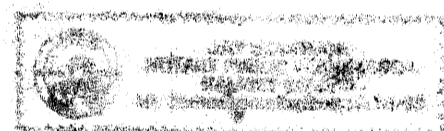
County of Anoka The foregoing instrument was acknowledged before me this 13th day of MAY, 1987, by Mervin E. Holwell and Agnes M. Holwell as trustees under the Declaration of Trustees under the Declaration of Trust dated February 21, 1986.



Jay Johnson
Notary Public, Anoka County, Minnesota
My Commission Expires 12-10-89

State of Minnesota

County of Anoka The foregoing instrument was acknowledged before me this 13th day of MAY, 1987, by P.J. Gaughan, president of Gaughan Land, Incorporated, a Minnesota corporation, on behalf of said corporation.



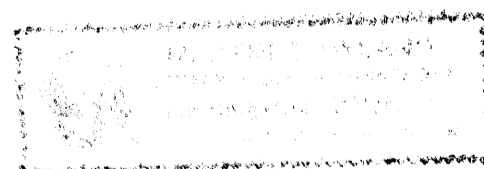
Jay Johnson
Notary Public, Anoka County, Minnesota
My Commission Expires 12-10-89

I hereby certify that I have surveyed and platted the property described on this plat as SUNSET MEADOWS ADDITION; that this plat is a correct representation of said survey; that the distances are correctly shown on said plat in feet and hundredths of a foot; that all monuments have been correctly placed in the ground as shown on said plat; that the outside boundary lines are correctly designated on said plat; and that there are no wetlands or public highways to be designated other than as shown thereon.

Raymond A. Prasch
Raymond A. Prasch, Registered Land Surveyor
Minnesota Registration Number 6743

State of Minnesota

County of Hennepin The foregoing instrument was acknowledged before me this 13th day of MAY, 1987, by Raymond A. Prasch, Registered Land Surveyor.



Milton S. Hyland
Milton E. Hyland, Notary Public, Henn. Co., Minn.
My Commission Expires November 19, 1987

"NO DELINQUENT TAXES AND TRANSFER ENTLRED"
July 16th 1987
Charles R. Aschroff
Auditor, Anoka County
By Camela Schultz
Deputy

I HEREBY CERTIFY THAT THE TAXES PAYABLE IN THE YEAR '87 ON THE LANDS DESCRIBED WITHIN ARE PAID
Donald C. Bailey - Mary Ann Muller
Anoka County Treasurer Dep

770589
OFFICE OF COUNTY RECORDER
STATE OF MINNESOTA, COUNTY OF ANOKA
I hereby certify that the within instrument was filed in this office for record on the JUL 16 1987 A.D., 19 1:50 o'clock P. M., and was duly recorded in book 38 OF PLATS page 3
Ted R. Umbell
County Recorder
By 9th Waldman
Deputy



This plat of SUNSET MEADOWS ADDITION was approved and accepted by the City Council of Blaine, Minnesota at a regular meeting thereof held this 17th day of June, 1987. If applicable, the written comments and recommendations of the Commissioner of Transportation and the County Highway Engineer have been received by the City or the prescribed 30 day period has elapsed without receipt of such comments and recommendations, as provided by Minnesota Statutes Section 505.03, Subd. No. 2.

By Allyn Lundberg Mayor By Joyse Turstel Clerk

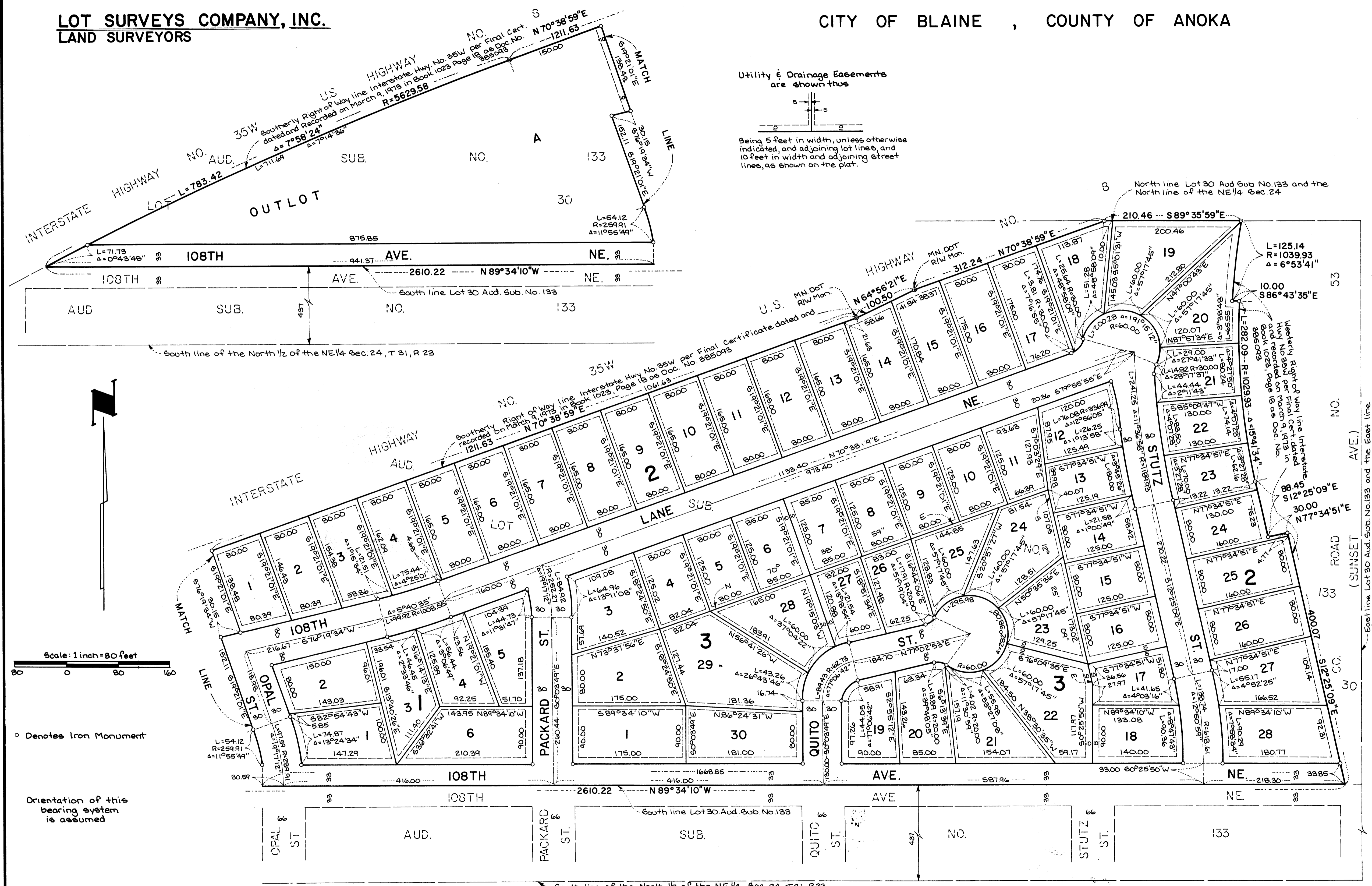
Checked and approved this 15th day of July, 1987.

M. D. Anderson
Anoka County Surveyor

SUNSET MEADOWS ADDITION

CITY OF BLAINE , COUNTY OF ANOKA

LOT SURVEYS COMPANY, INC.
LAND SURVEYORS



Scale: 1 inch = 80 feet

Denotes Iron Monument

Orientation of this bearing system is assumed