

LOT SURVEYS COMPANY, INC.
LAND SURVEYORS

SWANSONS BROOK VIEW 2ND ADDITION

TOWNSHIP OF OAK GROVE COUNTY OF ANOKA

KNOW ALL MEN BY THESE PRESENTS: That Arthur J. Swanson, single, owner and proprietor, of the following described property situate in the County of Anoka, State of Minnesota, to-wit:

The Southeast Quarter of the Southwest Quarter of Section 6, Township 33, Range 24, Anoka County, Minnesota. Except that part thereof embraced in the plat of SWANSONS BROOK VIEW.
Also except the north 330.00 feet of the west 660.00 feet thereof.

Has caused the same to be surveyed and platted as SWANSONS BROOK VIEW 2ND ADDITION and does hereby donate and dedicate to the public for public use forever the Boulevard, Avenue and easements for utility and drainage purposes as shown on the plat. In witness whereof said Arthur J. Swanson, single, has hereunto set his hand this 15th day of Sept, 1989.

Signed:

Arthur J. Swanson
Arthur J. Swanson

State of Minnesota
County of Anoka The foregoing instrument was acknowledged before me this 1st day of September, 1989, by Arthur J. Swanson, single.

Patricia L. Bley
NOTARY PUBLIC - MINNESOTA
ISANTI COUNTY
My Commission Expires 3-26-93

Patricia L. Bley
Notary Public, Isanti County, Minnesota
My Commission Expires 3/26/93

I hereby certify that I have surveyed and platted the property described on this plat as SWANSONS BROOK VIEW 2ND ADDITION; that this is a correct representation of said survey; that the distances are correctly shown on said plat in feet and hundredths of a foot; that all monuments have been correctly placed in the ground as shown on said plat; that the outside boundary lines are correctly designated on said plat; and that there are no wetlands or public highways to be designated other than as shown thereon.

Raymond A. Prash
Raymond A. Prash, Registered Land Surveyor
Minnesota Registration Number 6743

State of Minnesota
County of Hennepin The foregoing instrument was acknowledged before me this 31ST day of AUGUST, 1989, by Raymond A. Prash, Registered Land Surveyor.

MILTON E. HYLAND
NOTARY PUBLIC - MINNESOTA
HENNEPIN COUNTY
My Commission Expires 11-18-93

Milton E. Hyland
Milton E. Hyland, Notary Public, Hennepin County, Minn.
My Commission Expires November 18, 1993

This plat of SWANSONS BROOK VIEW 2ND ADDITION was approved and accepted by the Town Board of the Township of Oak Grove, Minnesota at a regular meeting thereof held this 26th day of June, 1989. If applicable, the written comments and recommendations of the Commissioner of Transportation and the County Highway Engineer have been received by the Township or the prescribed 30 day period has elapsed without receipt of such comments and recommendations as provided by Minn. Statutes Section 505.03, Subd. 2.

Robert P. ...
Chairman of Town Board

John Jay McEnder
Executive Secretary

This plat of SWANSONS BROOK VIEW 2ND ADDITION was approved and accepted by the Board of County Commissioners of the County of Anoka, State of Minnesota at a regular meeting held this 10th day of Sept., 1989.

Dan Erhart
Chairman

John Jay McEnder
Executive Secretary

This plat was approved as to form and execution on this 13th day of September, 1989.

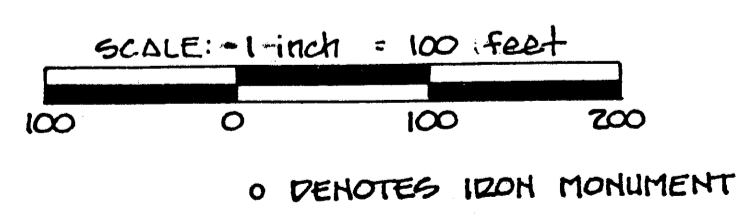
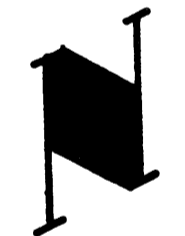
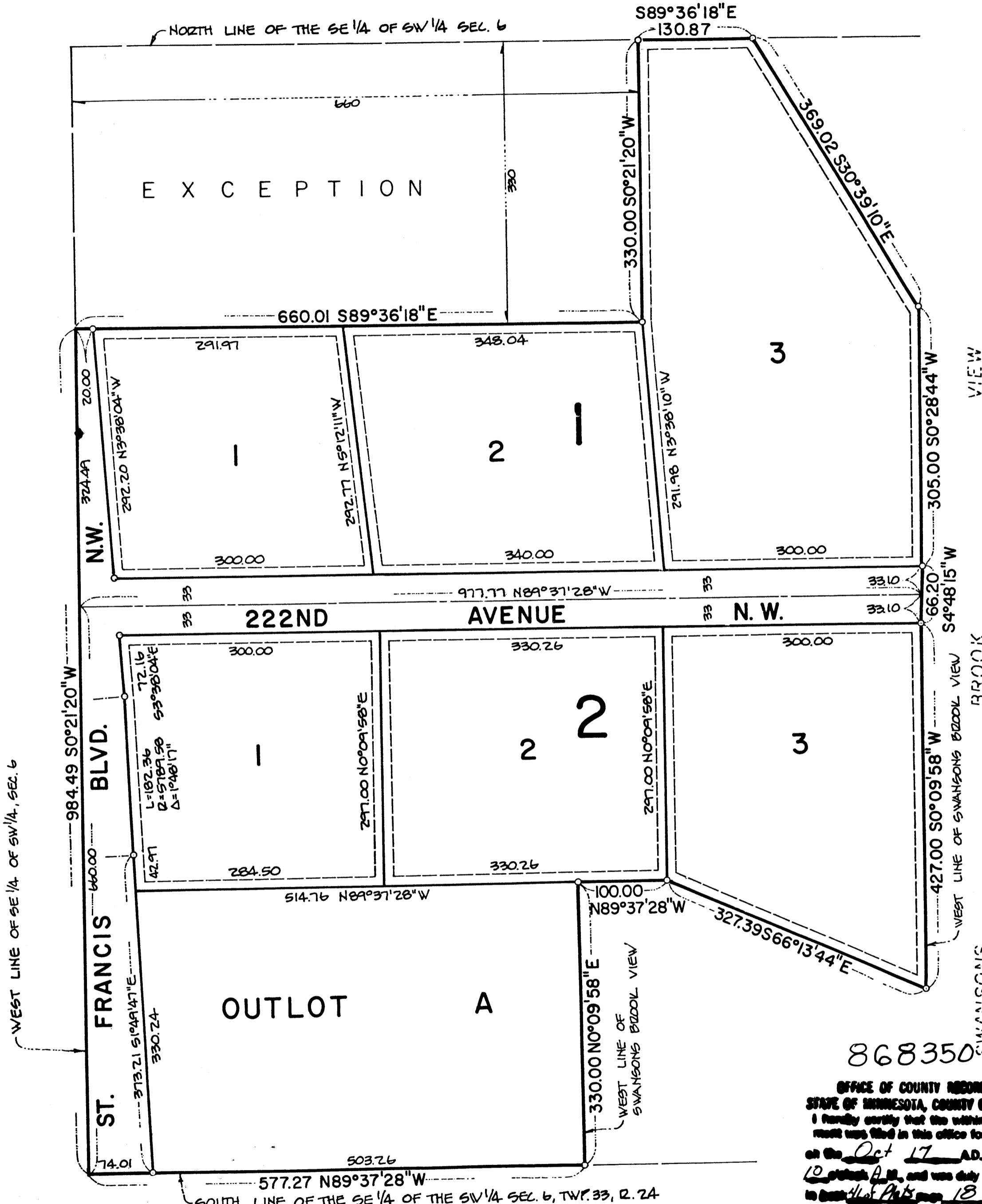
Anthony C. Palumbo
County Attorney, Anoka County, Minnesota

Recommended for approval this 7th day of Sept., 1989.

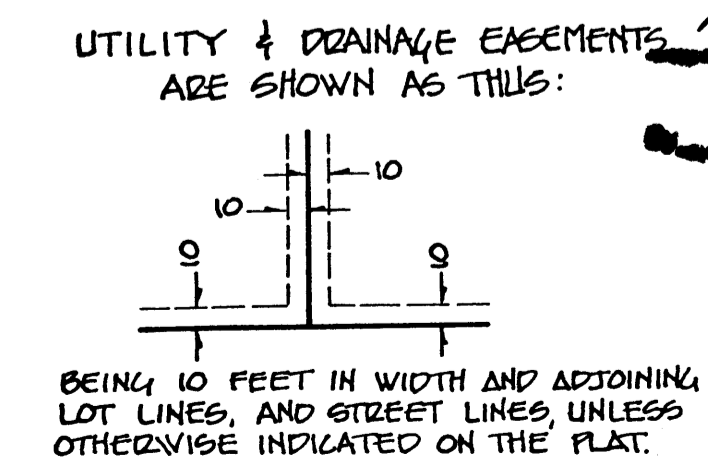
Paul K. Rind
Anoka County Highway Engineer

Checked and approved this 7th day of Sept, 1989.

Merlyn D. Anderson
Merlyn D. Anderson, Anoka County Surveyor



FOR THE PURPOSES OF THIS PLAT THE SOUTH LINE OF THE SOUTHWEST QUARTER SEC. 6, TWP. 33, R. 24 IS ASSUMED TO BEAR S89°37'28\"



OFFICE OF COUNTY RECORDER
STATE OF MINNESOTA, COUNTY OF ANOKA
I hereby certify that the within instrument was filed in this office for record on the Oct 17 AD, 1989
at Anoka, MN, and was duly recorded in Book 13 page 13
Ted Demuth
County Recorder
Sranta Kay Ege
Deputy
"NO DELINQUENT TAXES AND TRANSFER ENTLRED"
October 17th 1989
Charles R. Johnson
Auditor, Anoka County
BY Donella Schuff
Deputy