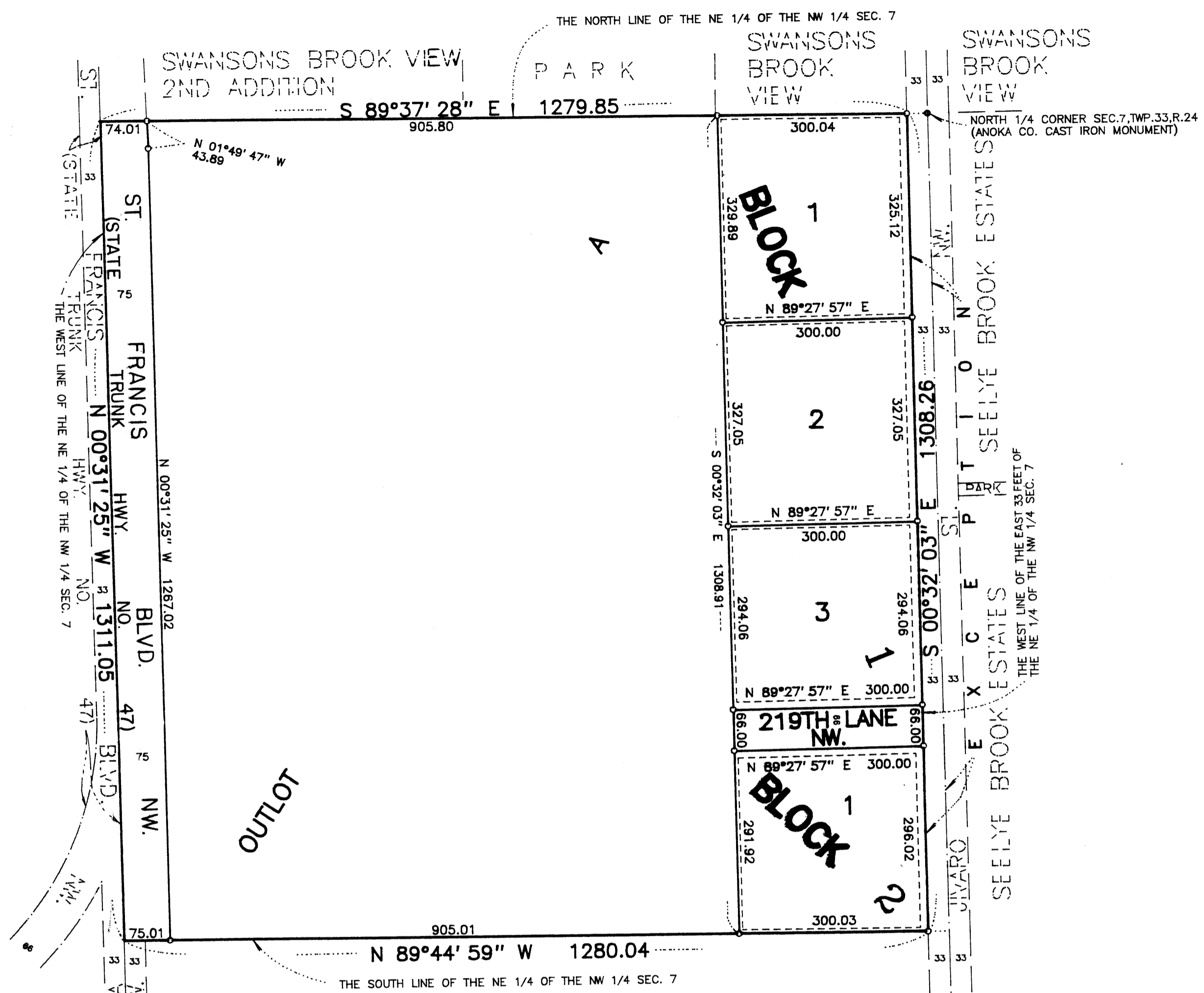


SWANSONS BROOK VIEW 3RD ADDITION

TOWNSHIP OF OAK GROVE, COUNTY OF ANOKA

LOT SURVEYS COMPANY, INC.
LAND SURVEYORS



KNOW ALL MEN BY THESE PRESENTS: That Arthur J. Swanson and Julie A. Swanson, his wife, owners and proprietors, of the following described property situate in the County of Anoka, State of Minnesota, to-wit:

The Northeast Quarter of the Northwest Quarter of Section 7, Township 33, Range 24, EXCEPT the East 33.00 feet thereof, Anoka County, Minnesota

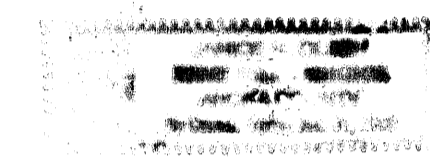
Have caused the same to be surveyed and platted as SWANSONS BROOK VIEW 3RD ADDITION and do hereby donate and dedicate to the public for public use forever the Lane, Boulevard and easements for utility and drainage purposes as shown on the plat. In witness whereof said Arthur J. Swanson and Julie A. Swanson, his wife, have hereunto set their hands this 18th day of November, 1993.

Signed:

Arthur J. Swanson
Arthur J. Swanson

Julie A. Swanson
Julie A. Swanson

State of Minnesota
County of Anoka The foregoing instrument was acknowledged before me this 18th day of November, 1993, by Arthur J. Swanson and Julie A. Swanson, his wife.



Julie M. Olsen
Notary Public, Anoka County, Minnesota
My Commission Expires 1-31-00

I hereby certify that I have surveyed and platted the land described on this plat as SWANSONS BROOK VIEW 3RD ADDITION; that this plat is a correct representation of said survey; that all distances are correctly shown on said plat in feet and hundredths of a foot; that all monuments have been correctly placed in the ground as shown on said plat or will be placed as required by the local governmental unit as designated in M.S. 505.02, Subdivision 1, to be designated on said plat.

Raymond A. Prasch
Raymond A. Prasch, Land Surveyor
Minnesota License No. 6743

State of Minnesota
County of Hennepin The foregoing instrument was acknowledged before me this 8th day of October, 1993, by Raymond A. Prasch, Registered Land Surveyor.



Therese Prasch
Therese Prasch, Notary Public, Hennepin County, Minnesota
My Commission Expires November 19, 1996

This plat of SWANSONS BROOK VIEW 3RD ADDITION was approved and accepted by the Town Board of the Township of Oak Grove, Minnesota at a regular meeting thereof held this 30th day of August, 1993. If applicable, the written comments and recommendations of the Commissioner of Transportation and the County Highway Engineer have been received by the Township or the prescribed 30 day period has elapsed without receipt of such comments and recommendations, as provided by Minn. Statutes Section 505.03, Subd. 2.

Rick Kantorowicz
Chairman of Town Board

Joel Prus
Clerk of Town Board

This plat of SWANSONS BROOK VIEW 3RD ADDITION was approved and accepted by the Board of County Commissioners of the County of Anoka, State of Minnesota at a regular meeting held this 14th day of Dec, 1993.

Dan Ehart
Chairman

John Jay McJinden
County Administrator

This plat was approved as to form and execution on this 14th day of December, 1993.

Anthony C. Palumbo
County Attorney, Anoka County, Minnesota

Recommended for approval this 8th day of December, 1993.

Paul K. Lund
Anoka County Highway Engineer

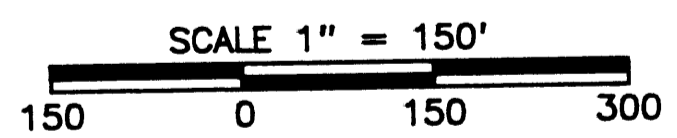
Checked and approved this 30th day of Nov, 1993.

Meryl D. Anderson
Meryl D. Anderson, Anoka County Surveyor

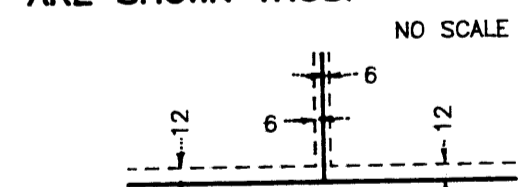
1084799
OFFICE OF COUNTY RECORDER
STATE OF MINNESOTA, COUNTY OF ANOKA
I hereby certify that the within instrument was filed in this office for record on the 14th of December A.D., 1993 at 10 o'clock P.M., and was duly recorded in book 47 of Plats page 4a
Edward M. Treska
County Recorder
By K. Rothrock
Deputy

FOR THE PURPOSES OF THIS PLAT THE SOUTH LINE OF THE NE 1/4 OF THE NW 1/4 OF SEC. 7 TWP. 33, R. 24 IS ASSUMED TO BEAR N 89°44' 59" W

○ DENOTES IRON MONUMENT



UTILITY AND DRAINAGE EASEMENTS ARE SHOWN THUS:



BEING 6 FEET IN WIDTH AND ADJOINING LOT LINES, AND 12 FEET IN WIDTH AND ADJOINING STREET LINES AS SHOWN ON THE PLAT.

I HEREBY CERTIFY THAT THE CURRENT AND DELINQUENT TAXES ON THE LANDS DESCRIBED WITHIN ARE PAID AND THE TRANSFER IS
ENTERED Dec 14 1993
EDWARD M. TRESKA
PROPERTY TAX ADMINISTRATOR
By Debbie S. Reimann
DEPUTY PROPERTY TAX ADMINISTRATOR