

SWANSTROM'S COURT ADDITION

CITY OF FRIDLEY

Know all men by these presents: That Swanstrom Company Incorporated, a Minnesota Corporation owners and proprietors of the following described property situate in the County of Anoka, State of Minnesota to-wit: All of Lot 7 except the westerly 150.0 feet and all of Lot 8 except the westerly 400.0 feet of Subdivision of Lot 10 Auditor's Subdivision No. 94 and the South 84.87 feet of the East 756.0 feet of the Southwest quarter of Section 24, Township 30, Range 24, have caused the same to be surveyed and platted as SWANSTROM'S COURT and do hereby donate and dedicate to the public for public use for ever the Avenues and Court as shown on the annexed plat, also subject to Utility and Drainage easements as shown on the annexed plat. In witness whereof we have set our hands and seals on

This 21 day of April A.D. 1959

In the presence of

Swanstrom Company Incorporated
 Daniel Plank and Ronald C. Jackson as to A.E. Swanstrom President
 Daniel Plank and Ronald C. Jackson as to George Mewhorter Vic-President

State of Minnesota) S.S.
 County of Anoka) On this 21 day of April A.D. 1959 before me, a Notary Public within and for said County and State, personally appeared A.E. Swanstrom and George Mewhorter, to me personally known who being by me each duly sworn did say that they are respectively president and vice-president of Swanstrom Company Incorporated, the corporation named in the foregoing instrument, that the seal affixed to said instrument is the corporate seal of said corporation and said instrument was signed and sealed in behalf of said corporation by authority of its Board of Directors and said A.E. Swanstrom and George Mewhorter acknowledge said act to be the free act and deed of said corporation.

Marvin C. Brunell
 Notary Public, Anoka County, Minnesota
 My commission Expires Dec 26, 1964

I do hereby certify that I have surveyed and platted the land described in the dedication on this plat as SWANSTROM'S COURT; that the plat is a correct representation of said survey; that all distances are correctly shown on said plat in figures denoting feet and decimals of a foot; that the monuments for the guidance of future surveys have been correctly placed in the ground as shown on said plat; that the outside boundaries of the land are correctly designated on said plat; that there are no wet lands or public highways to be designated on said plat other than are shown thereon.

F. C. Jackson
 Registered Land Surveyor, Minnesota Reg. # 3600

State of Minnesota) S.S.
 County of Anoka) Above certificate subscribed and sworn to before me a Notary Public within and for said County and State on

This 21 day of April A.D. 1959

Marvin C. Brunell
 Notary Public, Hennepin County, Minnesota
 My Commission Expires Dec 26, 1964

We hereby certify that the City Council of the City of Fridley, Anoka County, Minnesota duly accepted and approved the annexed plat of SWANSTROM'S COURT, at a regular meeting held

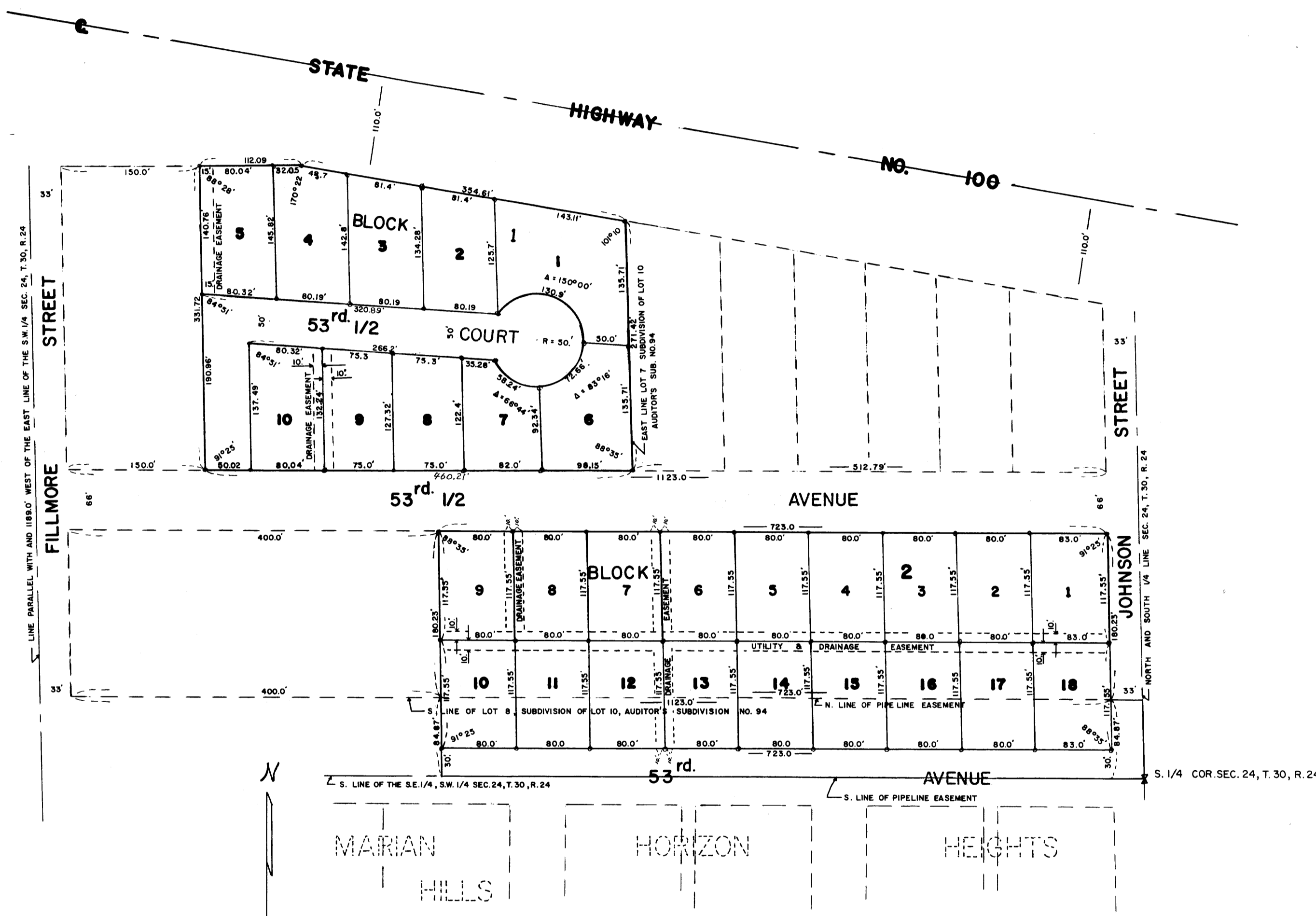
This 23 day of April A.D. 1959

HEREBY CERTIFY THAT TAXES FOR THE YEAR 1958 ON THE LANDS DESCRIBED WITHIN ARE PAID
Walter B. Bowers County Treasurer
 City of Fridley, Anoka County, Minnesota
 By its Mayor Marvin C. Brunell
 By its Clerk

TAXES PAID

This 27 day of May 1959
Kenneth W. Campbell
 Auditor, Anoka County, Minn.
 By John E. Baze Deputy

100291
 OFFICE OF REGISTER OF DEEDS
 STATE OF MINNESOTA, COUNTY OF ANOKA
 I hereby certify that the within instrument was filed in this city on for record on the 27th day of May 1959 in book 274850 page 37
John E. Baze
 Register of Deeds



F. C. JACKSON
LAND SURVEYOR

SCALE 1" = 100'
 DENOTES IRON MONUMENT