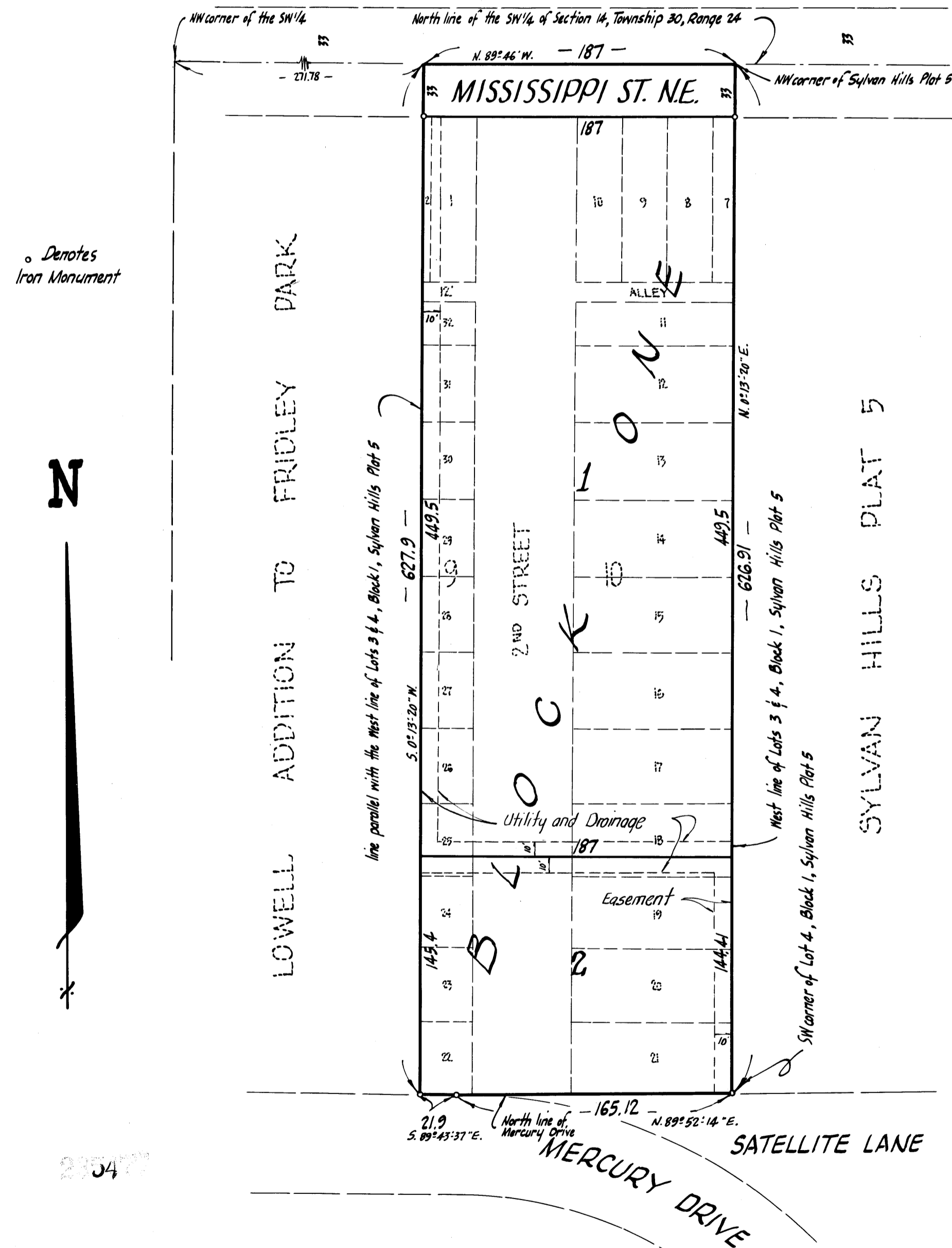


SYLVAN HILLS PLAT 6

- CITY of FRIDLEY - COUNTY of ANOKA -

Scale 1"=60' Bearings are assumed March, 1962

RICE CREEK PLAZA SOUTH ADDITION



Denotes Iron Monument

N

OFFICE OF REGISTER OF DEEDS
STATE OF MINNESOTA, COUNTY OF ANOKA
I hereby certify that the within instrument was filed in this office for record on the _____ day of _____ A.D., 1962, at _____ o'clock P.M., and was duly recorded in book _____ of PLATS, page _____
G. Strickland
Register of Deeds

SYLVAN HILLS PLAT 3

I HEREBY CERTIFY THAT TAXES FOR THE YEAR 1961 ON THE LANDS DESCRIBED WITHIN WERE PAID
Paul J. Peterson
County Treasurer
By L. J. Jannin Deputy

KNOW ALL MEN BY THESE PRESENTS: that Carlson-LaVine, Inc., a Minnesota Corporation, owners and proprietors of the following described property situate in the State of Minnesota and County of Anoka, to-wit: All that part of the West 1/2 of the SW 1/4 of Section 14, Township 30, Range 24, Anoka County, Minnesota or that part of Lots 7 thru 21, Block 10, Lowell Addition to Fridley Park and part of vacated alley in said Block 10 and that part of Lots 1, 2, and Lots 22 thru 32, Block 9 in said Addition and part of vacated alley in said Block 9 and all of vacated 2nd Street described as follows: Beginning at a point on the North line of said SW 1/4, distant 271.78 feet East of the Northwest corner of said SW 1/4, thence South and parallel with the West line of Lots 3 and 4, Block 1, Sylvan Hills Plat 5, to the North line of Mercury Drive; thence East along the North line of Mercury Drive and Satellite Lane to the Southwest corner of said Lot 4, Block 1; thence North along the West line of said Lots 3 and 4, Block 1 and its Northerly extension to the Northwest corner of said Sylvan Hills Plat 5; thence West 187 feet more or less to the point of beginning; have caused the same to be surveyed and platted as SYLVAN HILLS PLAT 6, and do hereby donate and dedicate to the public for public use forever the Street ^{and Utility and Drainage easements} as shown on the annexed plat. In witness whereof said Carlson-LaVine, Inc., has caused these presents to be signed by its proper officers and its corporate seal to be affixed this 4th day of April A.D. 1962.

In Presence of:-
Erick L. M. Schindel } As to Erick LaVine and LeRoy Arnold
Milton S. Ashauer }
CARLSON - LA VINE, INC.
Erick LaVine President
LeRoy Arnold Secretary

State of Minnesota }
County of Anoka } On this 4th day of April A.D. 1962, before me, a Notary Public, within and for said County and State, personally appeared Erick LaVine and LeRoy Arnold, to me personally known who, being each by me duly sworn did say that they are respectively the President and Secretary of Carlson-LaVine, Inc., the corporation named in the foregoing instrument, and that the seal affixed to said instrument is the corporate seal of said corporation, and that said instrument was signed in behalf of said corporation by authority of its Board of Directors and said Erick LaVine and LeRoy Arnold acknowledged said instrument to be the free act and deed of said Corporation.
Suzanne Miskowic
Notary Public, Anoka County, Minnesota
My Commission Expires Dec. 26, 1964

I hereby certify that I have surveyed and platted the property described on this plat as SYLVAN HILLS PLAT 6; that this plat is a correct representation of said survey, that all distances are correctly shown on the said plat in feet and decimals of a foot; that the monuments for guidance of future surveys have been correctly placed in the ground as shown on said plat; that the outside boundary lines are correctly designated on said plat, and that there are no wet lands or public highways to be designated on said plat other than are shown thereon.
E. A. Rathbun
Surveyor - Minnesota Registration No 3795

State of Minnesota }
County of Hennepin } Above certificate subscribed and sworn to before me, a Notary Public within and for said State and County on this 22nd day of March A.D. 1962.
Warren O. Olson
Notary Public, Hennepin County, Minnesota
My Commission Expires _____

We hereby certify that the City Council of the City of Fridley, Anoka County, Minnesota, duly accepted and approved the annexed plat of SYLVAN HILLS PLAT 6, at a regular meeting thereof held this 21 day of May A.D. 1962.
G. E. Meig Mayor
M. J. Brunner Clerk

Checked and approved by me this 15th day of June A.D. 1962.
Robert W. Anderson Anoka County Surveyor

TAXES PAID
This 15th day of June 1962
Samuel W. Campbell
Auditor, Anoka County, Minn.
Sub E. Page Deputy

