

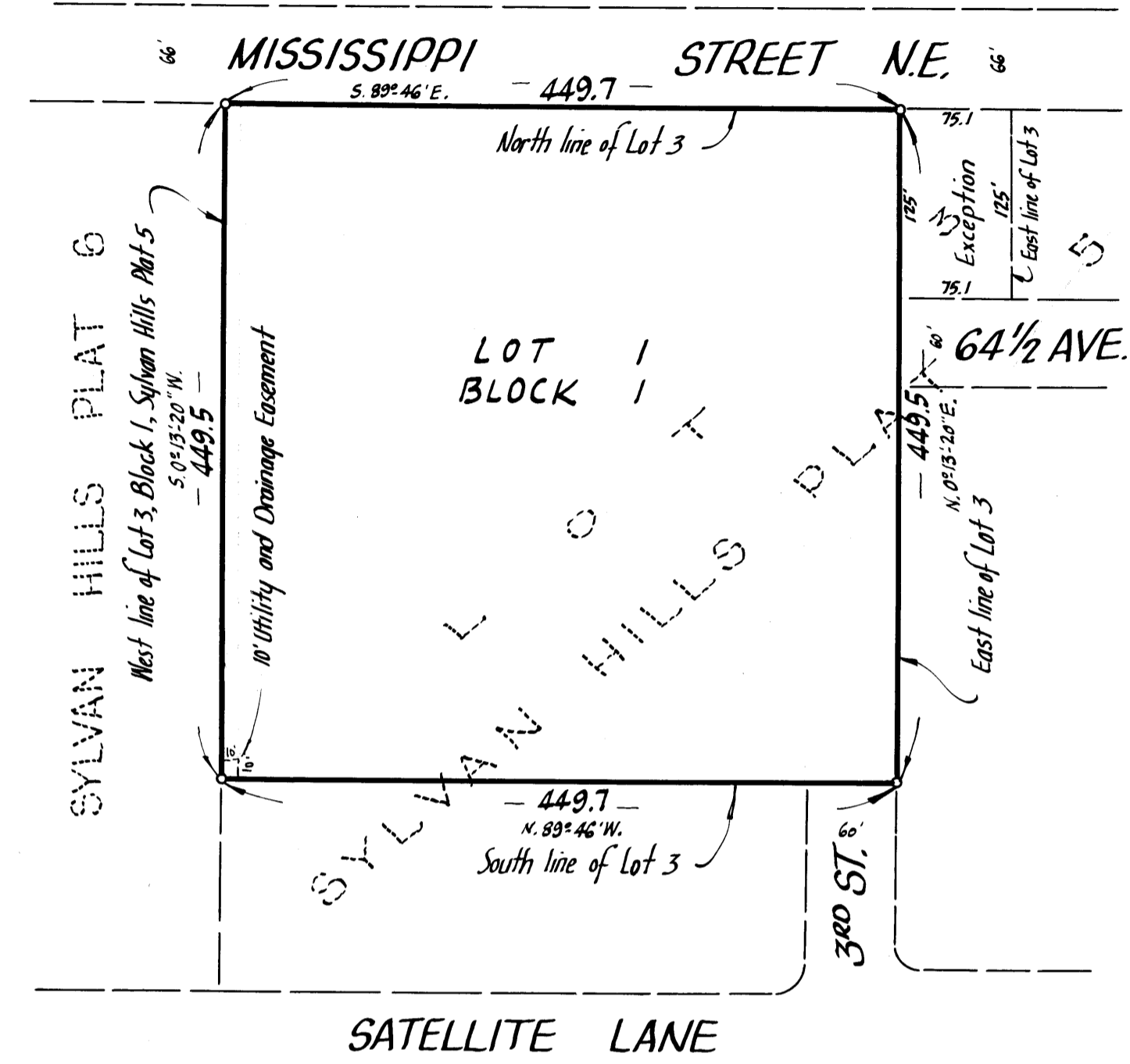
SYLVAN HILLS PLAT 7

— City of Fridley — County of Anoka —

RICE CREEK PLAZA SOUTH ADDITION

o Denotes Iron Monument

April 1962 Bearings are assumed Scale 1"=100'



Suburban Engineering, Inc.
— Engineers and Surveyors —

KNOW ALL MEN BY THESE PRESENTS: that Rice Plaza, a partnership consisting of Fred Paul Levy, James R. Ridgeway, Julia Ridgeway, Benjamin Howard, Louis Gainsley, Donald E. Ryan, Willis M. Allen and Shopping Centers, Inc., owners and proprietors of the following described property situate in the State of Minnesota and County of Anoka, to-wit: Lot 3, Block 1, Sylvan Hills Plat 5, except the East 75.1 feet of the North 125 feet thereof; have caused the same to be surveyed and platted as SYLVAN HILLS PLAT 7, subject to the Utility and Drainage Easement as shown on the annexed plat. In witness whereof said Rice Plaza has caused these presents to be signed by Fred Paul Levy, partner in said partnership; said Fred Paul Levy has hereunto set his hand and seal this 10th day of April A.D. 1962.

In Presence of Lyle S. Berg } As to Fred Paul Levy
Eduard B. Mervin }

RICE PLAZA
Fred Paul Levy
(FRED PAUL LEVY - PARTNER)

State of Minnesota }
County of Hennepin } On this 10th day of April A.D. 1962, before me a Notary Public within and for said County and State, personally appeared Fred Paul Levy who being by me duly sworn did say that he is a Partner in Rice Plaza, the partnership named in the foregoing instrument, that said instrument was signed in behalf of said partnership, and that said Fred Paul Levy acknowledged said instrument to be the free act and deed of said Partnership.

Warren O. Olson
Notary Public, Hennepin County, Minnesota
My Commission Expires _____

We hereby certify, that the City Council of the City of Fridley, Anoka County, Minnesota, duly accepted and approved the annexed plat of SYLVAN HILLS PLAT 7, at a regular meeting thereof held this 2nd day of July A.D. 1962.

CITY OF FRIDLEY, ANOKA COUNTY, MINNESOTA

by T. E. Seig Mayor
by Martin Brunner Clerk

Checked and approved this 3rd day of October A.D. 1962.

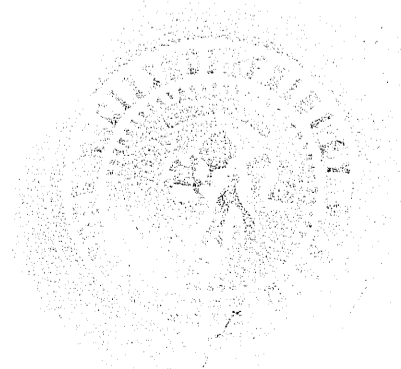
by Roland W. Anderson
Anoka County Surveyor

I hereby certify that I have surveyed and platted the property described on this plat as SYLVAN HILLS PLAT 7, that this plat is a correct representation of said survey; that all distances are correctly shown on said plat in feet and decimals of a foot, that the monuments for guidance of future surveys have been correctly placed in the ground as shown on said plat, that the outside boundary lines are correctly designated on said plat, and that there are no wet lands or public highways to be designated on said plat other than are shown thereon.

E. A. Rattum
Surveyor - Minnesota Registration No 3795

State of Minnesota }
County of Hennepin } Above certificate subscribed and sworn to before me, a Notary Public within and for said County and State on this 10th day of April A.D. 1962.

Warren O. Olson
Notary Public, Hennepin County, Minnesota
My Commission Expires _____



I HEREBY CERTIFY THAT TAXES FOR THE YEAR 1961 ON THE LANDS DESCRIBED WITHIN ARE PAID
Paul J. Peterson
City Treasurer

TAXES PAID
This 10th day of April 1962
Annath M. Campbell
Auditor, Anoka County, Minn.

OFFICE OF REGISTER OF DEEDS
STATE OF MINNESOTA, COUNTY OF ANOKA
I hereby certify that the within instrument was filed in this office for record on the 10th day of April, 1962 at 2 o'clock P.M. and was duly recorded in book 22 of Platage 22

Gertrude Skinner
Register of Deeds
By Margaret Russell
Deputy