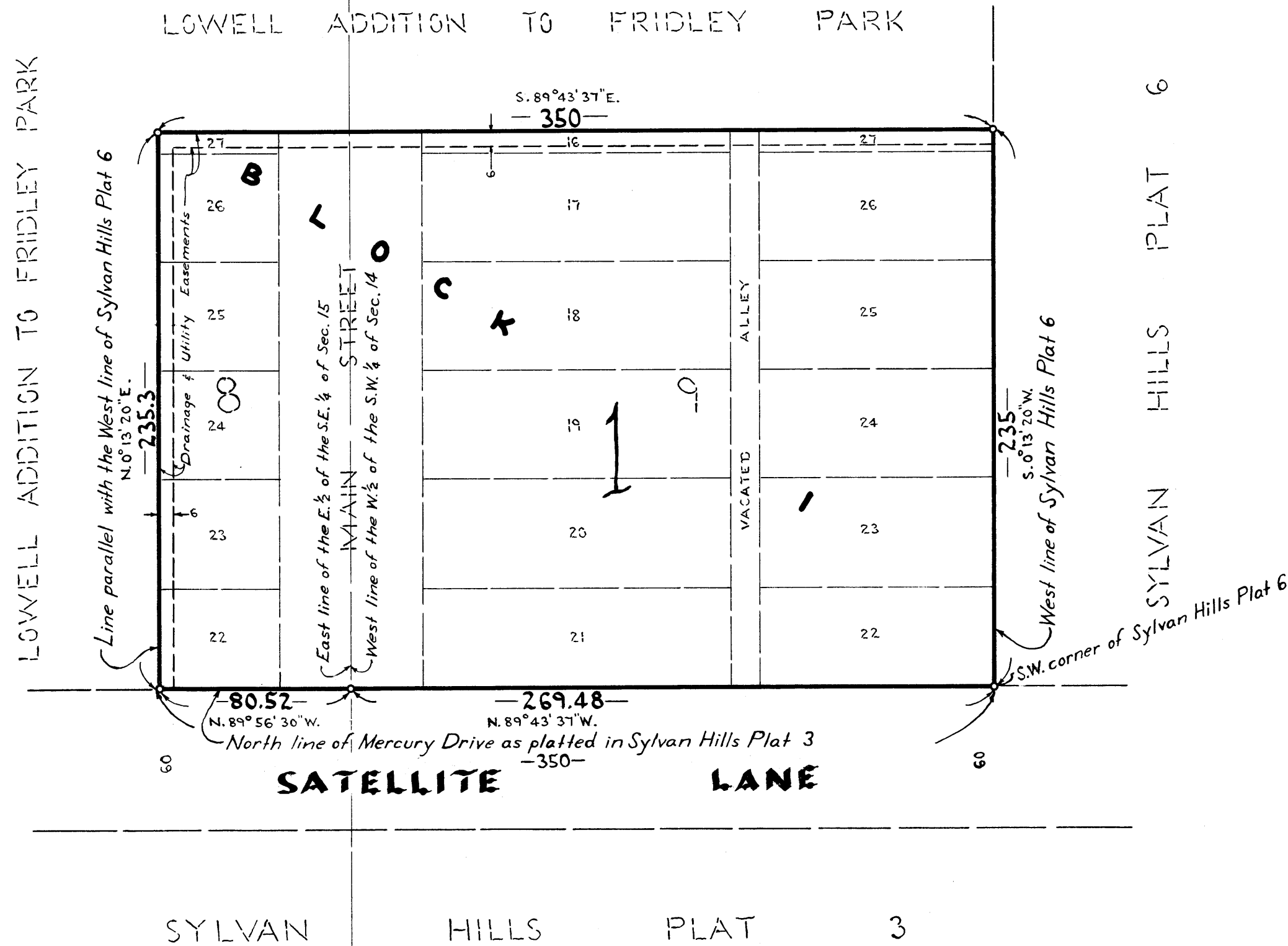


SYLVAN HILLS PLAT 8

- CITY of FRIDLEY - COUNTY of ANOKA -

NORTH

° Denotes Iron Monuments



Suburban Engineering, Inc.
 —Engineers & Surveyors—
 Bearings are assumed
 Scale 1"=50' September 1965

KNOW ALL MEN BY THESE PRESENTS: That Carlson-LaVine, Inc., a Minnesota Corporation, owners and proprietors of the following described property situate in the State of Minnesota and County of Anoka, to-wit: That part of the West half of the Southwest quarter of Section 14, and that part of the East half of the Southeast quarter of Section 15, Township 30, Range 24, Anoka County, Minnesota or that part of Lots 16 through 27, Block 9, Lowell Addition to Fridley Park and part of vacated alley in said Block 9, and that part of Lots 22 through 27, Block 8 in said Addition and part of vacated Main Street, described as follows: Beginning at the Southwest corner of Sylvan Hills Plat 6; thence West along the North line of Mercury Drive as platted in Sylvan Hills Plat 3, a distance of 350 feet; thence North parallel with the West line of Sylvan Hills Plat 6, a distance of 235.3 feet; thence East to its intersection with the West line of said Sylvan Hills Plat 6, said intersection being 235 feet North of said Southwest corner of Sylvan Hills Plat 6; thence South along said West line to the point of beginning; have caused the same to be surveyed and platted as SYLVAN HILLS PLAT 8, subject to Drainage and Utility Easements as shown on the annexed plat. In witness whereof said Carlson-LaVine, Inc., has caused these presents to be signed by its proper officers and its corporate seal to be affixed this 16th day of October A.D. 1965.

In Presence of:
Glen Rockford
Patricia A. Thirkland
 As to Erick LaVine and LeRoy Arnold

CARLSON - LA VINE, INC.
Erick LaVine President
LeRoy Arnold Secretary

State of Minnesota County of Anoka On this 16th day of October A.D. 1965, before me, a Notary Public, within and for said County and State, personally appeared Erick LaVine and LeRoy Arnold, to me personally known who, being each by me duly sworn did say that they are respectively the President and Secretary of Carlson-LaVine, Inc., the corporation named in the foregoing instrument, and that the seal affixed to said instrument is the corporate seal of said corporation, and that said instrument was signed in behalf of said corporation by authority of its Board of Directors and said Erick LaVine and LeRoy Arnold acknowledged said instrument to be the free act and deed of said Corporation.

Andrew E. Miner
 Notary Public, Anoka County, Minnesota
 My Commission Expires
 ANDREW E. MINER
 Notary Public, Hennepin County, Minn.
 My Commission Expires Oct. 10, 1967

I hereby certify that I have surveyed and platted the property described on this plat as SYLVAN HILLS PLAT 8; that this plat is a correct representation of said survey; that all distances are correctly shown on the said plat in feet and decimals of a foot; that the monuments for guidance of future surveys have been correctly placed in the ground as shown on said plat, that the outside boundary lines are correctly designated on said plat, and that there are no wet lands or public highways to be designated on said plat other than as shown thereon.

E. A. Rathbun
 Surveyor - Minnesota Registration No. 3795

State of Minnesota County of Hennepin Above certificate subscribed and sworn to before me, a Notary Public within and for said State and County on this 16th day of October A.D. 1965.

Warren O. Olson
 Notary Public, Hennepin County Minnesota
 WARREN O. OLSON
 My Commission Expires
 Notary Public, Hennepin County, Minn.
 My Commission Expires July 12, 1967

We hereby certify that the City Council of the City of Fridley, Anoka County, Minnesota, duly accepted and approved the annexed plat of SYLVAN HILLS PLAT 8, at a regular meeting thereof held this 16th day of October A.D. 1965.

CITY OF FRIDLEY, ANOKA COUNTY, MINNESOTA
 by William J. Nee Mayor
 by Martin C. Brunson Clerk

Checked and approved by me this 16th day of November A.D. 1965.
 by Robert W. Anderson Anoka County Surveyor

OFFICE OF REGISTER OF DEEDS }
 STATE OF MINNESOTA, COUNTY OF ANOKA }
 I hereby certify that the within instrument was filed in this office for record on the 16th day of November A.D. 1965 at 2:20 o'clock P.M. and was duly recorded in book L of Deeds page 21

Hertrude Skinner
 Register of Deeds
 By Margaret Rensick Deputy

TAXES PAID
 This 16th day of Nov 1965
Kenneth J. Campbell
 Auditor, Anoka County, Minn.
Otto J. Meyer Deputy

I HEREBY CERTIFY THAT THE TAXES PAYABLE IN THE YEAR 1965 ON THE LANDS DESCRIBED HEREIN ARE PAID
Robert A. Peterson
 Anoka County Treasurer