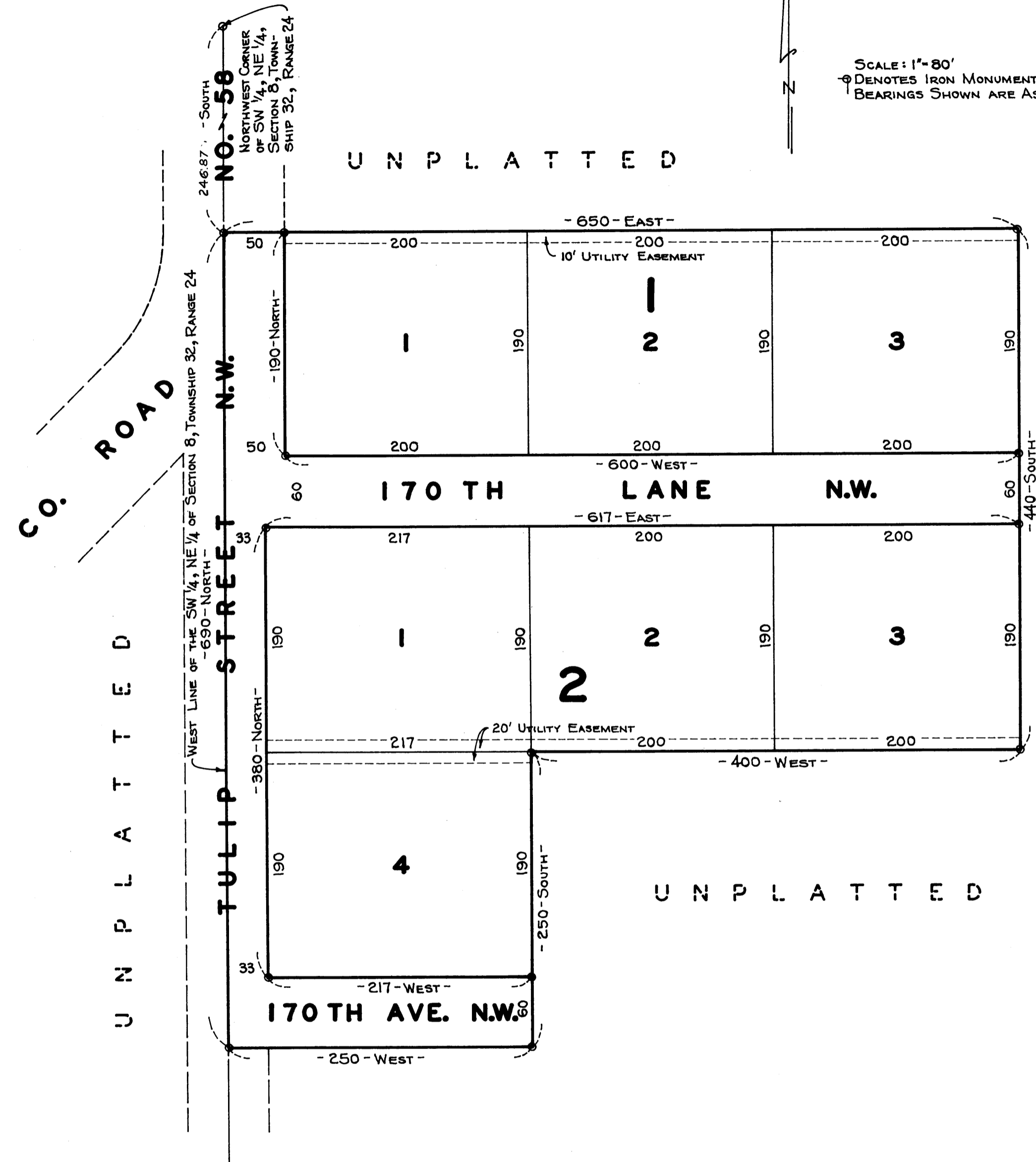


SYLVESTER ADDITION

TOWNSHIP OF GROW
ANOKA COUNTY, MINNESOTA



SCALE: 1"=80'
⊙ DENOTES IRON MONUMENT
BEARINGS SHOWN ARE ASSUMED

KNOW ALL MEN BY THESE PRESENTS: THAT WE, SYLVESTER BROS. DEVELOPMENT COMPANY, A MINNESOTA CORPORATION, OWNERS AND PROPRIETORS, OF THE FOLLOWING DESCRIBED PROPERTY SITUATE IN THE STATE OF MINNESOTA AND COUNTY OF ANOKA TO-WIT: THAT PART OF THE SOUTHWEST 1/4 OF THE NORTHEAST 1/4 OF SECTION 8, TOWNSHIP 32, RANGE 24 DESCRIBED AS FOLLOWS: COMMENCING AT A POINT ON THE WEST LINE OF SAID SOUTHWEST 1/4 OF THE NORTHEAST 1/4 DISTANT 246.87 FEET SOUTH FROM THE NORTHWEST CORNER OF SAID SOUTHWEST 1/4 OF THE NORTHEAST 1/4, SAID WEST LINE HAVING AN ASSUMED BEARING OF NORTH AND SOUTH; THENCE EAST ON A LINE HAVING A BEARING OF EAST AND WEST A DISTANCE OF 650 FEET; THENCE SOUTH ON A LINE HAVING A BEARING OF NORTH AND SOUTH A DISTANCE OF 440 FEET; THENCE WEST ON A LINE HAVING A BEARING OF EAST AND WEST A DISTANCE OF 400 FEET; THENCE SOUTH ON A LINE HAVING A BEARING OF NORTH AND SOUTH A DISTANCE OF 250 FEET; THENCE WEST ON A LINE HAVING A BEARING OF EAST AND WEST A DISTANCE OF 250 FEET TO THE WEST LINE OF SAID SOUTHWEST 1/4 OF THE NORTHEAST 1/4; THENCE NORTH ALONG SAID WEST LINE A DISTANCE OF 690 FEET TO THE POINT OF COMMENCEMENT.

HAVE CAUSED THE SAME TO BE SURVEYED AND PLATTED AS SYLVESTER ADDITION AND DO HEREBY DONATE AND DEDICATE TO THE PUBLIC FOR PUBLIC USE FOREVER THE STREET, LANE, AND AVENUE AS SHOWN ON THE ANNEXED PLAT. ALSO SUBJECT TO UTILITY EASEMENTS AS SHOWN ON THE ANNEXED PLAT.

IN WITNESS WHEREOF, SAID SYLVESTER BROS. DEVELOPMENT COMPANY HAS HEREUNTO CAUSED THESE PRESENTS TO BE SIGNED BY ITS PROPER OFFICERS AND ITS CORPORATE SEAL TO BE HEREUNTO AFFIXED ON THIS 18th DAY OF MAY A.D. 1965

IN THE PRESENCE OF:
Philip Hawthorn AND Gerald Swedeen
G. R. Hagan AND Douglas Herbold

SIGNED:
SYLVESTER BROS. DEVELOPMENT COMPANY
By Vernon P. Sylvester ITS PRESIDENT
By Eddie Sylvester ITS SECRETARY

STATE OF MINNESOTA) ss
COUNTY OF ANOKA)

ON THIS 18th DAY OF MAY A.D. 1965, BEFORE ME, A NOTARY PUBLIC WITHIN AND FOR SAID COUNTY AND STATE, PERSONALLY APPEARED EDDIE SYLVESTER AND VERNON P. SYLVESTER, TO ME PERSONALLY KNOWN, WHO BEING BY ME DULY SWORN DID SAY THAT THEY ARE THE SECRETARY AND PRESIDENT, RESPECTIVELY, OF SYLVESTER BROS. DEVELOPMENT COMPANY, THE CORPORATION NAMED IN THE FOREGOING INSTRUMENT; THAT THE SEAL AFFIXED TO SAID INSTRUMENT IS THE CORPORATE SEAL OF SAID CORPORATION; AND THAT SAID INSTRUMENT WAS SIGNED AND SEALED IN BEHALF OF SAID CORPORATION BY AUTHORITY OF ITS BOARD OF DIRECTORS AND SAID EDDIE SYLVESTER AND VERNON P. SYLVESTER ACKNOWLEDGE SAID INSTRUMENT TO BE THE FREE ACT AND DEED OF SAID CORPORATION.

DORETTA M. HOIUM
Notary Public, Anoka County, Minn.
My Commission Expires Sept. 30, 1969.

MY COMMISSION EXPIRES SEPT. 30, 1969

Doretta M. Hoium
NOTARY PUBLIC, ANOKA COUNTY, MINNESOTA

I HEREBY CERTIFY THAT I HAVE SURVEYED AND PLATTED THE LAND DESCRIBED IN THE DEDICATION ON THIS PLAT AS SYLVESTER ADDITION; THAT THIS PLAT IS A CORRECT REPRESENTATION OF SAID SURVEY; THAT ALL DISTANCES ARE CORRECTLY SHOWN ON SAID PLAT; THAT THE MONUMENTS FOR THE GUIDANCE OF FUTURE SURVEYS HAVE BEEN CORRECTLY PLACED IN THE GROUND AS SHOWN ON THE PLAT; THAT THE OUTSIDE BOUNDARIES OF THE LAND ARE CORRECTLY DESIGNATED ON SAID PLAT; AND THAT THERE ARE NO WET LANDS OR PUBLIC HIGHWAYS TO BE DESIGNATED OTHER THAN ARE SHOWN THEREON.

STATE OF MINNESOTA) ss
COUNTY OF ANOKA)

STATE ON THIS 10th DAY OF MAY A.D. 1965. ABOVE SURVEYOR'S CERTIFICATE SUBSCRIBED AND SWORN TO BEFORE ME, A NOTARY PUBLIC WITHIN AND FOR SAID COUNTY AND STATE.

KENNETH CAMPTON
Notary Public, Anoka County, Minn.
My Commission Expires July 22, 1970.

MY COMMISSION EXPIRES JULY 22, 1970

N. C. Hoium
REGISTERED LAND SURVEYOR-MINN. REG. NO. 4427

RECOMMENDED FOR APPROVAL THIS 25th DAY OF AUGUST A.D. 1965.

E. J. Lundbloom
ANOKA COUNTY HIGHWAY ENGINEER

APPROVED BY THE PLANNING AND ZONING COMMISSION FOR THE TOWN OF GROW AND BY THE TOWN BOARD OF GROW, THIS 11 DAY OF MAY A.D. 1965.

Kenneth Olson
CHAIRMAN
Earl O. Palm
CLERK

THIS PLAT WAS APPROVED AS TO FORM AND EXECUTION ON THIS 2nd DAY OF NOVEMBER A.D. 1966.

Robert C. Johnson
COUNTY ATTORNEY, ANOKA COUNTY, MINNESOTA

THIS PLAT WAS APPROVED AND ACCEPTED BY THE BOARD OF COUNTY COMMISSIONERS OF THE COUNTY OF ANOKA, STATE OF MINNESOTA, AT A REGULAR MEETING THEREOF HELD THIS 8th DAY OF JUNE A.D. 1965.

Mike E. O'Bannon
CHAIRMAN
Kenneth Campbell
COUNTY AUDITOR

CHECKED AND APPROVED THIS 8th DAY OF JUNE A.D. 1965.

Robert W. Anderson
COUNTY SURVEYOR, ANOKA COUNTY, MINNESOTA

OFFICE OF REGISTER OF DEEDS
STATE OF MINNESOTA, COUNTY OF ANOKA } ss

I hereby certify that the within instrument was filed in this office for record on the 22 day of NOV 1966 A.D. 1966 at 11 o'clock A.M., and was duly recorded in book 2 of Plats page 19.

Hertaude Shinn
Register of Deeds
By Margaret Russell Deputy

TAXES PAID

This 22 day of Nov 1966
Kenneth Campbell
Auditor, Anoka County, Minn.
By Douglas Herbold Deputy

I HEREBY CERTIFY THAT THE TAXES PAYABLE IN THE YEAR 1966 ON THE LANDS DESCRIBED WITHIN ARE PAID.
Robert G. Peterson
Anoka County Treasurer