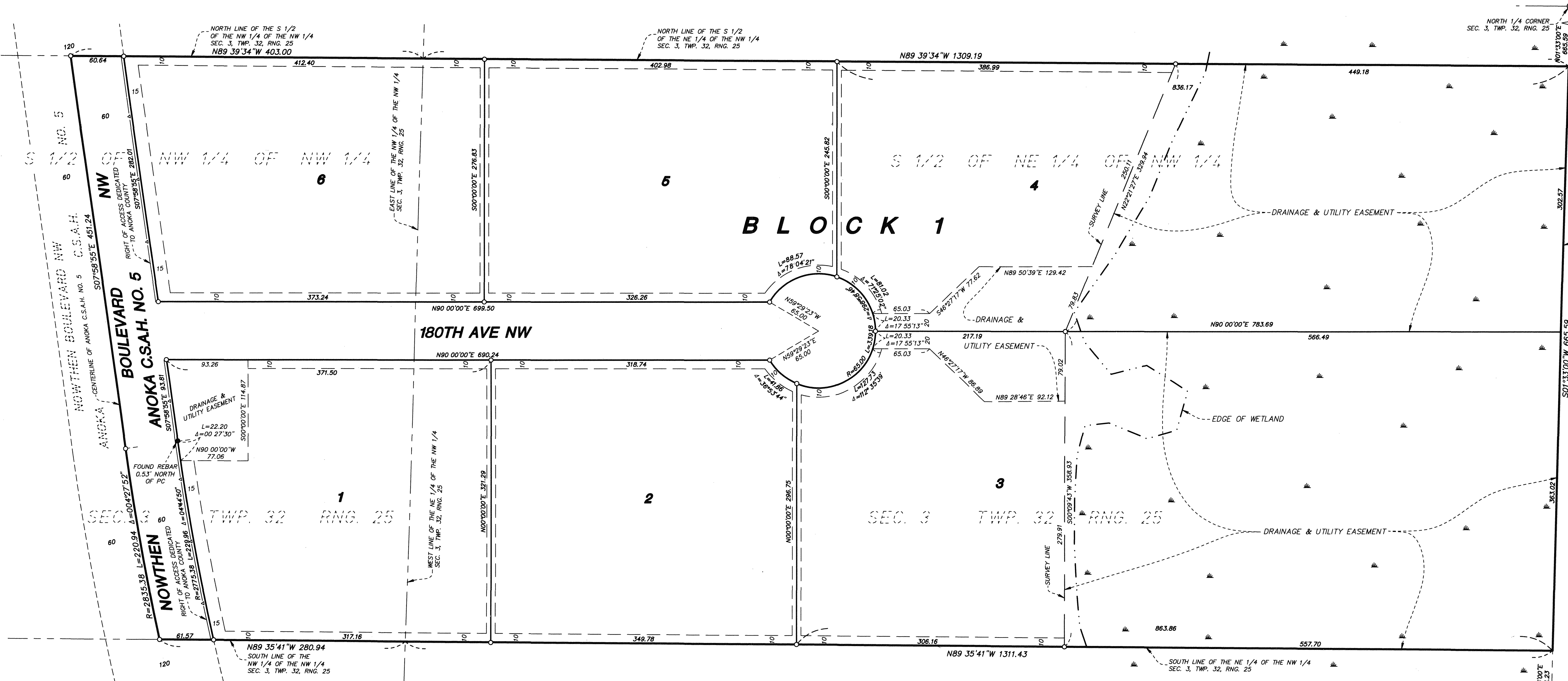


# TALL PINE RIDGE

Book 15 Abst Pg 1

CITY OF RAMSEY  
COUNTY OF ANOKA  
SEC. 3, T. 32, R. 25



KNOW ALL PERSONS BY THESE PRESENTS: That Gerald W. Davis and Jane E. Davis, husband and wife, owners of the following described property:

The South Half of the Northeast Quarter of the Northwest Quarter and that part of the South Half of the Northwest Quarter of the Northwest Quarter of Section 3, Township 32, Range 25, Anoka County, Minnesota, lying easterly of the center line of Anoka County State Aid Highway No. 5 (also known as Nowthen Boulevard NW) as now laid out.

Have caused the same to be surveyed and platted as TALL PINE RIDGE and do hereby dedicate to the public for public use the public ways and the drainage and utility easements as shown on this plat. Also dedicating to the County of Anoka the right of access onto County State Aid Highway No. 5 as shown on this plat.

In witness whereof said Gerald W. Davis and Jane E. Davis, husband and wife, have hereunto set their hands this 20th day of January, 2015.

Gerald W. Davis  
Gerald W. Davis

Jane E. Davis  
Jane E. Davis

State of Minnesota  
County of Anoka

This instrument was acknowledged before me on January 29, 2015 by Gerald W. Davis and Jane E. Davis, husband and wife.

JoAnn E. Shaw  
JoAnn E. Shaw  
Notary Public, Anoka County, Minnesota  
My commission expires 11/31/20

I, Kyle J. Roddy do hereby certify that this plat was prepared by me or under my direct supervision; that I am a duly Licensed Land Surveyor in the State of Minnesota; that this plat is a correct representation of the boundary survey; that all mathematical data and labels are correctly designated on this plat; that all monuments depicted on this plat have been, or will be correctly set within one year; that all water boundaries and wet lands, as defined in Minnesota Statutes, Section 505.01, Subd. 3, as of the date of this certificate are shown and labeled on this plat; and all public ways are shown and labeled on this plat.

Dated this 19th day of January, 2015

Kyle J. Roddy  
Kyle J. Roddy, Licensed Land Surveyor  
Minnesota License Number 42627

State of Minnesota  
County of Isanti

This instrument was acknowledged before me on January 19, 2015 by Kyle J. Roddy.

Christine S. Hanson  
Christine S. Hanson  
Notary Public, Isanti County, Minnesota  
My commission expires January 31, 2020

CITY COUNCIL, CITY OF RAMSEY, MINNESOTA

This plat of TALL PINE RIDGE was approved and accepted by the City Council of the City of Ramsey, Minnesota at a regular meeting thereof held this 20th day of September, 2014 and said plat is in compliance with the provisions of Minnesota Statutes, Section 505.03, Subd. 2.

By: [Signature] Mayor  
By: [Signature] City Clerk

ANOKA COUNTY SURVEYOR

I hereby certify that in accordance with Minnesota Statutes, Section 505.021, Subd. 11, this plat has been reviewed and approved this 23rd day of January, 2015.

Larry D. Holm by Charles F. Betgen, Deputy  
Larry D. Holm, Anoka County Surveyor

COUNTY AUDITOR/TREASURER

Pursuant to Minnesota Statutes, Section 505.021, Subd. 9, taxes payable in the year 2015 on the land hereinbefore described have been paid. Also, pursuant to Minnesota Statutes, Section 272.12, there are no delinquent taxes and transfer entered this 23rd day of January, 2015.

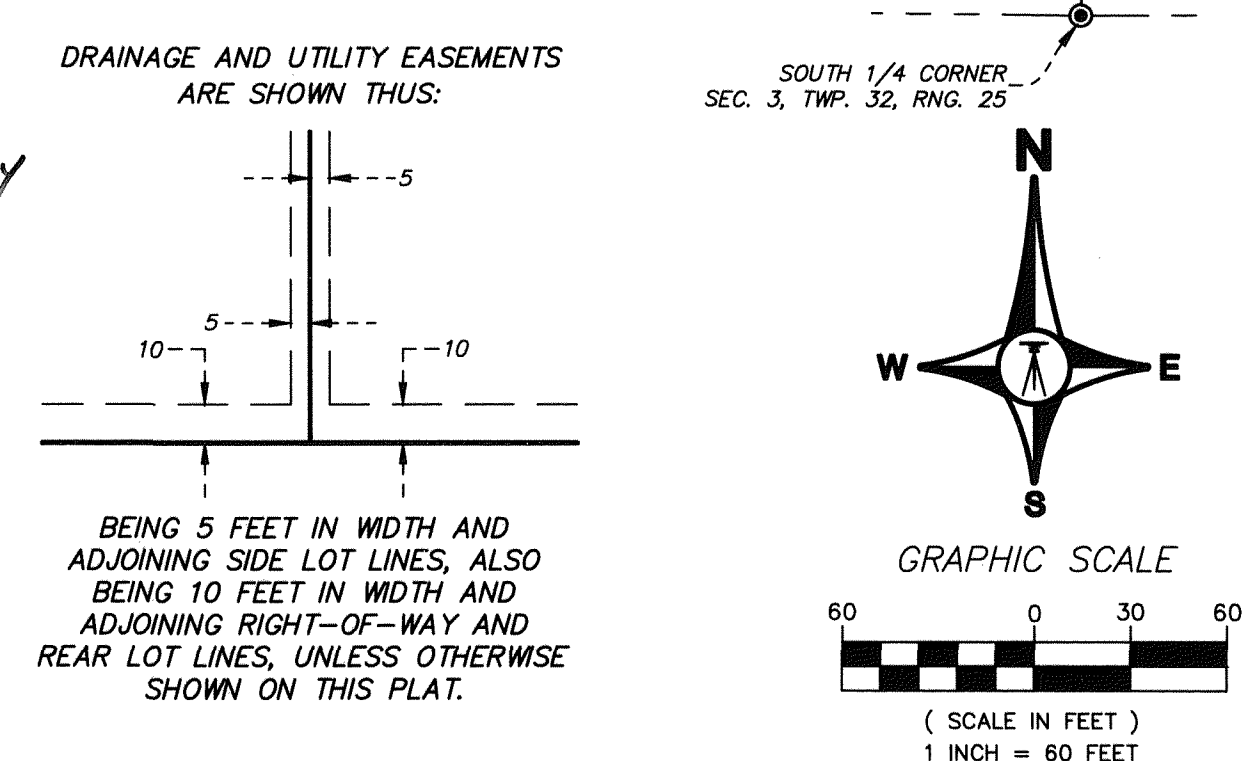
Jonell M. Sawyer  
Jonell M. Sawyer  
Property Tax Administrator  
By: [Signature] Deputy

COUNTY RECORDER/REGISTRAR OF TITLES

County of Anoka, State of Minnesota

I hereby certify that this plat of TALL PINE RIDGE, was filed in the office of the County Recorder/Registrar of Titles for public record on this 23rd day of January, 2015, at 2:12 o'clock P.M. and was duly recorded in Book 15 Page 1, as Document Number 2019031.003

Jonell M. Sawyer  
Jonell M. Sawyer  
County Recorder/Registrar of Titles  
By: [Signature] Deputy



**BEARING NOTE**  
FOR THE PURPOSES OF THIS PLAT, THE SOUTH LINE OF THE NORTHEAST QUARTER OF THE NORTHWEST QUARTER OF SECTION 3, TOWNSHIP 32, RANGE 25 IS ASSUMED TO BEAR NORTH 89 DEGREES 38 MINUTES 41 SECONDS WEST.

**LEGEND**

- DENOTES IRON PIPE MONUMENT FOUND
- DENOTES SET 1/2" IRON PIPE WITH CAP MARKED R.L.S. 42627
- ⊙ DENOTES ANOKA COUNTY MONUMENT

**WETLAND NOTE**  
THE EDGE OF WETLANDS SHOWN HEREON WERE DELINEATED BY KUJHAUG ENVIRONMENTAL COMPANY IN JUNE, 2014.

# 56