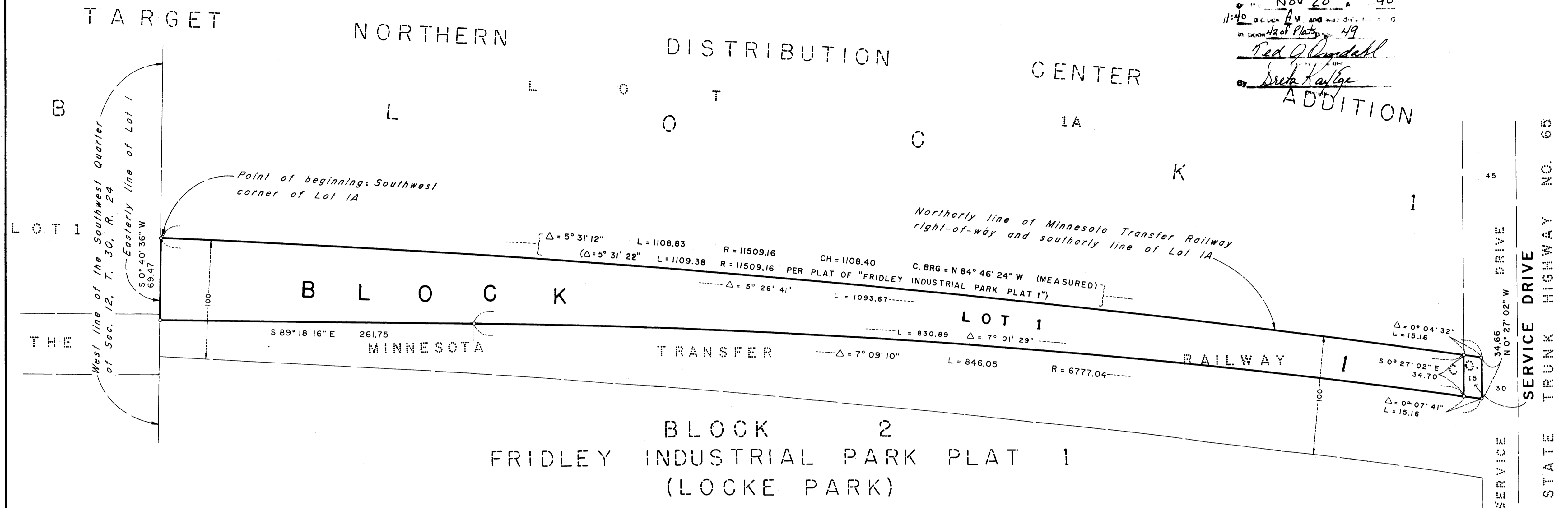


# TARGET NDC SOUTHEAST

City of Fridley  
Anoka County, MN

914752  
 OFFICE OF COUNTY REGISTER  
 STATE OF MINNESOTA  
 Nov 20 1990  
 11:40  
 Red J. Dandahl  
 Drew Kaffee



KNOW ALL PERSONS BY THESE PRESENTS: That Dayton Hudson Corporation, a Minnesota corporation, fee owner of the following described property situated in the State of Minnesota, County of Anoka, to-wit:

A tract in the Southwest Quarter of Section 12, Township 30, Range 24, Anoka County, Minnesota, being a part of the Minnesota Transfer Railway right-of-way and being more particularly described as follows:

Beginning at the southwest corner of Lot 1A, Block 1, Target Northern Distribution Center Addition, according to the plat thereof of record in said Anoka County, said point being on the west line of said Southwest Quarter of Section 12 and on the northerly line of said Railway right-of-way; thence along said west line, being also in part an easterly line of Lot 1, Block 1 of said Addition, South 0 degrees 40 minutes 36 seconds West, assumed basis of bearings, a distance of 69.47 feet; thence South 89 degrees 18 minutes 16 seconds East 261.75 feet to a point of curvature; thence along a tangential curve, concave southerly and having a radius of 6777.04 feet and a central angle of 7 degrees 09 minutes 10 seconds, an arc distance of 846.05 feet to a point on a line 30 feet westerly from and parallel to the westerly right-of-way of State Trunk Highway 65; thence along said 30-foot parallel line North 0 degrees 27 minutes 02 seconds West 34.66 feet to the northerly line of said Minnesota Transfer Railway right-of-way; thence along said northerly right-of-way line, being in part the southerly line of said Lot 1A, and along a nontangential curve, concave southerly and having a radius of 11,509.16 feet, a central angle of 5 degrees 31 minutes 12 seconds and a chord bearing of North 84 degrees 46 minutes 24 seconds West, an arc distance of 1108.83 feet to the point of beginning.

Has caused the same to be surveyed and platted as TARGET NDC SOUTHEAST, and does hereby donate and dedicate to the public for public use forever the thoroughfares as shown on this plat.

In witness whereof said Dayton Hudson Corporation has caused these presents to be signed by its proper officers and its corporate seal hereunto affixed this 5<sup>th</sup> day of November, 19 90.

Dayton Hudson Corporation  
 By Fred Hamacher, as Vice President. Attest William P. Hise as Assistant Secretary  
 Fred Hamacher

STATE OF MINNESOTA  
 COUNTY OF Hennepin  
 The foregoing instrument was acknowledged before me this 5<sup>th</sup> day of November, 19 90 by Fred Hamacher, as Vice President and William P. Hise, as Assistant Secretary of Dayton Hudson Corporation, on behalf of the corporation.



Diana A. Muller  
 Notary Public Hennepin County, Minnesota  
 My commission expires Dec. 15, 1994

I hereby certify that I have surveyed and platted the property described in this plat as TARGET NDC SOUTHEAST and that this plat is a correct representation of said survey; that all monuments have been correctly placed in the ground as shown on the plat; that all distances are correctly shown on the plat in feet and hundredths of a foot; that the outside boundary lines are correctly designated on the plat; and that there are no wetlands or public highways to be designated on the plat other than as shown thereon.

John V. Chaffee  
 John V. Chaffee, Land Surveyor  
 Minnesota Registration No. 15228

STATE OF MINNESOTA  
 COUNTY OF Hennepin

The foregoing instrument was acknowledged before me this 5<sup>th</sup> day of November, 19 90 by John V. Chaffee, Land Surveyor.

Diana A. Muller  
 Notary Public Hennepin County, Minnesota  
 My commission expires Dec. 15, 1994

The annexed plat of TARGET NDC SOUTHEAST was approved by the City Council of Fridley, Minnesota at a regular meeting thereof held this 5<sup>th</sup> day of November, 19 90. If applicable, the written comments and recommendations of the Commissioner of Transportation and the County Highway Engineer have been received by the City or the prescribed 30 day period has elapsed without receipt of such comments and recommendations, as provided by Minnesota Statutes Section 505.03, Subdivision 2.

By: William J. [unclear], Mayor

Attest: Shirley P. [unclear], City Clerk  
 CITY OF FRIDLEY  
 ANOKA COUNTY, MINN.

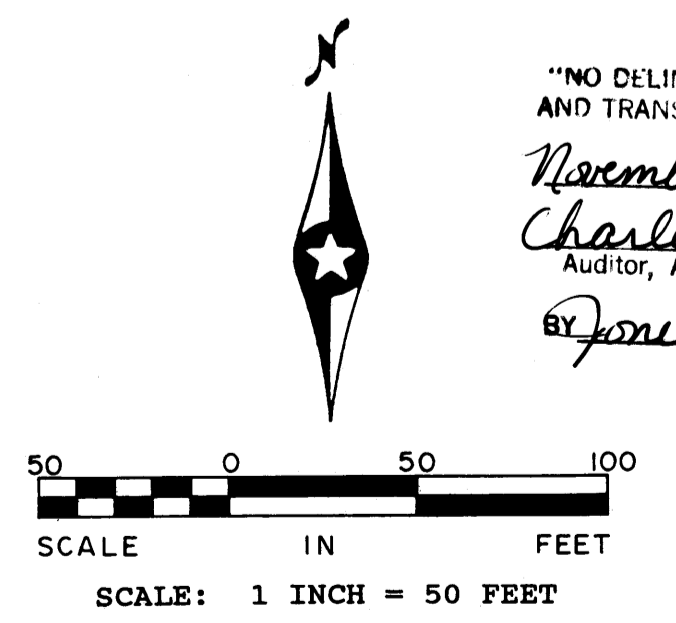
This plat has been checked and approved this 20<sup>th</sup> day of November, 19 90.

Mervyn D. Anderson, Anoka County Surveyor  
 by Larry D. [unclear], deputy

I HEREBY CERTIFY THAT THE TAXES PAYABLE IN THE YEAR 1990 ON THE LANDS DESCRIBED WITHIN ARE PAID  
Donald C. [unclear]  
 Anoka County Treasurer  
J. Henry [unclear], Deputy

FOR THE PURPOSES OF THIS PLAT, THE WEST LINE OF LOT 1A, BLOCK 1, TARGET NORTHERN DISTRIBUTION CENTER ADDITION (BEING ALSO THE WEST LINE OF THE SOUTHWEST 1/4 OF SEC. 12, T. 30, R. 24) IS ASSUMED TO BEAR S 0° 40' 36" W.

○ DENOTES IRON PIPE SET WITH A PLASTIC PLUG STAMPED R.L.S. NO. 15228



"NO DELINQUENT TAXES AND TRANSFER ENTRIES"  
 November 20, 1990  
Charles R. [unclear]  
 Auditor, Anoka County  
 BY Jonell M. [unclear], Deputy

