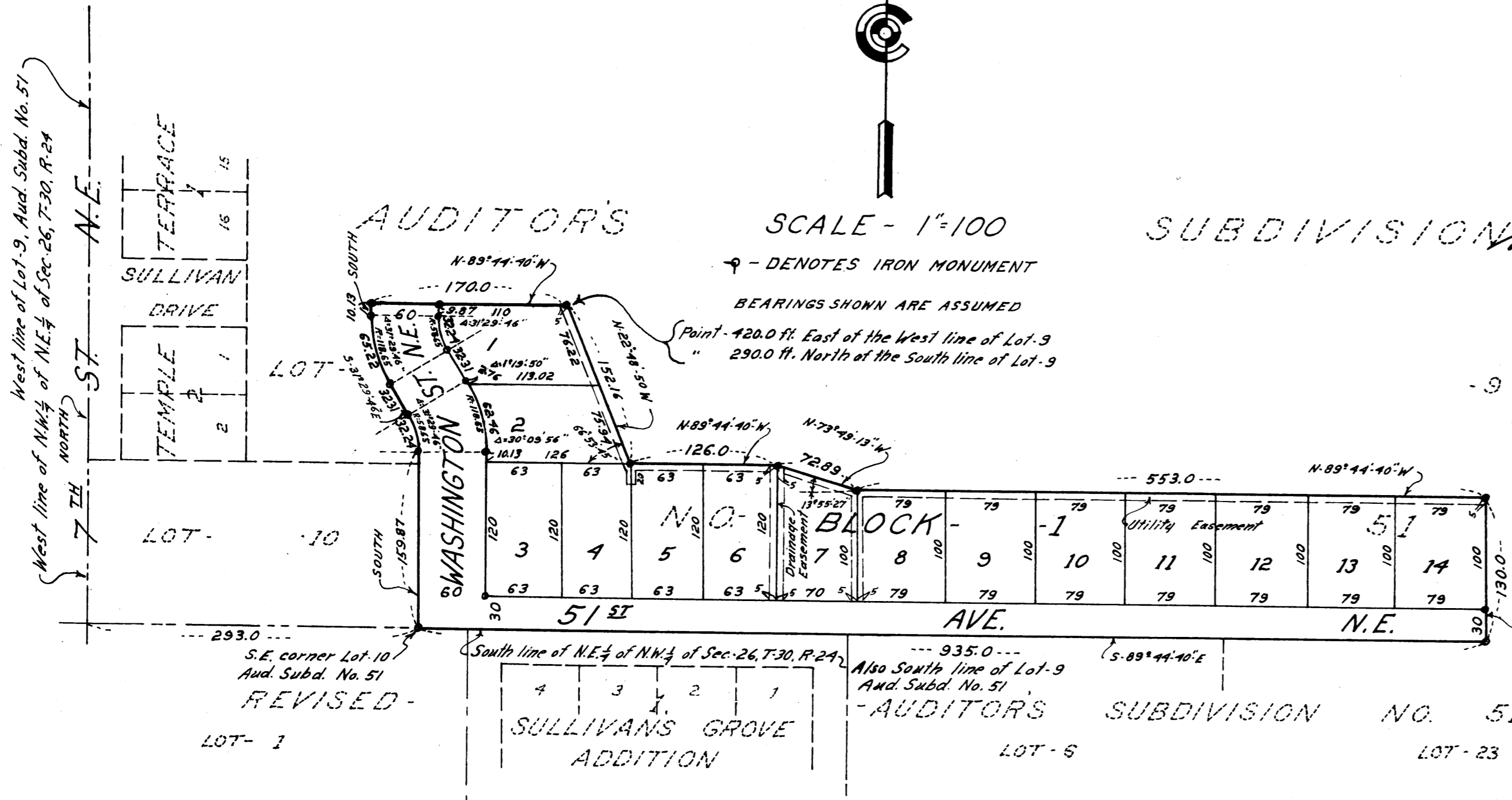


TEMPLE TERRACE PLAT 3

CITY OF COLUMBIA HEIGHTS
ANOKA COUNTY, MINNESOTA

CARTWRIGHT & OLSON
LAND SURVEYORS



KNOW ALL MEN BY THESE PRESENTS: THAT WE, JOHN H. GLOVER HOUSES, INC., A MINNESOTA CORPORATION, OWNERS AND PROPRIETORS OF THE FOLLOWING DESCRIBED PROPERTY SITUATE IN THE STATE OF MINNESOTA AND COUNTY OF ANOKA TO-WIT: THAT PART OF LOT 9, AUDITOR'S SUBDIVISION NUMBER 51, ACCORDING TO THE PLAT THEREOF ON FILE AND OF RECORD IN THE OFFICE OF THE REGISTER OF DEEDS, ANOKA COUNTY, MINNESOTA, DESCRIBED AS FOLLOWS: COMMENCING AT THE SOUTHEAST CORNER OF LOT 10, SAID AUDITOR'S SUBDIVISION NUMBER 51, SAID POINT BEING ON THE SOUTH LINE OF SAID LOT 9 AND 293 FEET EAST OF THE MOST WESTERLY LINE OF SAID LOT 9, EXTENDED SOUTHERLY; THENCE EAST ALONG THE SOUTH LINE OF SAID LOT 9 A DISTANCE OF 935.0 FEET; THENCE NORTH PARALLEL WITH THE WEST LINE OF SAID LOT 9 A DISTANCE OF 130 FEET; THENCE WEST PARALLEL WITH THE SOUTH LINE OF SAID LOT 9 A DISTANCE OF 553.0 FEET; THENCE DEFLECT TO THE RIGHT 13° 55' 27" FOR A DISTANCE OF 72.89 FEET; THENCE WEST PARALLEL WITH THE SOUTH LINE OF SAID LOT 9 A DISTANCE OF 126.0 FEET; THENCE DEFLECT TO THE RIGHT 66° 53' 45" FOR A DISTANCE OF 152.16 FEET, MORE OR LESS, TO A POINT DISTANT 290.00 FEET NORTH OF THE SOUTH LINE OF SAID LOT 9 AS MEASURED ON A LINE DRAWN PARALLEL WITH THE WEST LINE OF SAID LOT 9 AND DISTANT 420.00 FEET EAST OF THE WEST LINE OF SAID LOT 9, AS MEASURED ON A LINE DRAWN PARALLEL WITH THE SOUTH LINE OF SAID LOT 9; THENCE WEST PARALLEL WITH THE SOUTH LINE OF SAID LOT 9 A DISTANCE OF 170.0 FEET; THENCE SOUTH PARALLEL WITH THE WEST LINE OF SAID LOT 9 A DISTANCE OF 10.13 FEET; THENCE ON A TANGENTIAL CURVE TO THE LEFT HAVING A RADIUS OF 118.65 FEET A DISTANCE OF 65.22 FEET; THENCE SOUTHEASTERLY TANGENT TO SAID CURVE A DISTANCE OF 32.31 FEET; THENCE ON A TANGENTIAL CURVE TO THE RIGHT HAVING A RADIUS OF 58.65 FEET A DISTANCE OF 32.24 FEET; THENCE SOUTH TANGENT TO SAID CURVE TO THE POINT OF BEGINNING. HAVE CAUSED THE SAME TO BE SURVEYED AND PLATTED AS TEMPLE TERRACE PLAT 3, AND DO HEREBY DONATE AND DEDICATE TO THE PUBLIC FOR THE PUBLIC USE FOREVER THE STREET AND AVENUE AS SHOWN ON THE ANNEXED PLAT, ALSO SUBJECT TO UTILITY EASEMENTS AS SHOWN ON THE ANNEXED PLAT. IN WITNESS WHEREOF SAID JOHN H. GLOVER HOUSES, INC., HAS CAUSED THESE PRESENTS TO BE SIGNED BY ITS PROPER OFFICER AND ITS CORPORATE SEAL TO BE HEREUNTO AFFIXED THIS 29TH DAY OF OCTOBER A.D., 1958.

IN PRESENCE OF:

SIGNED:

SUBDIVISION Cartwright & Olson AND Olson

JOHN H. GLOVER HOUSES, INC.
BY John H. Glover ITS PRESIDENT
JOHN H. GLOVER

STATE OF MINNESOTA) SS
COUNTY OF HENNEPIN)

ON THIS 29TH DAY OF OCTOBER A.D. 1958, BEFORE ME A NOTARY PUBLIC WITHIN AND FOR SAID COUNTY AND STATE PERSONALLY APPEARED JOHN H. GLOVER, TO ME PERSONALLY KNOWN, WHO BEING BY ME DULY SWORN DID SAY THAT HE IS THE PRESIDENT OF JOHN H. GLOVER HOUSES, INC., THE CORPORATION NAMED IN THE FOREGOING INSTRUMENT, THAT THE SEAL AFFIXED TO SAID INSTRUMENT IS THE CORPORATE SEAL OF SAID CORPORATION AND THAT SAID INSTRUMENT WAS SIGNED AND SEALED IN BEHALF OF SAID CORPORATION BY AUTHORITY OF ITS BOARD OF DIRECTORS AND SAID JOHN H. GLOVER ACKNOWLEDGES SAID INSTRUMENT TO BE THE FREE ACT AND DEED OF SAID CORPORATION.

Norman C. Houm
NOTARY PUBLIC, HENNEPIN COUNTY, MINNESOTA
MY COMMISSION EXPIRES Oct. 14, 1961

I HEREBY CERTIFY THAT I HAVE SURVEYED AND PLATTED THE PROPERTY DESCRIBED ON THIS PLAT AS TEMPLE TERRACE PLAT 3, THAT THIS PLAT IS A CORRECT REPRESENTATION OF SAID SURVEY; THAT ALL DISTANCES ARE CORRECTLY SHOWN ON THE PLAT IN FEET AND DECIMALS OF A FOOT; THAT THE MONUMENTS FOR THE GUIDANCE OF FUTURE SURVEYS HAVE BEEN CORRECTLY PLACED IN THE GROUND AS SHOWN ON THE PLAT; THAT THE OUTSIDE BOUNDARY LINES ARE CORRECTLY DESIGNATED ON THE PLAT, THAT THE TOPOGRAPHY OF THE LAND IS CORRECTLY SHOWN ON THE PLAT, AND THAT THERE ARE NO WET LANDS OR PUBLIC HIGHWAYS TO BE DESIGNATED ON SAID PLAT OTHER THAN SHOWN THEREON.

Shawnee Cartwright
REGISTERED LAND SURVEYOR-MINNESOTA REG. NO. 1983

STATE OF MINNESOTA) SS
COUNTY OF HENNEPIN)

ABOVE CERTIFICATE SUBSCRIBED AND SWORN TO BEFORE ME A NOTARY PUBLIC WITHIN AND FOR SAID COUNTY AND STATE THIS 29TH DAY OF OCTOBER A.D. 1958.

Norman C. Houm
NOTARY PUBLIC, HENNEPIN COUNTY, MINNESOTA
MY COMMISSION EXPIRES Oct. 14, 1961

WE HEREBY CERTIFY THAT THE CITY COUNCIL OF THE CITY OF COLUMBIA HEIGHTS, ANOKA COUNTY, MINNESOTA, DULY ACCEPTED AND APPROVED THE ANNEXED PLAT OF TEMPLE TERRACE PLAT 3 AT A REGULAR MEETING THEREOF HELD THIS 24TH DAY OF November A.D. 1958.

CITY OF COLUMBIA HEIGHTS, ANOKA COUNTY, MINNESOTA
BY [Signature] ITS MAYOR
BY [Signature] ITS CITY CLERK

THIS PLAT WAS APPROVED AS TO FORM AND EXECUTION ON THIS 24th DAY OF January A.D. 1958.

Stewart J. Johnson
CITY ATTORNEY, COLUMBIA HEIGHTS, MINNESOTA

HEREBY CERTIFY THAT TAXES FOR THE YEAR 1958
ON THE LANDS DESCRIBED WITHIN ARE PAID
Walter J. Powers
County Treasurer

TAXES PAID
This 15 day of July 1958
Kenneth W. Campbell
Auditor, Anoka County, Minn.
By [Signature] Deputy

Office of REGISTRAR OF TITLES
STATE OF MINNESOTA
COUNTY OF ANOKA
I hereby certify that the within instrument
was filed in this office on the _____ day of
JUL 16 1958 A. D. 1958 at 9 o'clock A. M.
Arthur J. Schinner Registrar of Titles
By Ellen Coetzler DEPUTY REGISTRAR OF TITLES