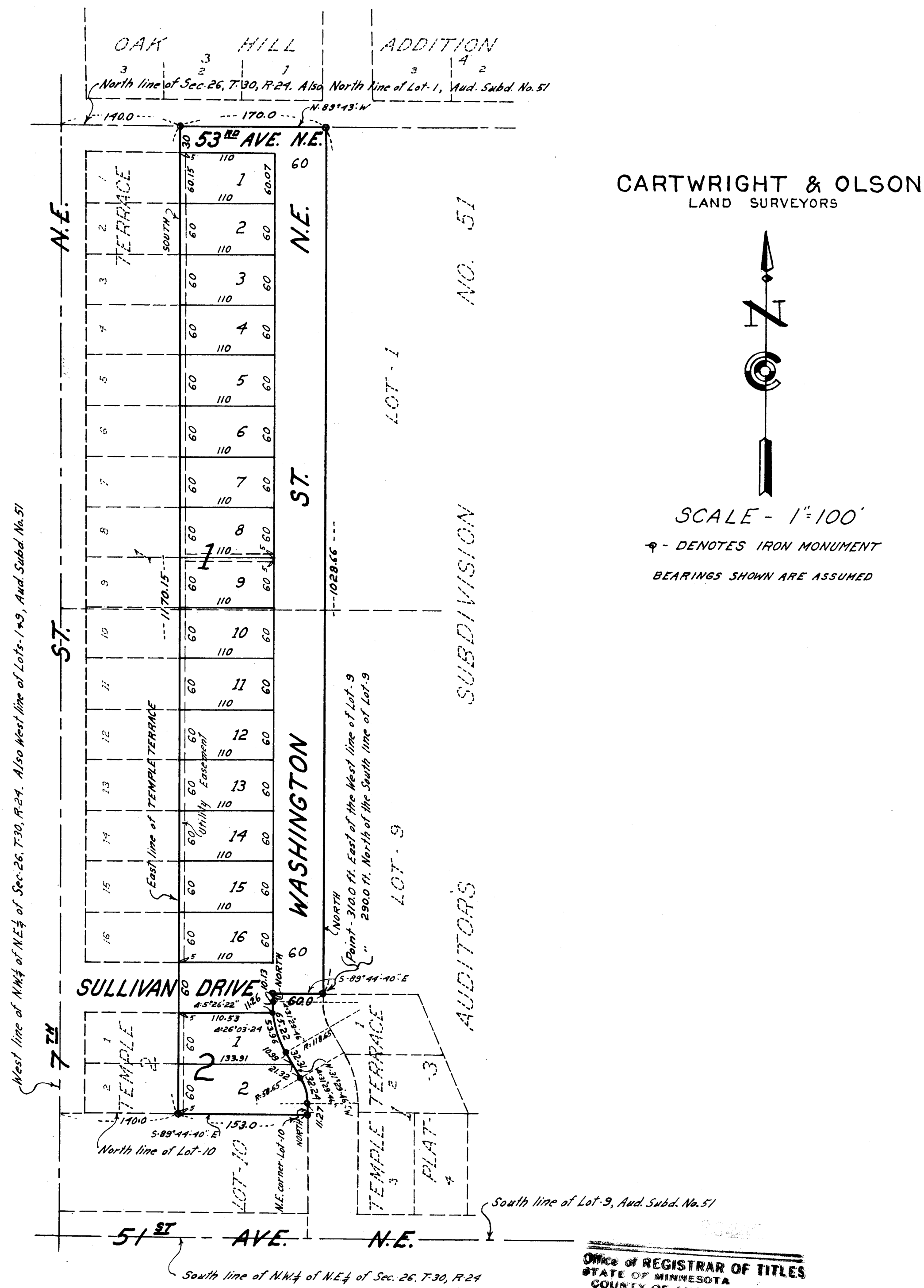


TEMPLE TERRACE PLAT 4

CITY OF COLUMBIA HEIGHTS
ANOKA COUNTY, MINNESOTA



KNOW ALL MEN BY THESE PRESENTS: THAT WE, JOHN H. GLOVER HOUSES, INC., A MINNESOTA CORPORATION, OWNERS AND PROPRIETORS OF THE FOLLOWING DESCRIBED PROPERTY SITUATE IN THE STATE OF MINNESOTA AND COUNTY OF ANOKA TO-WIT: THAT PART OF LOTS 1 AND 9, AUDITOR'S SUBDIVISION NUMBER 51, ACCORDING TO THE PLAT THEREOF ON FILE AND OF RECORD IN THE OFFICE OF THE REGISTER OF DEEDS, ANOKA COUNTY, MINNESOTA, DESCRIBED AS FOLLOWS: COMMENCING AT A POINT ON THE NORTH LINE OF SAID LOT 1, DISTANT 140 FEET EAST FROM THE NORTHWEST CORNER OF SAID LOT 1; THENCE EAST ON THE NORTH LINE OF SAID LOT 1 A DISTANCE OF 170.0 FEET; THENCE SOUTH PARALLEL WITH THE WEST LINE OF SAID LOTS 1 AND 9 TO A POINT DISTANT 290.00 FEET NORTH OF THE SOUTH LINE OF SAID LOT 9 AS MEASURED ON A LINE DRAWN PARALLEL WITH THE WEST LINE OF SAID LOT 9 AND DISTANT 310 FEET EAST OF THE WEST LINE OF SAID LOT 9 AS MEASURED ON A LINE DRAWN PARALLEL WITH THE SOUTH LINE OF SAID LOT 9; THENCE WEST PARALLEL WITH THE SOUTH LINE OF SAID LOT 9 A DISTANCE OF 60 FEET; THENCE SOUTH PARALLEL WITH THE WEST LINE OF SAID LOT 9 A DISTANCE OF 10.13 FEET; THENCE ON A TANGENTIAL CURVE TO THE LEFT HAVING A RADIUS OF 118.65 FEET A DISTANCE OF 65.22 FEET; THENCE SOUTHEASTERLY TANGENT TO SAID CURVE A DISTANCE OF 32.31 FEET; THENCE ON A TANGENTIAL CURVE TO THE RIGHT HAVING A RADIUS OF 58.65 FEET A DISTANCE OF 32.24 FEET; THENCE SOUTH TANGENT TO SAID CURVE TO THE NORTHEAST CORNER OF LOT 10, SAID AUDITOR'S SUBDIVISION NO. 51; THENCE WEST ALONG THE LINE BETWEEN SAID LOTS 9 AND 10 TO A POINT DISTANT 140 FEET EAST OF THE WEST LINE OF SAID LOT 9; THENCE NORTH PARALLEL WITH THE WEST LINE OF SAID LOTS 9 AND 1 TO THE POINT OF BEGINNING. HAVE CAUSED THE SAME TO BE SURVEYED AND PLATTED AS TEMPLE TERRACE PLAT 4, AND DO HEREBY DONATE AND DEDICATE TO THE PUBLIC FOR THE PUBLIC USE FOREVER THE STREET, DRIVE AND AVENUE AS SHOWN ON THE ANNEXED PLAT, ALSO SUBJECT TO UTILITY EASEMENTS AS SHOWN ON THE ANNEXED PLAT. IN WITNESS WHEREOF SAID JOHN H. GLOVER HOUSES, INC., HAS CAUSED THESE PRESENTS TO BE SIGNED BY ITS PROPER OFFICER AND ITS CORPORATE SEAL TO BE HEREUNTO AFFIXED THIS 29TH DAY OF OCTOBER A.D., 1958.

IN PRESENCE OF:

Harry C. Cartwright AND *Carl Jones*

SIGNED
 JOHN H. GLOVER HOUSES, INC.
 BY *John H. Glover* ITS PRESIDENT
 JOHN H. GLOVER

STATE OF MINNESOTA)ss
COUNTY OF HENNEPIN)

ON THIS 29TH DAY OF OCTOBER A.D. 1958, BEFORE ME A NOTARY PUBLIC WITHIN AND FOR SAID COUNTY AND STATE PERSONALLY APPEARED JOHN H. GLOVER, TO ME PERSONALLY KNOWN, WHO BEING BY ME DULY SWORN DID SAY THAT HE IS THE PRESIDENT OF JOHN H. GLOVER HOUSES, INC., THE CORPORATION NAMED IN THE FOREGOING INSTRUMENT, THAT THE SEAL AFFIXED TO SAID INSTRUMENT IS THE CORPORATE SEAL OF SAID CORPORATION AND THAT SAID INSTRUMENT WAS SIGNED AND SEALED IN BEHALF OF SAID CORPORATION BY AUTHORITY OF ITS BOARD OF DIRECTORS AND SAID JOHN H. GLOVER ACKNOWLEDGES SAID INSTRUMENT TO BE THE FREE ACT AND DEED OF SAID CORPORATION.

Norman C. Hoium
 NOTARY PUBLIC, HENNEPIN COUNTY, MINNESOTA
 NORMAN C. HOIUM
 My Commission Expires Oct. 14, 1961.

I HEREBY CERTIFY THAT I HAVE SURVEYED AND PLATTED THE PROPERTY DESCRIBED ON THIS PLAT AS TEMPLE TERRACE PLAT 4, THAT THIS PLAT IS A CORRECT REPRESENTATION OF SAID SURVEY; THAT ALL DISTANCES ARE CORRECTLY SHOWN ON THE PLAT IN FEET AND DECIMALS OF A FOOT; THAT THE MONUMENTS FOR THE GUIDANCE OF FUTURE SURVEYS HAVE BEEN CORRECTLY PLACED IN THE GROUND AS SHOWN ON THE PLAT; THAT THE OUTSIDE BOUNDARY LINES ARE CORRECTLY DESIGNATED ON THE PLAT, THAT THE TOPOGRAPHY OF THE LAND IS CORRECTLY SHOWN ON THE PLAT AND THAT THERE ARE NO WET LANDS OR PUBLIC HIGHWAYS TO BE DESIGNATED ON SAID PLAT OTHER THAN SHOWN THEREON.

Harry C. Cartwright
 REGISTERED LAND SURVEYOR-MINNESOTA REG. NO. 1983

STATE OF MINNESOTA)ss
COUNTY OF HENNEPIN)

ABOVE CERTIFICATE SUBSCRIBED AND SWORN TO BEFORE ME A NOTARY PUBLIC WITHIN AND FOR SAID COUNTY AND STATE THIS 29TH DAY OF OCTOBER A.D. 1958.

Norman C. Hoium
 NOTARY PUBLIC, HENNEPIN COUNTY, MINNESOTA
 NORMAN C. HOIUM
 My Commission Expires Oct. 14, 1961.

WE HEREBY CERTIFY THAT THE CITY COUNCIL OF THE CITY OF COLUMBIA HEIGHTS, ANOKA COUNTY, MINNESOTA, DULY ACCEPTED AND APPROVED THE ANNEXED PLAT OF TEMPLE TERRACE PLAT 4 AT A REGULAR MEETING THEREOF HELD THIS 24TH DAY OF November A.D., 1958.

CITY OF COLUMBIA HEIGHTS, ANOKA COUNTY, MINNESOTA
 BY *Carl W. Johnson* ITS MAYOR
 BY *Josephine E. Johnson* ITS CITY CLERK

THIS PLAT APPROVED AS TO FORM AND EXECUTION ON THIS 24TH DAY OF January A.D. 1958.

Stewart S. Hallgren
 CITY ATTORNEY, COLUMBIA HEIGHTS, MINNESOTA

Office of REGISTRAR OF TITLES
 STATE OF MINNESOTA
 COUNTY OF ANOKA
 I hereby certify that the within instrument was filed in this office on the 15 day of July 1959 A.D. 1959 at 2 o'clock P.M.
Herbald A. Skinner Registrar of Titles
Ellen Bottcher DEPUTY REGISTRAR OF TITLES

TAXES PAID

This 15 day of July 1959
Kenneth W. Campbell
 Auditor, Anoka County, Minn.
 By *Julia E. Ruge* Deputy

I HEREBY CERTIFY THAT TAXES FOR THE YEAR 1958 ON THE UNDEVELOPED LANDS WITHIN ARE PAID
Walter S. Bowser
 County Treasurer