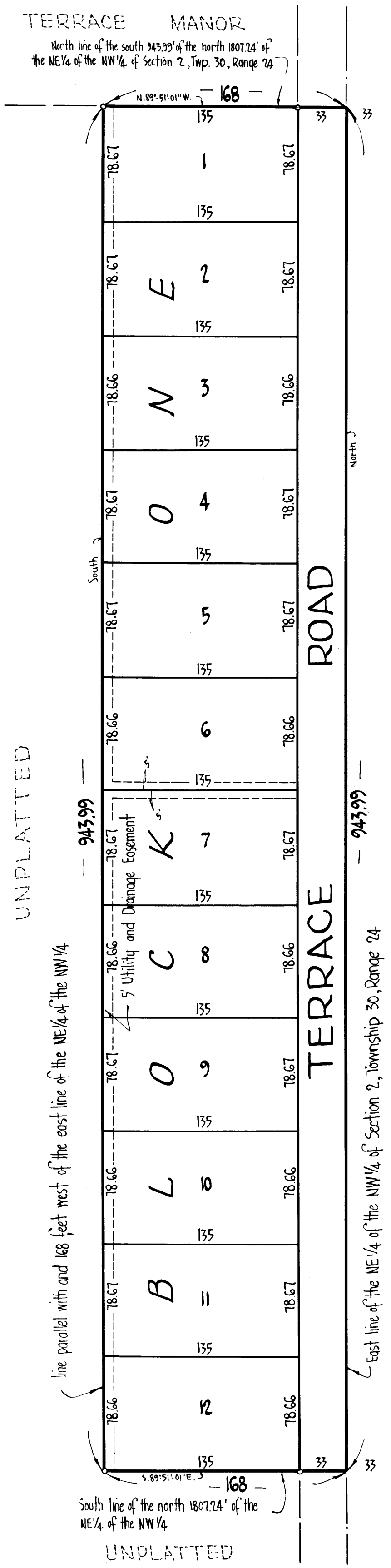


TERRACE MANOR 2nd

VILLAGE of SPRING LAKE PARK COUNTY of ANOKA



o Denotes Iron Monument
Bearings are assumed



A SUBDIVISION OF THE NE 1/4

JULIEN'S ADDITION

A SUBDIVISION OF THE NE 1/4

KNOW ALL MEN BY THESE PRESENTS: That Winfred E. Albrecht and Evelyn M. Albrecht, his wife, and that Edwin G. Albrecht and Lois H. Albrecht, his wife, owners and proprietors of the following described property situate in the State of Minnesota and County of Anoka, to-wit: The East 168 feet of the South 943.99 feet of the North 1807.24 feet of the Northeast 1/4 of the Northwest 1/4 of Section 2-Township 30-Range 24; have caused the same to be surveyed and platted as TERRACE MANOR 2nd, and do hereby donate and dedicate to the public for public use forever the Road and also the Utility and Drainage Easements as shown on the annexed plat. In witness whereof said Winfred E. Albrecht and Evelyn M. Albrecht, his wife, and also Edwin G. Albrecht and Lois H. Albrecht, his wife, have hereunto set their hands and seals this 20th day of October A.D. 1961.

In Presence of: Thomas E. Cooper Signed by: Winfred E. Albrecht (Seal)
Samuel D. Dalbey As to Winfred E. Albrecht and Evelyn M. Albrecht
Evelyn M. Albrecht (Seal)
 In Presence of: Thomas E. Cooper Signed by: Edwin G. Albrecht (Seal)
Samuel D. Dalbey As to Edwin G. Albrecht and Lois H. Albrecht
Lois H. Albrecht (Seal)

State of Minnesota }
 County of Ramsey } On this 20 day of October A.D. 1961, before me a Notary Public, within and for said County and State personally appeared Winfred E. Albrecht and Evelyn M. Albrecht, his wife, and also Edwin G. Albrecht and Lois H. Albrecht, his wife, to me known to be the persons described in and who executed the foregoing instrument and that they acknowledged that they executed the same as their own free act and deed.

Robert J. Bludow
 Notary Public, Ramsey County, Minnesota
 My Commission Expires July 27, 1965

I hereby certify that I have surveyed and platted the property described on this plat as TERRACE MANOR 2nd, that this plat is a correct representation of said survey, that all distances are correctly shown on the plat in feet and decimals of a foot; that the monuments for guidance of future surveys have been correctly placed in the ground as shown on said plat, that the outside boundaries of the land are correctly designated on said plat, and that there are no wet lands or public highways to be designated on said plat other than as shown thereon.

E. A. Rathbun
 Surveyor - Minnesota Registration No. 3795

State of Minnesota }
 County of Hennepin } Above certificate subscribed and sworn to before me, a Notary Public within and for said County and State on this 20th day of October A.D. 1961.

Warren O. Olson
 Notary Public, Hennepin County, Minnesota
 My Commission Expires July 17, 1967

We hereby certify that the Village of Spring Lake Park's Council, Anoka County, Minnesota, duly accepted and approved the annexed plat of TERRACE MANOR 2nd, at a regular meeting thereof held this 9th day of October, 1961 A.D. 1961.

VILLAGE of SPRING LAKE PARK, ANOKA COUNTY, MINN.
 by Nido C. T. ... Mayor
 by John M. Conde Clerk
Will J. ... Village City

Checked and approved this 28th day of December A.D. 1961.
Roland W. Anderson
 Anoka County Surveyor

OFFICE OF REGISTER OF DEEDS
 STATE OF MINNESOTA, COUNTY OF ANOKA }
 I hereby certify that the within instrument was filed in this office for record on the 20th day of October A.D. 1961 at 1:00 P.M. and was duly recorded on book "V" of plate 17.

I HEREBY CERTIFY THAT TAXES FOR THE YEAR 1960 ON THE LANDS DESCRIBED WITHIN ARE PAID
Stacia D. Rowan County Treasurer
Deputy

TAXES PAID
 This 20th day of Dec, 1961
Herbert Campbell Auditor, Anoka County, Minn.
Richard J. ... Deputy

Suburban Engineering, Inc.
 Engineers and Surveyors