

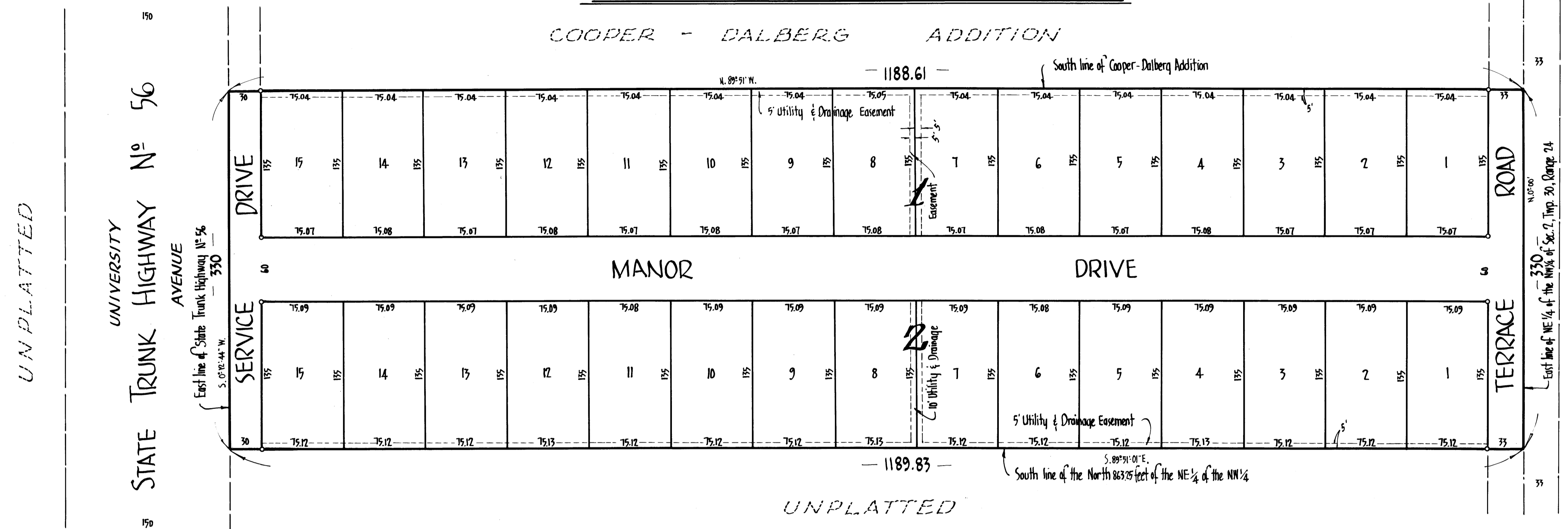
224739
 OFFICE OF REGISTER OF DEEDS
 STATE OF MINNESOTA, COUNTY OF ANOKA } SS
 I hereby certify that the within instrument was filed in this office for record in the day of JUL 21 1961 at 2 o'clock P.M. and was duly recorded in book 22 of Plate 2 page 22
 By *Margaret Russell* Deputy
 Registrar of Deeds

Suburban Engineering, Inc.
 Engineers & Surveyors

TERRACE MANOR

VILLAGE of SPRING LAKE PARK, COUNTY of ANOKA

Bearings are assumed Scale 1"=60' May, 1961



UNPLATTED

A SUBDIVISION OF THE NE 1/4

KNOW ALL MEN BY THESE PRESENTS: that Winfred E. Albrecht and Evelyn M. Albrecht, his wife, and that Edwin G. Albrecht and Lois H. Albrecht, his wife, owners and proprietors of the following described property situate in the State of Minnesota and County of Anoka, to-wit: All that part of the North 863.25 feet of the NE 1/4 of the NW 1/4 of Section 2- Township 30- Range 24- lying East of State Trunk Highway No 56 and lying South of Coopers-Dalberg Addition, have caused the same to be surveyed and platted as TERRACE MANOR, and do hereby donate and dedicate to the public for public use forever the Drives and Road, and also the Utility and Drainage Easements as shown on the annexed plat.
 In witness whereof said Winfred E. Albrecht and Evelyn M. Albrecht, his wife, and also Edwin G. Albrecht and Lois H. Albrecht, his wife, have hereunto set their hands and seals this 20 day of July A.D. 1961.

In Presence of *Thomas E. Copley* } As to Winfred E. Albrecht and Evelyn M. Albrecht
Evelyn M. Albrecht } Signed by *Winfred E. Albrecht* (Seal)
Edwin G. Albrecht } As to Edwin G. Albrecht and Lois H. Albrecht
Lois H. Albrecht } Signed by *Edwin G. Albrecht* (Seal)
Lois H. Albrecht } Signed by *Lois H. Albrecht* (Seal)

State of Minnesota }
 County of Anoka } On this 20th day of July A.D. 1961, before me, a Notary Public, within and for said County and State personally appeared Winfred E. Albrecht and Evelyn M. Albrecht, his wife, and Edwin G. Albrecht and Lois H. Albrecht, his wife, to me known to be the persons described in and who executed the foregoing instrument and that they acknowledged that they executed the same as their own free act and deed.

I hereby certify that I have surveyed and platted the property described on this plat as TERRACE MANOR, that this plat is a correct representation of said survey, that all distances are correctly shown on the plat in feet and decimals of a foot, that the monuments for guidance of future surveys have been correctly placed in the ground as shown on said plat, that the outside boundaries of the land are correctly designated on said plat, and that there are no wet lands or public highways to be designated on said plat other than as shown thereon.

TRANSFER ENTERED
 July 21 1961
Kenneth W. Campbell
 Auditor, Anoka County
 By *Julie E. Sage* Deputy

I HEREBY CERTIFY THAT TAXES FOR THE YEAR 1960 ON THE LANDS DESCRIBED WITHIN ARE PAID
Robert Brown
 County Treasurer

Approved as to execution and form on this 18th day of July A.D. 1961.
William J. Allen
 Village Attorney, Village of Spring Lake Park

State of Minnesota } Above certificate subscribed and sworn to before me, a Notary Public within and for County of Hennepin } said County and State on this 1st day of May A.D. 1961.

We hereby certify that the Village of Spring Lake Park's Council, Anoka County, Minnesota, duly accepted and approved the annexed plat of TERRACE MANOR, at a regular meeting thereof held this 22nd day of May A.D. 1961.
 by *Paul C. Schroder* Mayor
 by *John M. Conde* Clerk

Charles E. Larson
 Notary Public, Anoka County, Minnesota
 My Commission Expires August 1, 1965

E. A. Rathbun
 Surveyor - Minnesota Registration No 3195

Warren O. Olson
 Notary Public, Hennepin County, Minnesota
 My Commission Expires July 12, 1960

Checked and approved this 21 day of July A.D. 1961.
Paul W. Anderson by Bill Lyons
 Anoka County Surveyor