

THE LAKES OF RADISSON FIFTEENTH ADDITION

OFFICIAL PLAT

CITY OF BLAINE
 COUNTY OF ANOKA
 SEC. 10, T. 31, R. 23
 Book 67 of Abst Page 22

KNOW ALL MEN BY THESE PRESENTS: That Hans Hagen Homes, Inc. a Minnesota corporation, owner of the following described property situated in the County of Anoka, State of Minnesota, to wit:

Outlots A, B and C, THE LAKES OF RADISSON FOURTH ADDITION.

Has caused the same to be surveyed and platted as THE LAKES OF RADISSON FIFTEENTH ADDITION and does hereby donate and dedicate to the public for public use forever the easements for drainage and utility purposes only. In witness whereof said Hans Hagen Homes, Inc., a Minnesota corporation, has caused these presents to be signed by its proper officer this 13th day of April, 2004.

HANS HAGEN HOMES, INC.

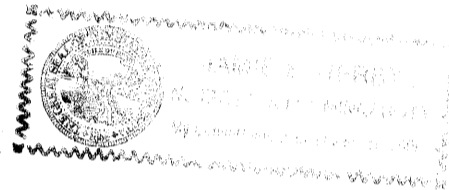
[Signature]
 Daniel A. Mosow, Corporate Secretary

I HEREBY CERTIFY THAT THE DELINQUENT AND DELINQUENT TAXES ON THE LANDS DESCRIBED WITHIN ARE PAID, AND THE TRANSFER IS ENTERED
May 11, 2004
 MAUREEN J. DEVINE
 PROPERTY TAX ADMINISTRATOR
 BY *[Signature]*
 DEPUTY PROPERTY TAX ADMINISTRATOR

1921510
 COUNTY RECORDER
 STATE OF MINNESOTA, COUNTY OF ANOKA
 I hereby certify that the within instrument was filed in the
 on the 11 day of May A.D., 2004
 at 3 o'clock P.M., and was duly recorded
 in Book 67, page 22
[Signature]
 County Recorder
 KHJ

STATE OF MINNESOTA
 COUNTY OF ANOKA

The foregoing instrument was acknowledged before me this 13th day of April, 2004 by Daniel A. Mosow, as corporate secretary of Hans Hagen Homes, Inc., a Minnesota corporation, on behalf of said corporation.



[Signature]
 Notary Public, Hennepin County, Minnesota
 My Commission Expires January 31, 2005

I hereby certify that I have surveyed and platted the property described on this plat as THE LAKES OF RADISSON FIFTEENTH ADDITION; that this plat is a correct representation of the survey; that all distances are correctly shown on the plat in feet and hundredths of a foot; that all monuments have been correctly placed in the ground as shown or will be placed as required by the local governmental unit; that the outside boundary lines are correctly designated on the plat; and that there are no wetlands, in accordance with section 505.02 Subdivision 1, or public highways to be designated other than as shown.

[Signature]
 Terrence E. Rothenbacher, Land Surveyor
 Minnesota License Number 20595

STATE OF MINNESOTA
 COUNTY OF ANOKA

The foregoing instrument was acknowledged before me this 9th day of April, 2004, by Terrence E. Rothenbacher, Land Surveyor, Minnesota License No. 20595.

CHRISTOPHER E SHARP
 NOTARY PUBLIC
 MY COMM. EXP. 01/31/2005

[Signature]
 Notary Public, ANOKA County, Minnesota
 My Commission Expires January 31, 2005

BLAINE, MINNESOTA

This plat of THE LAKES OF RADISSON FIFTEENTH ADDITION was approved and accepted by the City Council of the City of Blaine, Minnesota, at a regular meeting thereof held this 13th day of March, 2004. If applicable, the written comments and recommendations of the Commissioner of Transportation and the County Highway Engineer have been received by the City or the prescribed 30 day period has elapsed without receipt of such comments and recommendations, as provided by Minnesota Statutes Section 505.03, Section 2.

By: *[Signature]* Mayor By: *[Signature]* Clerk

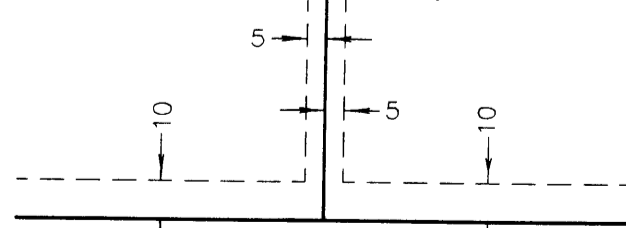
Checked and approved this 11 day of May, 2004.

By: *[Signature]*
 Anoka County Surveyor
 by *[Signature]*

Bearings are based on the East line of Outlot A, THE LAKES OF RADISSON FOURTH ADDITION which is to have a bearing of South 30 degrees 24 minutes 52 seconds East.

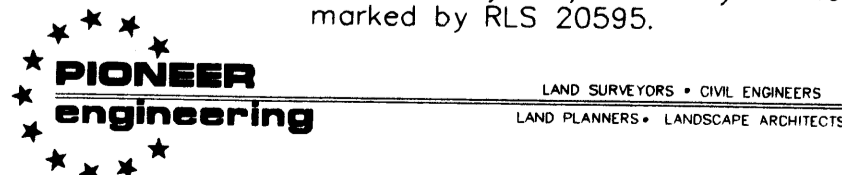
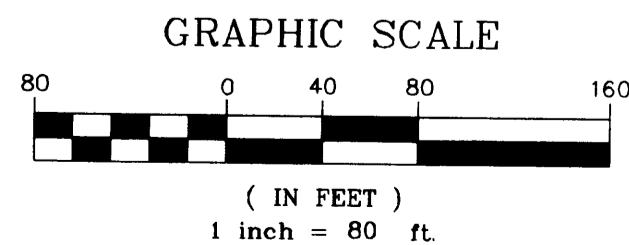
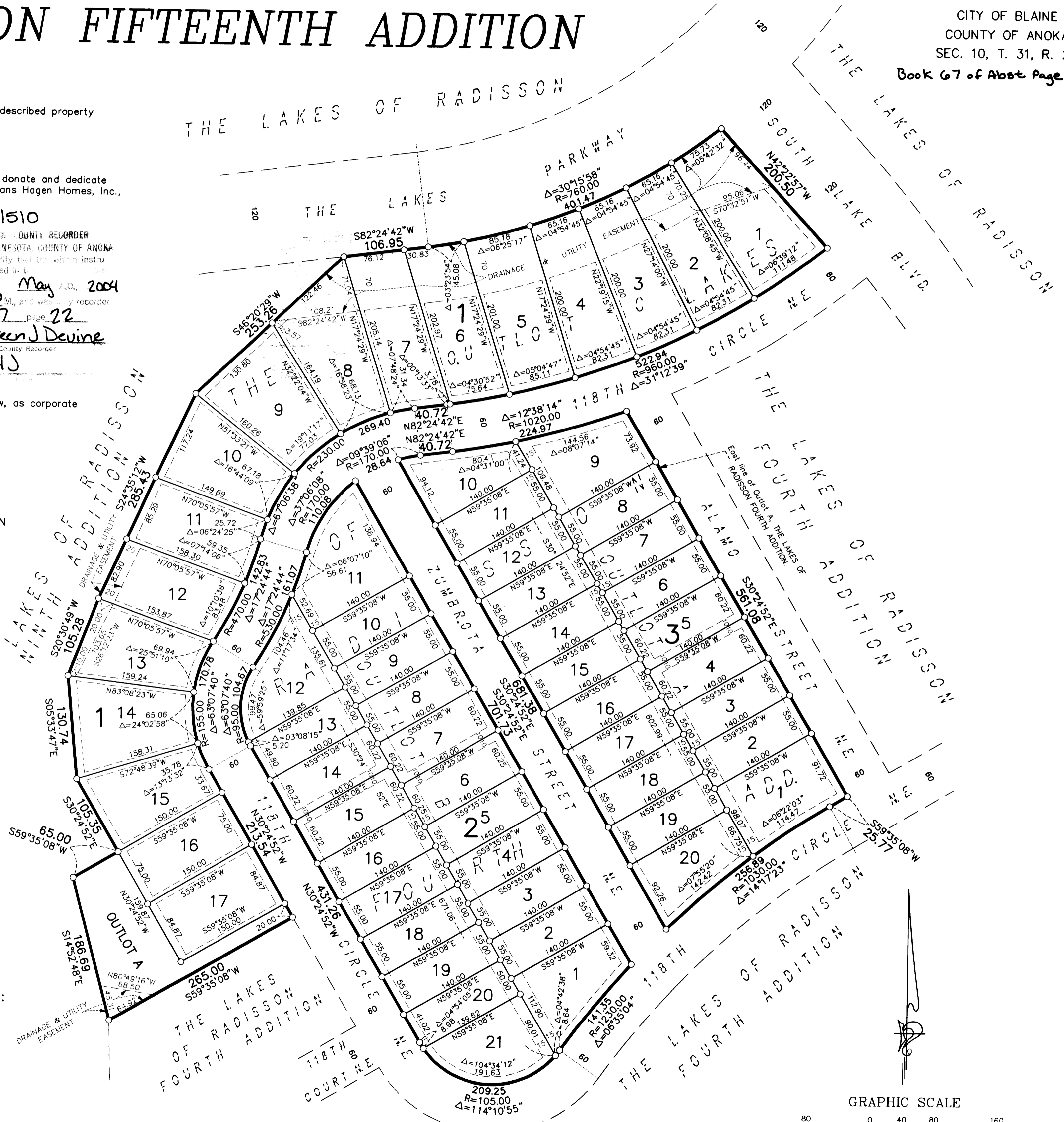
All monuments required by Minnesota Statute, whether shown on this plat or not, will be set within one year of the recording date of this plat, and shall be evidenced by a 1/2 inch by 14 inch iron pipe marked by RLS 20595.

DRAINAGE AND UTILITY EASEMENTS ARE SHOWN THUS:
 (No Scale)



being 5 feet in width, and adjoining lot lines, and 10 feet in width and adjoining right of way lines and rear lot lines unless otherwise shown on the plat.

○ Denotes 1/2 inch by 14 inch iron monument set and marked with license number 20595



Receipt # 2004065414/\$1865.00