

# THE LAKES OF RADISSON THIRTY-SIXTH ADDITION

KNOW ALL MEN BY THESE PRESENTS: That Hans Hagen Homes, Inc., a Minnesota corporation, owner of the following described property situated in the County of Anoka, State of Minnesota, to wit:

Outlots A and C, THE LAKES OF RADISSON THIRTY-FIFTH ADDITION, according to the recorded plat thereof, Anoka County, Minnesota.

Has caused the same to be surveyed and platted as THE LAKES OF RADISSON THIRTY-SIXTH ADDITION and does hereby donate and dedicate to the public for public use forever the drainage and utility easements as shown on this plat. In witness whereof said Hans Hagen Homes, Inc., a Minnesota corporation, has caused these presents to be signed by its proper officer this 13 day of August, 2007.

HANS HAGEN HOMES, INC.

[Signature]  
John P. Rask, Vice President of Land Development

492504.001 - Torns  
Office of REGISTRAR OF TITLES  
STATE OF MINNESOTA  
COUNTY OF ANOKA  
I hereby certify that the within instrument was filed in this office on 8-16-07 at 10:08 o'clock A.M  
Maureen J. Devine, Registrar of Titles  
by SMD  
Deputy Registrar of Titles

STATE OF MINNESOTA  
COUNTY OF ANOKA

The foregoing instrument was acknowledged before me this 13 day of August, 2007 by John P. Rask, as Vice President of Land Development of Hans Hagen Homes, Inc., a Minnesota corporation, on behalf of said corporation.

[Signature]  
Notary Public, Anoka, County, Minnesota  
My Commission Expires Jan 31, 2010

JENNIFER L. HANDE  
NOTARY PUBLIC  
MINNESOTA  
MY COMMISSION EXPIRES JUL 01, 2010

I hereby certify that I have surveyed and platted the property described on this plat as THE LAKES OF RADISSON THIRTY-SIXTH ADDITION; that this plat is a correct representation of the survey; that all distances are correctly shown on the plat in feet and hundredths of a foot; that all monuments have been correctly placed in the ground as shown or will be placed as required by the local governmental unit; that the outside boundary lines are correctly designated on the plat; and that there are no wetlands, in accordance with section 505.01 Subdivision 3, or public highways to be designated other than as shown.

[Signature]  
Terrence E. Rothenbacher, Land Surveyor  
Minnesota License Number 20595

STATE OF MINNESOTA  
COUNTY OF Anoka

The foregoing instrument was acknowledged before me this 16<sup>th</sup> day of August, 2007 by Terrence E. Rothenbacher, Land Surveyor, Minnesota License No. 20595.

CONNIE RAE MOLDENHAUER  
NOTARY PUBLIC  
MY COMM. EXP. 01/31/2010

[Signature]  
Notary Public, Anoka, County, Minnesota  
My Commission Expires 01/31/2010

BLAINE, MINNESOTA

This plat of THE LAKES OF RADISSON THIRTY-SIXTH ADDITION was approved by the City Council of the City of Blaine, Minnesota, at a regular meeting thereof held this 19<sup>th</sup> day of July, 2007. If applicable, the written comments and recommendations of the Commissioner of Transportation and the County Highway Engineer have been received by the City or the prescribed 30 day period has elapsed without receipt of such comments and recommendations, as provided by Minnesota Statutes 505.03, Section 2.

By: [Signature], Mayor

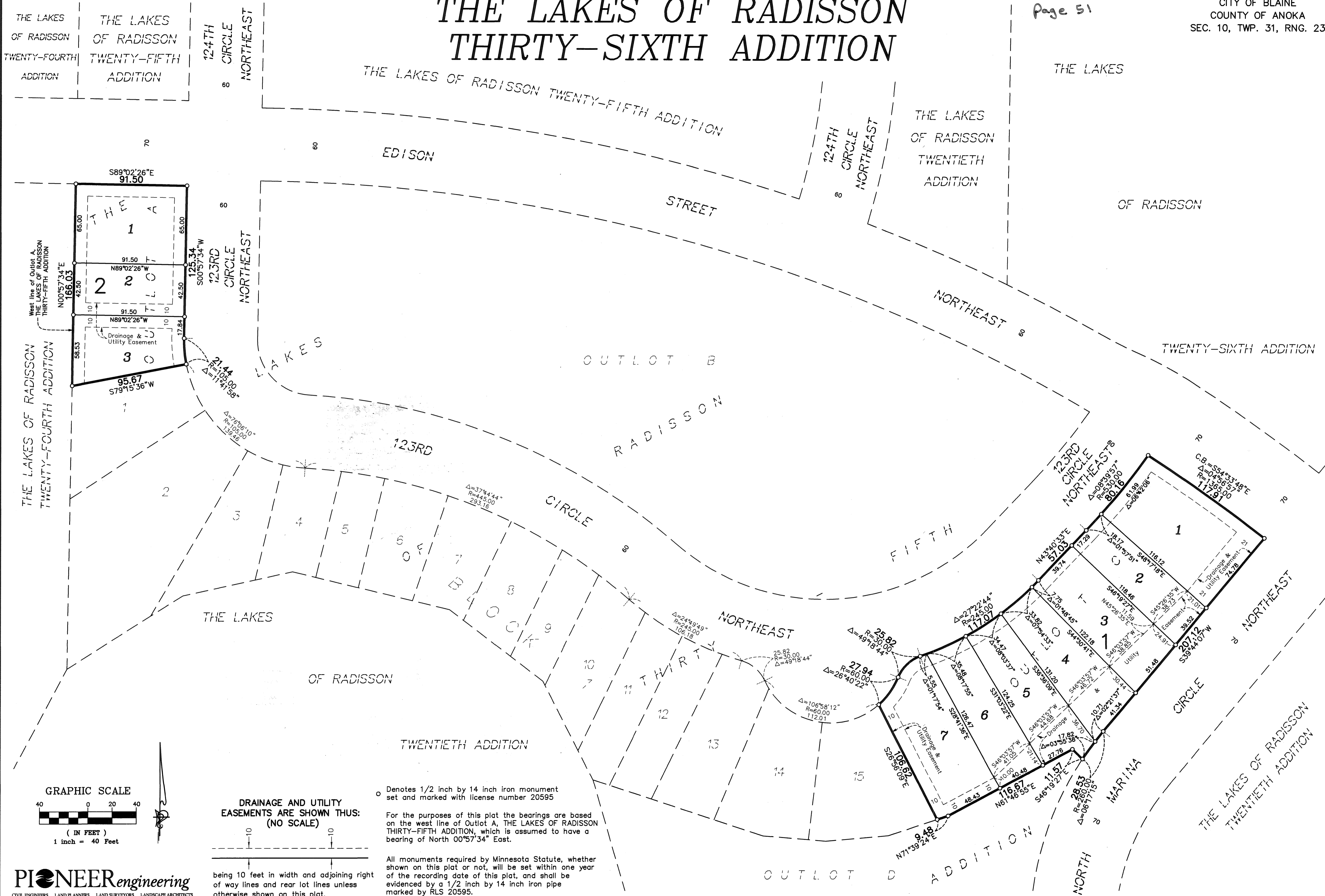
By: [Signature], Clerk

Checked and approved this 16<sup>th</sup> day of AUGUST, 2007.

By: [Signature]  
Anoka County Surveyor

I HEREBY CERTIFY THAT THE CURRENT AND DELINQUENT TAXES ON THE LANDS DESCRIBED WITHIN ARE PAID AND THE TRANSFER IS ENTERED Aug 16, 2007  
MAUREN J. DEVINE  
PROPERTY TAX ADMINISTRATOR  
BY [Signature]  
DEPUTY PROPERTY TAX ADMINISTRATOR

# THE LAKES OF RADISSON THIRTY-SIXTH ADDITION



THE LAKES OF RADISSON TWENTY-FOURTH ADDITION

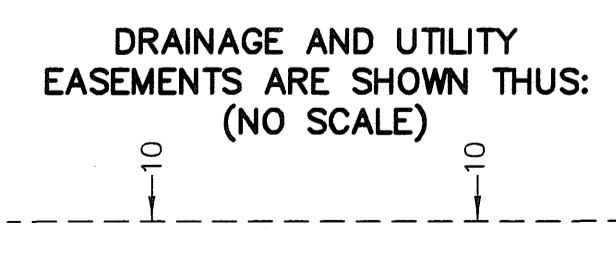
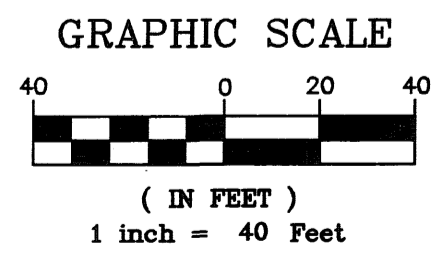
THE LAKES OF RADISSON TWENTY-FIFTH ADDITION

THE LAKES OF RADISSON TWENTIETH ADDITION

OF RADISSON

TWENTY-SIXTH ADDITION

THE LAKES OF RADISSON TWENTY-FOURTH ADDITION



○ Denotes 1/2 inch by 14 inch iron monument set and marked with license number 20595

For the purposes of this plat the bearings are based on the west line of Outlot A, THE LAKES OF RADISSON THIRTY-FIFTH ADDITION, which is assumed to have a bearing of North 00°57'34" East.

All monuments required by Minnesota Statute, whether shown on this plat or not, will be set within one year of the recording date of this plat, and shall be evidenced by a 1/2 inch by 14 inch iron pipe marked by RLS 20595.