

# THE LAKES OF RADISSON THIRTY-NINTH ADDITION

City of Blaine  
County of Anoka  
Section 10, T31, R23

BK 74 of Plat Pg 39

KNOW ALL MEN BY THESE PRESENTS: That Main Street 1000 LLC, a Minnesota limited liability company, owner and Village Bank, a Minnesota corporation, mortgagee of the following described property situated in the City of Blaine, State of Minnesota, County of Anoka, to wit:

Outlots P, Q, R, S, THE LAKES OF RADISSON TWENTIETH ADDITION, Anoka County, Minnesota.

And that Hans Hagen Homes, Inc., a Minnesota Corporation, owner of the following described property situated in the City of Blaine, State of Minnesota, County of Anoka, to wit:

Outlots O and T, THE LAKES OF RADISSON TWENTIETH ADDITION, Anoka County, Minnesota.

Have caused the same to be surveyed and platted as THE LAKES OF RADISSON THIRTY-NINTH ADDITION and do hereby dedicate to the public for public use forever the public ways and the drainage and utility easements as shown on this plat.

MAIN STREET 1000 LLC

In witness whereof said Main Street 1000 LLC, a Minnesota limited liability company, has caused these presents to be signed by its proper officer this 16th day of July, 2008.

Anthony J. Emmerich, as Chief Manager  
Anthony J. Emmerich

STATE OF MINNESOTA

COUNTY OF Anoka  
The foregoing instrument was acknowledged before me this 16th day of July, 2008, by Anthony J. Emmerich, as Chief Manager of Main Street 1000 LLC, a Minnesota limited liability company, on behalf of the company.

Deanna Jo Thompson  
Deanna Jo Thompson  
Notary Public, Anoka County, Minnesota  
My Commission Expires Jan. 31, 2010

VILLAGE BANK

In witness whereof said Village Bank, a Minnesota Corporation, has caused these presents to be signed by its proper officer this 29th day of July, 2008.

Patrick W. Cullen, as Senior Vice President  
Patrick W. Cullen

STATE OF MINNESOTA

COUNTY OF Anoka  
The foregoing instrument was acknowledged before me this 29th day of July, 2008, by Patrick W. Cullen, as Senior Vice President of Village Bank, a Minnesota Corporation, on behalf of the corporation.

Diane Barkdull  
Diane Barkdull  
Notary Public, Anoka County, Minnesota  
My Commission Expires 1-31-2010

HANS HAGEN HOMES

In witness whereof said Hans Hagen Homes, Inc., a Minnesota Corporation, has caused these presents to be signed by its proper officer this 29th day of July, 2008.

John P. Rask, as Vice President  
John P. Rask

STATE OF MINNESOTA

COUNTY OF Anoka  
The foregoing instrument was acknowledged before me this 29th day of July, 2008, by John P. Rask, as Vice President of Hans Hagen Homes, a Minnesota Corporation, on behalf of the corporation.

Janice L. Hamer  
Janice L. Hamer  
Notary Public, Anoka County, Minnesota  
My Commission Expires Jan 31, 2010

I hereby certify that I have surveyed and platted the land described on this plat as THE LAKES OF RADISSON THIRTY-NINTH ADDITION and that this plat is a correct representation of the boundary survey; that all mathematical data and labels are correctly designated on this plat; that all outside boundary monuments of this plat have been correctly set and that all other required monuments will be correctly set within one year of the recording of this plat; that as of the date of this certificate, all water boundaries and wet lands, as defined in Minnesota Statutes 505.01, Subd. 3, are shown and labeled on this plat; and that all public ways are shown and labeled on this plat.

Daniel W. Obermiller  
Daniel W. Obermiller, Land Surveyor  
Minnesota Registration No. 25341

STATE OF MINNESOTA

COUNTY OF Anoka  
The foregoing Surveyor's Certificate was acknowledged before me this 15th day of July, 2008, by Daniel W. Obermiller, Land Surveyor.

Debbie L. Munica  
Debbie L. Munica  
Notary Public, Anoka County, Minnesota  
My Commission Expires Jan 31, 2008

This plat of THE LAKES OF RADISSON THIRTY-NINTH ADDITION was approved by the City Council of Blaine, Minnesota at a regular meeting thereof held this 20th day of March, 2008, and if applicable, the written comments and recommendations of the Commissioner of Transportation and the County Highway Engineer have been received by the City or the prescribed 30 day period has elapsed without receipt of such comments and recommendations, as provided by Minnesota Statutes, Section 505.03, Subd. 2.

By Tom Rasmussen Mayor By Jane M. Cross Clerk

This plat has been checked and approved this 12th day of August, 2008.

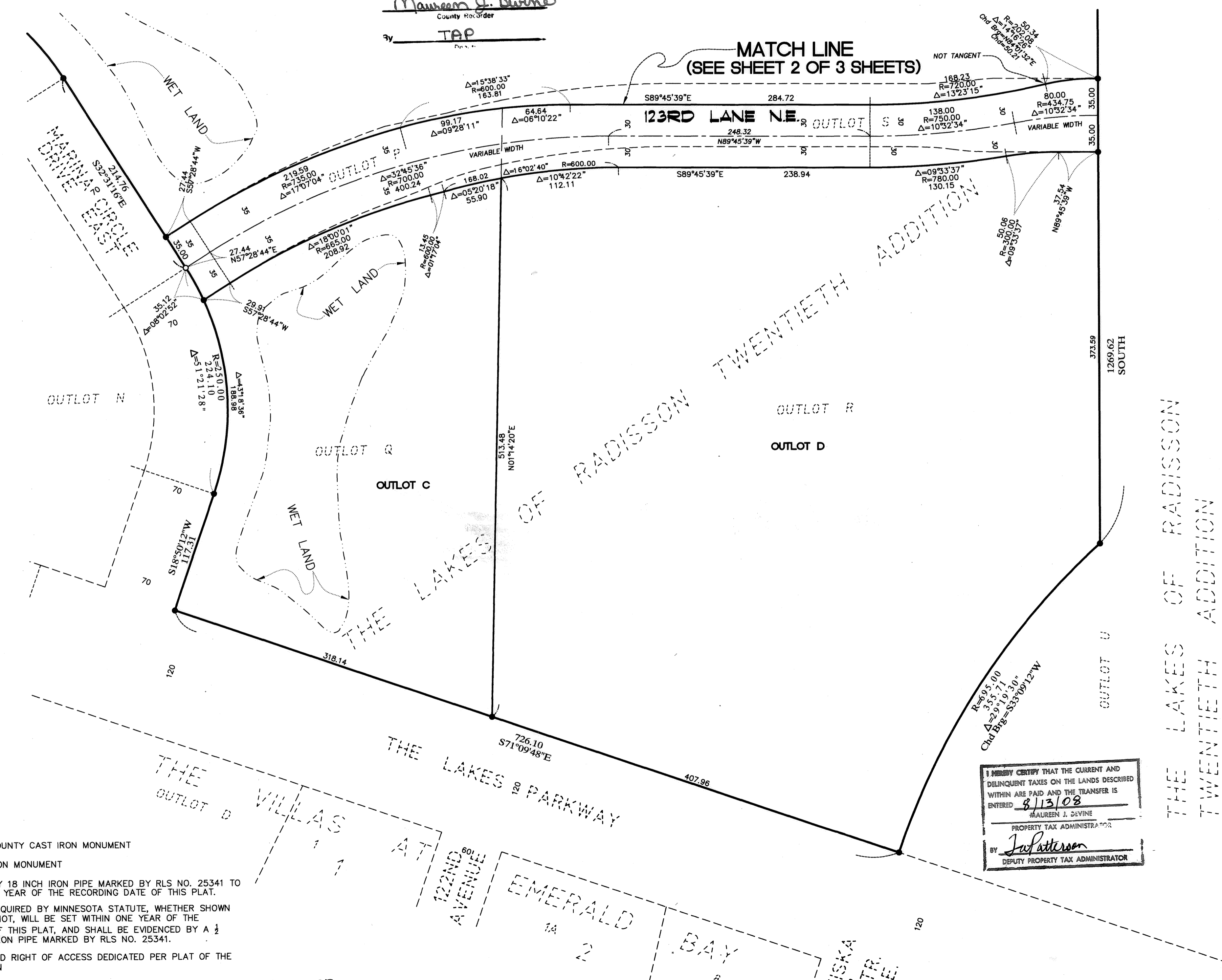
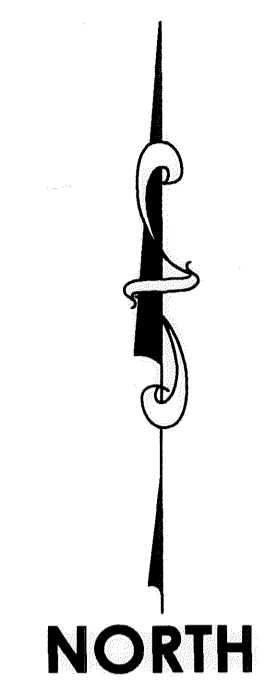
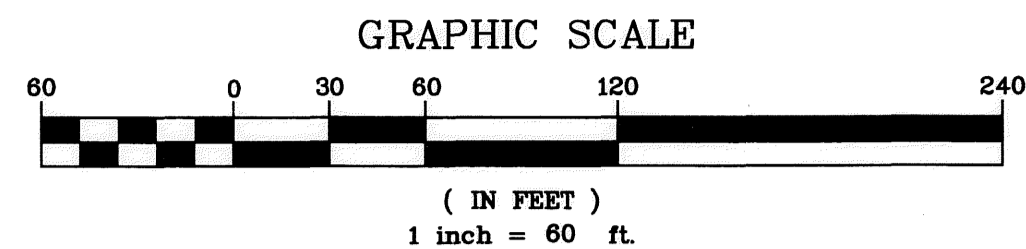
Larry D. Holm by Charles F. Kutzgen, Deputy  
Larry D. Holm  
Anoka County Surveyor

**E. G. RUD & SONS, INC.**  
EST. 1977 Professional Land Surveyors

For the purposes of this plat the north line of the Northeast Quarter of Section 10, Township 31, Range 23, Anoka County, Minnesota, is assumed to have a bearing of S89°02'45"E.

2002274.001  
OFFICE OF COUNTY RECORDER  
STATE OF MINNESOTA, COUNTY OF ANOKA  
I hereby certify that the within instrument was filed in this office for record on the 13th day of August, A.D., 2008 at 10:30 o'clock A.M., and was duly recorded in book 74 Page 39  
Maureen J. Devine  
County Recorder

495877.001  
Office of REGISTRAR OF TITLES  
STATE OF MINNESOTA  
COUNTY OF ANOKA  
I hereby certify that the within instrument was filed in this office on 13th of August 2008 at 10:30 o'clock A.M.  
Maureen J. Devine, Registrar of Titles  
Deputy Registrar of Titles



- DENOTES ANOKA COUNTY CAST IRON MONUMENT
- DENOTES FOUND IRON MONUMENT
- DENOTES 1/2 INCH BY 18 INCH IRON PIPE MARKED BY RLS NO. 25341 TO BE SET WITHIN ONE YEAR OF THE RECORDING DATE OF THIS PLAT.
- ALL MONUMENTS REQUIRED BY MINNESOTA STATUTE, WHETHER SHOWN ON THIS PLAT OR NOT, WILL BE SET WITHIN ONE YEAR OF THE RECORDING DATE OF THIS PLAT, AND SHALL BE EVIDENCED BY A 1/2 INCH BY 18 INCH IRON PIPE MARKED BY RLS NO. 25341.
- DENOTES RESTRICTED RIGHT OF ACCESS DEDICATED PER PLAT OF THE LAKES OF RADISSON

I HEREBY CERTIFY THAT THE CURRENT AND DELINQUENT TAXES ON THE LANDS DESCRIBED WITHIN ARE PAID AND THE TRANSFER IS ENTERED 8/13/08  
MAUREEN J. DEVINE  
PROPERTY TAX ADMINISTRATOR  
BY Jud Patterson  
DEPUTY PROPERTY TAX ADMINISTRATOR

\$ 56.00

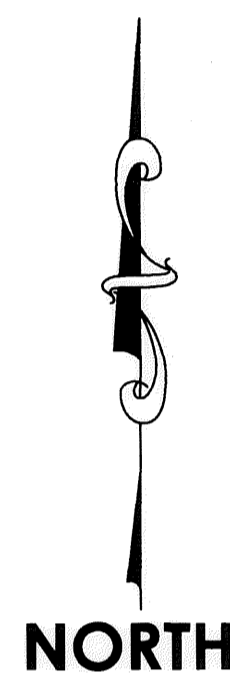
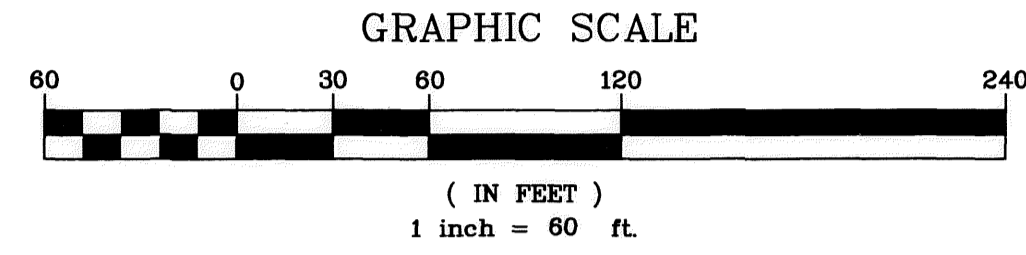
# THE LAKES OF RADISSON THIRTY-NINTH ADDITION

SAVANNA GROVE  
OUTLOT E

BK 74 of Plat Pg 39  
City of Blaine  
County of Anoka  
Section 10, T31, R23

ANOKA COUNTY HIGHWAY RIGHT-OF-WAY PLAT NO. 46  
(C.S.A.H. NO. 14) MAIN STREET

NORTHEAST CORNER OF SECTION 10,  
TOWNSHIP 31, RANGE 23



THE LAKES OF RADISSON  
TWENTY-SIXTH ADDITION

HARPERS ST. NE.

THE LAKES OF RADISSON  
TWENTIETH ADDITION

THE LAKES OF RADISSON

THE LAKES OF RADISSON TWENTIETH ADDITION

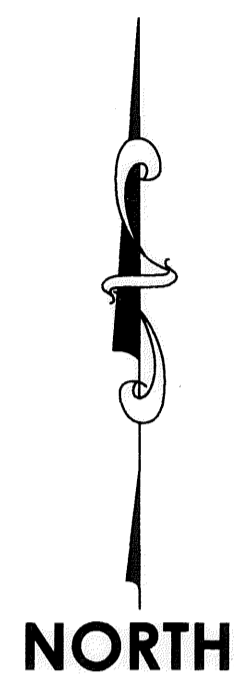
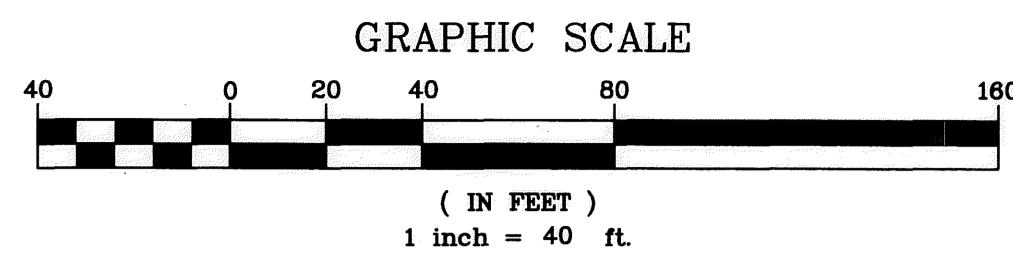
For the purposes of this plat the north line of the Northeast Quarter of Section 10, Township 31, Range 23, Anoka County, Minnesota, is assumed to have a bearing of S89°02'45"E.

**E. G. RUD & SONS, INC.**  
EST. 1977 Professional Land Surveyors

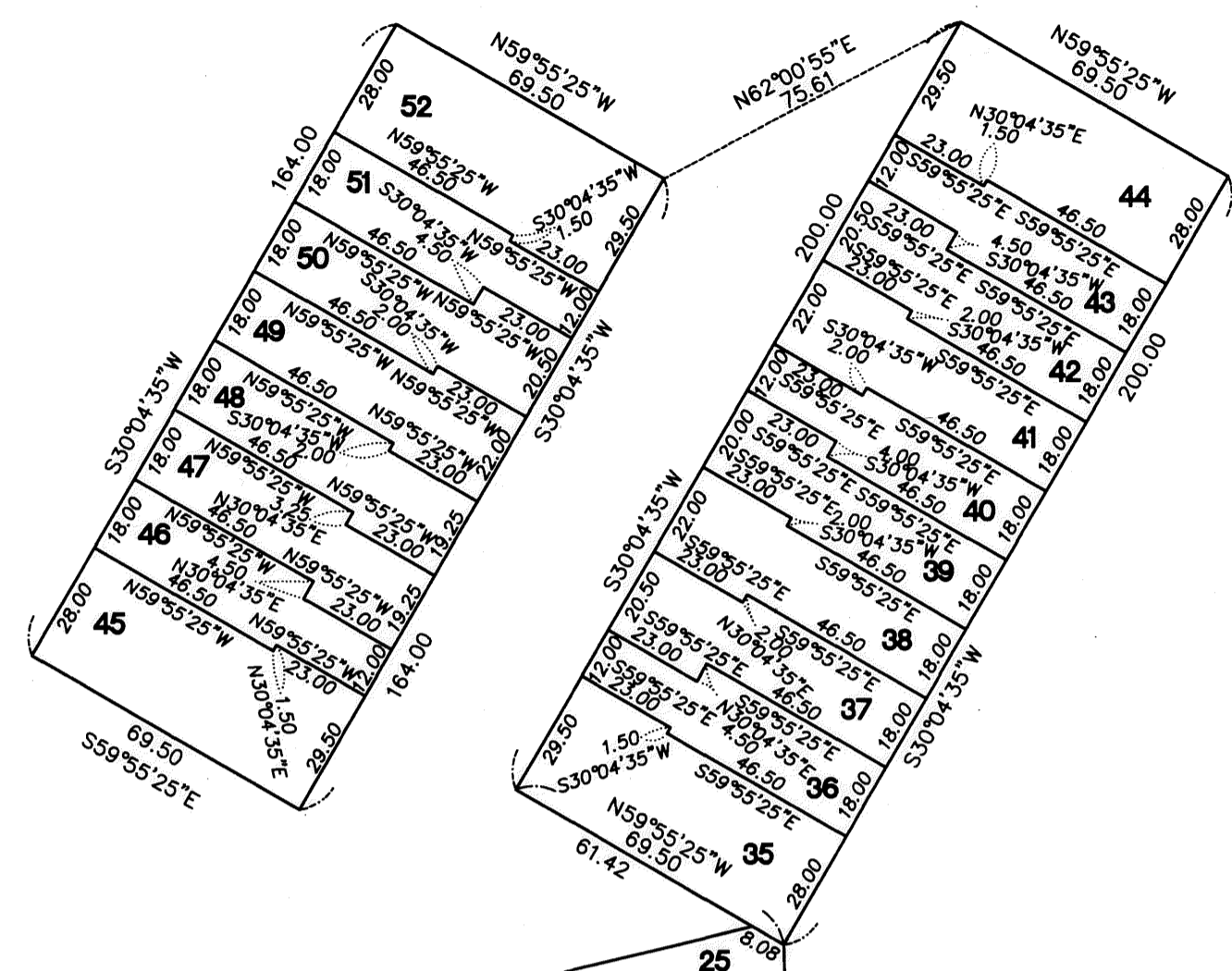
MATCH LINE  
(SEE SHEET 1 OF 3 SHEETS)

- DENOTES ANOKA COUNTY CAST IRON MONUMENT
- DENOTES FOUND IRON MONUMENT
- DENOTES 1/2 INCH BY 18 INCH IRON PIPE MARKED BY RLS NO. 25341 TO BE SET WITHIN ONE YEAR OF THE RECORDING DATE OF THIS PLAT.
- ALL MONUMENTS REQUIRED BY MINNESOTA STATUTE, WHETHER SHOWN ON THIS PLAT OR NOT, WILL BE SET WITHIN ONE YEAR OF THE RECORDING DATE OF THIS PLAT, AND SHALL BE EVIDENCED BY A 1/2 INCH BY 18 INCH IRON PIPE MARKED BY RLS NO. 25341.
- ▲ DENOTES RESTRICTED RIGHT OF ACCESS DEDICATED PER PLAT OF THE LAKES OF RADISSON

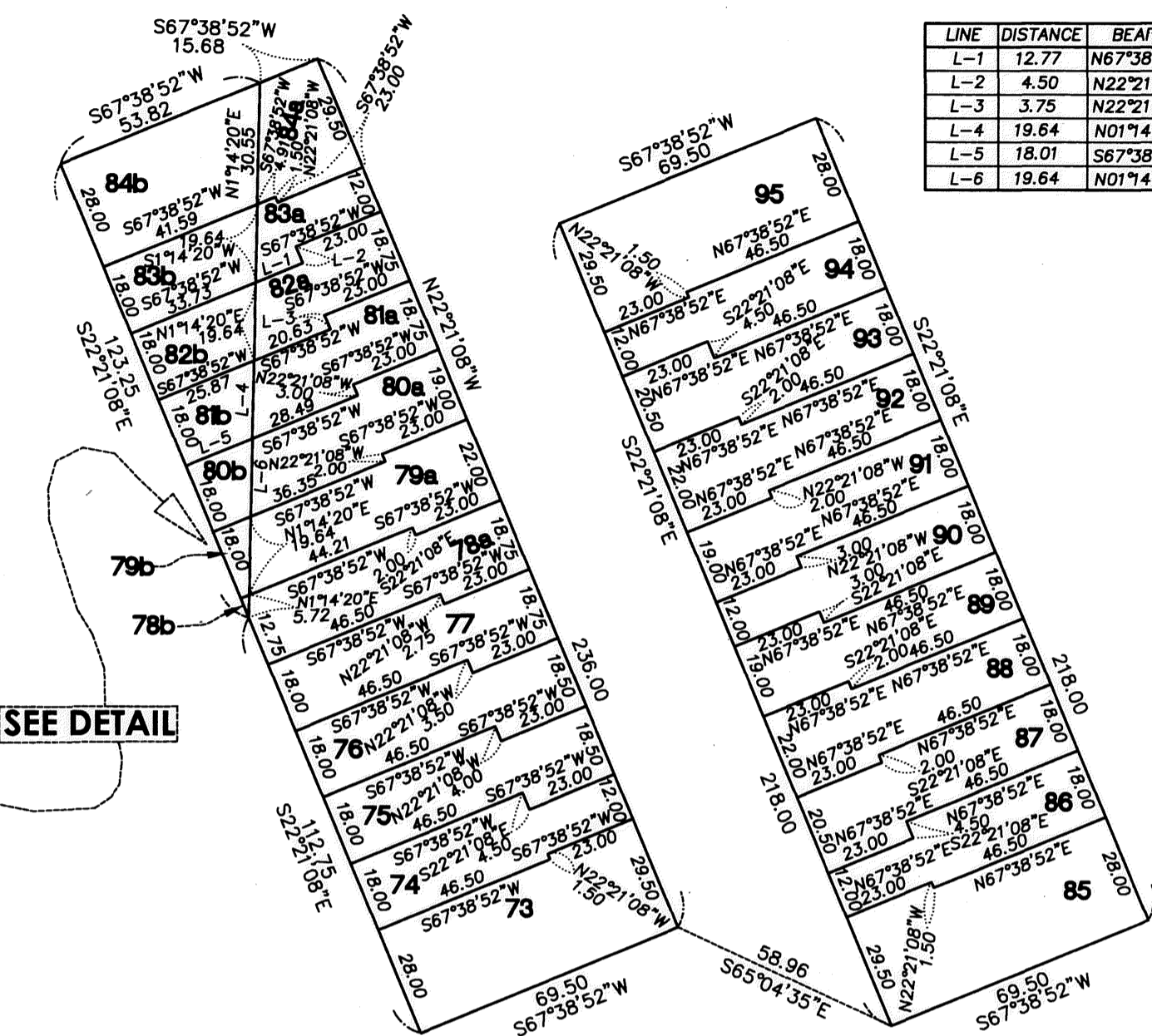
# THE LAKES OF RADISSON THIRTY-NINTH ADDITION



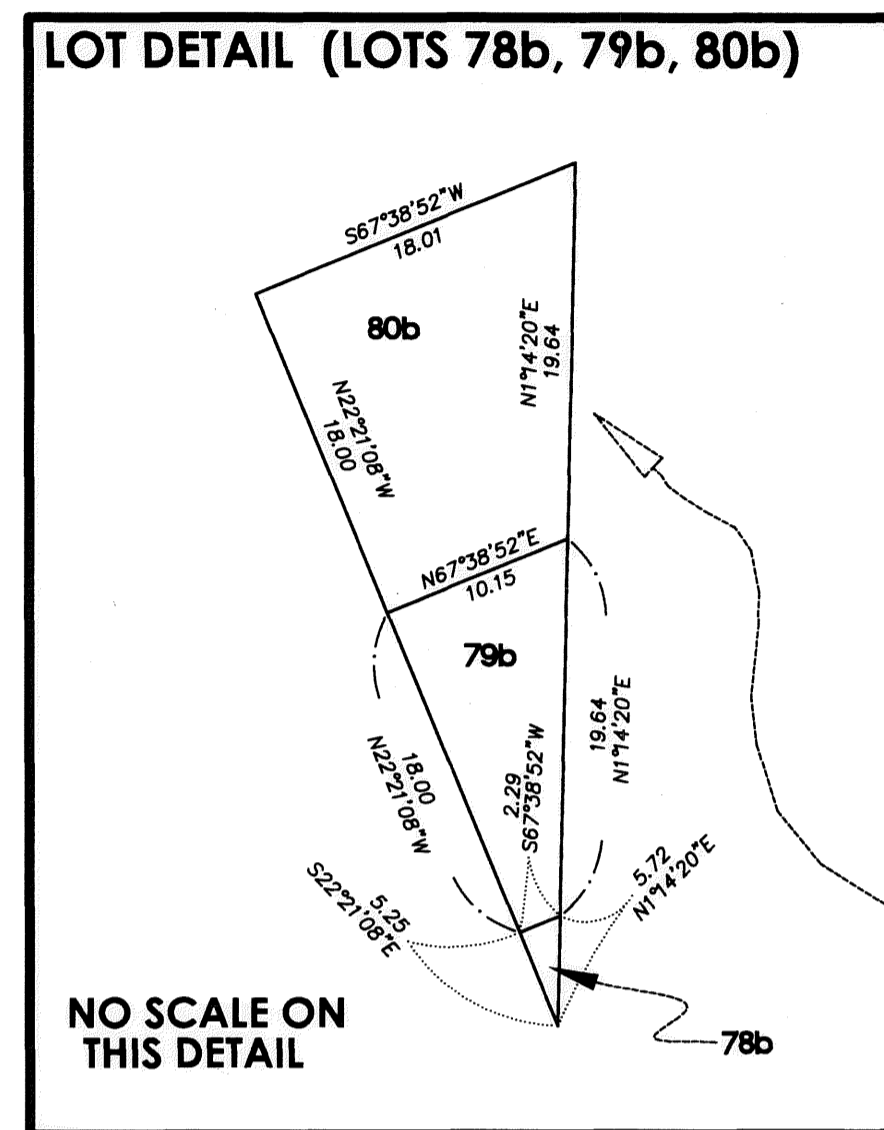
LOT DETAIL (LOTS 35-52)



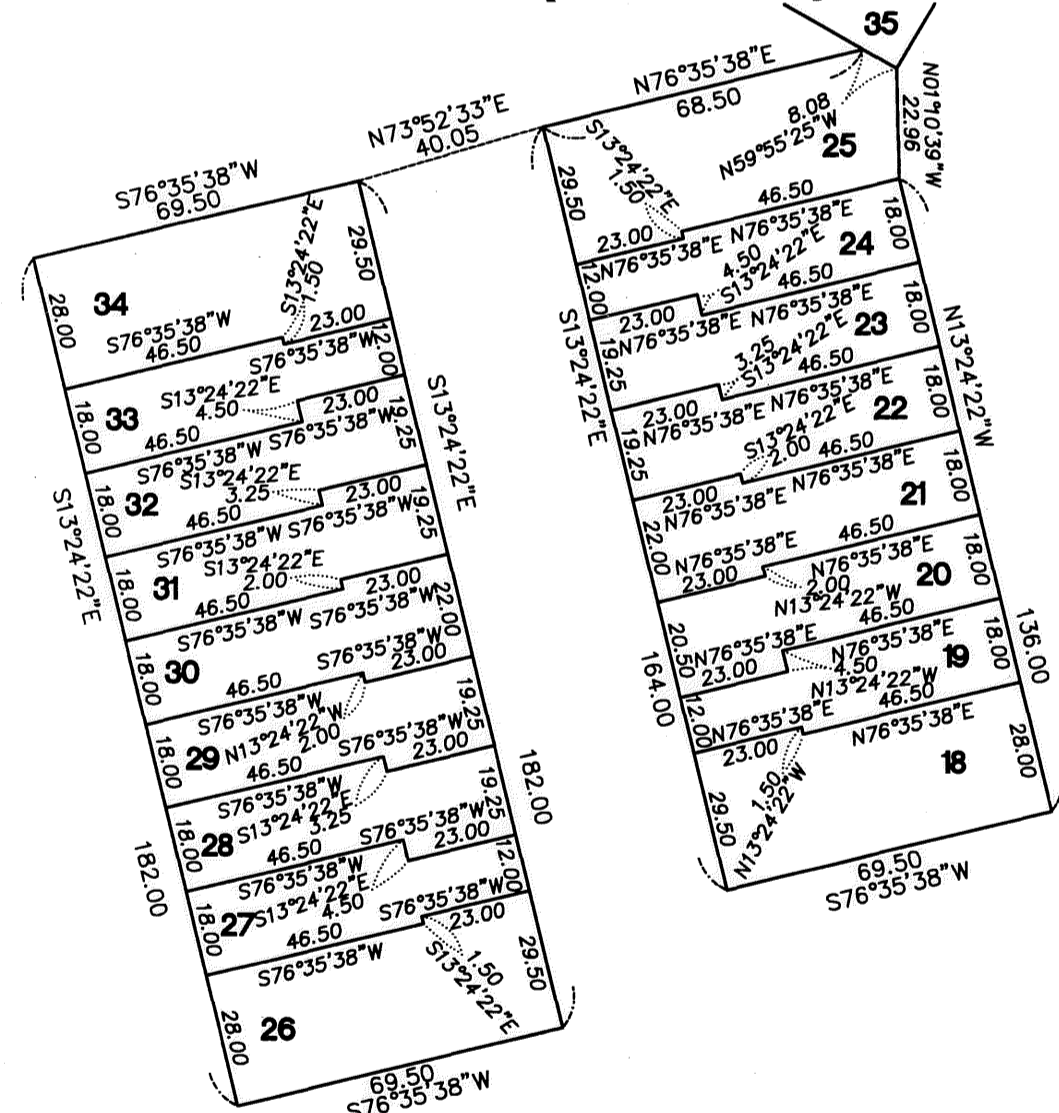
LOT DETAIL (LOTS 73-95)



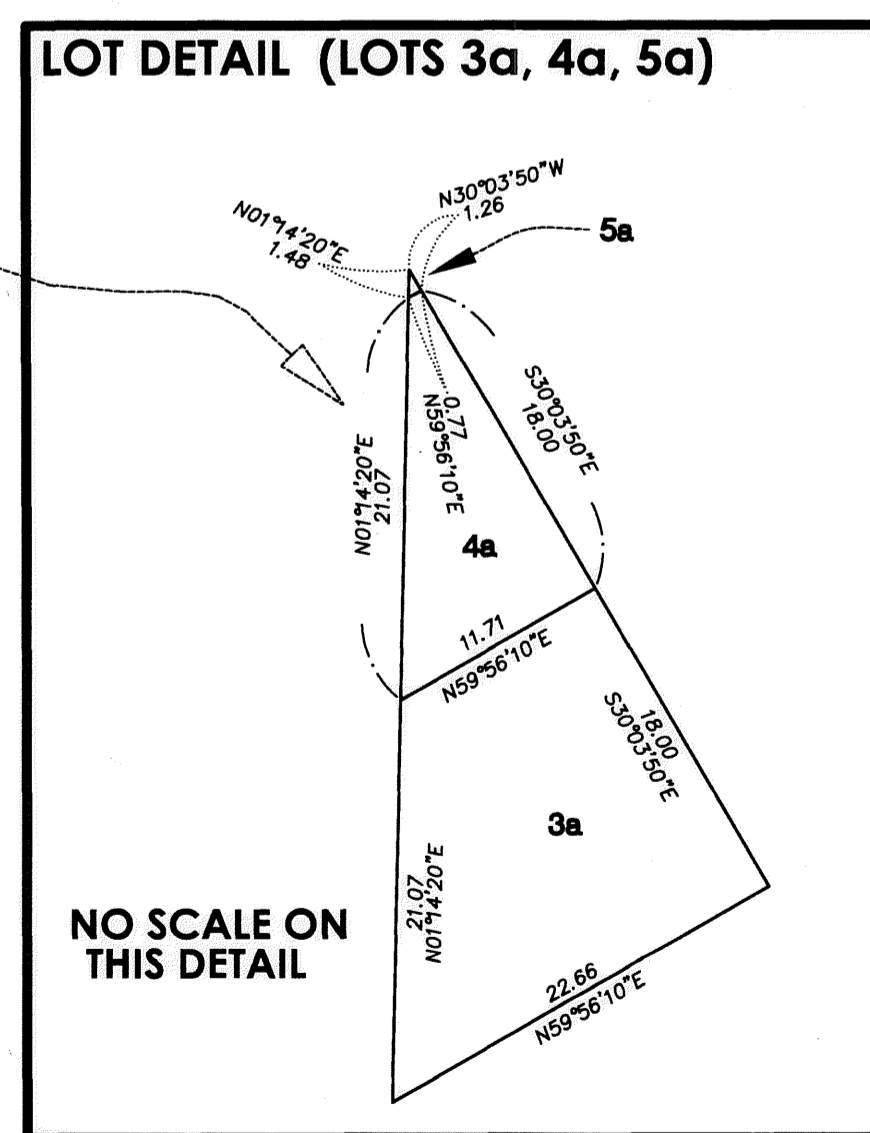
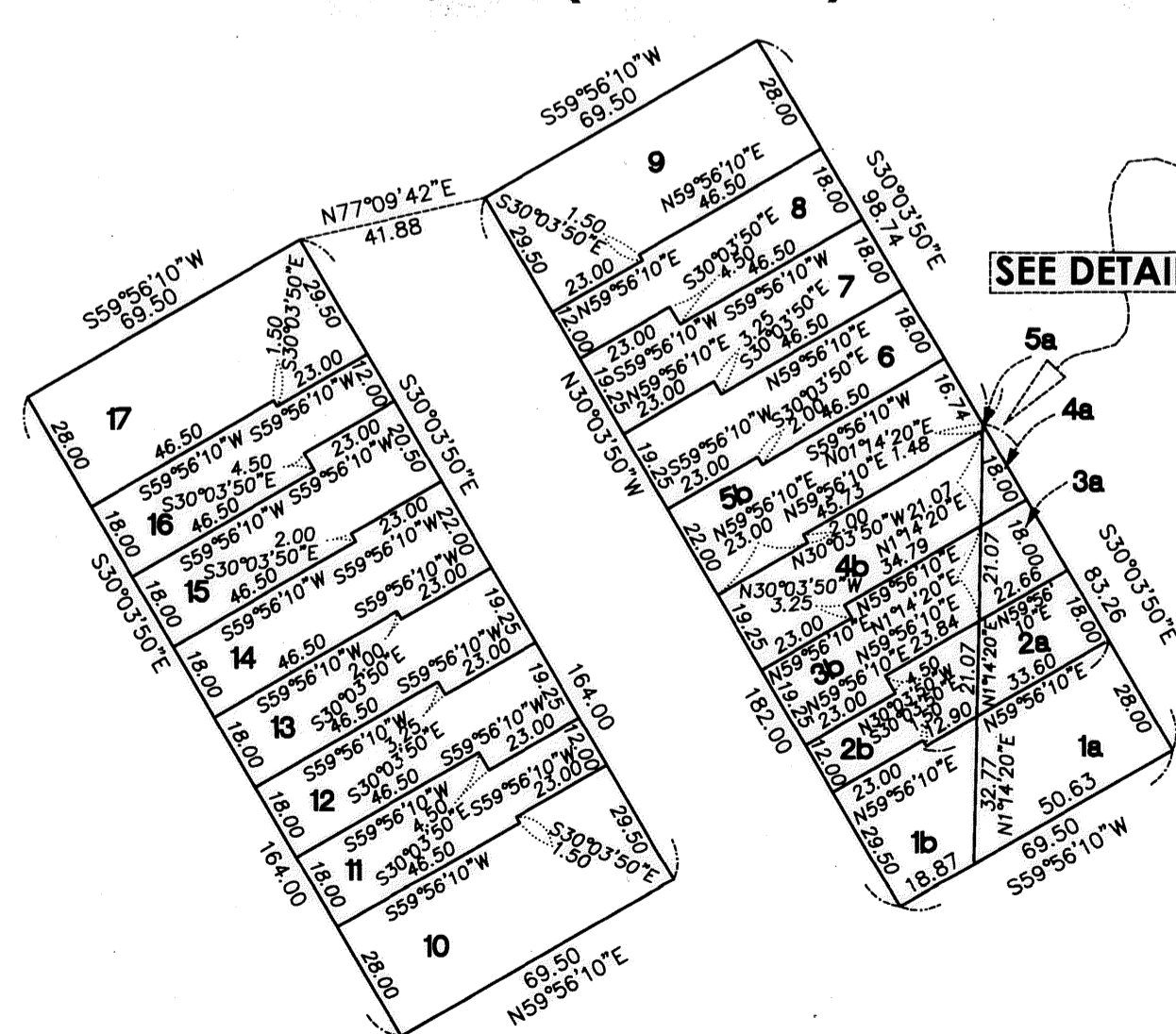
LINE	DISTANCE	BEARING
L-1	12.77	N67°38'52"E
L-2	4.50	N22°21'08"W
L-3	3.75	N22°21'08"W
L-4	18.84	N01°14'20"E
L-5	18.01	S67°38'52"W
L-6	18.84	N01°14'20"E



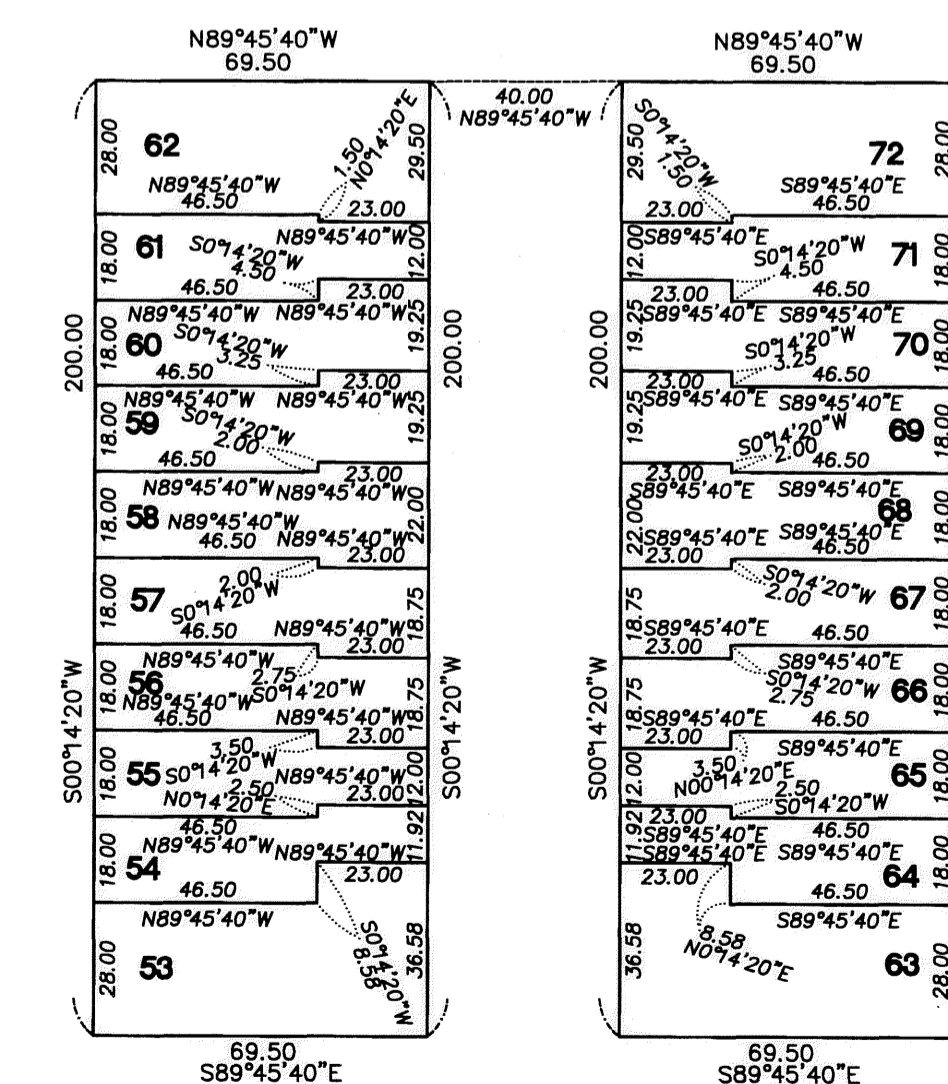
LOT DETAIL (LOTS 18-34)



LOT DETAIL (LOTS 1a-17)



LOT DETAIL (LOTS 53-72)



For the purposes of this plat the north line of the Northeast Quarter of Section 10, Township 31, Range 23, Anoka County, Minnesota, is assumed to have a bearing of S89°02'45"E.