

# THE LAKES OF RADISSON FORTY-FIRST ADDITION

CITY OF BLAINE  
COUNTY OF ANOKA  
SEC. 10, TWP. 31, RNG. 23

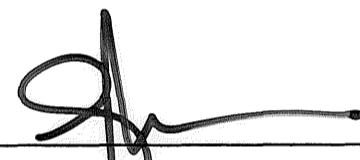
KNOW ALL MEN BY THESE PRESENTS: That Main Street 1000, LLC, a Minnesota limited liability company, owner of the following described property situated in the County of Anoka, State of Minnesota, to wit:

Outlots D and E, VILLAS AT EMERALD BAY, according to the recorded plat thereof, Anoka County, Minnesota.

Has caused the same to be surveyed and platted as THE LAKES OF RADISSON FORTY-FIRST ADDITION.

In witness whereof said Main Street 1000, LLC, a Minnesota limited liability company, has caused these presents to be signed by its proper officer this 29<sup>th</sup> day of July, 2008.

MAIN STREET 1000, LLC



Anthony J. Emmerich, as Chief Manager

STATE OF MINNESOTA  
COUNTY OF Anoka

The foregoing instrument was acknowledged before me this 29<sup>th</sup> day of July, 2008 by Anthony J. Emmerich as chief manager of Main Street 1000, LLC, a Minnesota limited liability company, on behalf of said company.



Deanna Jo Thompson

Notary Public, Anoka County, Minnesota  
My Commission Expires Jan. 31, 2010

I hereby certify I have surveyed and platted or directly supervised the surveying and platting of the land described on this plat as THE LAKES OF RADISSON FORTY-FIRST ADDITION; that this plat is a correct representation of the boundary survey; all mathematical data and labels are correctly designated; all monuments depicted on this plat have been or will be correctly set within one year; all water boundaries and wet lands as of this date, as defined in Minnesota Statutes 505.01, Subd. 3, are shown and labeled; and all public ways are shown and labeled.



Thomas R. Balluff, Land Surveyor  
Minnesota License Number 40361

STATE OF MINNESOTA  
COUNTY OF Anoka

The foregoing instrument was acknowledged before me this 29<sup>th</sup> day of July, 2008 by Thomas R. Balluff, Land Surveyor, Minnesota License No. 40361.



Pamela K. Reckseidler-Barnard

Notary Public, Hedon County, Minnesota  
My Commission Expires January 31, 2010

BLAINE, MINNESOTA

This plat of THE LAKES OF RADISSON FORTY-FIRST ADDITION was approved by the City Council of the City of Blaine, Minnesota, at a regular meeting thereof held this 17<sup>th</sup> day of July, 2008. If applicable, the written comments and recommendations of the Commissioner of Transportation and the County Highway Engineer have been received by the City or the prescribed 30 day period has elapsed without receipt of such comments and recommendations, as provided by Minnesota Statutes 505.03, Section 2.

By: Tom Ryan, Mayor

By: Jane M. Cross, Clerk

Checked and approved this 22<sup>nd</sup> day of August, 2008.

By: Larry D. Hoium  
Larry D. Hoium  
Anoka County Surveyor

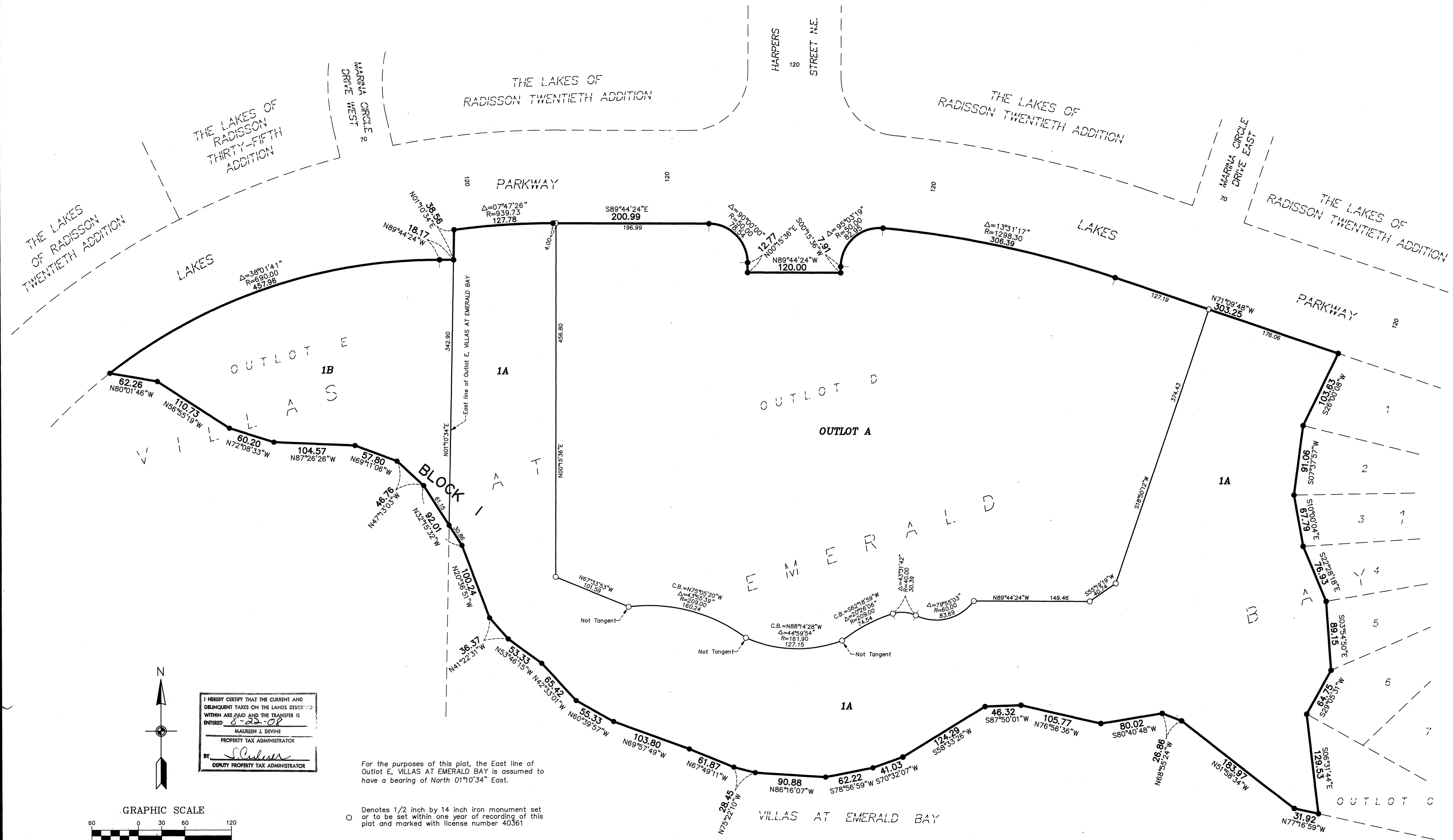
2002456.001  
OFFICE OF COUNTY RECORDER  
STATE OF MINNESOTA, COUNTY OF ANOKA  
I hereby certify that the within instrument was filed in this office for record on the 22<sup>nd</sup> of Aug A.D., 2008 at 10:20 o'clock A.M., and was duly recorded in book 74 page 40  
Margaret J. Deine  
County Recorder  
By: JMD Deputy

495953.001  
Office of REGISTRAR OF TITLES  
STATE OF MINNESOTA  
COUNTY OF ANOKA  
I hereby certify that the within instrument was filed in this office on Aug 22, 2008 at 10:20 o'clock A.M.  
Margaret J. Deine, Registrar of Titles  
By: JMD Deputy Registrar of Titles

\$56

# THE LAKES OF RADISSON FORTY-FIRST ADDITION

CITY OF BLAINE  
COUNTY OF ANOKA  
SEC. 10, TWP. 31, RNG. 23



I HEREBY CERTIFY THAT THE CURRENT AND DELINQUENT TAXES ON THE LANDS DESCRIBED WITHIN ARE PAID AND THE TRANSFER IS ENTERED 8-22-08

MAUREN J. DEVINE  
PROPERTY TAX ADMINISTRATOR

BY: *[Signature]*  
DEPUTY PROPERTY TAX ADMINISTRATOR

For the purposes of this plat, the East line of Outlot E, VILLAS AT EMERALD BAY is assumed to have a bearing of North 01°10'34\"/>

- Denotes 1/2 inch by 14 inch iron monument set or to be set within one year of recording of this plat and marked with license number 40361
- Denotes Found Iron Monument marked with RLS 20595

