

THE LAKES OF RADISSON FORTY-THIRD ADDITION

Book 75 of Abst, pg 26

CITY OF BLAINE
COUNTY OF ANOKA
SEC. 10 & 11, T. 31, R. 23

KNOW ALL PERSONS BY THESE PRESENTS: That Plus Four, LLC, a Minnesota limited liability company, owner of the following described property:

Outlot U, THE LAKES OF RADISSON TWENTIETH ADDITION

Has caused the same to be surveyed and platted as THE LAKES OF RADISSON FORTY-THIRD ADDITION and does hereby dedicate to the public for public use the public ways and the drainage and utility easements as created by this plat.

In witness whereof said Plus Four, LLC, a Minnesota limited liability company, has caused these presents to be signed by its proper officer this 24th day of May, 2010.

Signed: Plus Four, LLC

Bill G. Roessler
Bill G. Roessler, as Chief Manager

STATE OF MINNESOTA
COUNTY OF Hennepin

This instrument was acknowledged before me on May 24, 2010 by Bill G. Roessler, Chief Manager of Plus Four, LLC, a Minnesota limited liability company.

Stephanie A. Simoniek
Stephanie A. Simoniek
Notary Public, Hennepin
My commission expires 11/30/2013

I, Thomas R. Balluff do hereby certify that this plat was prepared by me or under my direct supervision; that I am a duly Licensed Land Surveyor in the State of Minnesota; that this plat is a correct representation of the boundary survey; that all mathematical data and labels are correctly designated on this plat; that all monuments depicted on this plat have been, or will be correctly set within one year; that all water boundaries and wet lands, as defined in Minnesota Statutes, Section 505.01, Subd. 3, as of the date of this certificate are shown and labeled on this plat; and all public ways are shown and labeled on this plat.

Dated this 21st day of MAY, 2010.

Thomas R. Balluff
Thomas R. Balluff, Licensed Land Surveyor
Minnesota License No. 40361

STATE OF MINNESOTA
COUNTY OF Hennepin

This instrument was acknowledged before me on May 21, 2010 by Thomas R. Balluff.

Stephanie A. Simoniek
Stephanie A. Simoniek
Notary Public, Hennepin
My commission expires 11/30/2013

CITY COUNCIL, CITY OF BLAINE, MINNESOTA

This plat of THE LAKES OF RADISSON FORTY-THIRD ADDITION was approved and accepted by the City Council of the City of Blaine, Minnesota at a regular meeting held this 4th day of March, 2010, and said plat is in compliance with the provisions of Minnesota Statutes, Section 505.03, Subd. 2.

CITY COUNCIL, CITY OF BLAINE, MINNESOTA

Paul Ryan Mayor
By *Janet M. Cross* Clerk

COUNTY SURVEYOR

I hereby certify that in accordance with Minnesota Statutes, Section 505.021, Subd. 11, this plat has been reviewed and approved this 1st day of JUNE, 2010.

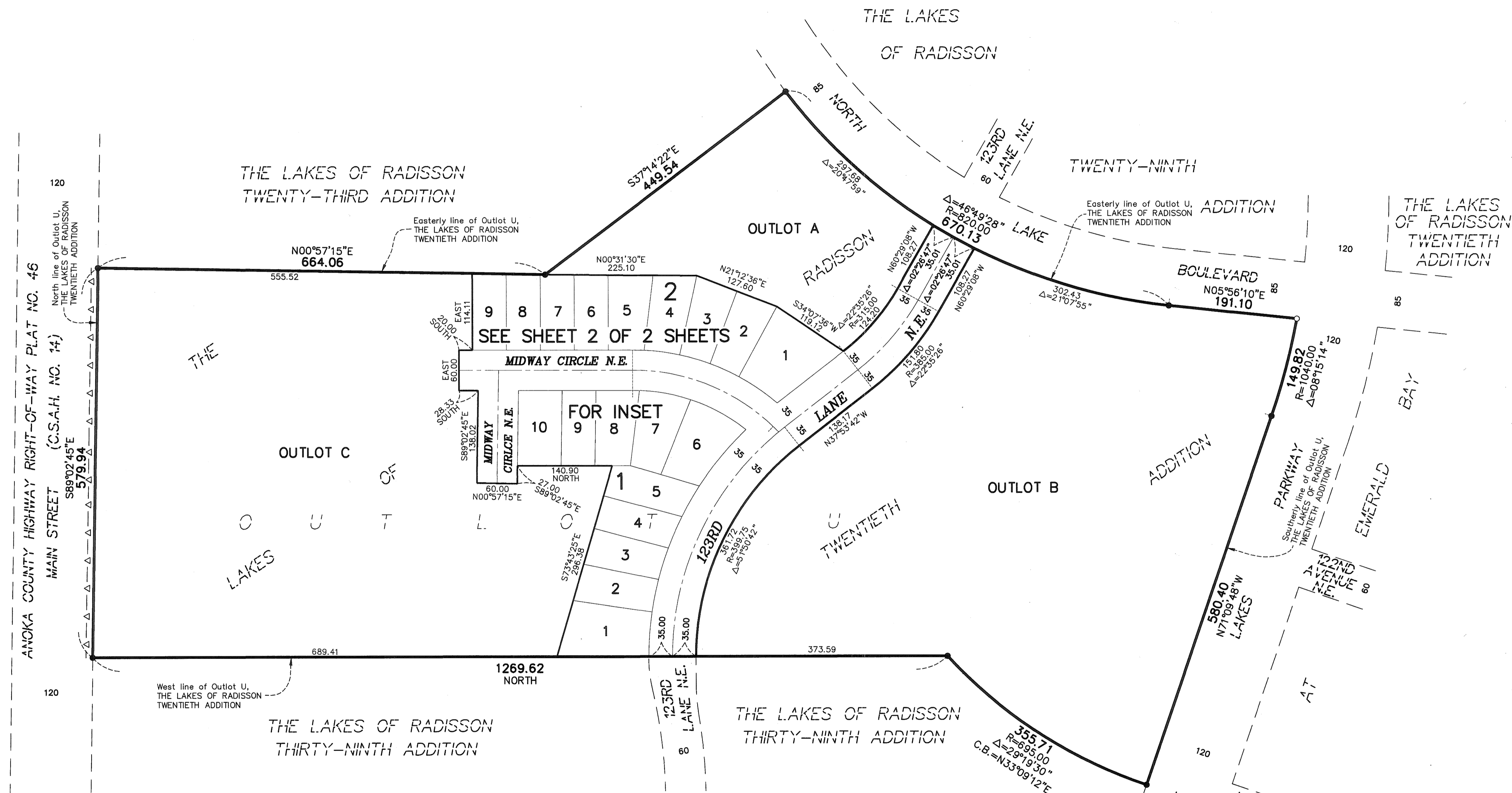
Larry D. Holm
Larry D. Holm
Anoka County Surveyor

20105408.002
OFFICE OF COUNTY RECORDER
STATE OF MINNESOTA, COUNTY OF ANOKA
I hereby certify that the within instrument was filed in this office for record on the 1st June A.D., 2010 at 9:41 o'clock A.M., and was duly recorded in book 75 Abst page 26 by Marianne J. Devine County Recorder

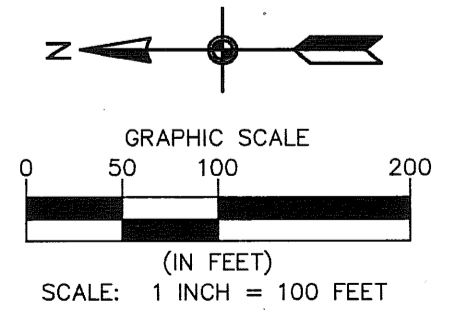
I HEREBY CERTIFY THAT THE CURRENT AND DELINQUENT TAXES ON THE LANDS DESCRIBED WITHIN ARE PAID AND THE TRANSFER IS ENTERED
6-1-10
MAUREEN J. DEVINE
PROPERTY TAX ADMINISTRATOR
By *Maureen J. Devine*
DEPUTY PROPERTY TAX ADMINISTRATOR

Carlson
PROFESSIONAL SERVICES
ENVIRONMENTAL • ENGINEERING • SURVEYING

\$56.00



- For the purposes of this plat, the easterly line of Outlot U, THE LAKES OF RADISSON TWENTIETH ADDITION, is assumed to have a bearing of North 00°57'15" East.
- △ Denotes Restricted Right of Access dedicated per the plat of THE LAKES OF RADISSON
- Denotes 1/2 inch by 14 inch iron monument set or to be set within one year of recording of this plat and marked with license number 40361
- Denotes found iron monument marked with RLS 20595



ANOKA COUNTY HIGHWAY RIGHT-OF-WAY PLAT NO. 46
MAIN STREET (C.S.A.H. NO. 14)

THE LAKES OF RADISSON FORTY-THIRD ADDITION

INSET

120

MAIN STREET (C.S.A.H. NO. 14)

ANOKA COUNTY HIGHWAY RIGHT-OF-WAY PLAT NO. 46

120

THE LAKES OF RADISSON TWENTY-THIRD ADDITION

Easterly line of Outlot U, THE LAKES OF RADISSON TWENTIETH ADDITION

OUTLOT A
DRAINAGE & UTILITY EASEMENT
OVER ALL OF OUTLOT A

N00°57'15"E
664.06

OUTLOT C

MIDWAY CIRCLE N.E.

CIRCLE N.E.

NORTH
DRAINAGE & UTILITY
EASEMENT

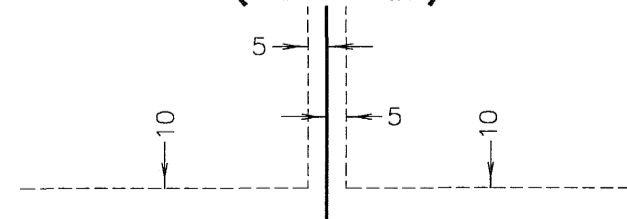
TWENTIETH

1269.62
NORTH
ADDITION

123RD
LANE N.E.

THE LAKES OF RADISSON THIRTY-NINTH ADDITION

DRAINAGE AND UTILITY
EASEMENTS ARE SHOWN THUS:
(NO SCALE)



Being 5 feet in width, and adjoining side lot lines, and 10 feet in width and adjoining right of way lines and rear lot lines unless otherwise shown on this plat.

For the purposes of this plat, the easterly line of Outlot U, THE LAKES OF RADISSON TWENTIETH ADDITION, is assumed to have a bearing of North 00°57'15" East.

- △— Denotes Restricted Right of Access dedicated per the plat of THE LAKES OF RADISSON
- Denotes 1/2 inch by 14 inch iron monument set or to be set within one year of recording of this plat and marked with license number 40361
- Denotes found iron monument marked with RLS 20595

