

THE LAKES OF RADISSON FIFTY-EIGHTH ADDITION

KNOW ALL PERSONS BY THESE PRESENTS: That Hans Hagen Homes, Inc., a Minnesota corporation, owner of the following described property:
Outlot A, THE LAKES OF RADISSON FORTY-FIRST ADDITION, Anoka County, Minnesota.

That part of The Lakes Parkway as formerly dedicated on the plat of THE LAKES OF RADISSON TWENTIETH ADDITION, Anoka County, Minnesota described as follows:

Commencing at the Northeast corner of Outlot DD, THE LAKES OF RADISSON TWENTIETH ADDITION; thence North 71 degrees 09 minutes 48 seconds West, assumed bearing, along the North line of said Outlot DD a distance of 490.80 feet; thence continuing along said North line and being a tangential curve, concave to the southwest a distance of 306.39 feet, said curve having a radius of 1298.30 feet and a central angle of 13 degrees 31 minutes 17 seconds to the point of beginning; thence southwesterly continuing along said North line and being a compound curve concave to the southeast a distance of 82.95 feet, said curve having a radius of 50.00 feet and a central angle of 95 degrees 03 minutes 19 seconds; thence South 00 degrees 15 minutes 36 seconds West tangent to last described curve and continuing along said North line a distance of 7.91 feet; thence continuing along said North line North 89 degrees 44 minutes 24 seconds West a distance of 29.08 feet; thence along a non-tangential curve, concave to the southeast a distance of 104.30 feet, said curve having a chord bearing of North 52 degrees 14 minutes 34 seconds East, a radius of 70.00 feet and a central angle of 85 degrees 22 minutes 26 seconds; thence South 84 degrees 52 minutes 39 seconds East a distance of 8.74 feet to said North line of Outlot DD and the point of beginning.

together with:

Commencing at the Northeast corner of Outlot DD, THE LAKES OF RADISSON TWENTIETH ADDITION; thence North 71 degrees 09 minutes 48 seconds West, assumed bearing, along the North line of said Outlot DD a distance of 490.80 feet; thence continuing along said North line and being a tangential curve, concave to the southwest a distance of 306.39 feet, said curve having a radius of 1298.30 feet and a central angle of 13 degrees 31 minutes 17 seconds; thence southwesterly continuing along said North line along a compound curve a distance of 82.95 feet, said curve having a radius of 50.00 feet and a central angle of 95 degrees 03 minutes 19 seconds; thence South 00 degrees 15 minutes 36 seconds West tangent to last described curve and continuing along said North line a distance of 7.91 feet; thence North 89 degrees 44 minutes 24 seconds East along said North line a distance of 12.77 feet; thence along said North line along a tangential curve, concave to the southwest a distance of 78.54 feet, said curve having a radius of 50.00 feet and a central angle of 90 degrees 00 minutes 00 seconds; thence South 89 degrees 44 minutes 24 seconds East a distance of 10.00 feet; thence southeasterly along a tangential curve, concave to the southwest a distance of 102.71 feet to the intersection with said North line, said curve having a chord bearing of South 47 degrees 42 minutes 16 seconds East, a radius of 70.00 feet and a central angle of 84 degrees 04 minutes 18 seconds; thence North 89 degrees 44 minutes 24 seconds West along said North line a distance of 29.63 feet to the point of beginning.

Has caused the same to be surveyed and plotted as THE LAKES OF RADISSON FIFTY-EIGHTH ADDITION and does hereby dedicate to the public for public use the public way and the drainage and utility easements as shown on this plat.

In witness whereof said Hans Hagen Homes, Inc., a Minnesota corporation, has caused these presents to be signed by its proper officer this 23rd day of April, 2014.

HANS HAGEN HOMES, INC.

John P. Rask as Vice President

STATE OF MINNESOTA
COUNTY OF ANOKA

This instrument was acknowledged before me this 23rd day of April, 2014, by John P. Rask, as Vice President, of Hans Hagen Homes, Inc., a Minnesota corporation, on behalf of the corporation.

Notary Public, Anoka County, Minnesota
My Commission Expires 1-31-15

I Daniel W. Obermiller do hereby certify that this plat was prepared by me or under my direct supervision; that I am a duly Licensed Land Surveyor in the State of Minnesota; that this plat is a correct representation of the boundary survey; that all mathematical data and labels are correctly designated on this plat; that all monuments depicted on this plat have been, or will be correctly set within one year; that all water boundaries and wet lands, as defined in Minnesota Statutes, Section 505.01, Subd. 3, as of the date of this certificate are shown and labeled on this plat; and all public ways are shown and labeled on this plat.

Dated this 10th day of April, 2014.

Daniel W. Obermiller, Licensed Land Surveyor
Minnesota License No. 25341

STATE OF MINNESOTA
COUNTY OF ANOKA

This instrument was acknowledged before me this 10th day of April, 2014, by Daniel W. Obermiller.

Notary Public, ANOKA County, Minnesota
My Commission Expires Jan. 31, 2015

City Council, City of Blaine, Minnesota

This plat of THE LAKES OF RADISSON FIFTY-EIGHTH ADDITION was approved and accepted by the City Council of the City of Blaine, Minnesota at a regular meeting thereof held this 20th day of March, 2014, and said plat is in compliance with the provisions of Minnesota Statutes, Section 505.03, Subd. 2.

City Council, City of Blaine, Minnesota

Mayor

Clerk

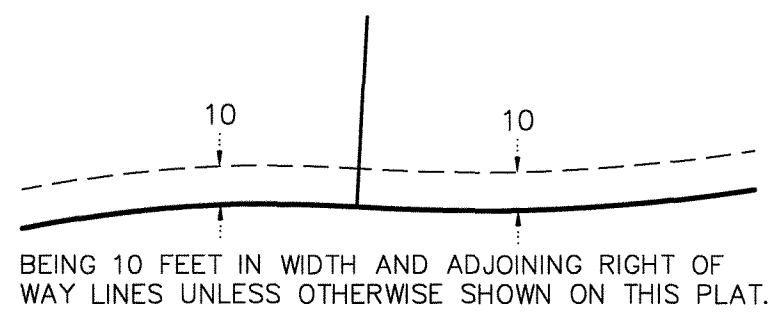
County Surveyor

I hereby certify that in accordance with Minnesota Statutes, Section 505.021, Subd. 11, this plat has been reviewed and approved this 6th day of May, 2014.

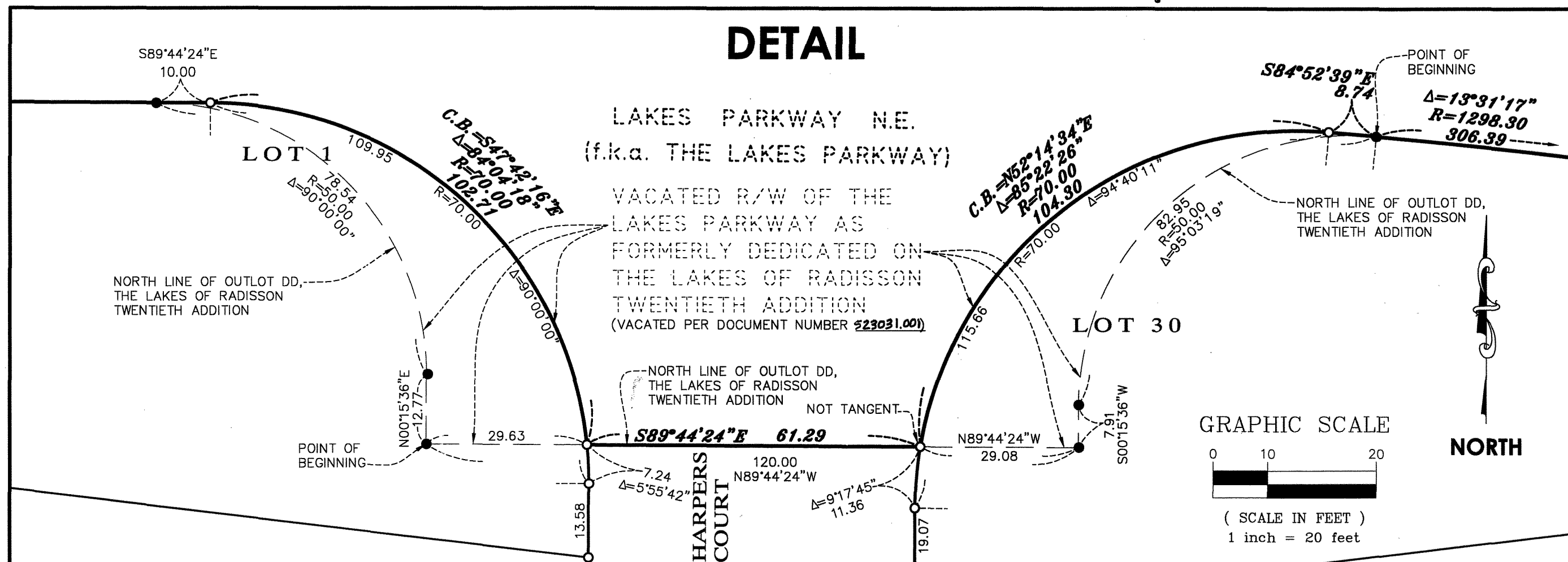
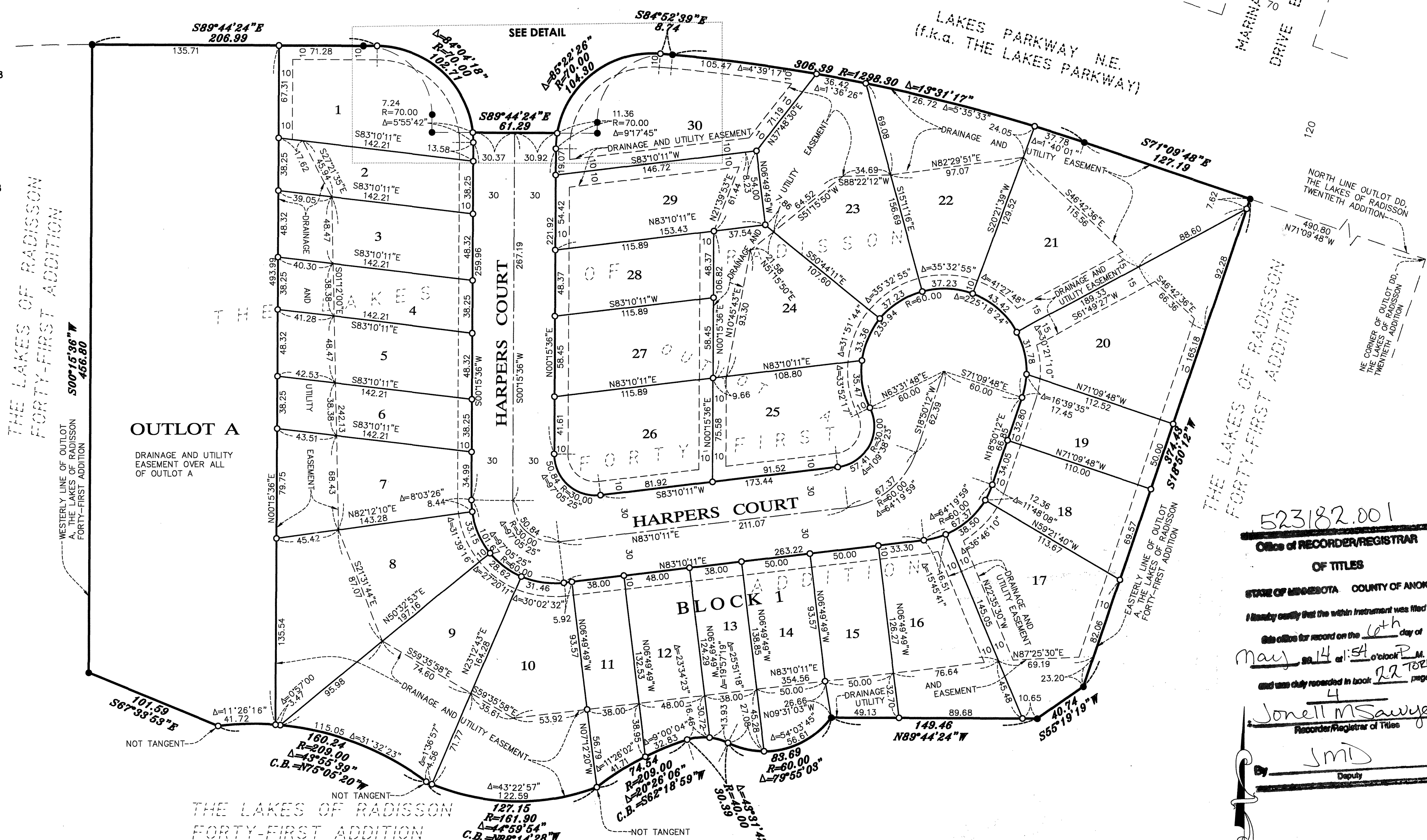
Larry D. Hight
Anoka County Surveyor



DRAINAGE AND UTILITY EASEMENTS ARE SHOWN THUS:



LAKES PARKWAY N.E.
(f.k.a. THE LAKES PARKWAY)



HEREBY CERTIFY THAT THE CURRENT AND DELINQUENT TAXES ON THE LANDS DESCRIBED WITHIN ARE PAID AND THE TRANSFER IS ENTERED
MAY 14 2014
JONETT M SAWYER
PROPERTY TAX ADMINISTRATOR
DEPUTY

City of Blaine
County of Anoka
Sec. 10, T31, R23

MARINA CIRCLE
DRIVE EAST

NORTH LINE OUTLOT DD,
THE LAKES OF RADISSON
TWENTIETH ADDITION

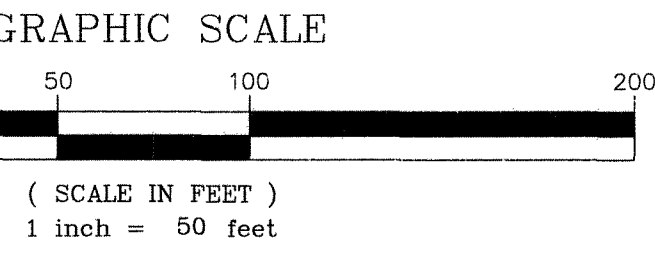
THE LAKES OF RADISSON
FORTY-FIRST ADDITION

EASTERN LINE OF OUTLOT DD,
THE LAKES OF RADISSON
FORTY-FIRST ADDITION

WESTERN LINE OF OUTLOT DD,
THE LAKES OF RADISSON
FORTY-FIRST ADDITION

523182.001
Office of RECORDER/REGISTRAR
OF TITLES
STATE OF MINNESOTA COUNTY OF ANOKA
I hereby certify that the within instrument was filed in this office for record on the 10th day of May, 2014 at 1:54 o'clock P.M. and was duly recorded in book 22 TORNS page 4
Jonett M Sawyer
Recorder/Registrar of Titles
JMD
Deputy

NORTH



○ DENOTES 1/2 INCH BY 14 INCH IRON PIPE MARKED BY RLS NO. 25341.
● DENOTES FOUND IRON MONUMENT
FOR THE PURPOSES OF THIS PLAT THE WESTERLY LINE OF OUTLOT A, THE LAKES OF RADISSON FORTY-FIRST ADDITION IS ASSUMED TO HAVE A BEARING OF SOUTH 00 DEGREES 15 MINUTES 36 SECONDS WEST.

\$56