

THE LAKES OF RADISSON SIXTIETH ADDITION

City of Blaine
County of Anoka
Sec. 10, T31, R23

Book 78 of Abstract Page 9

KNOW ALL PERSONS BY THESE PRESENTS: That Hans Hagen Homes, Inc., a Minnesota corporation, owner of the following described property:

Lots 6, 7, 8, 9, 10 and 11, Block 1, THE LAKES OF RADISSON FIFTY-SEVENTH ADDITION, Anoka County, Minnesota.

Has caused the same to be surveyed and platted as THE LAKES OF RADISSON SIXTIETH ADDITION and does hereby dedicate to the public for public use the drainage and utility easements as shown on this plat.

In witness whereof said Hans Hagen Homes, Inc., a Minnesota corporation, has caused these presents to be signed by its proper officer this 24th day of March, 2015.

HANS HAGEN HOMES, INC.

John P. Rask, as President
John P. Rask

STATE OF MINNESOTA
COUNTY OF Anoka

This instrument was acknowledged before me this 24th day of March, 2015 by John P. Rask, as President, of Hans Hagen Homes, Inc., a Minnesota corporation, on behalf of the corporation.

Jodi A. Byers
Jodi A. Byers
Notary Public, Anoka County, Minnesota
My Commission Expires January 31, 2018

I Daniel W. Obermiller do hereby certify that this plat was prepared by me or under my direct supervision; that I am a duly Licensed Land Surveyor in the State of Minnesota; that this plat is a correct representation of the boundary survey; that all mathematical data and labels are correctly designated on this plat; that all monuments depicted on this plat have been, or will be correctly set within one year; that all water boundaries and wet lands, as defined in Minnesota Statutes, Section 505.01, Subd. 3, as of the date of this certificate are shown and labeled on this plat; and all public ways are shown and labeled on this plat.

Dated this 24th day of March, 2015.

Daniel W. Obermiller
Daniel W. Obermiller, Licensed Land Surveyor
Minnesota License No. 25341

STATE OF MINNESOTA
COUNTY OF Anoka

This instrument was acknowledged before me this 24th day of March, 2015 by Daniel W. Obermiller.

Nicole A. Johnson
Nicole A. Johnson
Notary Public, Anoka County, Minnesota
My Commission Expires January 31, 2020

City Council, City of Blaine, Minnesota

This plat of THE LAKES OF RADISSON SIXTIETH ADDITION was approved and accepted by the City Council of the City of Blaine, Minnesota at a regular meeting thereof held this 19th day of March, 2015, and said plat is in compliance with the provisions of Minnesota Statutes, Section 505.03, Subd. 2.

City Council, City of Blaine, Minnesota

By Garby Mayor
By Collins Clerk

County Surveyor

I hereby certify that in accordance with Minnesota Statutes, Section 505.021, Subd. 11, this plat has been reviewed and approved this 9th day of April, 2015.

Larry D. Holm by Charles F. Sitten, Deputy
Larry D. Holm
Anoka County Surveyor

COUNTY AUDITOR/TREASURER

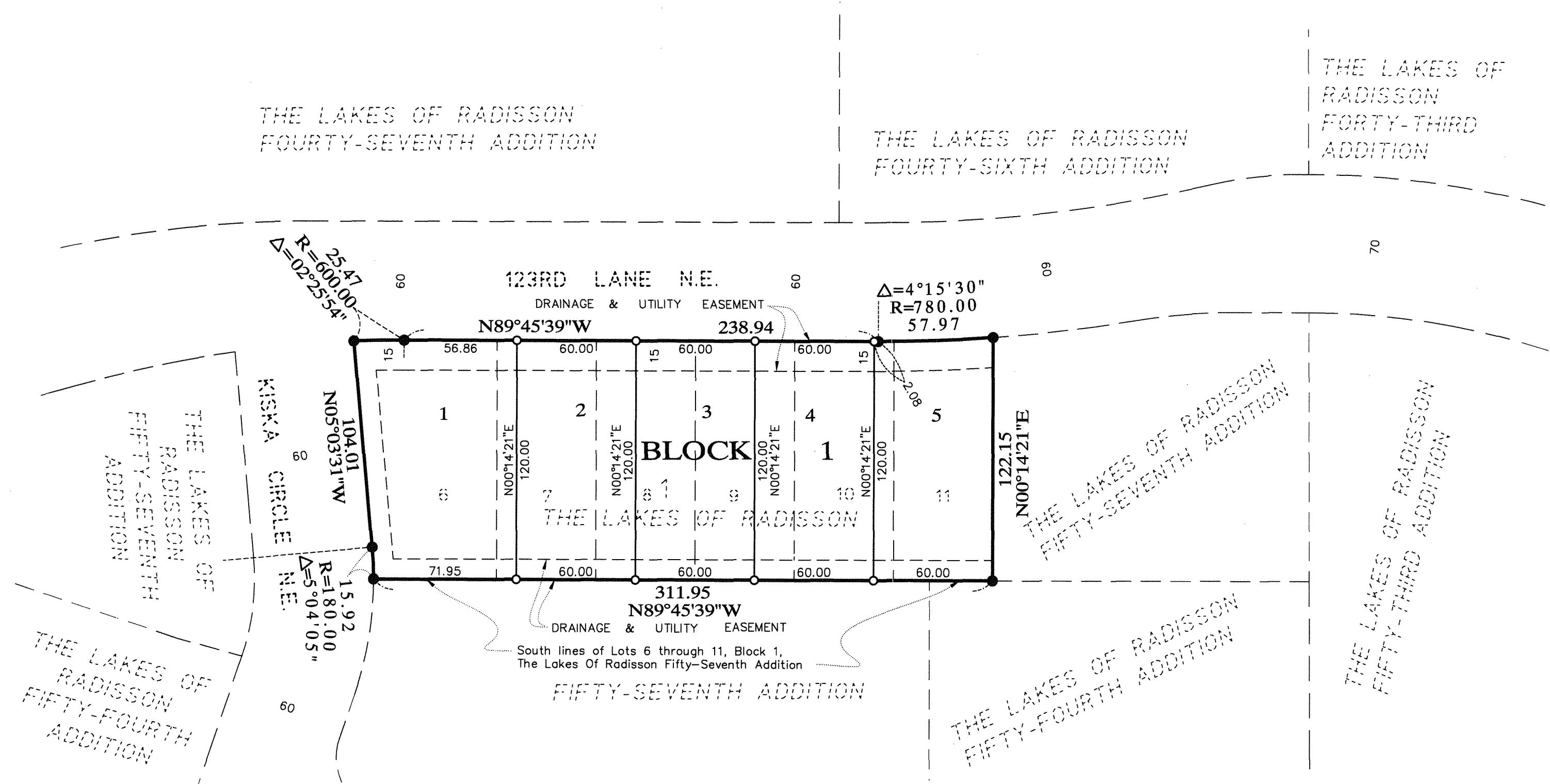
Pursuant to Minnesota Statutes, Section 505.021, Subd. 9, taxes payable in the year 2015 on the land hereinbefore described have been paid. Also, pursuant to Minnesota Statutes, Section 272.12, there are no delinquent taxes and transfer entered this 9 day of April, 2015.

Jonell M Sawyer
Property Tax Administrator
By Maria Garret, Deputy

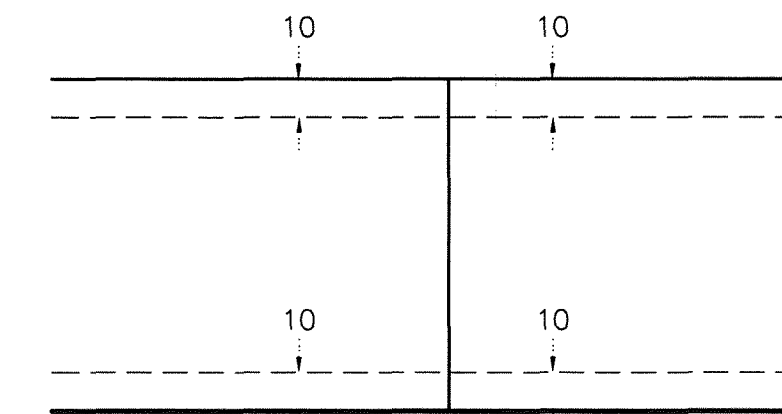
COUNTY RECORDER/REGISTRAR OF TITLES
COUNTY OF ANOKA, STATE OF MINNESOTA

I hereby certify that this plat of THE LAKES OF RADISSON SIXTIETH ADDITION was filed in the office of the County Recorder/Registrar of Titles for public record on this 9 day of April, 2015, at 10:29 o'clock A.M. and was duly recorded in Book 18 Page 9, as Document Number 2104725.001.

Jonell M Sawyer
County Recorder/Registrar of Titles
By Maria Garret, Deputy



DRAINAGE AND UTILITY EASEMENTS ARE SHOWN THUS:



BEING 10 FEET IN WIDTH AND ADJOINING RIGHT OF WAY LINES AND REAR LOT LINES UNLESS OTHERWISE SHOWN ON THIS PLAT.

- DENOTES 1/2 INCH BY 14 INCH IRON PIPE MARKED BY RLS NO. 25341.
- DENOTES FOUND IRON MONUMENT

FOR THE PURPOSES OF THIS PLAT THE SOUTH LINES OF LOTS 6 THROUGH 11, BLOCK 1, THE LAKES OF RADISSON FIFTY-SEVENTH ADDITION ARE ASSUMED TO HAVE A BEARING OF N89° 45' 39\"

