

OFFICIAL PLAT

THE LAKES OF RADISSON SIXTH ADDITION

Bk 65 of Abst, pg 50
CITY OF BLAINE
COUNTY OF ANOKA
SECS. 9 & 10, TWP. 31, RNG. 23

1856885
OFFICE OF COUNTY RECORDER
STATE OF MINNESOTA, COUNTY OF ANOKA
I hereby certify that the within instrument was duly recorded for record on the 1 OCT 1 2003
at 9:45 o'clock A M
in book 65 50
Maureen J. Davine
By GKE

KNOW ALL MEN BY THESE PRESENTS: That Main Street 1000, LLC, a Limited Liability Company, owner, and Village Bank, a Minnesota Corporation, mortgagee of the following described property situated in the County of Anoka, State of Minnesota, to wit:

- Outlot J, THE LAKES OF RADISSON
AND
Outlot F, THE LAKES OF RADISSON FIFTH ADDITION

Have caused the same to be surveyed and platted as THE LAKES OF RADISSON SIXTH ADDITION and do hereby donate and dedicate to the public for public use forever the drainage and utility easements as shown on this plat. In witness whereof said Main Street 1000, LLC, a Limited Liability Company, has caused these presents to be signed by its proper officer this 19th day of September 2003, and in witness whereof said Village Bank, a Minnesota Corporation, has caused these presents to be signed by its proper officer this 19th day of September, 2003.

MAIN STREET 1000, LLC
Anthony J. Emmerich, Chief Manager

VILLAGE BANK
Lawrence J. Schminski, President

STATE OF MINNESOTA
COUNTY OF ANOKA

The foregoing instrument was acknowledged before me this 19th day of September, 2003 by Anthony J. Emmerich, as chief manager of Main Street 1000, LLC, a Limited Liability Company, on behalf of said company.

REBECCA A. BAUNE
NOTARY PUBLIC - MINNESOTA
MY COMMISSION EXPIRES JANUARY 31, 2005

Rebecca A. Baune
Notary Public, Anoka County, Minnesota
My Commission Expires January 31, 2005

STATE OF MINNESOTA
COUNTY OF ANOKA

The foregoing instrument was acknowledged before me this 19th day of September, 2003 by Lawrence J. Schminski, as president of Village Bank, a Minnesota Corporation, on behalf of said corporation.

JANET R. THOMAS
NOTARY PUBLIC - MINNESOTA
MY COMM. EXP. 1-31-2005

Janet R. Thomas
Notary Public, Anoka County, Minnesota
My Commission Expires January 31, 2005

I hereby certify that I have surveyed and platted the property described on this plat as THE LAKES OF RADISSON SIXTH ADDITION; that this plat is a correct representation of the survey; that all distances are correctly shown on the plat in feet and hundredths of a foot; that all monuments have been correctly placed in the ground as shown or will be placed as required by the local governmental unit; that the outside boundary lines are correctly designated on the plat; and that there are no wetlands, in accordance with section 505.02 Subdivision 1, or public highways to be designated other than as shown.

STATE OF MINNESOTA
COUNTY OF ANOKA

The foregoing instrument was acknowledged before me this 18th day of SEPTEMBER 2003 by Terrence E. Rothenbacher, Land Surveyor Minnesota License No. 20595.

CHRISTOPHER E. SHARP
NOTARY PUBLIC
MY COMM. EXP. 01/31/2005

Christopher E. Sharp
Notary Public, ANOKA County, Minnesota
My Commission Expires January 31, 2005

BLAINE, MINNESOTA

This plat of THE LAKES OF RADISSON SIXTH ADDITION was approved by the City Council of the City of Blaine, Minnesota, at a regular meeting thereof held this 4th day of September, 2003. If applicable, the written comments and recommendations of the Commissioner of Transportation and the County Highway Engineer have been received by the City or the prescribed 30 day period has elapsed without receipt of such comments and recommendations, as provided by Minnesota Statutes 505.03, Section 2.

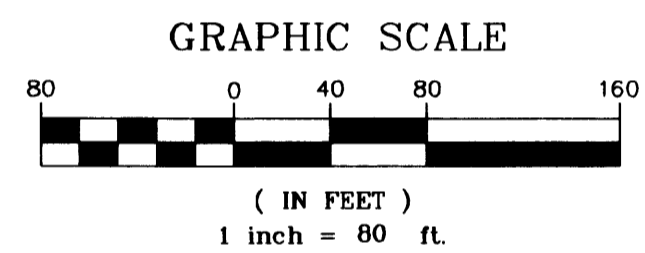
By: [Signature] Mayor

By: [Signature] City Clerk

Checked and approved this 30th day of SEPT. 2003.

By: [Signature] Anoka County Surveyor

2003135471 \$ 55.00
2003135469 \$ 1810.00



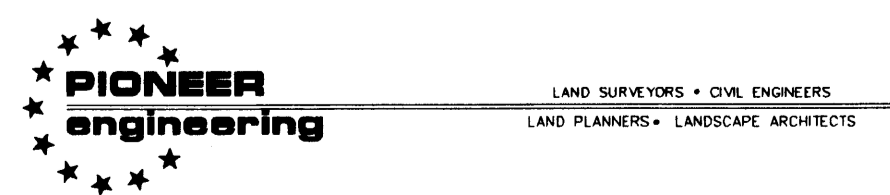
- Denotes iron monument found
○ Denotes 1/2 inch by 14 inch iron monument set and marked with license number 20595

All monuments required by Minnesota Statute, whether shown on this plat or not, will be set within one year of the recording date of this plat, and shall be evidenced by a 1/2 inch by 14 inch iron pipe marked by RLS 20595.

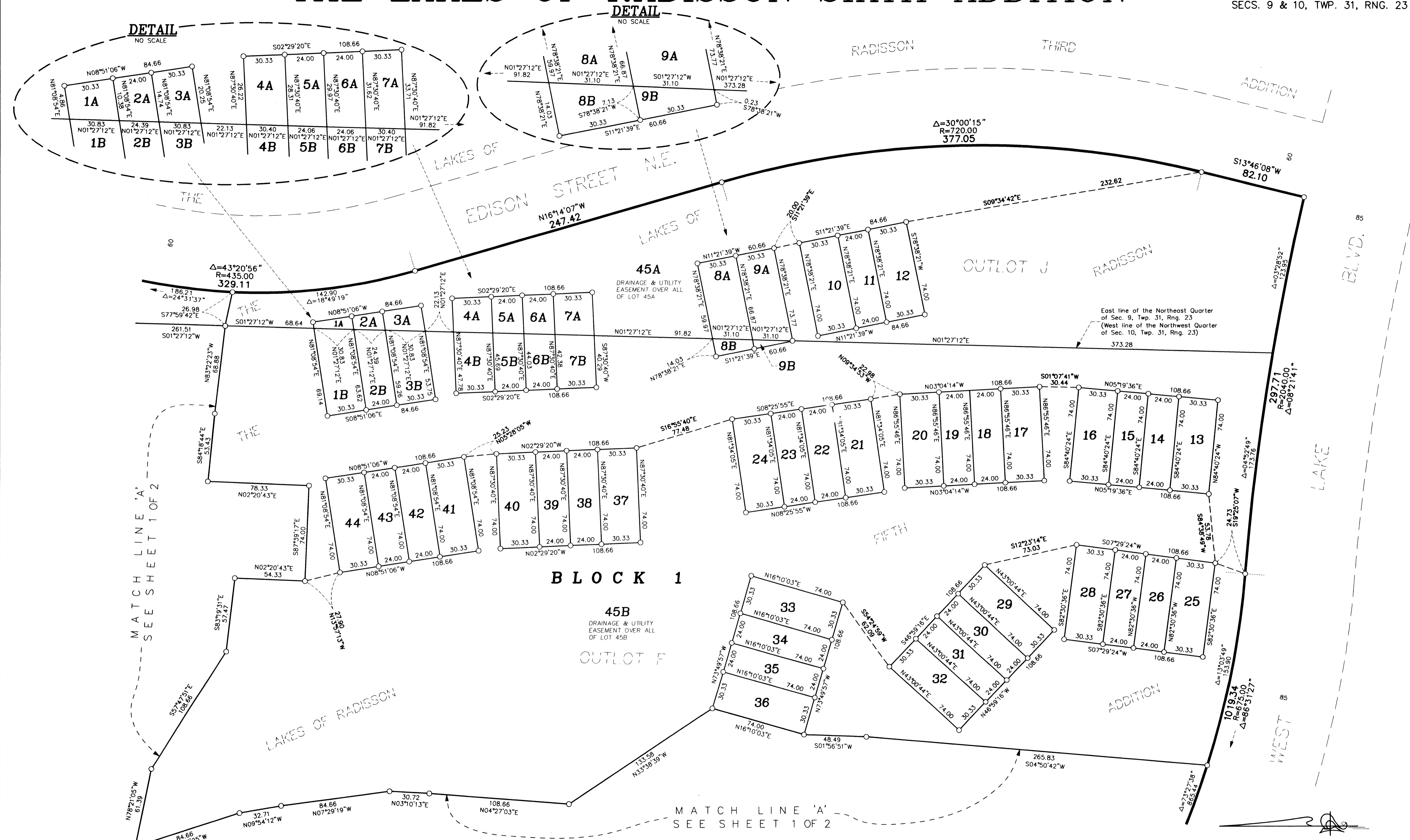
BEARINGS ARE BASED ON THE NORTH LINE OF OUTLOT F, THE LAKES OF RADISSON FIFTH ADDITION, WHICH IS ASSUMED TO HAVE A BEARING OF NORTH 89°38'21" WEST.

I HEREBY CERTIFY THAT THE CURRENT AND DELINQUENT TAXES ON THE LANDS DESCRIBED WITHIN THIS PLAT AND THE TAXES THEREON ENTERED Oct 1 2003
PROPERTY TAX ADMINISTRATOR
BY: [Signature] DEPUTY PROPERTY TAX ADMINISTRATOR

Office of REGISTRAR OF TITLES
STATE OF MINNESOTA
COUNTY OF ANOKA 447054.0
I hereby certify that the within instrument was filed in this office on October 1, 2003 at 9:45 o'clock A M
Maureen J. Davine, Registrar of Titles
By GKE Deputy Registrar of Titles



THE LAKES OF RADISSON SIXTH ADDITION

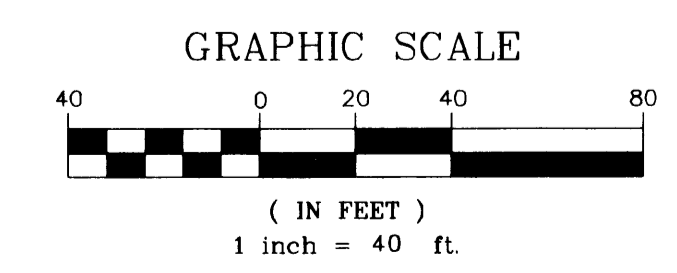


PIONEER engineering
 LAND SURVEYORS • CIVIL ENGINEERS
 LAND PLANNERS • LANDSCAPE ARCHITECTS

○ Denotes 1/2 inch by 14 inch iron monument set and marked with license number 20595

All monuments required by Minnesota Statute, whether shown on this plat or not, will be set within one year of the recording date of this plat, and shall be evidenced by a 1/2 inch by 14 inch iron pipe marked by RLS 20595.

BEARINGS ARE BASED ON THE NORTH LINE OF OUTLOT F, THE LAKES OF RADISSON FIFTH ADDITION, WHICH IS ASSUMED TO HAVE A BEARING OF NORTH $89^{\circ}38'21''$ WEST.



2003135469 \$18.00