

THE SANCTUARY TENTH ADDITION

KNOW ALL PERSONS BY THESE PRESENTS: That Gernette Development, L.L.C., a Minnesota limited liability company, fee owner of the following described property situated in the State of Minnesota, County of Anoka, to wit:

Outlot A, THE SANCTUARY EIGHTH ADDITION, Anoka County, Minnesota.

Has caused the same to be surveyed and platted as THE SANCTUARY TENTH ADDITION and does hereby dedicate to the public for public use the public way and the drainage and utility easements as shown on this plat.

In witness whereof said Gernette Development, L.L.C., a Minnesota limited liability company, has caused these presents to be signed by its proper officer this 8th day of MARCH, 2010.

Gernette Development, L.L.C.

Gerhard G. Larson Chief Manager
Gerhard G. Larson

STATE OF MINNESOTA
COUNTY OF KANSAH

This instrument was acknowledged before me this 26th day of MARCH, 2010, by Gerhard G. Larson, as Chief Manager of Gernette Development, L.L.C., a Minnesota limited liability company.

Debbie L. Annick
Debbie L. Annick
Notary Public, KANSAH County, Minnesota
My Commission Expires Jan 31, 2017

I, Jason E. Rud, do hereby certify that this plat was prepared by me or under my direct supervision; that I am a duly Licensed Land Surveyor in the State of Minnesota; that this plat is a correct representation of the boundary survey, that all mathematical data and labels are correctly designated on this plat; that all monuments depicted on this plat have been, or will be correctly set within one year; that all water boundaries and wet lands, as defined in Minnesota Statutes, Section 505.01, Subd. 3, as of the date of this certificate are shown and labeled on this plat; and all public ways are shown and labeled on this plat.

Dated this 25th day of March, 2010.

Jason E. Rud
Jason E. Rud, Licensed Land Surveyor
Minnesota Registration No. 41578.

STATE OF MINNESOTA
COUNTY OF KANSAH

This instrument was acknowledged before me this 25th day of MARCH, 2010, by Jason E. Rud.

Debbie L. Annick
Debbie L. Annick
Notary Public, KANSAH County, Minnesota
My Commission Expires Jan 31, 2017

City Council, City of Blaine, Minnesota

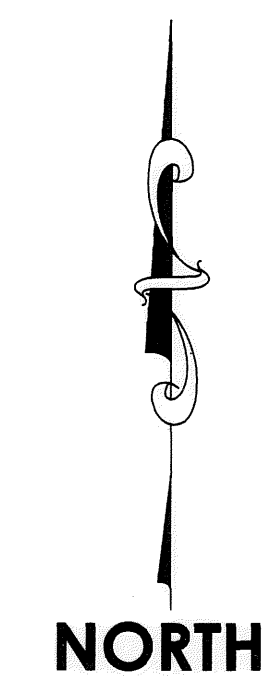
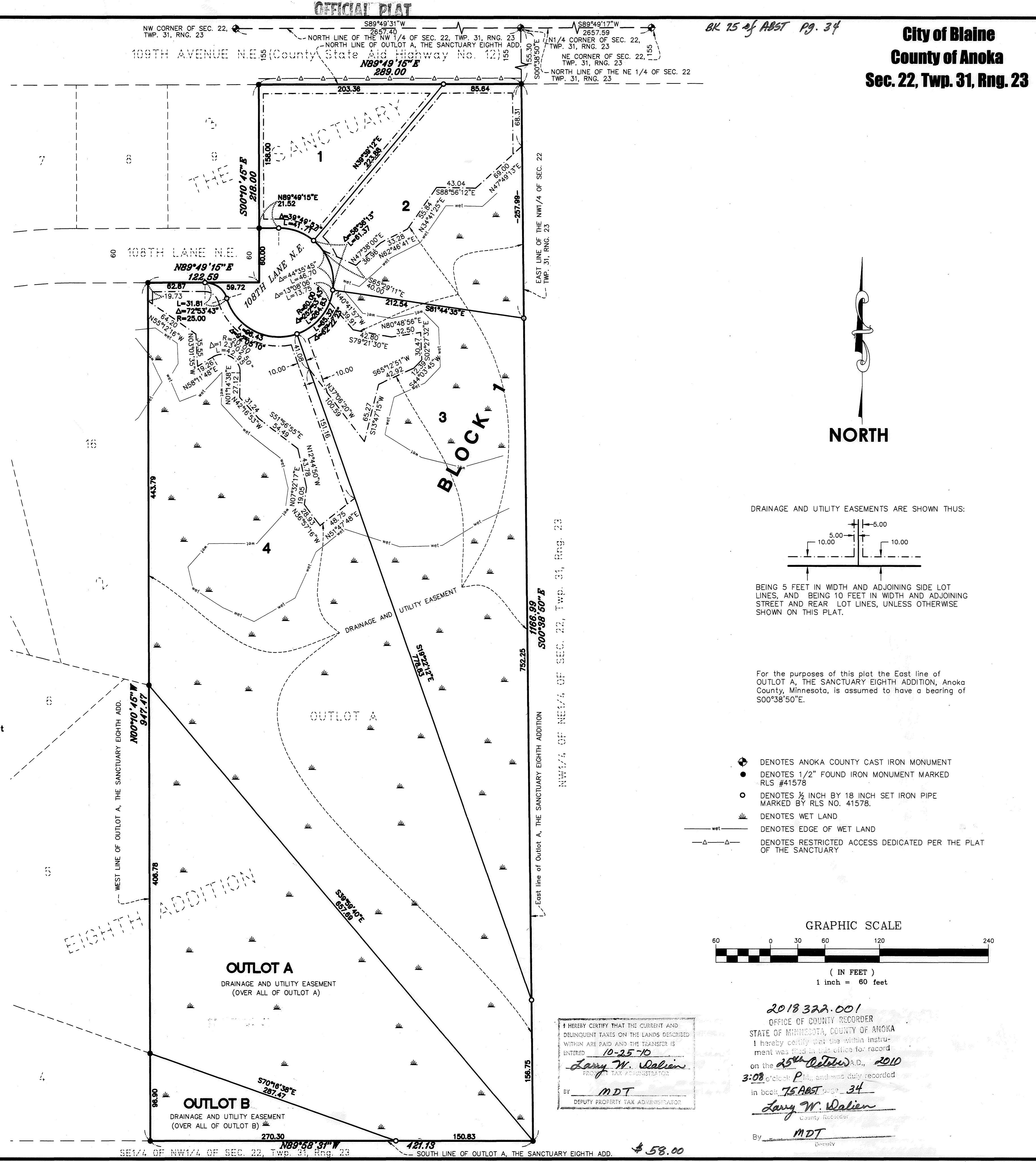
This plat of THE SANCTUARY TENTH ADDITION was approved and accepted by the City Council of the City of Blaine, Minnesota at a regular meeting thereof held this 2nd day of December, 2009, and said plat is in compliance with the provisions of Minnesota Statutes, Section 505.03, Subd. 2.

City Council, City of Blaine, Minnesota

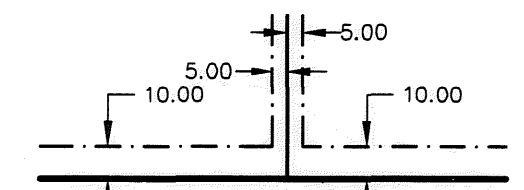
By Tom Ryan Mayor By Jan M. Cross Clerk

I hereby certify that in accordance with Minnesota Statutes, Section 505.021, Subd. 11, this plat has been reviewed and approved this 25th day of October, 2010.

Larry D. Holm by John A. Gaud
Larry D. Holm
Anoka County Surveyor



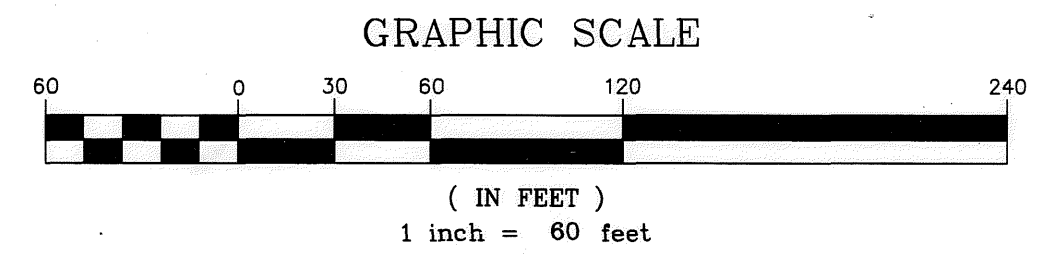
DRAINAGE AND UTILITY EASEMENTS ARE SHOWN THUS:



BEING 5 FEET IN WIDTH AND ADJOINING SIDE LOT LINES, AND BEING 10 FEET IN WIDTH AND ADJOINING STREET AND REAR LOT LINES, UNLESS OTHERWISE SHOWN ON THIS PLAT.

For the purposes of this plat the East line of OUTLOT A, THE SANCTUARY EIGHTH ADDITION, Anoka County, Minnesota, is assumed to have a bearing of S00°38'50\"/>

- DENOTES ANOKA COUNTY CAST IRON MONUMENT
- DENOTES 1/2" FOUND IRON MONUMENT MARKED RLS #41578
- DENOTES 1/2 INCH BY 18 INCH SET IRON PIPE MARKED BY RLS NO. 41578.
- ≡ DENOTES WET LAND
- ≡ DENOTES EDGE OF WET LAND
- △—△— DENOTES RESTRICTED ACCESS DEDICATED PER THE PLAT OF THE SANCTUARY



HEREBY CERTIFY THAT THE CURRENT AND DELINQUENT TAXES ON THE LANDS DESCRIBED WITHIN ARE PAID AND THE TRANSFER IS ENTERED
10-25-10
Larry W. Dalien
PROPERTY TAX ADMINISTRATOR

2018 322.001
OFFICE OF COUNTY RECORDER
STATE OF MINNESOTA, COUNTY OF ANOKA
I hereby certify that the within instrument was filed in this office for record on the 25th October A.D., 2010
3:08 o'clock P.M., and was duly recorded in book 75 ABST page 34
Larry W. Dalien
County Recorder
By MDT Deputy



\$ 58.00