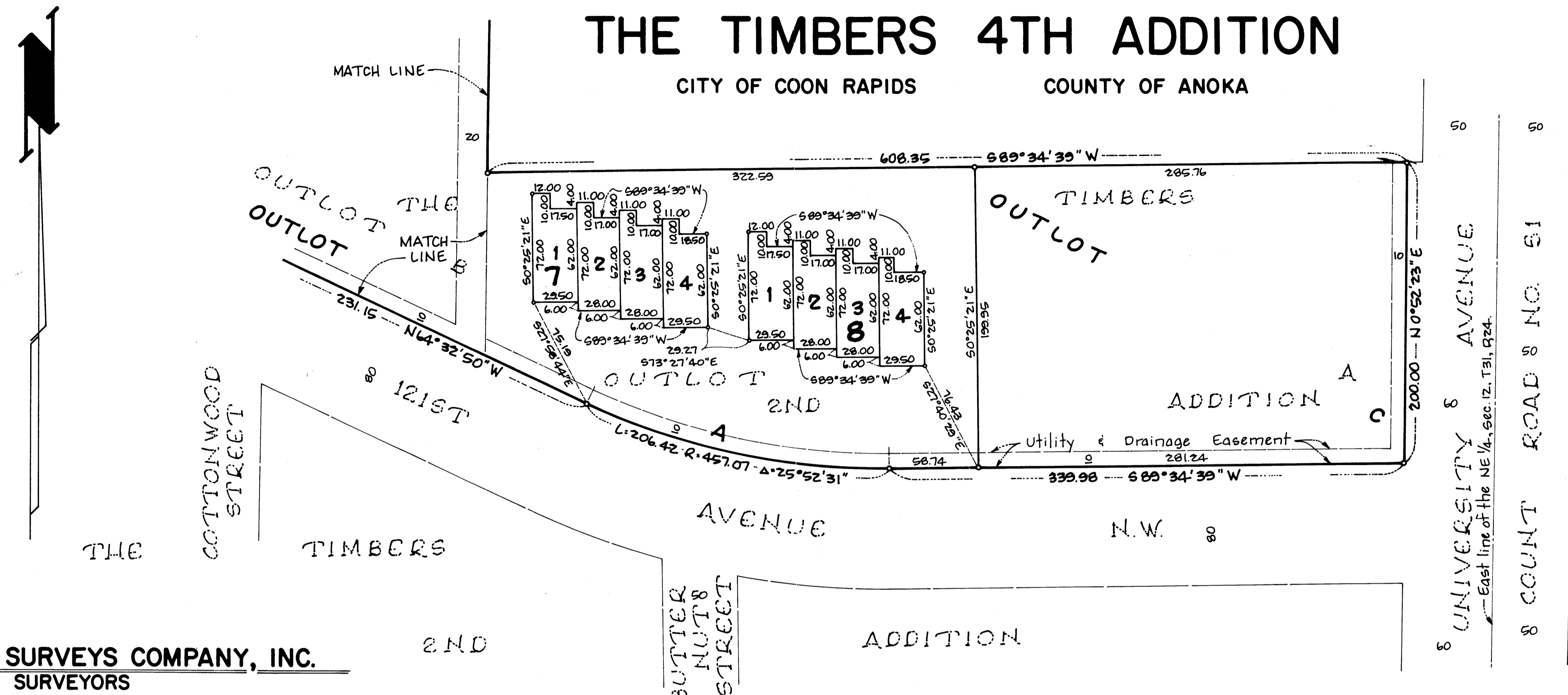


THE TIMBERS 4TH ADDITION

CITY OF COON RAPIDS COUNTY OF ANOKA



o - Denotes Iron Monument

Scale in Feet
 50 0 50 100
 Scale: 1 inch = 50 feet

For the purposes of this plat the West line of OUTLOTS B & C, THE TIMBERS 2ND ADDITION is assumed to bear $91^{\circ}01'36''$ W

LOT SURVEYS COMPANY, INC.
 LAND SURVEYORS

KNOW ALL MEN BY THESE PRESENTS: That Gorham Builders, Inc., a Minnesota corporation, owner and proprietor, of the following described property situated in the County of Anoka, State of Minnesota, to-wit:

Outlots A, B, and C, THE TIMBERS 2ND ADDITION, according to the plat thereof on file and of record in the office of the County Recorder in and for said County.

Has caused the same to be surveyed and platted as THE TIMBERS 4TH ADDITION and does hereby donate and dedicate to the public for public use forever the Streets, Avenue and utility and drainage easements as shown on the plat.

Also dedicating to the County of Anoka, the right of access to County Road No. 51 from Outlot C. In witness whereof said Gorham Builders, Inc., a Minnesota corporation, has caused these presents to be signed by its proper officer and its corporate seal to be hereunto affixed this 26th day of January 1984.

Signed:
Gary M. Gorham
 Gary M. Gorham, president

State of Minnesota
 County of HENNEPIN The foregoing instrument was acknowledged before me this 26th day of JANUARY 1984, by Gary M. Gorham, president of Gorham Builders, Inc., a Minnesota corporation, on behalf of the corporation.

Milton E. Hyland
 Notary Public, HENNEPIN Co., Minn.
 My Commission Expires Nov 19, 1987

SEAL
 LOT SURVEYS COMPANY, INC.
 CORPORATION

I HEREBY CERTIFY THAT THE TAXES PAYABLE IN THE YEAR 1984 ON THE LANDS DESCRIBED WITHIN ARE PAID
Donald C. Anderson
 Anoka County Treasurer

"NO DELINQUENT TAXES AND TRANSFER DUTIES"
Feb 6, 1984
Charles R. Johnson
 Auditor, Anoka County
 BY P. P. Kaminski
 Deputy

I hereby certify that I have surveyed and platted the property described on this plat as THE TIMBERS 4TH ADDITION; that this plat is a correct representation of said survey; that the distances are correctly shown on said plat in feet and hundredths of a foot; that all monuments have been correctly placed in the ground as shown on said plat; that the outside boundary lines are correctly designated on said plat; and that there are no wetlands or public highways to be designated other than as shown thereon.

Raymond A. Prusch
 Raymond A. Prusch, Registered Land Surveyor.
 Minnesota Registration No. 6743

State of Minnesota
 County of HENNEPIN The foregoing instrument was acknowledged this 25th day of JANUARY 1984, by Raymond A. Prusch, Registered Land Surveyor.

Milton E. Hyland
 Milton E. Hyland - Notary Public, Hennepin County, Minnesota
 My Commission Expires November 19, 1987

The plat of the THE TIMBERS 4TH ADDITION was approved by the Planning and Zoning Commission of the City of Coon Rapids at a regular meeting thereof held this 17th day of NOVEMBER 1983.

By Donna M. Naue Chairman By David A. Zopf Clerk

We hereby certify that the City Council of the City of Coon Rapids, Anoka County, Minnesota duly accepted and approved the plat of the THE TIMBERS 4TH ADDITION, at a regular meeting thereof held this 24th day of JANUARY 1984.

By Robert B. Lewis Mayor By Lorraine M. Menzies Clerk

Checked and approved this 6th day of February 1984.

Robert W. Anderson
 Anoka County Surveyor

OFFICE OF COUNTY RECORDER
 STATE OF MINNESOTA, COUNTY OF ANOKA
 I hereby certify that the within instrument was filed in this office for record on the FEB 6 1984 A.D., 1984 at 9:4 o'clock A.M., and was duly recorded in book 330F Page 41
Del J. Campbell
 County Recorder
P. R. Williams
 Deputy

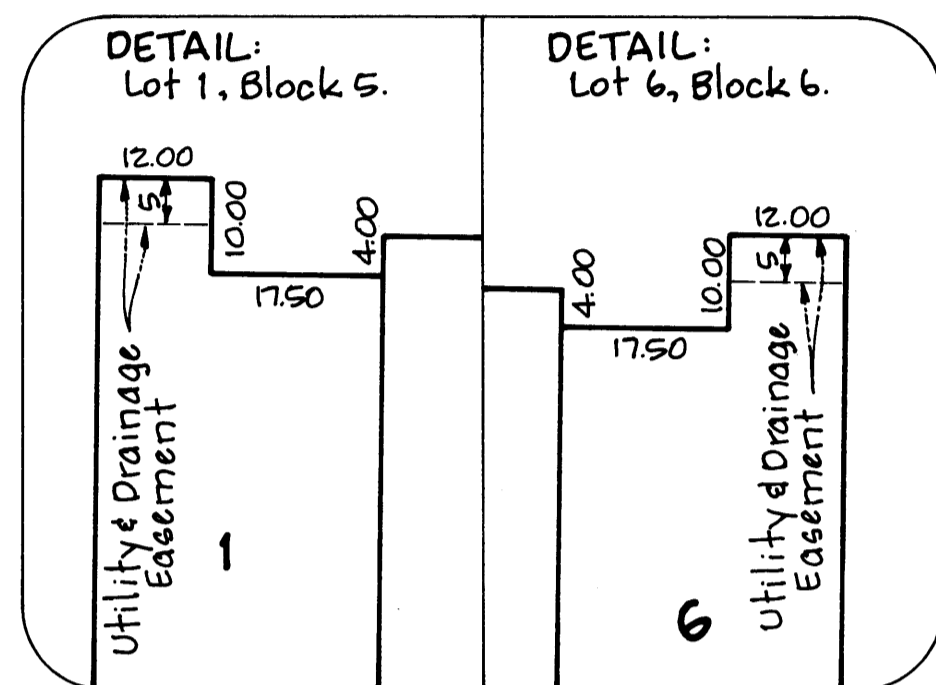
ACPD 22745 FEB 6 84 30.50

THE TIMBERS 4TH ADDITION

CITY OF COON RAPIDS

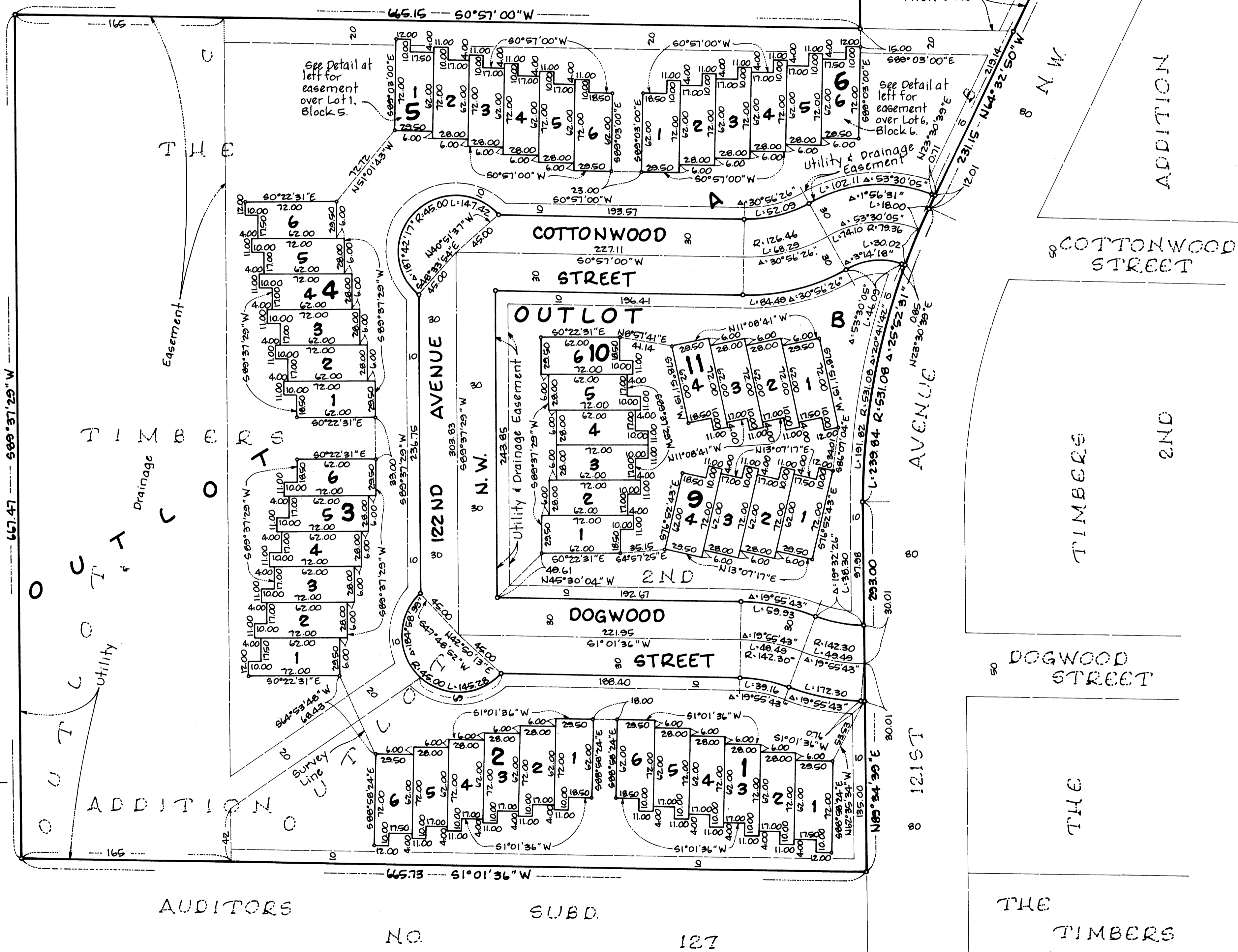
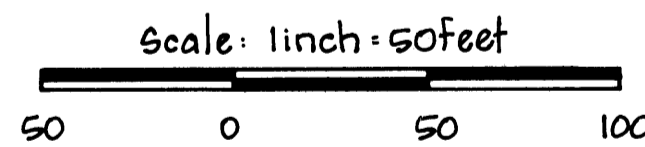
COUNTY OF ANOKA

LOT SURVEYS COMPANY, INC.
LAND SURVEYORS



o - Denotes Iron Monument

For the purposes of this plat the West line of OUTLOTS B & C, THE TIMBERS 2ND ADDITION is assumed to bear $S1^{\circ}01'36''W$.



AUDITORS

SUBD.

NO.

127

THE
TIMBERS