

OFFICE OF REGISTER OF DEEDS  
STATE OF MINNESOTA, COUNTY OF ANOKA  
I hereby certify that the within instrument was filed in this office for record on this day of April, 1960, at 11 o'clock AM and was duly recorded in Book 13 of said office at page 105.

*Herbudeck & Sonnet*  
*By Myrna M. Hervey, Deputy*

• CITY OF COON RAPIDS  
• COUNTY OF ANOKA



KNOW ALL MEN BY THESE PRESENTS: that we, Rudolph J. Beckenbach, also known as Rudolph Beckenbach, and Bernice Beckenbach, also known as Bernice S. Beckenbach, his wife, owners and proprietors and Land Holding Company, a partnership comprised of O. B. Thompson, also known as Olin B. Thompson, and Dennis O. Thompson, contract purchasers of the following described property situate in the State of Minnesota and County of Anoka to-wit: That part of Lot 1, Auditor's Subdivision N<sup>o</sup> 74, the Southeast 1/4 of the Northeast 1/4 and of the Northeast 1/4 of Section 16, Township 31, Range 24 described as follows: Beginning at a point on the East line of said Lot 1, Auditor's Subdivision N<sup>o</sup> 74, distant 1201.28 feet North of the Southeast corner thereof; thence N9°12'35"W, a distance of 237.41 feet; thence on a tangential curve to the right, the curve a distance of 84.17 feet; thence N0°37'42"W, a distance of 25 feet; thence on a tangential curve to the right, the curve a distance of 270 feet more or less to the Southwesterly line of the right of way of the Great Northern Railway Co.; thence Southwesterly along said right of way line to its intersection with the East line of the Southwest 1/4 of the Northeast 1/4 of the Northeast 1/4 of Section 16, Township 31, Range 24, distant 290 feet North of the Southeast corner thereof; thence N89°03'45"E, and parallel with the South line of said Southeast 1/4 of the Northeast 1/4 of Section 16, Township 31, Range 24, a distance of 194.02 feet; thence S10°00'06"W, a distance of 252.12 feet to the Northeast 1/4 of the Southeast 1/4 of the Northeast 1/4 of Section 16, Township 31, Range 24, North and East of the point of beginning; have caused the same to be surveyed and platted as THOMPSON HEIGHTS 2<sup>ND</sup> ADDITION; and do hereby donate and dedicate to the public for the public use forever the Streets, Avenues, Lane, Drive and Boulevard as shown on the plat on Sheet 2, also subject to Utility and Drainage Easements as shown on said plat for the use of municipality or other public Utilities. In witness whereof said Rudolph J. Beckenbach, his wife, have hereunto set their hands and seals this 22<sup>ND</sup> day of April, A. D. 1960, also in witness whereof said Land Holding Company has caused these presents to be signed by Olin B. Thompson, partners in said Co-Partnership; this 22<sup>ND</sup> day of April, A. D. 1960.

Excepting from the above described land the three following parts thereof:  
The East 900 feet of the South 290 feet of the Southeast 1/4 of Section 16, Township 31, Range 24;  
A tract of land 30 feet in width, the center line of which is described as follows: Commencing at a point on the center line of Trunk Highway N<sup>o</sup> 10, which point is 222.26 feet Southwesterly from the intersection of said center line with the South line of said Southeast 1/4 of the Northeast 1/4 of the Northeast 1/4 of Section 16, Township 31, Range 24 described as follows: Beginning at a point on the West line of said Southeast 1/4 of the Northeast 1/4 of Section 16, Township 31, Range 24, distant 290 feet North of the Southeast corner thereof; thence N89°03'45"E, and parallel with the South line of said Southeast 1/4 of the Northeast 1/4 of Section 16, Township 31, Range 24, a distance of 194.02 feet; thence S10°00'06"W, a distance of 252.12 feet to the Northeast 1/4 of the Southeast 1/4 of the Northeast 1/4 of Section 16, Township 31, Range 24, North and East of the point of beginning; have caused the same to be surveyed and platted as THOMPSON HEIGHTS 2<sup>ND</sup> ADDITION; and do hereby donate and dedicate to the public for the public use forever the Streets, Avenues, Lane, Drive and Boulevard as shown on the plat on Sheet 2, also subject to Utility and Drainage Easements as shown on said plat for the use of municipality or other public Utilities. In witness whereof said Rudolph J. Beckenbach, his wife, have hereunto set their hands and seals this 22<sup>ND</sup> day of April, A. D. 1960, also in witness whereof said Land Holding Company has caused these presents to be signed by Olin B. Thompson, partners in said Co-Partnership; this 22<sup>ND</sup> day of April, A. D. 1960.

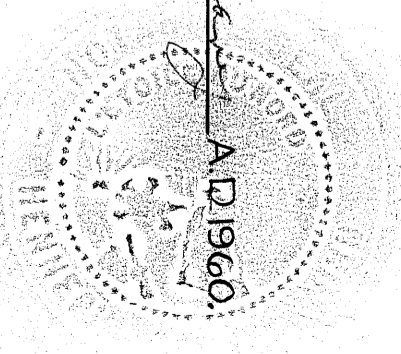
In Presence of: Signed by: In Presence of: LAND HOLDING COMPANY In Presence of: Signed by:  
*Olin B. Thompson* *Rudolph J. Beckenbach* *Olin B. Thompson* *Dennis O. Thompson*  
*Bernice Beckenbach* *Olin B. Thompson* *Dennis O. Thompson* *Dennis O. Thompson*

*Walter A. Miller*  
Notary Public, Hennepin County, Minnesota  
My Commission Expires April 19 1960

*John J. Williams*  
Notary Public, Hennepin County, Minnesota  
My Commission Expires \_\_\_\_\_

*Walter A. Miller*  
Notary Public, Hennepin County, Minnesota  
My Commission Expires April 14 1967

*Walter A. Miller*  
Notary Public, Hennepin County, Minnesota  
My Commission Expires Jan. 14 1967



I hereby certify that I have surveyed and platted the property described on this plat as THOMPSON HEIGHTS 2<sup>ND</sup> ADDITION; that this plat is a correct representation of said survey; that all distances are correctly shown on the plat in feet and decimals of a foot; that the monuments for guidance of future surveys have been correctly placed in the ground as shown on the plat; that the outside boundary lines are correctly designated on said plat and that there are no wetlands or public highways to be designated on said plat other than as shown thereon.

State of Minnesota } s.s. Above certificate subscribed and sworn to before me, a Notary Public, within and for said County and State this 11<sup>TH</sup> day of April, A. D. 1960.  
County of Hennepin }

CITY OF COON RAPIDS, ANOKA COUNTY, MINNESOTA

by Herb S. Johnson its Chairman  
by Harold J. Berg its Clerk

CITY OF COON RAPIDS, ANOKA COUNTY, MINNESOTA  
by Joseph L. Casey its Mayor  
by Grove Sells its Clerk

Checked and approved this 12<sup>TH</sup> day of April, A. D. 1960.

Harold J. Berg  
Anoka County Surveyor

Walter A. Miller  
Notary Public

**MINDER ENGINEERING CO., INC.**

Engineers • Surveyors

TAXES PAID  
This 12<sup>TH</sup> day of April, 1960.  
Walter A. Miller  
Notary Public

Walter A. Miller  
Notary Public

Exempt from state deed tax  
Walter A. Miller  
County Treasurer

I HEREBY CERTIFY THAT TAXES FOR THE YEAR 1959  
ON THE LANDS DESCRIBED WITHIN ARE PAID  
Walter A. Miller  
County Treasurer

# Tompson Heights

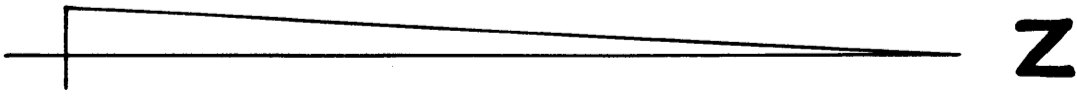
2nd

Addition

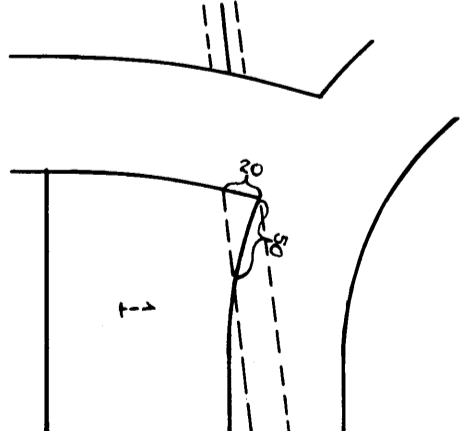
CITY OF COON RAPIDS  
COUNTY OF ANOKA

JANUARY • 1960

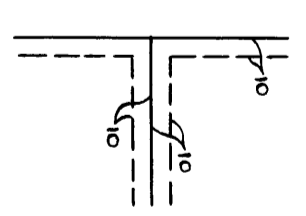
BEARINGS ARE ASSUMED  
° DENOTES IRON MONUMENT



SCALE 1"=160'



DETAIL OF UTILITY EASEMENT LOCATED ON THE NORTHWEST CORNER OF LOT 1, BLOCK 5.



DRAINAGE & UTILITY EASEMENTS TO BE 10 FT. UNLESS OTHERWISE SPECIFIED.

MINDER ENGINEERING CO., INC.  
*Engineers • Surveyors*

