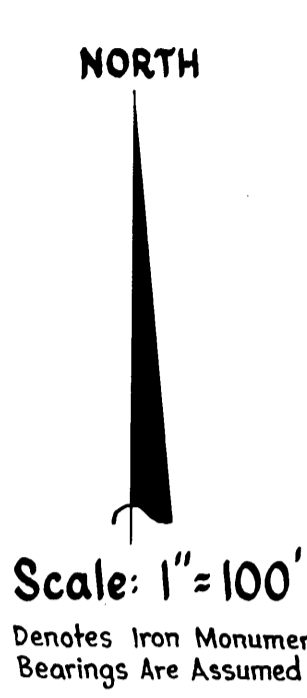
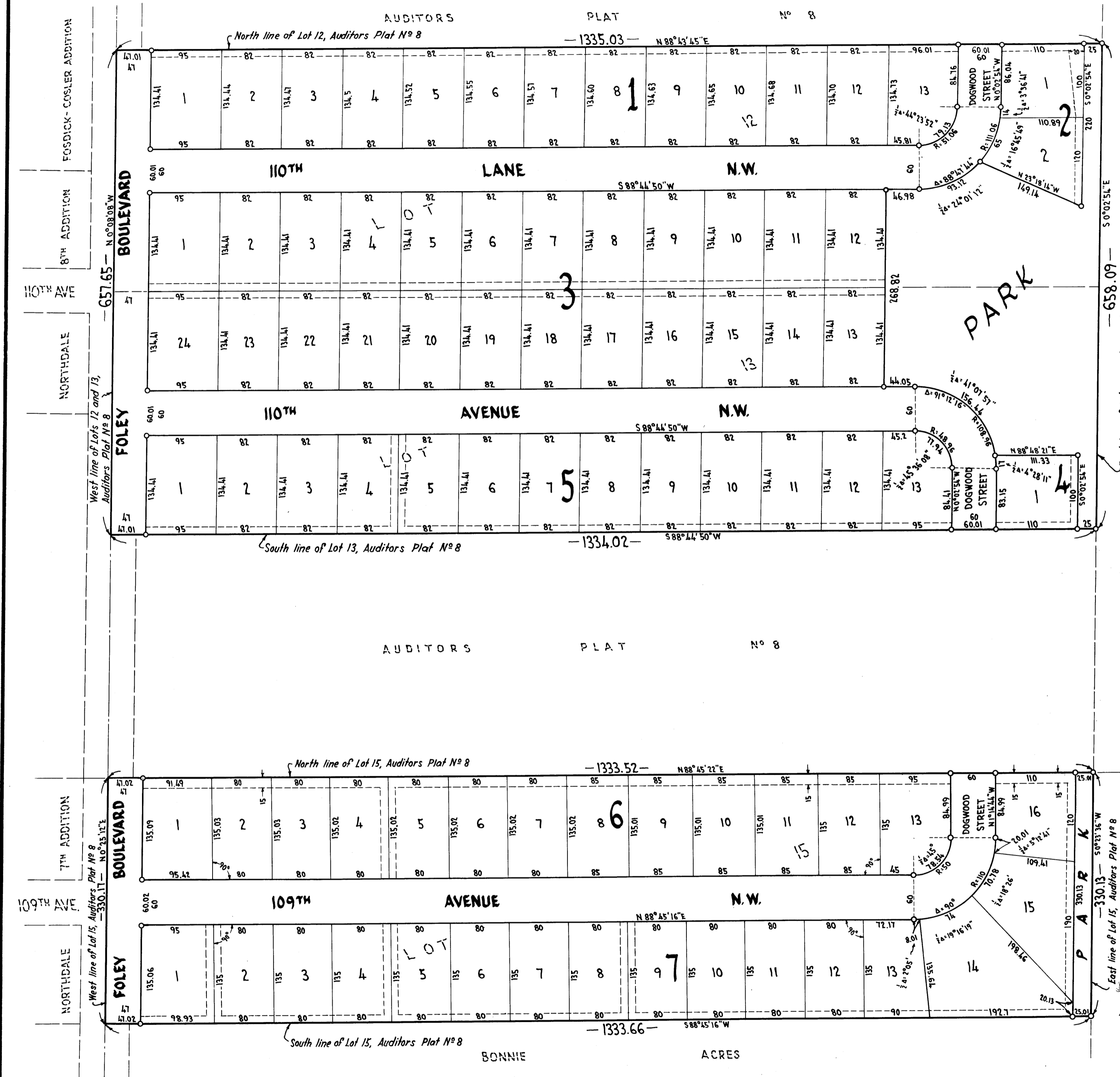


# THOMPSON PARK

CITY OF COON RAPIDS, COUNTY OF ANOKA



Surveyed and Drawn by:  
MINDER ENGINEERING CO., INC.  
Engineers and Surveyors

NOVEMBER 1960

236469  
OFFICE OF REGISTER OF DEEDS  
STATE OF MINNESOTA, COUNTY OF ANOKA } ss  
I hereby certify that the within instrument was filed in this office for record on the day of July 14 1962 at 12 o'clock P.M. and was duly recorded in book No. of Plate page 13  
Christine Schuman  
Register of Deeds  
By Margaret Russell  
Deputy

Office of REGISTRAR OF TITLES  
STATE OF MINNESOTA  
COUNTY OF ANOKA  
I hereby certify that the within instrument was filed in this office on the day of July 14 1962 at 12 o'clock P.M.  
Christine Schuman  
Register of Titles  
By Ellen Bottcher  
DEPUTY REGISTRAR OF TITLES

KNOW ALL MEN BY THESE PRESENTS: That Land Holding Company, a co-partnership comprised of O.B. Thompson also known as Olin B. Thompson, and Dennis O. Thompson, owners and proprietors of the following described property situate in the State of Minnesota and County of Anoka to-wit: Lots 12 and 13, Auditor's Plat No. 8, and Orrin E. Thompson Construction Corporation owner and proprietor of Lot 15, said Auditor's Plat No. 8; have caused the same to be surveyed and platted as THOMPSON PARK and do hereby donate and dedicate to the public for the public use forever the Avenues, Boulevard, Lane, Streets and Parks as shown on the annexed plat, also subject to drainage and utility easements as shown on the annexed plat. In witness whereof said Land Holding Company has caused these presents to be signed by Olin B. Thompson and Dennis O. Thompson, partners in said co-partnership, this 3<sup>rd</sup> day of July A.D. 1962. Also in witness whereof said Orrin E. Thompson Construction Corporation has caused these presents to be signed by its proper officers and its corporate seal to be hereunto affixed this 3<sup>rd</sup> day of July A.D. 1962.

In Presence of

|                             |   |  |
|-----------------------------|---|--|
| <u>Stafford P. Erickson</u> | } as to O.B. Thompson and Dennis O. Thompson    | LAND HOLDING COMPANY                       |
| <u>Donald J. Pedersen</u>   |   | O. B. THOMPSON                             |
| <u>Stafford P. Erickson</u> | } as to Orrin E. Thompson and Idore S. Pedersen | Orrin E. Thompson Construction Corporation |
| <u>Donald J. Pedersen</u>   |   | Orrin E. Thompson - PRESIDENT              |
|                             |   | Idore S. Pedersen - SECRETARY              |

State of Minnesota  
County of Hennepin On this 3<sup>rd</sup> day of July A.D. 1962, before me a Notary Public, within and for said County and State, personally appeared Olin B. Thompson and Dennis O. Thompson, who being each by me duly sworn, did say that they are co-partners of Land Holding Company, the co-partnership named in the foregoing instrument; that said instrument was signed in behalf of said co-partnership; and that said Olin B. Thompson and Dennis O. Thompson acknowledged said instrument to be the free act and deed of said co-partnership.

State of Minnesota  
County of Hennepin On this 3<sup>rd</sup> day of July A.D. 1962, before me a Notary Public, within and for said County and State personally appeared Orrin E. Thompson and Idore S. Pedersen, who being each by me duly sworn did say that they are respectively President and Secretary of Orrin E. Thompson Construction Corporation, the corporation named in the foregoing instrument, that the corporate seal affixed to said instrument is the corporate seal of said corporation, and that said instrument was signed and sealed in behalf of said corporation by authority of its Board of Directors and said Orrin E. Thompson and Idore S. Pedersen acknowledged said instrument to be the free act and deed of said corporation.

I hereby certify that I have surveyed and platted the property described on this plat as THOMPSON PARK; that this plat is a correct representation of said survey; that all distances are correctly shown on the plat in feet and decimals of a foot; that the monuments for guidance of future surveys have been correctly placed in the ground as shown on the plat; that the outside boundary lines are correctly designated on said plat and that there are no wetlands or public highways to be designated on said plat other than as shown thereon.

State of Minnesota  
County of Hennepin Above certificate subscribed and sworn to before me a Notary Public, within and for said County and State this 22 day of November A.D. 1960.

TAXES PAID  
This 12<sup>th</sup> day of July 1962  
Kenneth J. Campbell  
Auditor, Anoka County, Minn.  
Deputy

I HEREBY CERTIFY THAT TAXES FOR THE YEAR 1961 ON THE LANDS DESCRIBED WITHIN ARE PAID  
Donald J. Pedersen  
County Treasurer

The annexed plat of THOMPSON PARK was approved by the Planning and Zoning Commission of the City of Coon Rapids at a regular meeting thereof held this 22<sup>nd</sup> day of Nov A.D. 1960.  
CITY OF COON RAPIDS, ANOKA COUNTY, MINNESOTA  
by Frank E. Kern Its Chairman  
by Donald J. Frank Its Clerk

We hereby certify that the City Council of the City of Coon Rapids, Anoka County, Minnesota, duly accepted and approved the annexed plat of THOMPSON PARK, at a regular meeting thereof held this 21<sup>st</sup> day of February A.D. 1962.  
CITY OF COON RAPIDS, ANOKA COUNTY, MINNESOTA  
by Joseph A. Craig Its Mayor  
by Dave Tullit Its Clerk

Checked and approved this 12<sup>th</sup> day of July A.D. 1962.  
Reuben W. Anderson  
Anoka County Surveyor