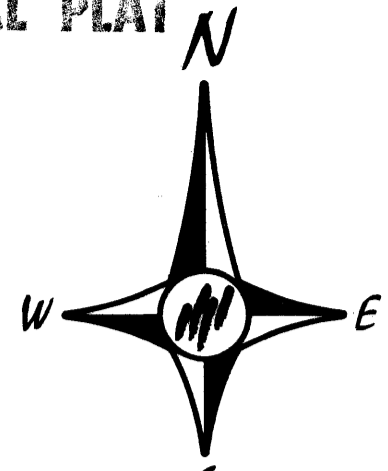


OFFICIAL PLAT



SCALE IN FEET
1 INCH = 100 FEET

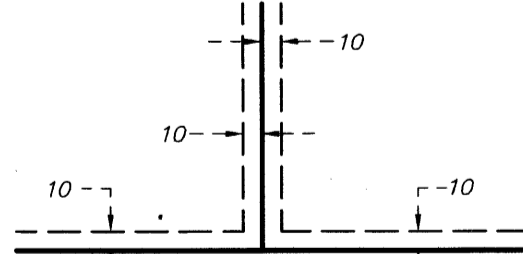
FOR THE PURPOSES OF THIS PLAT, THE NORTH LINE OF THE NORTHEAST QUARTER OF THE NORTHEAST QUARTER OF SECTION 26, TOWNSHIP 33, RANGE 24 IS ASSUMED TO HAVE A BEARING OF NORTH 89 DEGREES 51 MINUTES 15 SECONDS EAST.

ALL MONUMENTS REQUIRED BY MINNESOTA STATUTE AND NOT SHOWN ON THIS PLAT, WILL BE SET WITHIN ONE YEAR OF THE RECORDING DATE OF THIS PLAT AND SHALL BE EVIDENCED BY A 1/2 INCH BY 14 INCH IRON PIPE MARKED BY R.L.S. No. 25287

WEST LINE OF THE NE 1/4 OF THE NE 1/4, SEC. 26, T. 33, R. 24

I HEREBY CERTIFY THAT THE COPIES AND DISCOUNT TARIFFS ON THE LANDS DESCRIBED WITHIN ARE PAID AND THE TRANSFER IS ENTERED
DATE: Feb 4 2005
MAUREEN J. DEWINE
PROPERTY TAX ADMINISTRATOR
DEPUTY PROPERTY TAX ADMINISTRATOR

DRAINAGE AND UTILITY EASEMENTS ARE SHOWN THUS:



BEING 10 FEET IN WIDTH AND ADJOINING ALL LOT AND RIGHT OF WAY LINES UNLESS OTHERWISE SHOWN ON THE PLAT.

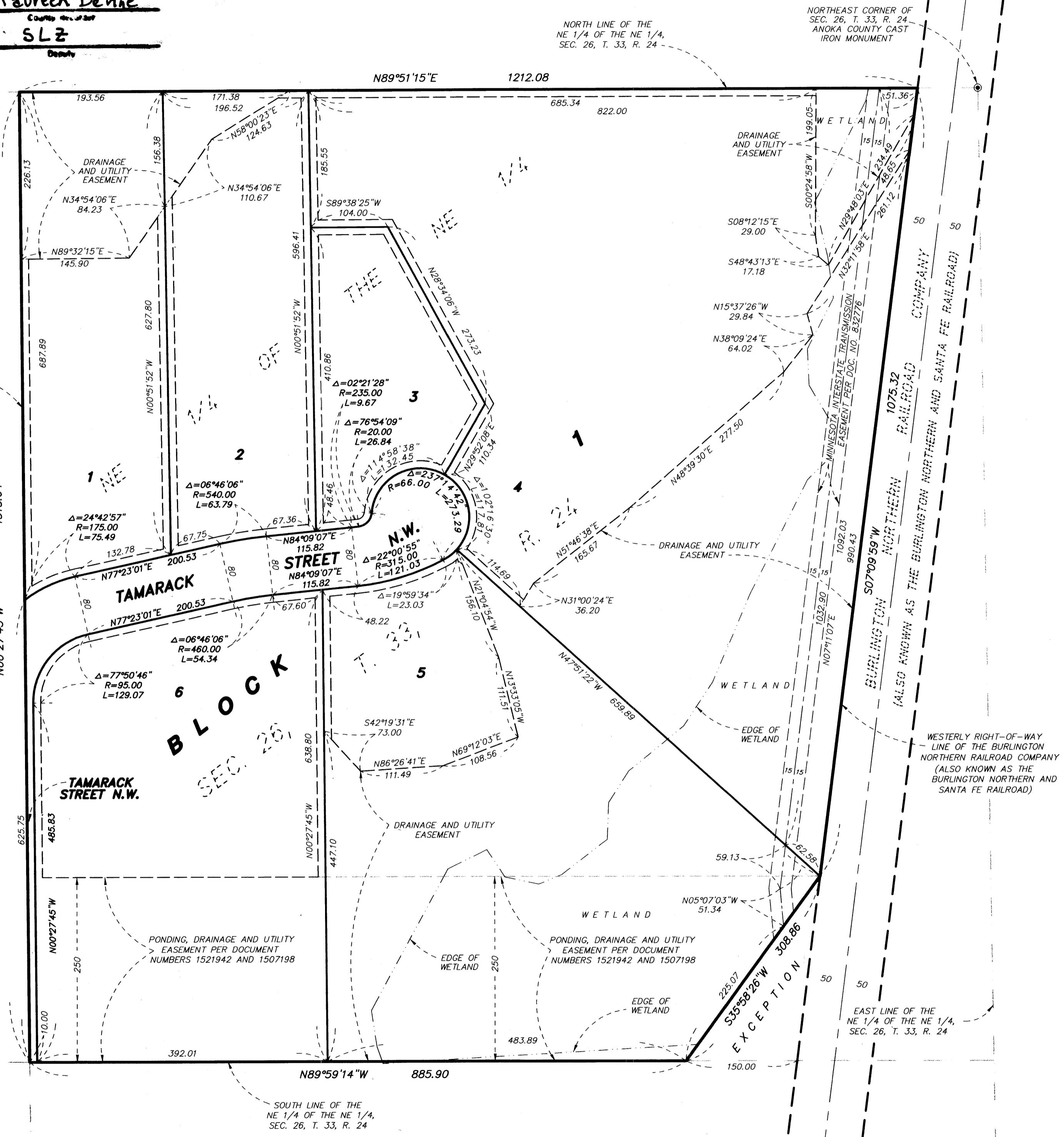
1972746.002

OFFICE OF COUNTY RECORDER
STATE OF MINNESOTA, COUNTY OF ANOKA
I hereby certify that the within instrument was filed in the office to record on the 4th Feb. AD. 2005
3:40 o'clock P.M. and was duly returned in book 69 page 8
Maureen Dewine
County Recorder
By SLZ
Deputy

THREE STAR INDUSTRIAL PARK

Bk. 69 of Abstract page 8

CITY OF OAK GROVE
COUNTY OF ANOKA
SEC. 26, T. 33, R. 24



KNOW ALL PERSONS BY THESE PRESENTS: That Carl W. Hanson and Suzanne M. Hanson, husband and wife, owners and Village Bank, a Minnesota corporation, mortgagee of the following described property situated in the County of Anoka, State of Minnesota, to wit:

That part of the Northeast Quarter of the Northeast Quarter of Section 26, Township 33, Range 24, Anoka County, Minnesota lying Westerly of the Westerly right-of-way line of the Burlington Northern and Santa Fe Railroad, EXCEPT that part thereof lying Southeasterly of the following described line: Beginning at a point on the South line of said Northeast Quarter of the Northeast Quarter, distant 150.00 feet Westerly of the intersection of said South line with the Westerly right-of-way line of the Burlington Northern and Santa Fe Railroad; thence Northeasterly to the intersection of said Westerly right-of-way line with the North line of the South 250.00 feet of said Northeast Quarter of the Northeast Quarter, and there terminating.

Have caused the same to be surveyed, platted and known as THREE STAR INDUSTRIAL PARK and do hereby donate and dedicate to the public for public use forever the street and dedicate the drainage and utility easements as shown on the plat.

In witness whereof said Carl W. Hanson and Suzanne M. Hanson, husband and wife, have hereunto set their hands this 3rd day of February 2005
By Carl W. Hanson By Suzanne M. Hanson

State of Minnesota
County of Anoka
The foregoing instrument was acknowledged before me this 3rd day of February 2005 by Carl W. Hanson and Suzanne M. Hanson, husband and wife.

Notary Public, Anoka County, Minnesota
My commission expires 1-31-10
ARTHUR A. LUCAST
NOTARY PUBLIC - MINNESOTA
My Comm. Exp. Jan. 31, 2010

In witness whereof said Village Bank, a Minnesota corporation, has caused these presents to be signed by its proper officer this 9th day of February 2005.
By [Signature] its Senior Vice President

State of Minnesota
County of Anoka
The foregoing instrument was acknowledged before me this 9th day of February 2005 by Patrick Cullen, Sr. Vice Pres of Village Bank, a Minnesota corporation, on behalf of the corporation.

Notary Public, Anoka County, Minnesota
My commission expires 7-31-10
ARTHUR A. LUCAST
NOTARY PUBLIC - MINNESOTA
My Comm. Exp. Jan. 31, 2010

I, Mark F. Maistrovich, hereby certify that I have surveyed and platted the property described on this plat as THREE STAR INDUSTRIAL PARK; that this plat is a correct representation of the survey; that all distances are correctly shown on the plat in feet and hundredths of a foot; that all monuments have been correctly placed in the ground as shown or will be correctly placed in the ground as designated; that the outside boundary lines are correctly designated on the plat; and that there are no wet lands as defined in MS 505.02, Subd. 1, or public highways to be designated other than as shown.

Mark F. Maistrovich, Land Surveyor
Minnesota License Number 25287
State of Minnesota
County of Anoka

The foregoing Surveyors Certificate was acknowledged before me this 31st day of January 2005 by Mark F. Maistrovich, Land Surveyor, Minnesota License No. 25287

Notary Public, Anoka County, Minnesota
My commission expires 1/31/2005
LINDA BENE FIDELIAN
NOTARY PUBLIC - MINNESOTA
My Commission Expires Jan. 31, 2005

OAK GROVE, MINNESOTA
This plat of THREE STAR INDUSTRIAL PARK was approved and accepted by the City Council of the City of Oak Grove, Minnesota, at a regular meeting thereof held this 27th day of September 2004. If applicable, the written comments and recommendations of the Commissioner of Transportation and County Highway Engineer have been received by the City or the prescribed 30 day period has elapsed without receipt of such comments and recommendations as provided by Minnesota Statutes, Section 505.03, Subdivision 2.

CITY COUNCIL OF THE CITY OF OAK GROVE, MINNESOTA
Mayor [Signature] City Administrator [Signature]

ANOKA COUNTY SURVEYOR
This plat was checked and approved on this 7th day of FEBRUARY 2005
By Larry D. Holm, Anoka County Surveyor

Pass Engineering Inc.
Registered Professional Engineers
Licensed Land Surveyors

1511015 \$275.00