

THURNBECK PRESERVE SECOND ADDITION

City of Columbus
County of Anoka
Sec. 10, T32, R22

KNOW ALL PERSONS BY THESE PRESENTS: That Buy Back, Inc., a Minnesota corporation, owner and Premier Bank, a Minnesota corporation, mortgagee, of the following described property:

The North Half of the Northeast Quarter of Section 10, Township 32, Range 22, Anoka County, Minnesota. Except that part platted as THURNBECK PRESERVE, described as follows:
Beginning at the northeast corner of said Northeast Quarter of Section 10; thence on an assumed bearing of South 00 degrees 38 minutes 12 seconds East, along the east line of said Northeast Quarter a distance of 266.50 feet; thence South 85 degrees 21 minutes 32 seconds West a distance of 333.81 feet; thence South 70 degrees 54 minutes 17 seconds West a distance of 729.07 feet; thence South 88 degrees 25 minutes 58 seconds West a distance of 282.40 feet; thence North 51 degrees 47 minutes 14 seconds West a distance of 719.98 feet; thence North 85 degrees 17 minutes 00 seconds West a distance of 562.90 feet; thence South 59 degrees 12 minutes 00 seconds West a distance of 200.57 feet to the west line of said Northeast Quarter; thence North 00 degrees 34 minutes 16 seconds West along said west line a distance of 183.50 feet to the northwest corner of said Northeast Quarter; thence South 89 degrees 43 minutes 11 seconds East, along the north line of said Northeast Quarter a distance of 2601.64 feet along said north line to the point of beginning.

and
The Southwest Quarter of the Northeast Quarter of Section 10, Township 32, Range 22, Anoka County, Minnesota

and
The Southeast Quarter of the Northeast Quarter of Section 10, Township 32, Range 22, Anoka County, Minnesota, excepting therefrom that part described as follows:

Beginning at the East Quarter Corner of said Section 10; thence on an assumed bearing of North 89 degrees 41 minutes 26 seconds West along the south line of the Northeast Quarter of said Section 10, a distance of 494.86 feet; thence North 60 degrees 43 minutes 37 seconds West a distance of 383.61 feet; thence North 37 degrees 53 minutes 49 seconds East, a distance of 188.15 feet to a line parallel with and distant 334.86 feet north of the south line of the Northeast Quarter of said Section 10; thence South 89 degrees 41 minutes 26 seconds East, along said parallel line, a distance of 710.20 feet to the east line of the Northeast Quarter of said Section 10; thence South 00 degrees 38 minutes 12 seconds East, along said east line, a distance of 334.91 feet to the point of beginning.

Have caused the same to be surveyed and platted as THURNBECK PRESERVE SECOND ADDITION and do hereby dedicate to the public for public use the public ways and the drainage and utility easements as shown on this plat.

In witness whereof said Buy Back, Inc., a Minnesota corporation, has caused these presents to be signed by its proper officer this 10th day of October, 2019.

Buy Back, Inc.
Thomas A. Carlisle
Thomas A. Carlisle, Vice President

STATE OF Minnesota
COUNTY OF Anoka

This instrument was acknowledged before me this 10th day of October, 2019, by Thomas A. Carlisle, Vice President of Buy Back, Inc., a Minnesota corporation, on behalf of the corporation.

Catherine Ann Carlisle
Catherine Ann Carlisle (Signature)
Catherine Ann Carlisle (Print Name)
Notary Public, Anoka County, Minnesota
My Commission Expires Jan 31, 2020

In witness whereof said Premier Bank, a Minnesota corporation, has caused these presents to be signed by its proper officer this 10th day of October, 2019.

PREMIER BANK
Joseph B. Houle
Joseph B. Houle, Branch President

STATE OF Minnesota
COUNTY OF Anoka

This instrument was acknowledged before me this 10th day of October, 2019, by Joseph B. Houle, Branch President of Premier Bank, a Minnesota corporation, on behalf of the corporation.

Catherine Ann Carlisle
Catherine Ann Carlisle (Signature)
Catherine Ann Carlisle (Print Name)
Notary Public, Anoka County, Minnesota
My Commission Expires Jan 31, 2020

I Jason E. Rud do hereby certify that this plat was prepared by me or under my direct supervision; that I am a duly Licensed Land Surveyor in the State of Minnesota; that this plat is a correct representation of the boundary survey; that all mathematical data and labels are correctly designated on this plat; that all monuments depicted on this plat have been, or will be correctly set within one year; that all water boundaries and wet lands, as defined in Minnesota Statutes, Section 505.01, Subd. 3, as of the date of this certificate are shown and labeled on this plat; and all public ways are shown and labeled on this plat.

Dated this 4th day of OCTOBER, 2019

Jason E. Rud
Jason E. Rud, Licensed Land Surveyor
Minnesota License No. 41578

STATE OF MINNESOTA
COUNTY OF Anoka

This instrument was acknowledged before me this 4th day of October, 2019, by Jason E. Rud.

LaVae Mack
LaVae Mack (Signature)
LaVae Mack (Print Name)
Notary Public, Anoka County, Minnesota
My Commission Expires 01/31/2022

CITY COUNCIL, CITY OF COLUMBUS, MINNESOTA

This plat of THURNBECK PRESERVE SECOND ADDITION was approved and accepted by the City Council of the City of Columbus, Minnesota at a regular meeting thereof held this 11th day of September, 2019, and said plat is in compliance with the provisions of Minnesota Statutes, Section 505.03, Subd. 2.

CITY COUNCIL, CITY OF COLUMBUS, MINNESOTA
By *John H. ...* Mayor
By *Erin ...* Clerk

COUNTY SURVEYOR

I hereby certify that in accordance with Minnesota Statutes, Section 505.021, Subd. 11, this plat has been reviewed and approved this 1st day of November, 2019.

Charles F. Gitzen
Charles F. Gitzen
Anoka County Surveyor

COUNTY AUDITOR/TREASURER

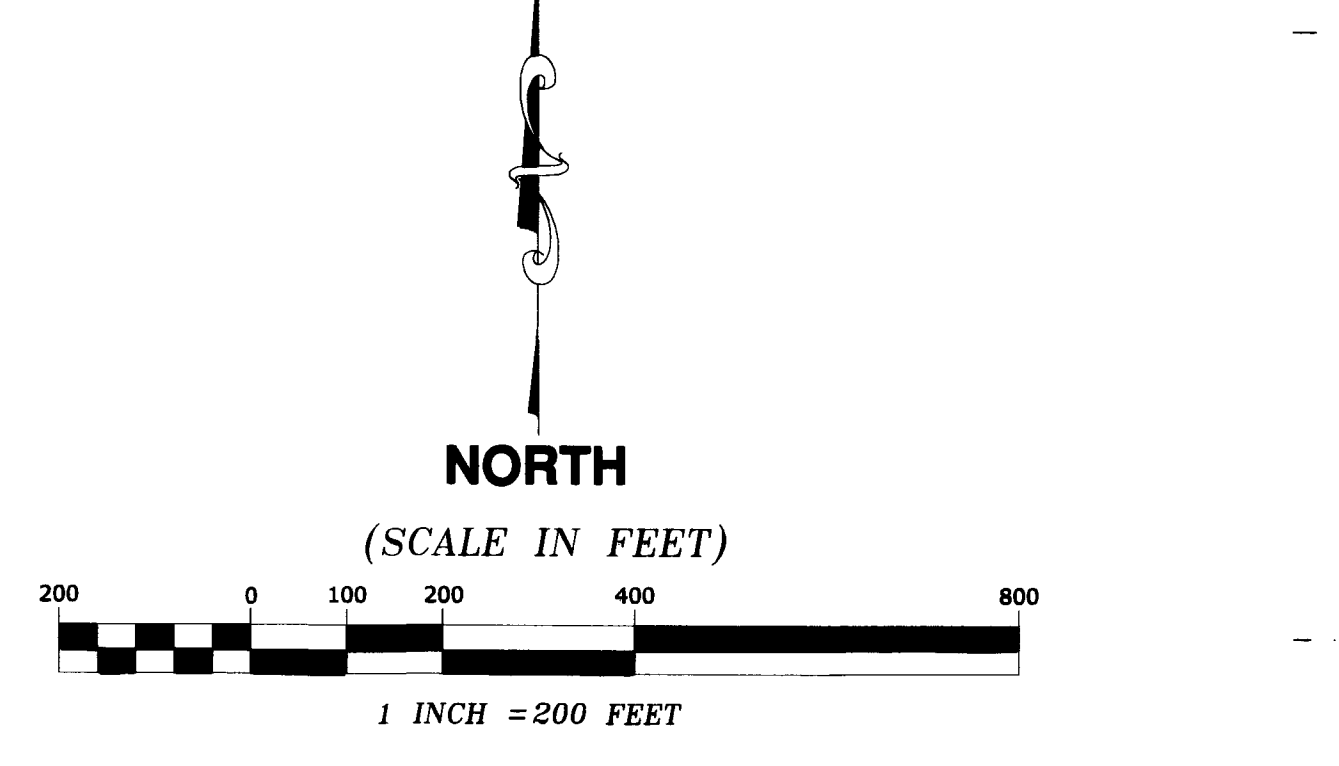
Pursuant to Minnesota Statutes, Section 505.021, Subd. 9, taxes payable in the year 2019 on the land hereinbefore described have been paid. Also, pursuant to Minnesota Statutes, Section 272.12, there are no delinquent taxes and transfer entered this 1st day of November, 2019.

Jonell M Sawyer
Jonell M Sawyer
Property Tax Administrator
By *...* Deputy

COUNTY RECORDER/REGISTRAR OF TITLES
COUNTY OF ANOKA, STATE OF MINNESOTA

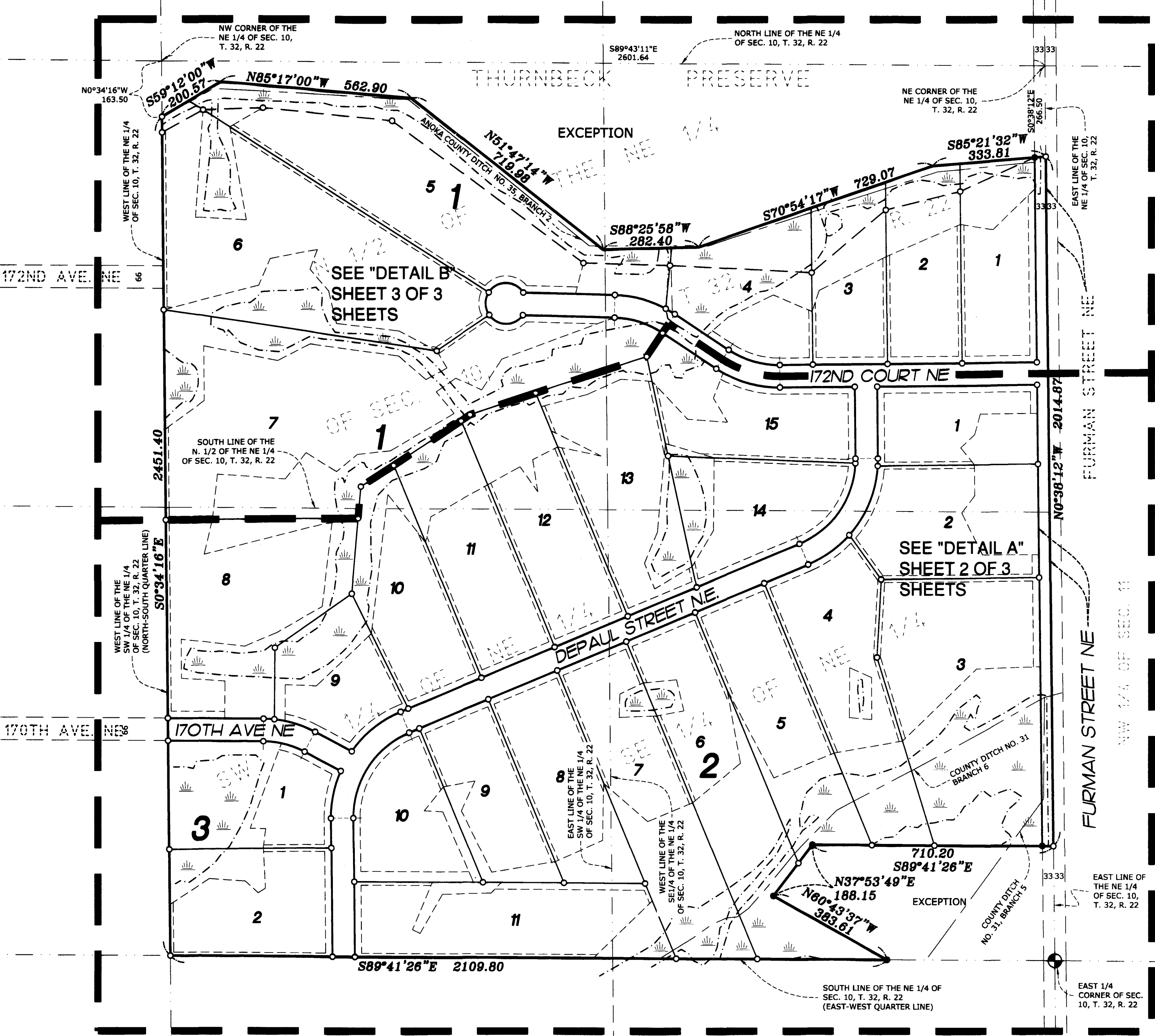
I hereby certify that this plat of THURNBECK PRESERVE SECOND ADDITION was filed in the office of the County Recorder/Registrar of Titles for public record on this 1st day of November, 2019, at 12:41 o'clock P.M. and was duly recorded as Document Number 2243716.002.

Jonell M Sawyer
Jonell M Sawyer
County Recorder/Registrar of Titles
By *...* Deputy



- DENOTES IRON MONUMENT FOUND AS LABELED
- DENOTES 1/2 INCH BY 14 INCH IRON PIPE SET, MARKED RLS NO. 41578
- ⊕ DENOTES ANOKA COUNTY CAST IRON MONUMENT
- ▨ DENOTES WETLAND DELINEATED BY JACOBSON ENVIRONMENTAL IN SEPTEMBER 2017.

For the purposes of this plat, the East line of the Northeast Quarter of Section 10, Township 32, Range 22, Anoka County, Minnesota is assumed to have a bearing of South 0 degrees 38 minutes 12 seconds East.



E. G. RUD & SONS, INC.
Professional Land Surveyors
EST. 1877
866

THURNBECK PRESERVE SECOND ADDITION

"DETAIL A"

City of Columbus
County of Anoka
Sec. 10, T32, R22

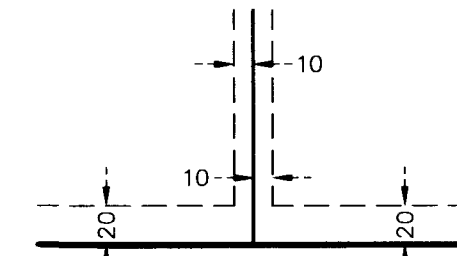
LEGEND

- DENOTES IRON MONUMENT FOUND AS LABELED
- DENOTES 1/2 INCH BY 14 INCH IRON PIPE SET, MARKED RLS NO. 41578
- ⊕ DENOTES ANOKA COUNTY CAST IRON MONUMENT
- ▨ DENOTES WETLAND DELINEATED BY JACOBSON ENVIRONMENTAL IN SEPTEMBER 2017.

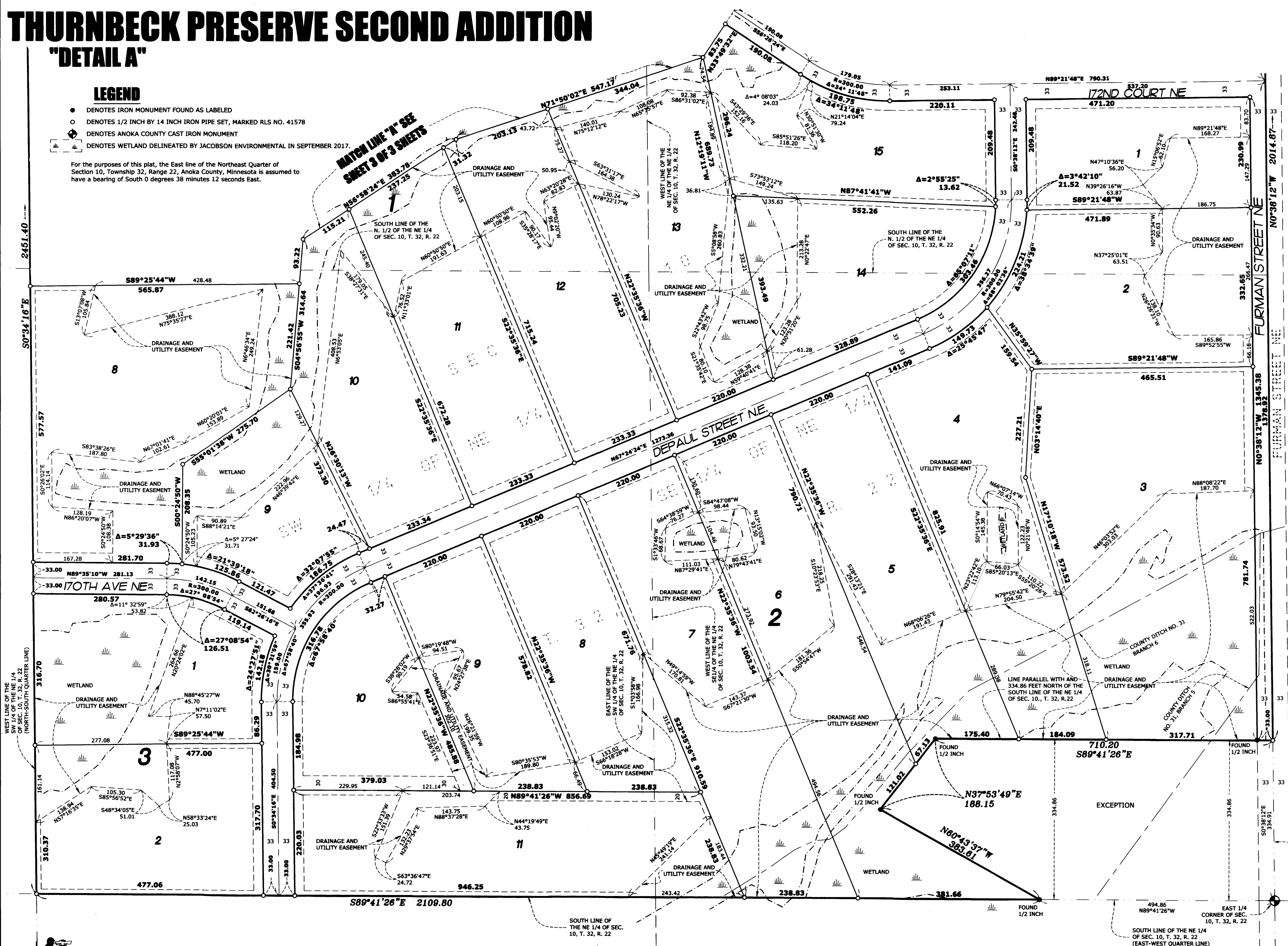
For the purposes of this plat, the East line of the Northeast Quarter of Section 10, Township 32, Range 22, Anoka County, Minnesota is assumed to have a bearing of South 0 degrees 38 minutes 12 seconds East.

MATCH LINE "A" SEE SHEET 3 OF 3 SHEETS

DRAINAGE AND UTILITY EASEMENTS ARE SHOWN THIS:



BEING 20 FEET IN WIDTH ADJOINING RIGHT OF WAY LINES AND 10 FEET IN WIDTH ADJOINING LOT LINES UNLESS OTHERWISE SHOWN.



NORTH

(SCALE IN FEET)



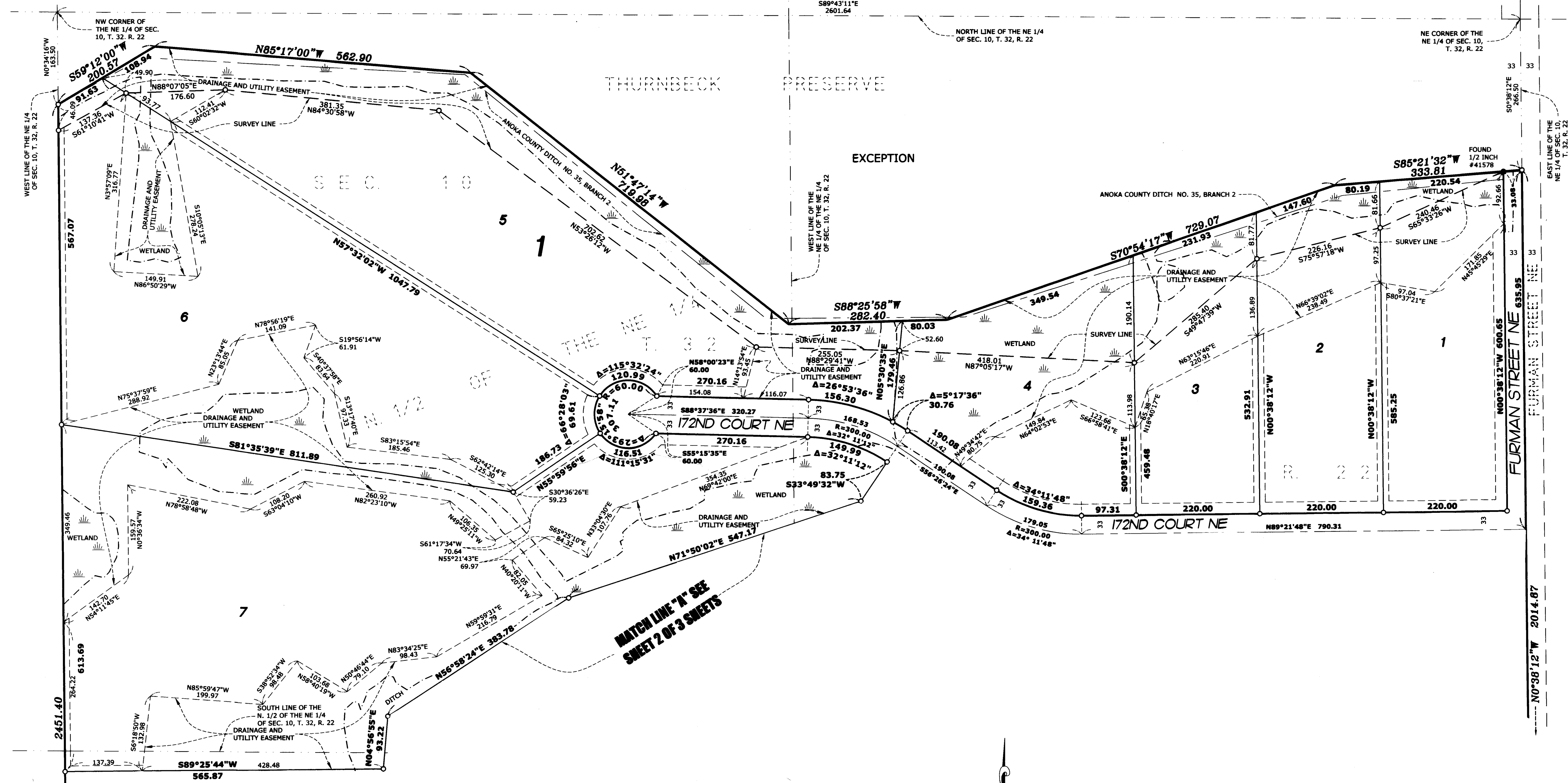
1 INCH = 100 FEET

E. G. RUD & SONS, INC.
EST. 1977 Professional Land Surveyors

"DETAIL B"

THURNBECK PRESERVE SECOND ADDITION

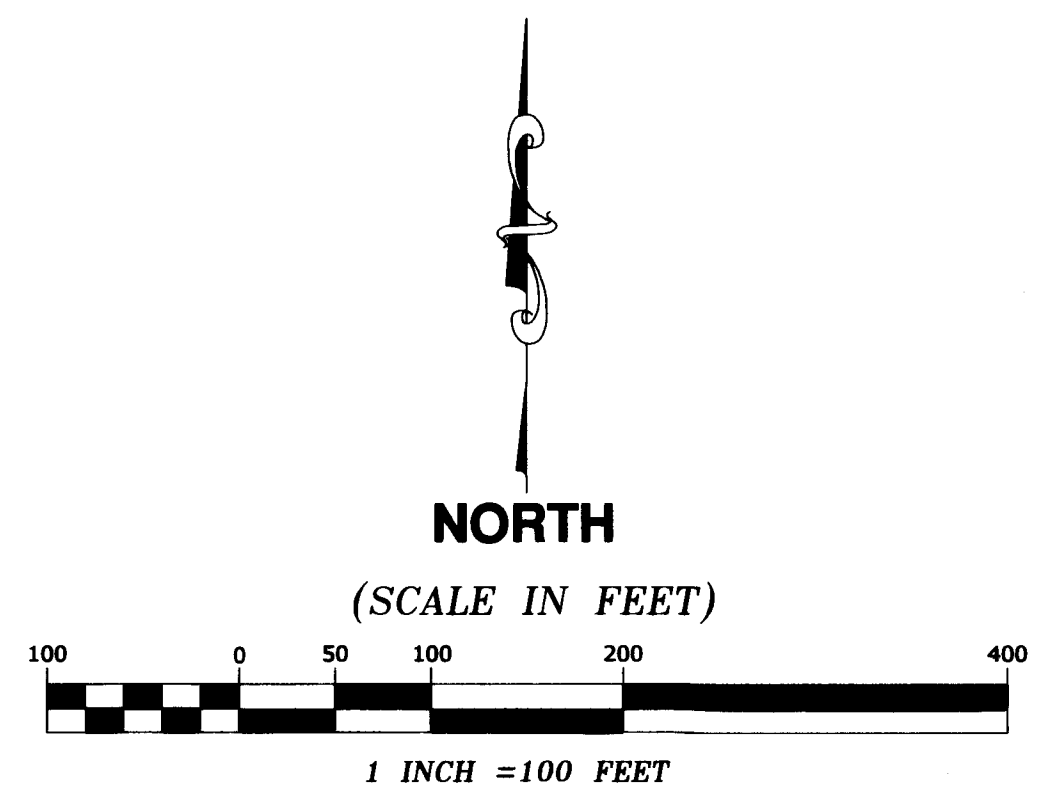
City of Columbus
County of Anoka
Sec. 10, T32, R22



LEGEND

- DENOTES IRON MONUMENT FOUND AS LABELED
- DENOTES 1/2 INCH BY 14 INCH IRON PIPE SET, MARKED RLS NO. 41578
- ▨ DENOTES WETLAND DELINEATED BY JACOBSON ENVIRONMENTAL IN SEPTEMBER 2017.

For the purposes of this plat, the East line of the Northeast Quarter of Section 10, Township 32, Range 22, Anoka County, Minnesota is assumed to have a bearing of South 0 degrees 38 minutes 12 seconds East.



DRAINAGE AND UTILITY EASEMENTS ARE SHOWN THIS:

